

# Specification



## ZE1900V-300

ZERES 5 Series: Electric with Integrated Hydraulics



Clamping Unit		ZE1900 V
Clamping Force	kN	1900
	US Tons	214
Mold Opening Stroke	mm	470
	in.	18.5
Minimum Mold Height	mm	200
	in.	7.87
Maximum Mold Height	mm	550
	in.	21.65
Maximum Daylight	mm	1020
	in.	40.16
Distance Between Tie-Bars (HXV)	mm	570x570
	in.	22.44x22.44
Platen Dimensions (HXV)	mm	800x800
	in.	31.5x31.5
Minimum Mold Size	mm	370x370
	in.	14.57x14.57
Ejector Stroke	mm	130
	in.	5.12
Ejector Force	kN	55
	US Tons	6

# Specification



## ZE1900V-300

ZERES 5 Series: Electric with Integrated Hydraulics

Injection Unit		300			
Screw & Barrel Designation		AA	A	B	C
Screw Diameter	mm	30	32	36	40
	in.	1.18	1.26	1.42	1.57
Screw L/D Ratio	L/D	21	22.5	20	18
Injection Volume (Theoretical)	cm <sup>3</sup>	102	116	147	182
	cu.in.	6.22	7.08	8.97	11.11
Injection Weight (PS)	g	92	106	134	165
	oz.	3.25	3.74	4.73	5.82
Injection Pressure	MPa	280	253	200	162
	psi	40611	36695	29008	23496
Holding Pressure	MPa	224	202	160	130
	psi	32488	29298	23206	18855
Screw Speed	rpm	400	400	400	400
Plasticizing Rate (GPPS)	g/s	13.3	16.6	20.1	27.7
	oz./s	0.47	0.59	0.71	0.98
Nozzle Contact Force	kN	65	65	65	65
	US Tons	7	7	7	7

Injection Unit		300			
Injection Speed	mm/s	200			
	in./s	7.87			
Injection Rate (PS)	g/s	123	140	177	219
	oz./s	4.34	4.94	6.24	7.72

Injection Unit		300h			
Injection Speed	mm/s	300			
	in./s	11.81			
Injection Rate (PS)	g/s	185	210	266	329
	oz./s	6.53	7.41	9.38	11.61

Injection Unit		300hs			
Injection Speed	mm/s	500			
	in./s	19.69			
Injection Rate (PS)	g/s	308	351	444	548
	oz./s	10.86	12.38	15.66	19.33

# Specification



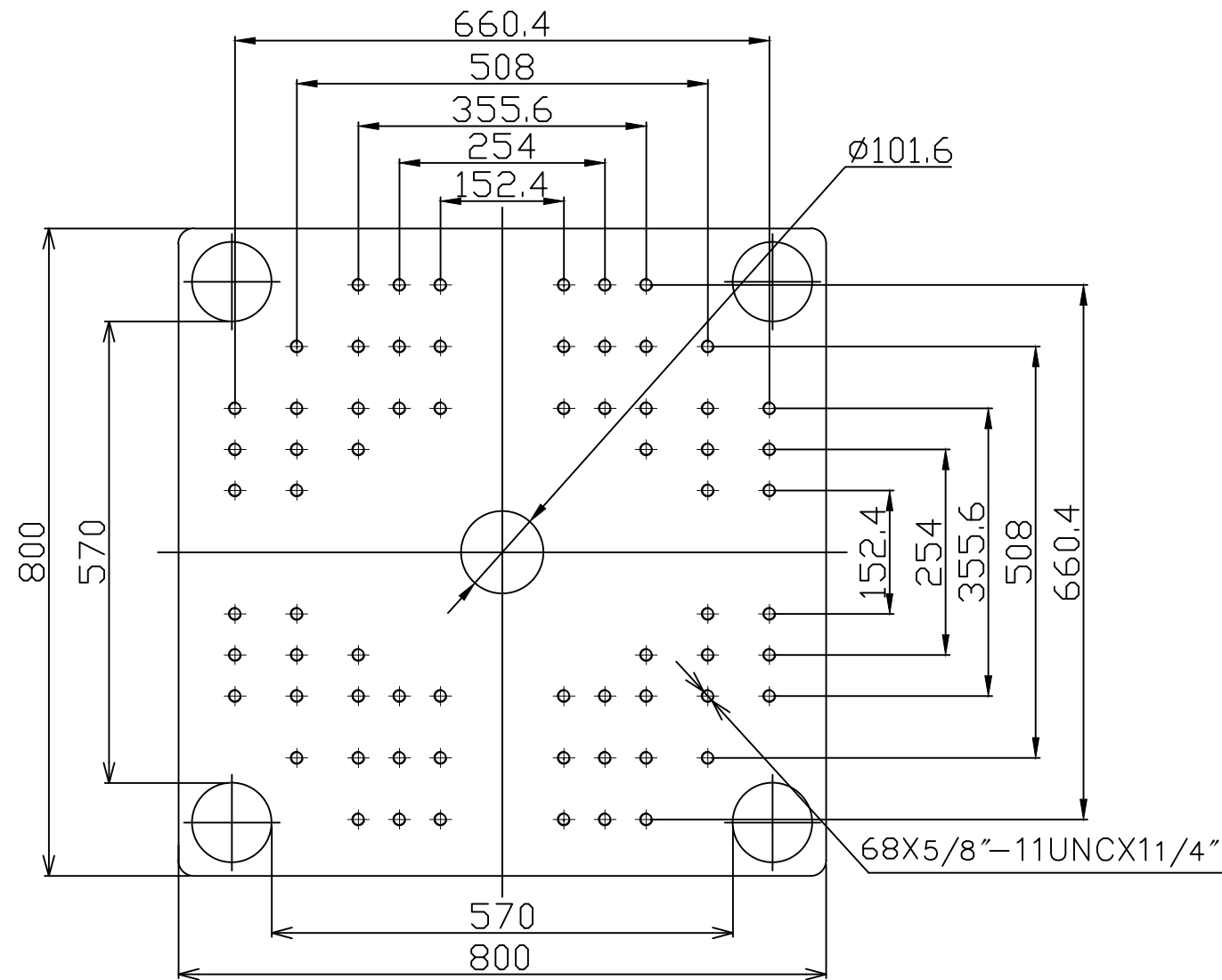
## ZE1900V-300

ZERES 5 Series: Electric with Integrated Hydraulics

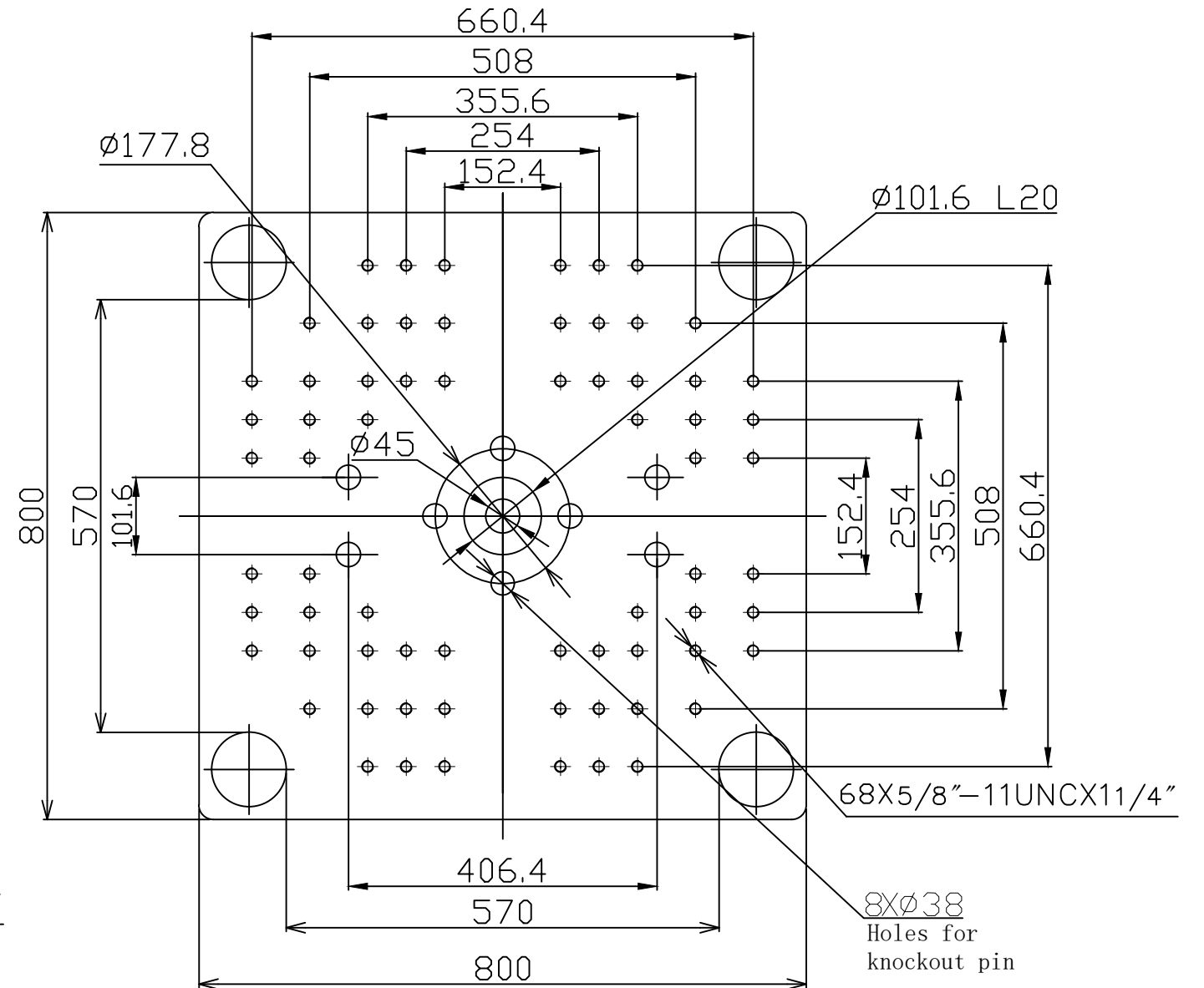
Other					
Connection Power	kW/A				300:20/34 300h:26/43 300hs:37/61
Heating Power	kW	10.3	11.9	11.9	11.9
Machine Dimension	m				5.90x1.52x2.29
	in.				232x60x90
Machine Weight	t				7.55
	lbs.				16645
Hopper Capacity	l				25
	gal				7
Oil Pressure	MPa				17.5
	psi				2538
Oil Flow	l/min				79
	gal/min				21
Oil Tank	l				107
	gal				28

**\*NOTE:**

1. Machine dimensions and weights are based on the international standard configuration and are for reference only. Any options or country specific requirements will affect this. Contact Absolute Haitian service department for machine specific information.
2. Power requirements are based on the international standard configuration and are for reference only. Any options or country specific requirements will affect this. Contact Absolute Haitian service department for machine specific information.



Fixed Platen



Moving Platen



Absolute Haitian Corporation  
33 Southgate St. Worcester, MA  
T: +1 508-792-4305  
www.absolutehaitian.com

Title: ZE/VEV 1900 Fixed & Moving Platens Drawing

Machine Model: ZE/VEV 1900  
Machine Serial Number:  
Machine Tonnage:

Sheet: 1 of 1

Drawn By: Harry Date: 1/9/2024  
Chkd By: LEON XIE Date: 1/9/2024

Revision	Date:	Drawing #:	NOT TO SCALE	Size: 11 X 17 "B"
Rev #: 1				Units: mm / [in]
Rev #: 2				Material:
Rev #: 3				Part:
Rev #: 4				Part:
Rev #: 5				Part:

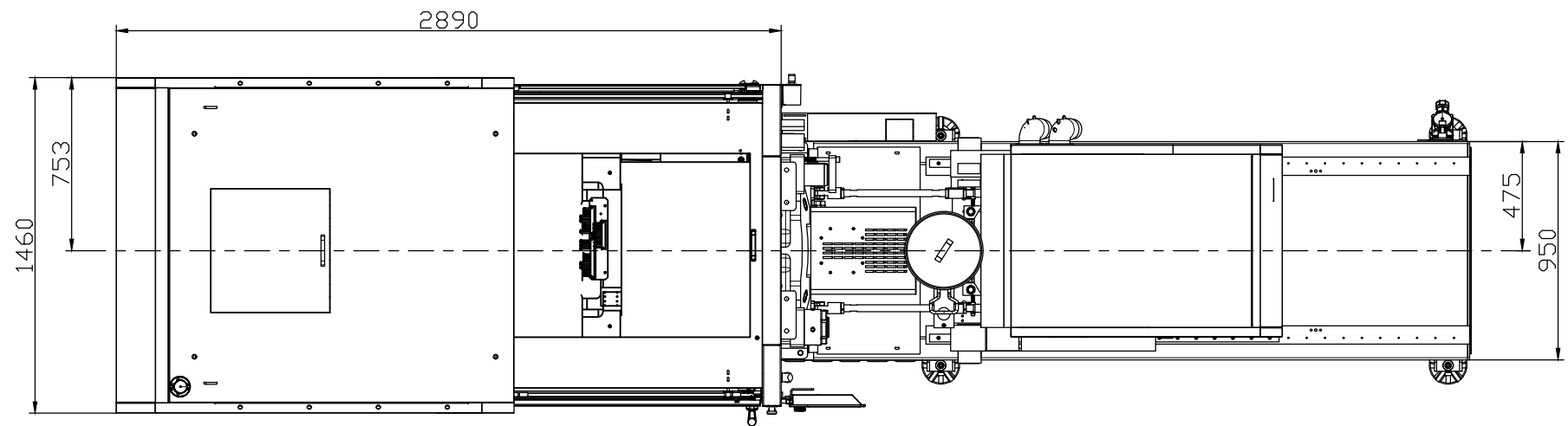
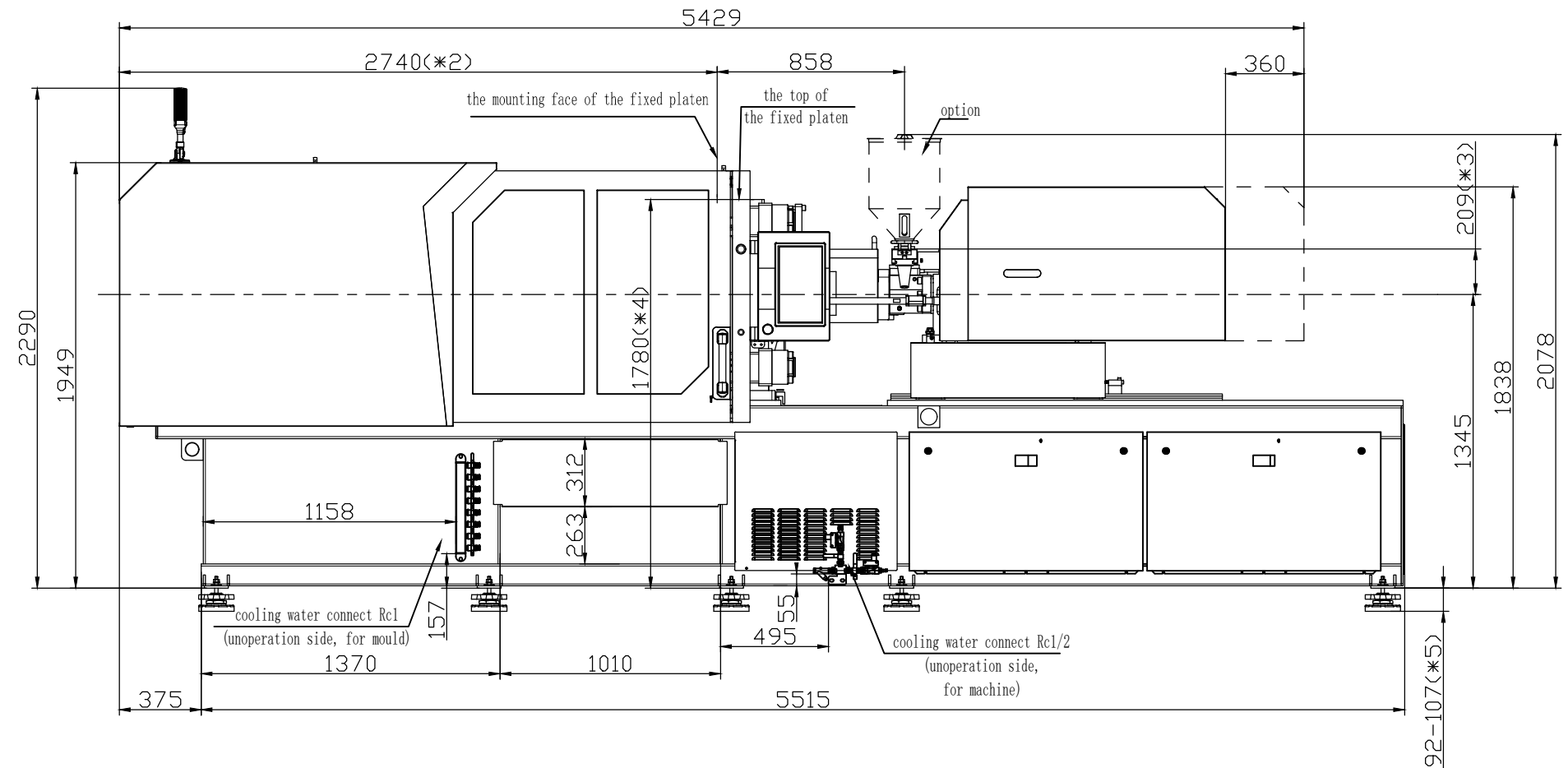
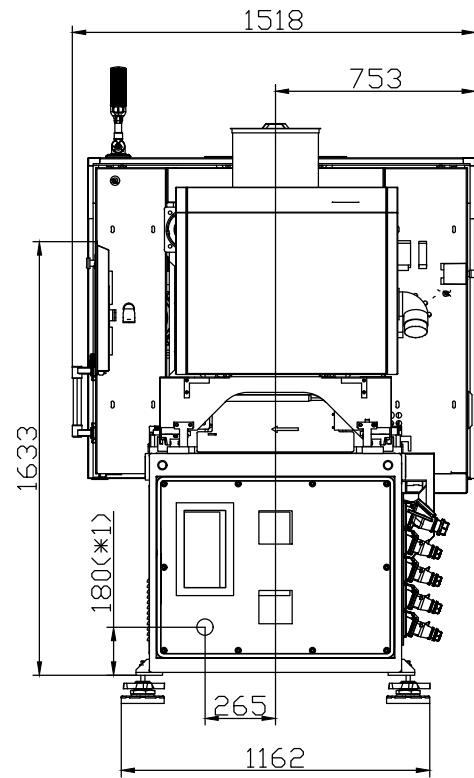
PLEASE READ:

The designs on this drawing were validated using machine manufacturer's drawings and/or information supplied by Absolute or the customer. It is the responsibility of the customer to review and confirm that all dimensions are consistent with the application intended and in accordance with the facility requirements for space, part clearance, overhead clearance, or any other interference. By signing this document, the customer accepts full responsibility for this design and application.

Customer:

Customer Approval:  
Authorized Signature

Notes:



- \*1 Power in  
Current and Power Cable are shown  
in the Main Power Supply Circuit
- \*2 To the mounting face of the  
fixed platen
- \*3 To the face of Hopper fixing platform
- \*4 To the top of the fixed platen
- \*5 Vibration dumping support



Absolute Haitian Corporation  
33 Southgate St. Worcester, MA  
T:+1 508-792-4305  
www.absolutehaitian.com

Title: ZE V 1900-300 Layout Drawing

Machine Model: ZE V 1900-300  
Machine Serial Number:  
Machine Tonnage:

Sheet: 1 of 1

Drawn By: Harry Date: 3/22/2024  
Chkd By: LEON XIE Date: 3/22/2024

Revision Date: Drawing #: Layout

Rev #:		
Rev #:		
Rev #:		
Rev #:		
Rev #:		

NOT TO SCALE Size: 11 X 17 "B"

Units: mm / [in]

Material:  
Part:  
Part:  
Part:  
Part:

PLEASE READ:

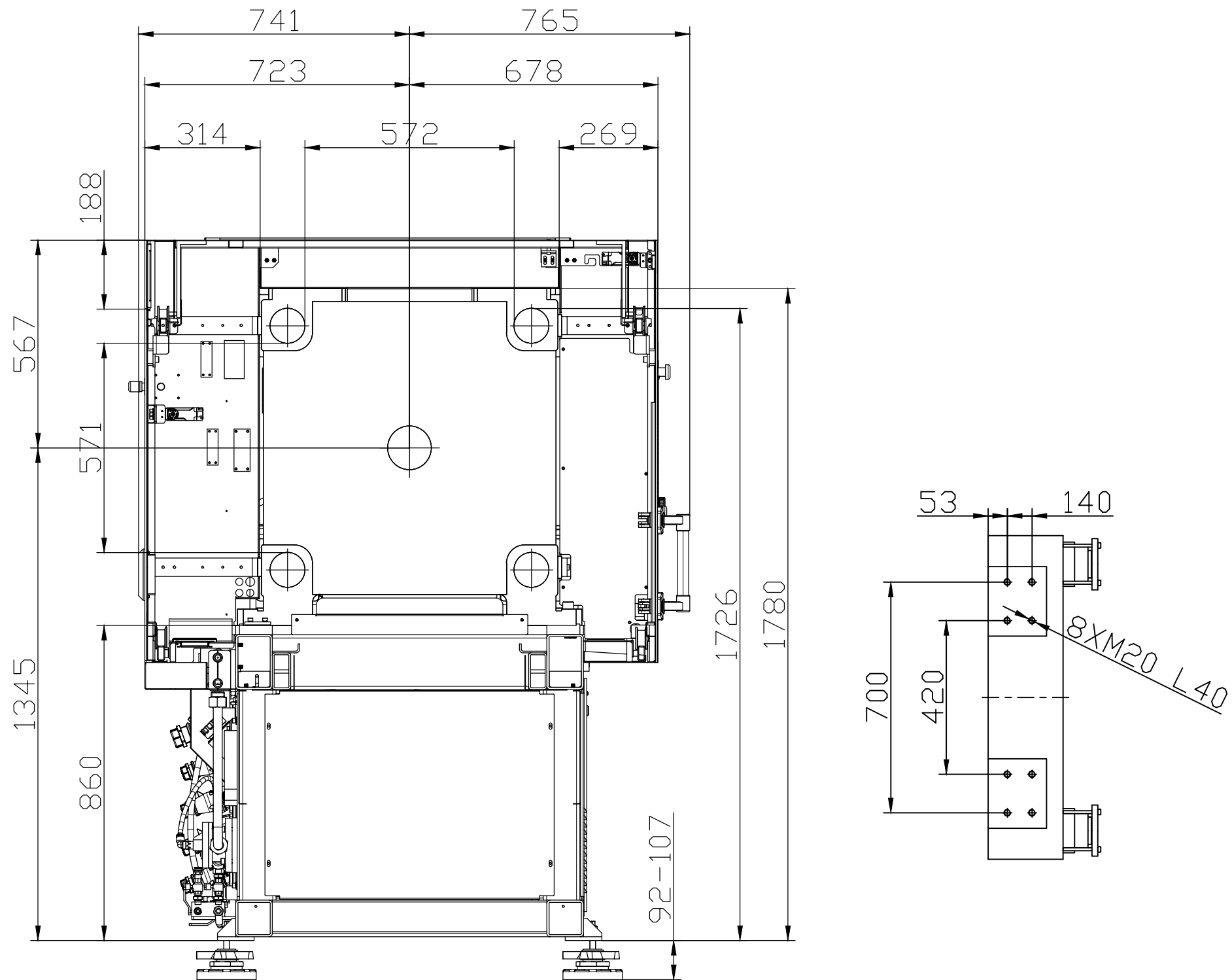
The designs on this drawing were validated using machine manufacturer's drawings and/or information supplied by Absolute or the customer. It is the responsibility of the customer to review and confirm that all dimensions are consistent with the application intended and in accordance with the facility requirements for space, part clearance, overhead clearance, or any other interference. By signing this document, the customer accepts full responsibility for this design and application.

Customer:

Customer Approval:

Authorized Signature

Notes:



Absolute Haitian Corporation  
 33 Southgate St. Worcester, MA  
 T:+1 508-792-4305  
 www.absolutehaitian.com

Title: ZE V 1900 Robot Mounting Drawing

Machine Model: ZE V 1900  
 Machine Serial Number:  
 Machine Tonnage:

Sheet: 1 of 1

Drawn By: Harry Date: 4/9/2024  
 Chkd By: LEON XIE Date: 4/9/2024

Revision Date: Drawing #: Robot Mounting

Rev #: 1  
 Rev #: 2  
 Rev #: 3  
 Rev #: 4  
 Rev #: 5

NOT TO SCALE Size: 11 X 17 "B"

Units: mm / [in]  
 Material:  
 Part:  
 Part:  
 Part:  
 Part:

PLEASE READ:

The designs on this drawing were validated using machine manufacturer's drawings and/or information supplied by Absolute or the customer. It is the responsibility of the customer to review and confirm that all dimensions are consistent with the application intended and in accordance with the facility requirements for space, part clearance, overhead clearance, or any other interference. By signing this document, the customer accepts full responsibility for this design and application.

Customer:

Customer Approval:  
 Authorized Signature

Notes: