

Specification



ZE6500V-1700

ZERES 5 Series: Electric with Integrated Hydraulics



Clamping Unit		ZE6500 V
Clamping Force	kN	6500
	US Tons	731
Mold Opening Stroke	mm	1000
	in.	39.37
Minimum Mold Height	mm	420
	in.	16.54
Maximum Mold Height	mm	1000
	in.	39.37
Maximum Daylight	mm	2000
	in.	78.74
Distance Between Tie-Bars (HXV)	mm	1080x1080
	in.	42.52x42.52
Platen Dimensions (HXV)	mm	1460x1460
	in.	57.48x57.48
Minimum Mold Size	mm	700x700
	in.	27.56x27.56
Ejector Stroke	mm	200
	in.	7.87
Ejector Force	kN	196
	US Tons	22

Specification



ZE6500V-1700

ZERES 5 Series: Electric with Integrated Hydraulics

Other		
Connection Power	kW/A	1700:58/98 1700h:74/125 1700hs:83/139
Heating Power	kW	33.1
Machine Dimension	m in.	9.70x2.44x2.70 382x96x106
Machine Weight	t lbs.	32.72 72135
Hopper Capacity	l gal	50 13
Oil Pressure	MPa psi	17.5 2538
Oil Flow	l/min gal/min	252 67
Oil Tank	l gal	353 93

***NOTE:**

1. Machine dimensions and weights are based on the international standard configuration and are for reference only. Any options or country specific requirements will affect this. Contact Absolute Haitian service department for machine specific information.
2. Power requirements are based on the international standard configuration and are for reference only. Any options or country specific requirements will affect this. Contact Absolute Haitian service department for machine specific information.

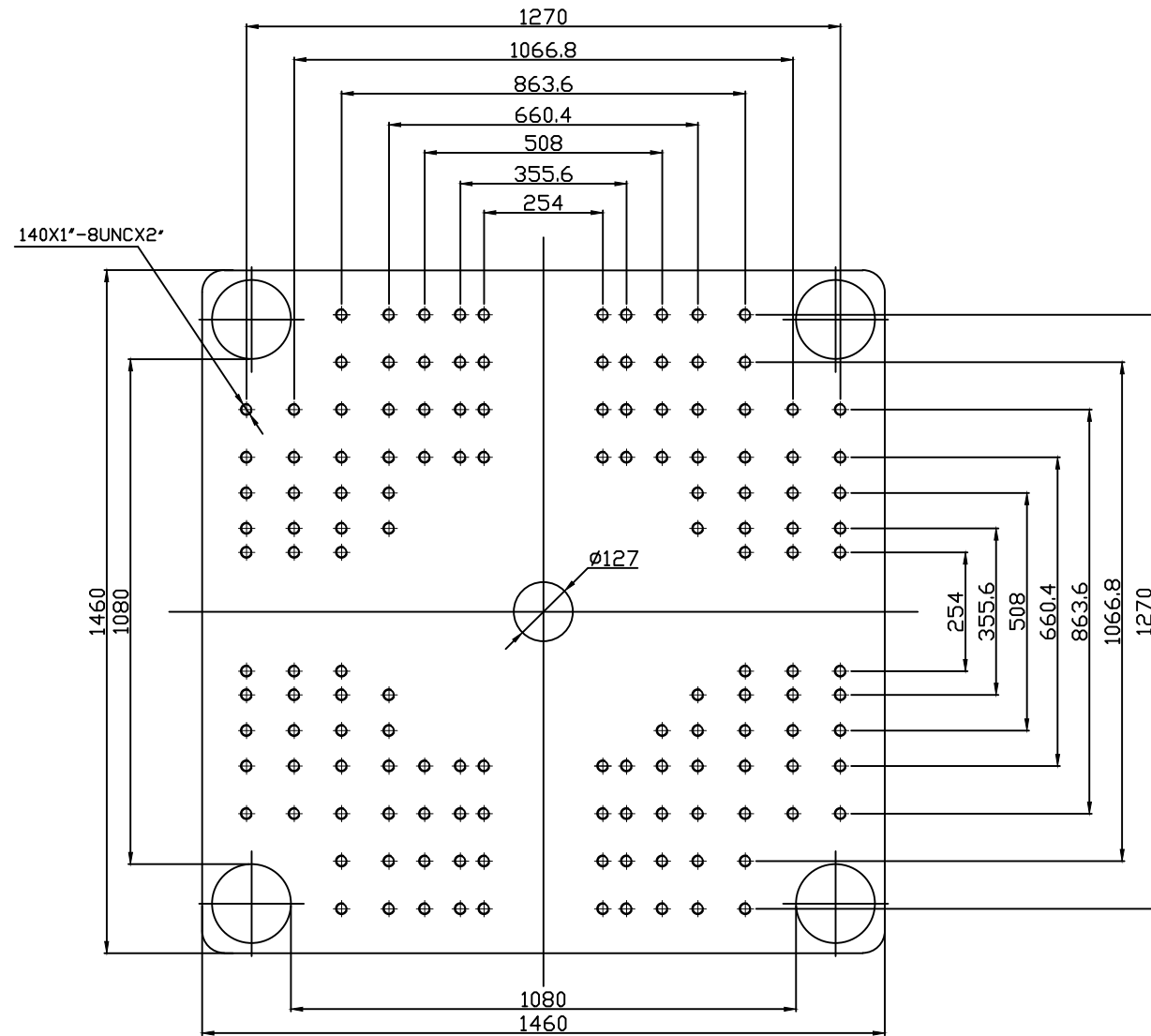
Specification



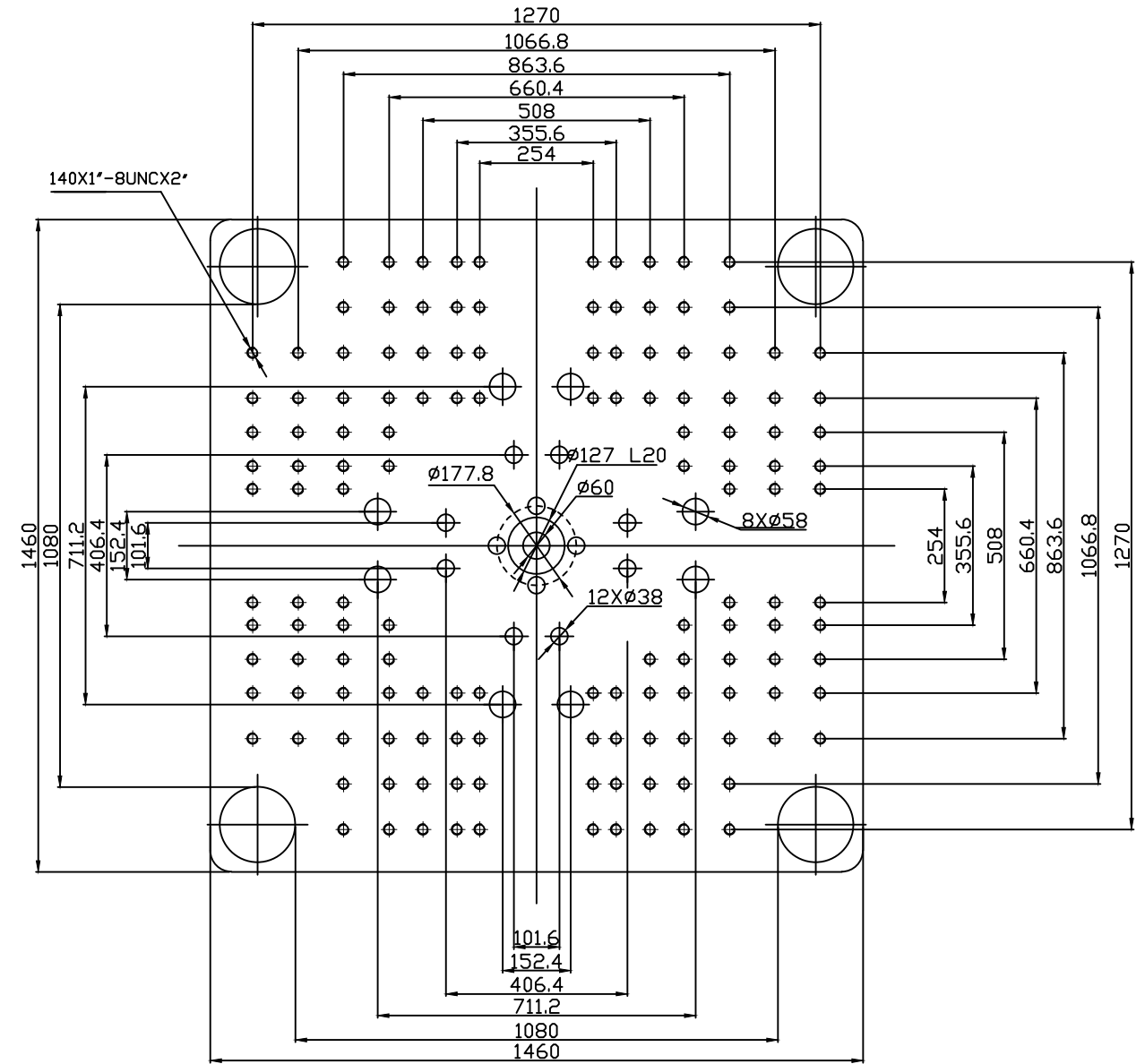
ZE6500V-1700

ZERES 5 Series: Electric with Integrated Hydraulics

Injection Unit		1700		
Screw & Barrel Designation		A	B	C
Screw Diameter	mm	60	65	70
	in.	2.36	2.56	2.76
Screw L/D Ratio	L/D	21.6	20	18.6
Injection Volume (Theoretical)	cm ³	791	929	1077
	cu.in.	48.27	56.69	65.72
Injection Weight (PS)	g	720	845	980
	oz.	25.40	29.81	34.57
Injection Pressure	MPa	210	180	155
	psi	30458	26107	22481
Holding Pressure	MPa	187	160	138
	psi	27122	23206	20015
Screw Speed	rpm	250	250	250
Plasticizing Rate (GPPS)	g/s	57	68	72
	oz./s	2.01	2.40	2.54
Nozzle Contact Force	kN	85	85	85
	US Tons	10	10	10
Injection Unit		1700		
Injection Speed	mm/s	160		
	in./s	6.3		
Injection Rate (PS)	g/s	395	463	537
	oz./s	13.93	16.33	18.94
Injection Unit		1700h		
Injection Speed	mm/s	250		
	in./s	9.84		
Injection Rate (PS)	g/s	617	724	840
	oz./s	21.76	25.54	29.63
Injection Unit		1700hs		
Injection Speed	mm/s	350		
	in./s	13.78		
Injection Rate (PS)	g/s	864	1014	1176
	oz./s	30.48	35.77	41.48



Fixed Platen



Moving Platen



Absolute Haitian Corporation
33 Southgate St. Worcester, MA
T: +1 508-792-4305
www.absolutehaitian.com

Title: ZE/VEV 6500 Fixed & Moving Platens Drawing

Machine Model: ZE/VEV 6500
Machine Serial Number:
Machine Tonnage:

Sheet: 1 of 1

Drawn By: Harry Date: 1/9/2024
Chkd By: LEON XIE Date: 1/9/2024

Revision	Date:	Drawing #:
Rev #: 1		
Rev #: 2		
Rev #: 3		
Rev #: 4		
Rev #: 5		

NOT TO SCALE Size: 11 X 17 "B"
Units: mm / [in]
Material:
Part:
Part:
Part:
Part:

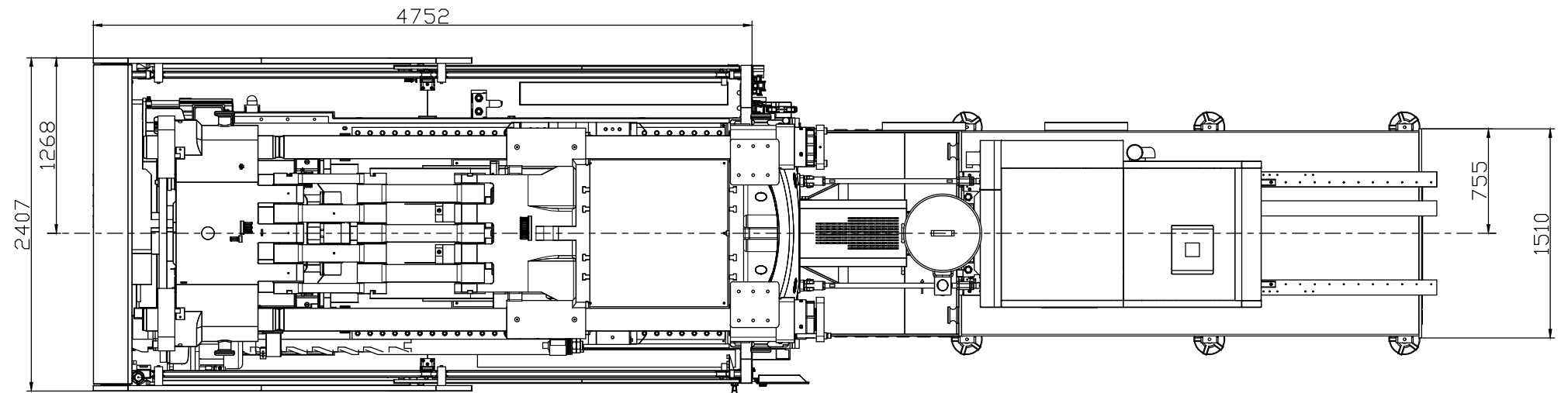
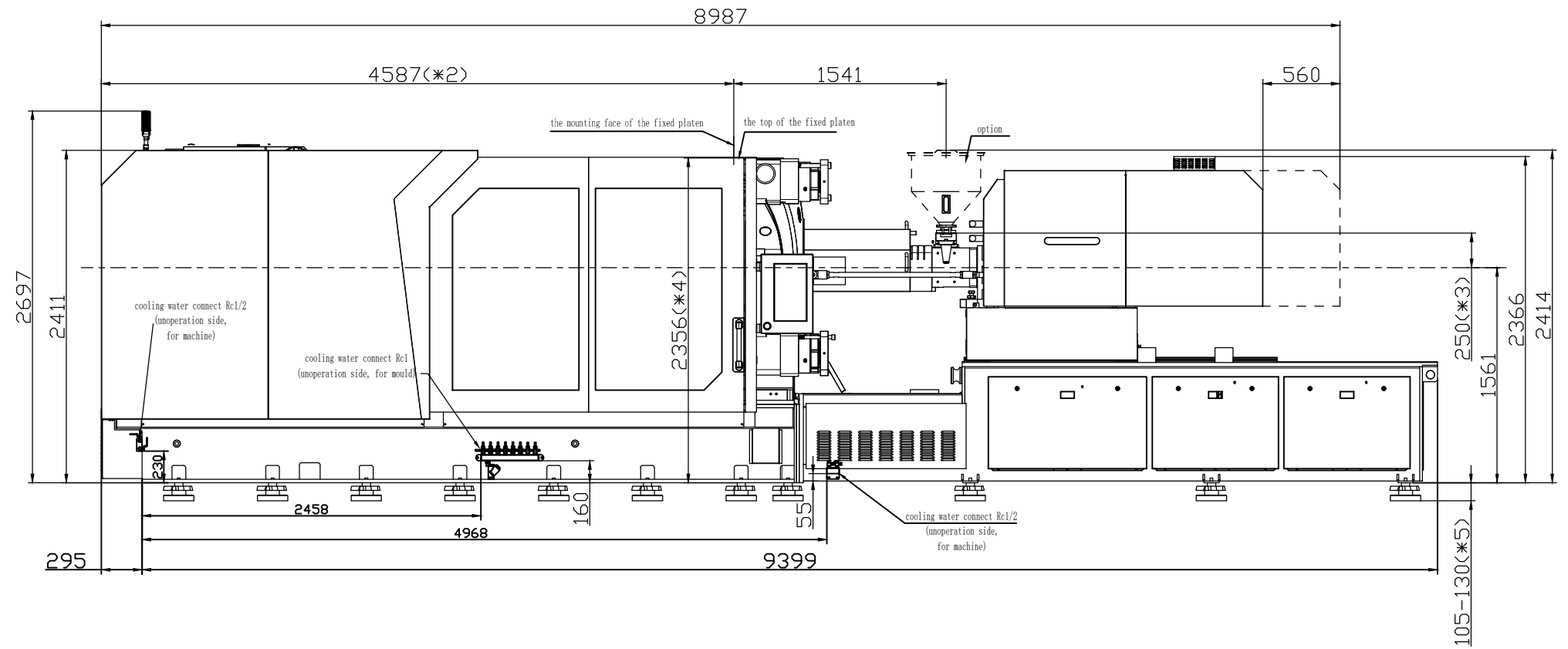
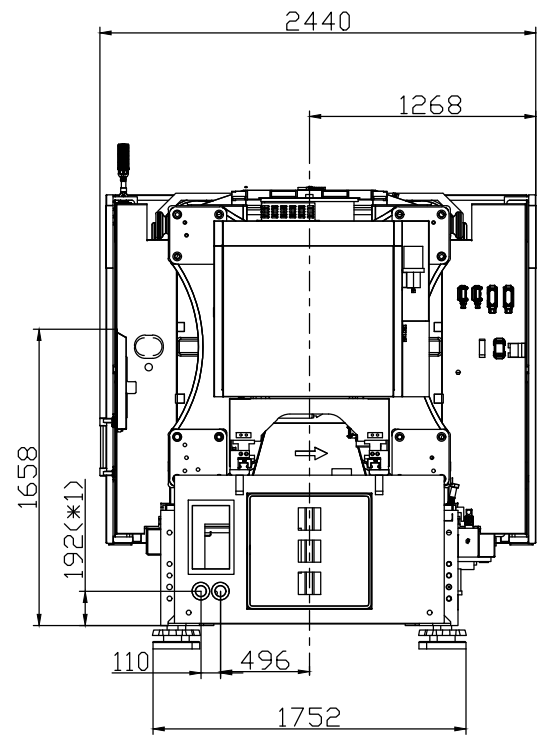
PLEASE READ:

The designs on this drawing were validated using machine manufacturer's drawings and/or information supplied by Absolute or the customer. It is the responsibility of the customer to review and confirm that all dimensions are consistent with the application intended and in accordance with the facility requirements for space, part clearance, overhead clearance, or any other interference. By signing this document, the customer accepts full responsibility for this design and application.

Customer:

Customer Approval:
Authorized Signature

Notes:



- *1 Power in
Current and Power Cable are shown
in the Main Power Supply Circuit
- *2 To the mounting face of the
fixed platen
- *3 To the face of Hopper fixing platform
- *4 To the top of the fixed platen
- *5 Vibration dumping support



Absolute Haitian Corporation
33 Southgate St. Worcester, MA
T: +1 508-792-4305
www.absolutehaitian.com

Title: ZE V 6500-1700 Layout Drawing

Machine Model: ZE V 6500-1700
Machine Serial Number:
Machine Tonnage:

Sheet: 1 of 1

Drawn By: Harry Date: 3/22/2024
Chkd By: LEON XIE Date: 3/22/2024

NOT TO SCALE Size: 11 X 17 "B"

Revision	Date:	Drawing #:	Layout
Rev #: 1			
Rev #: 2			
Rev #: 3			
Rev #: 4			
Rev #: 5			

Units: mm / [in]
Material:
Part:
Part:
Part:
Part:
Part:

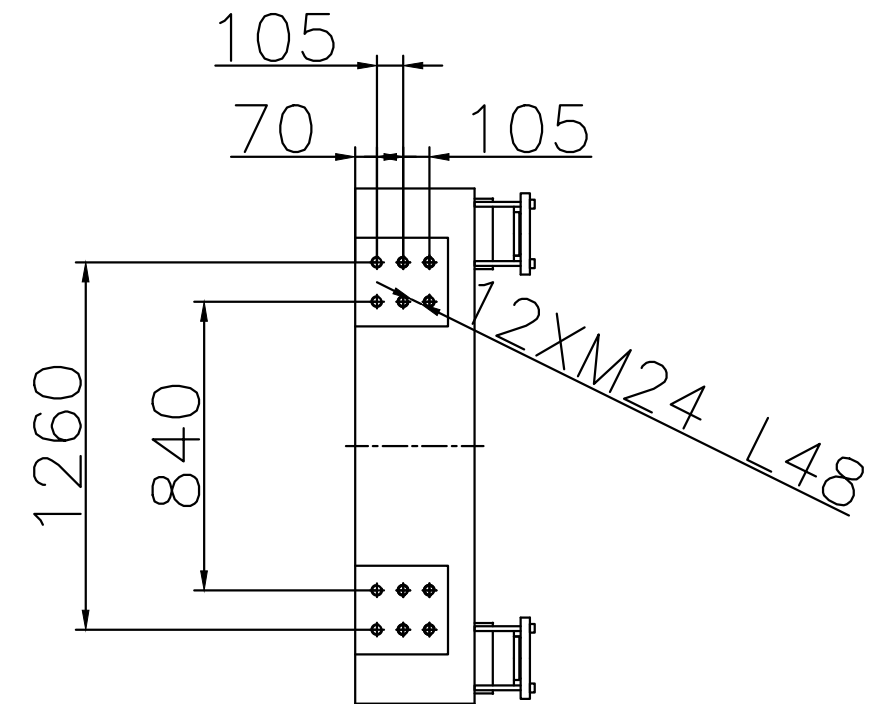
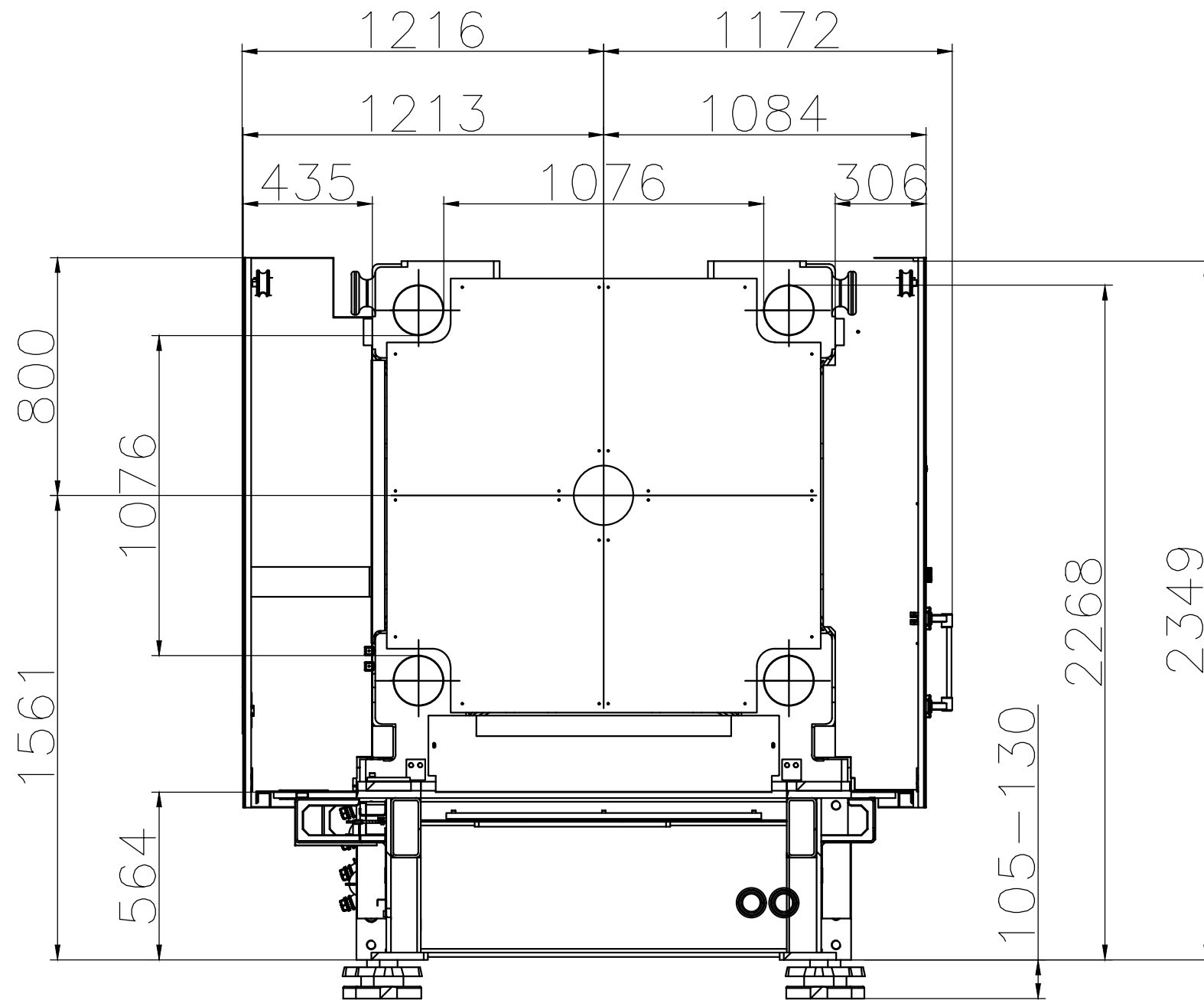
PLEASE READ:

The designs on this drawing were validated using machine manufacturer's drawings and/or information supplied by Absolute or the customer. It is the responsibility of the customer to review and confirm that all dimensions are consistent with the application intended and in accordance with the facility requirements for space, part clearance, overhead clearance, or any other interference. By signing this document, the customer accepts full responsibility for this design and application.

Customer:

Customer Approval:
Authorized Signature

Notes:



Absolute Haitian Corporation
 33 Southgate St. Worcester, MA
 T:+1 508-792-4305
 www.absolutehaitian.com

Title: ZE V 6500 Robot Mounting Drawing

Machine Model: ZE V 6500
 Machine Serial Number:
 Machine Tonnage:

Sheet: 1 of 1

Drawn By: Harry Date: 4/9/2024
 Chkd By: LEON XIE Date: 4/9/2024

Revision	Date:	Drawing #: Robot Mounting
Rev #: 1		
Rev #: 2		
Rev #: 3		
Rev #: 4		
Rev #: 5		

NOT TO SCALE Size: 11 X 17 "B"
 Units: mm / [in]
 Material:
 Part:
 Part:
 Part:
 Part:

PLEASE READ:

The designs on this drawing were validated using machine manufacturer's drawings and/or information supplied by Absolute or the customer. It is the responsibility of the customer to review and confirm that all dimensions are consistent with the application intended and in accordance with the facility requirements for space, part clearance, overhead clearance, or any other interference. By signing this document, the customer accepts full responsibility for this design and application.

Customer:

Customer Approval:
 Authorized Signature

Notes: