

Specification



ZE1500V-210

ZERES 5 Series: Electric with Integrated Hydraulics



Clamping Unit		ZE1500 V
Clamping Force	kN	1500
	US Tons	169
Mold Opening Stroke	mm	420
	in.	16.54
Minimum Mold Height	mm	180
	in.	7.09
Maximum Mold Height	mm	520
	in.	20.47
Maximum Daylight	mm	940
	in.	37.01
Distance Between Tie-Bars (HXV)	mm	520x520
	in.	20.47x20.47
Platen Dimensions (HXV)	mm	740x740
	in.	29.13x29.13
Minimum Mold Size	mm	335x335
	in.	13.19x13.19
Ejector Stroke	mm	120
	in.	4.72
Ejector Force	kN	33
	US Tons	4

Specification



ZE1500V-210

ZERES 5 Series: Electric with Integrated Hydraulics

Injection Unit		210			
Screw & Barrel Designation		AA	A	B	C
Screw Diameter	mm	26	28	32	36
	in.	1.02	1.10	1.26	1.42
Screw L/D Ratio	L/D	21	21	21	18.6
Injection Volume (Theoretical)	cm ³	61	70	100	127
	cu.in.	3.72	4.27	6.10	7.75
Injection Weight (PS)	g	55	64	91	115
	oz.	1.94	2.26	3.21	4.06
Injection Pressure	MPa	280	260	200	160
	psi	40611	37710	29008	23206
Holding Pressure	MPa	224	206	160	126
	psi	32488	29878	23206	18275
Screw Speed	rpm	400	400	400	400
Plasticizing Rate (GPPS)	g/s	8.5	11	16	19.4
	oz./s	0.30	0.39	0.56	0.68
Nozzle Contact Force	kN	26	26	26	26
	US Tons	3	3	3	3
Injection Unit		210			
Injection Speed	mm/s	200			
	in./s	7.87			
Injection Rate (PS)	g/s	92	107	140	177
	oz./s	3.25	3.77	4.94	6.24
Injection Unit		210h			
Injection Speed	mm/s	350			
	in./s	13.78			
Injection Rate (PS)	g/s	162	188	245	311
	oz./s	5.71	6.63	8.64	10.97
Injection Unit		210hs			
Injection Speed	mm/s	500			
	in./s	19.69			
Injection Rate (PS)	g/s	231	268	351	444
	oz./s	8.15	9.45	12.38	15.66

Specification



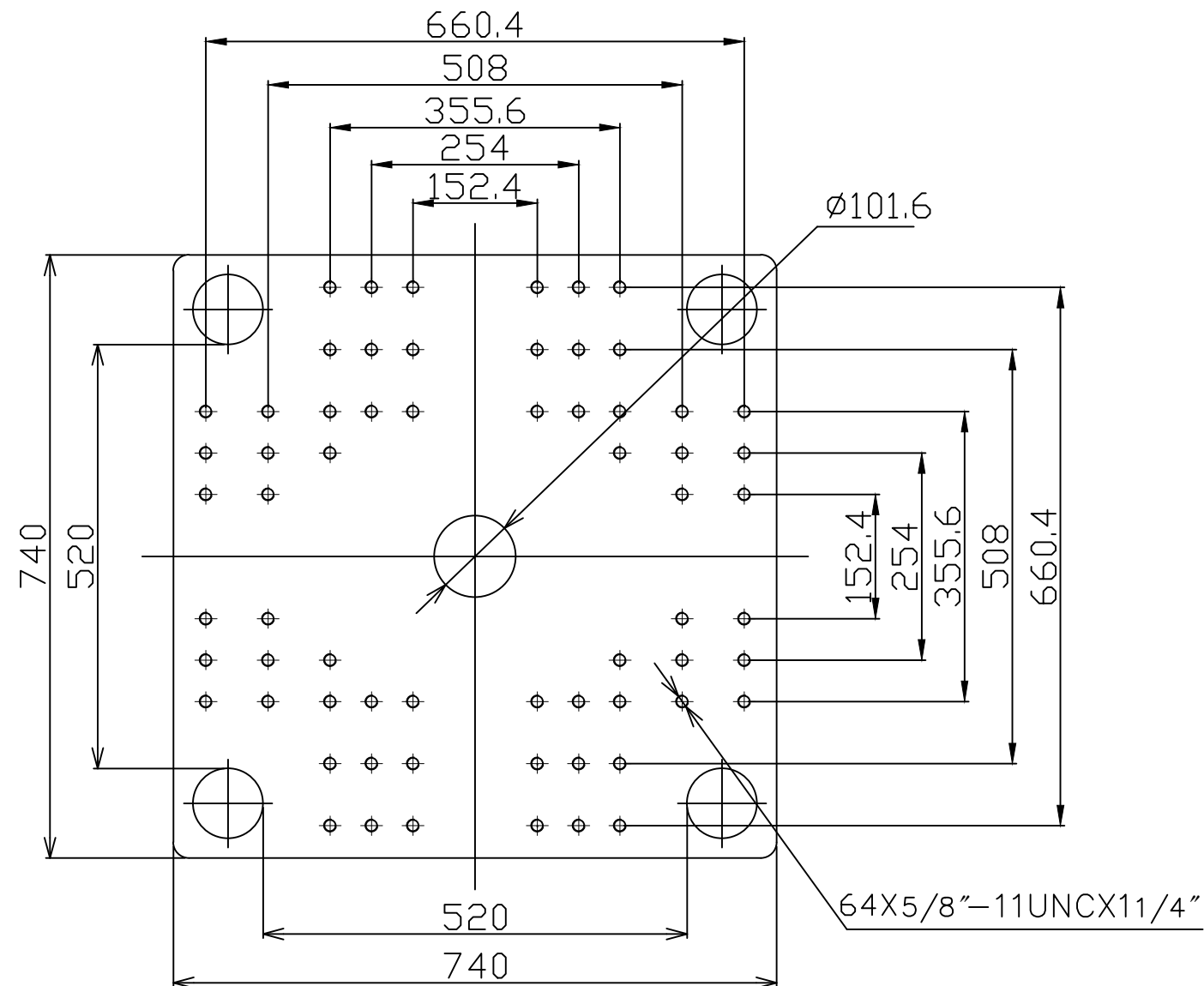
ZE1500V-210

ZERES 5 Series: Electric with Integrated Hydraulics

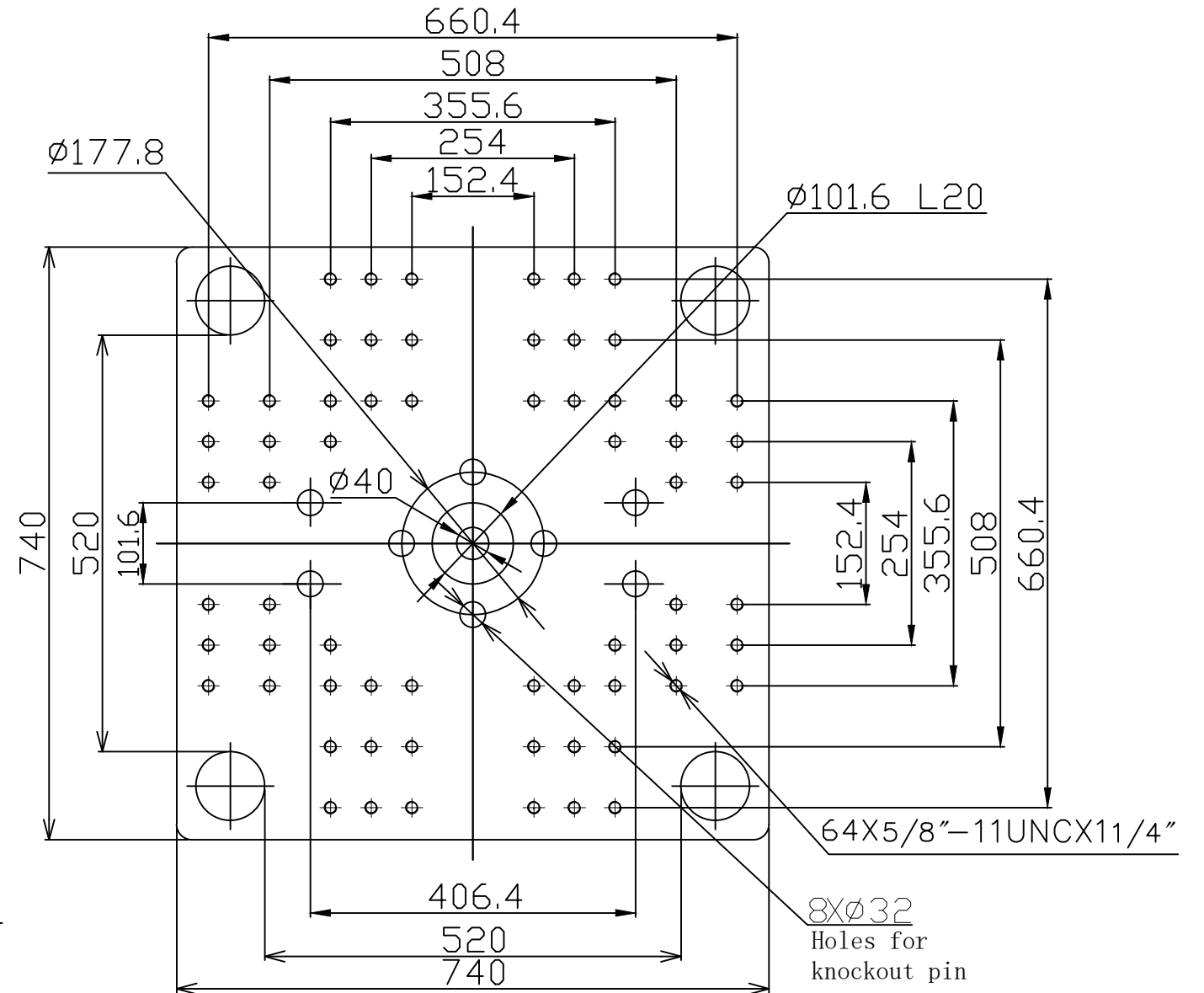
Other					
Connection Power	kW/A				210:16/26 210h:21/36 210hs:29/48
Heating Power	kW	6.9	7.8	9.2	9.2
Machine Dimension	m				5.26x1.41x2.21
	in.				207x56x87
Machine Weight	t				5.98
	lbs.				13184
Hopper Capacity	l				25
	gal				7
Oil Pressure	MPa				17.5
	psi				2538
Oil Flow	l/min				48
	gal/min				13
Oil Tank	l				67
	gal				18

***NOTE:**

1. Machine dimensions and weights are based on the international standard configuration and are for reference only. Any options or country specific requirements will affect this. Contact Absolute Haitian service department for machine specific information.
2. Power requirements are based on the international standard configuration and are for reference only. Any options or country specific requirements will affect this. Contact Absolute Haitian service department for machine specific information.



Fixed Platen



Moving Platen



Absolute Haitian Corporation
33 Southgate St. Worcester, MA
T: +1 508-792-4305
www.absolutehaitian.com

Title: ZE/VEV 1500 Fixed & Moving Platens Drawing

Machine Model: ZE/VEV 1500
Machine Serial Number:
Machine Tonnage:

Sheet: 1 of 1

Drawn By: Harry Date: 1/9/2024
Chkd By: LEON XIE Date: 1/9/2024

Revision	Date:	Drawing #:	NOT TO SCALE	Size: 11 X 17 "B"
Rev #: 1				Units: mm / [in]
Rev #: 2				Material:
Rev #: 3				Part:
Rev #: 4				Part:
Rev #: 5				Part:

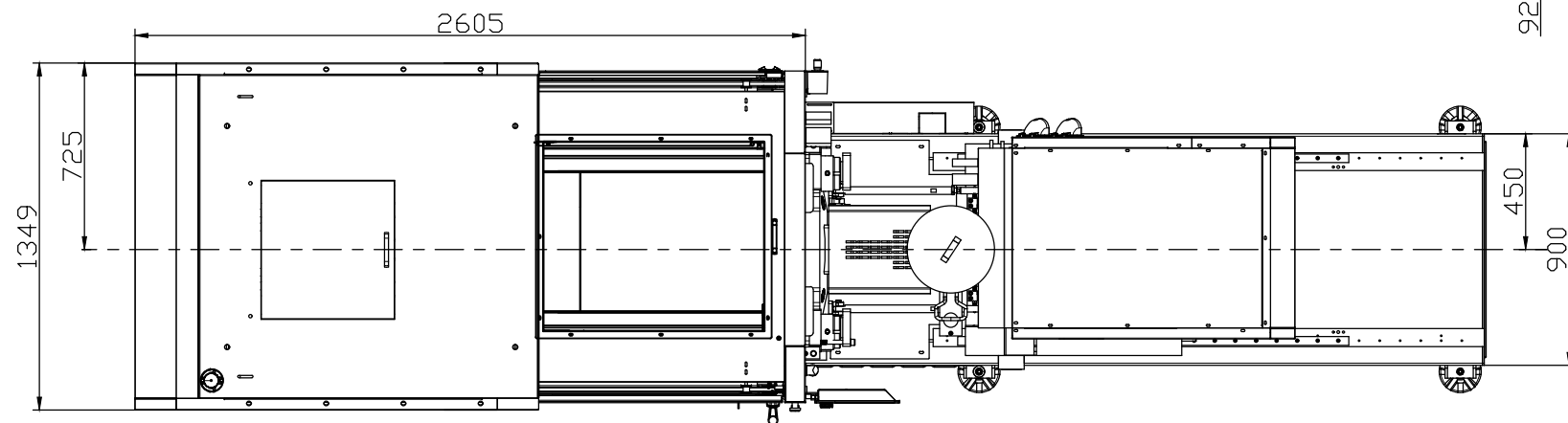
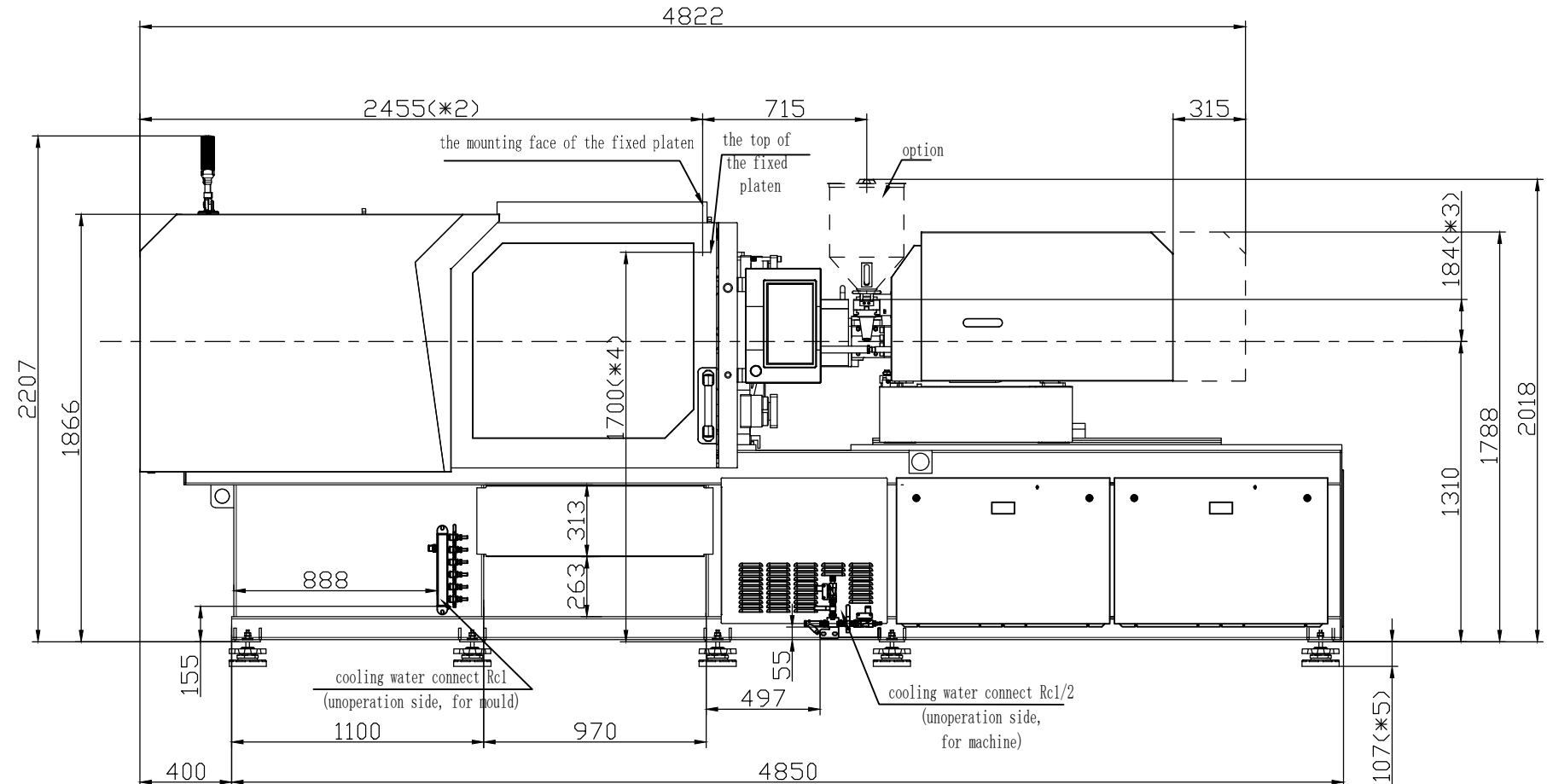
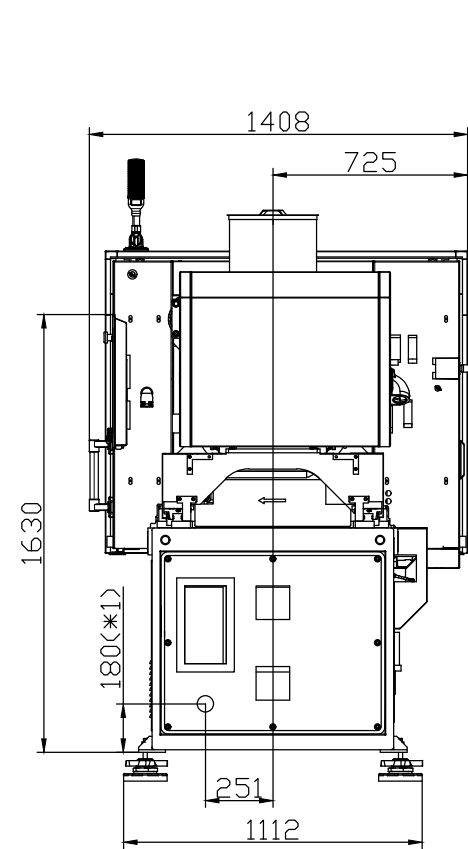
PLEASE READ:

The designs on this drawing were validated using machine manufacturer's drawings and/or information supplied by Absolute or the customer. It is the responsibility of the customer to review and confirm that all dimensions are consistent with the application intended and in accordance with the facility requirements for space, part clearance, overhead clearance, or any other interference. By signing this document, the customer accepts full responsibility for this design and application.

Customer:

Customer Approval:
Authorized Signature

Notes:



- *1 Power in Current and Power Cable are shown in the Main Power Supply Circuit
- *2 To the mounting face of the fixed platen
- *3 To the face of Hopper fixing platform
- *4 To the top of the fixed platen
- *5 Vibration dumping support



Absolute Haitian Corporation
33 Southgate St. Worcester, MA
T:+1 508-792-4305
www.absolutehaitian.com

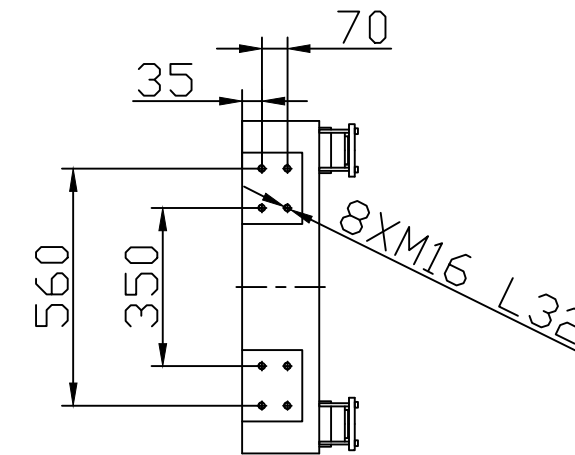
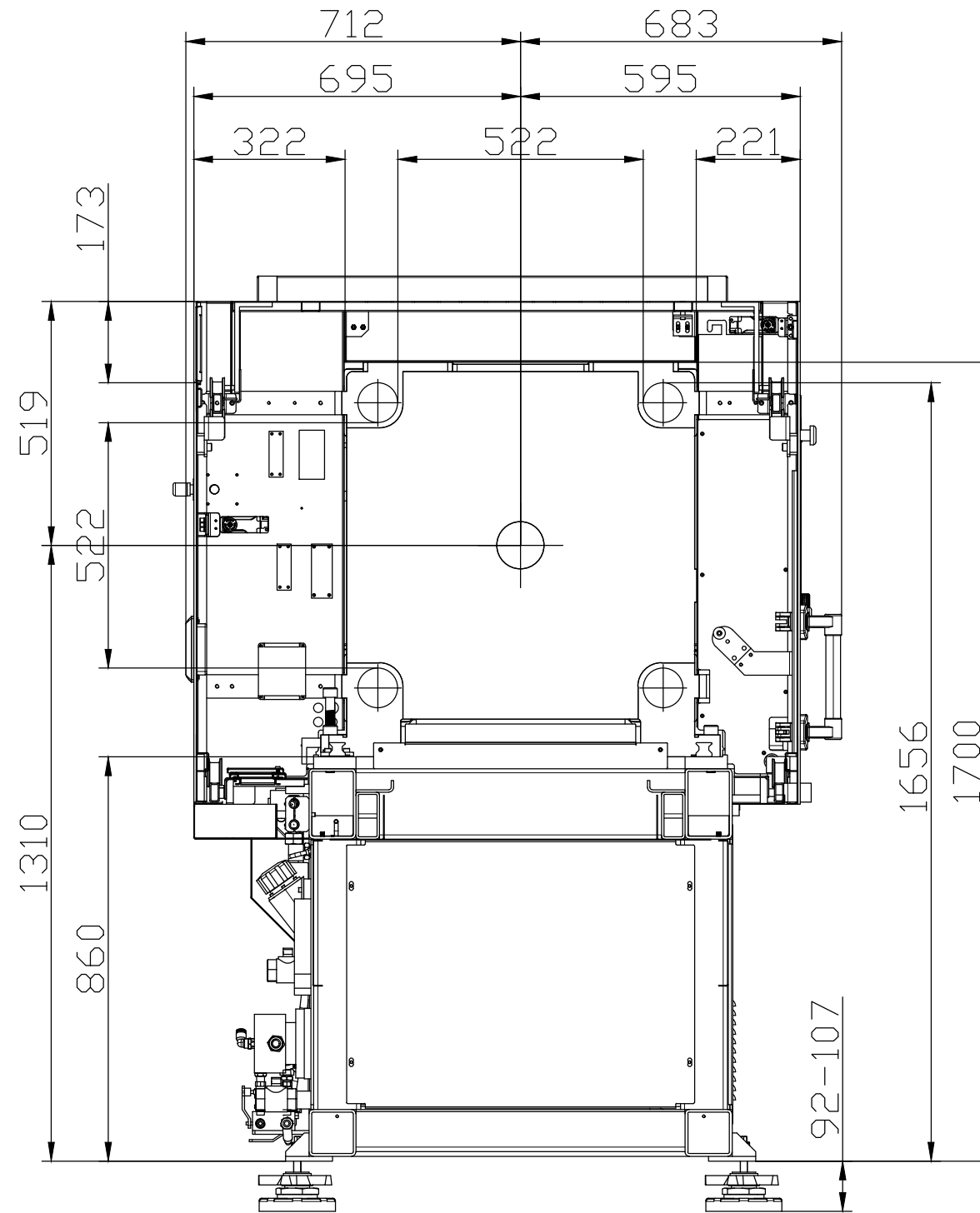
Title: ZE V 1500-2100 Layout Drawing			Sheet: 1 of 1	
Machine Model: ZE V 1500-2100			Drawn By: Harry	Date: 3/22/2024
Machine Serial Number:			Chkd By: LEON XIE	Date: 3/22/2024
Machine Tonnage:			NOT TO SCALE	Size: 11 X 17 "B"
Revision	Date:	Drawing #: Layout	Units: mm / [in]	
Rev #: 1			Material:	
Rev #: 2			Part:	
Rev #: 3			Part:	
Rev #: 4			Part:	
Rev #: 5			Part:	

PLEASE READ:
The designs on this drawing were validated using machine manufacturer's drawings and/or information supplied by Absolute or the customer. It is the responsibility of the customer to review and confirm that all dimensions are consistent with the application intended and in accordance with the facility requirements for space, part clearance, overhead clearance, or any other interference. By signing this document, the customer accepts full responsibility for this design and application.

Customer:

Customer Approval:
Authorized Signature

Notes:



Absolute Haitian Corporation
 33 Southgate St. Worcester, MA
 T:+1 508-792-4305
 www.absolutehaitian.com

Title: ZE V 1500 Robot Mounting Drawing			Sheet: 1 of 1	
Machine Model: ZE V 1500			Drawn By: Harry	Date: 4/9/2024
Machine Serial Number:			Chkd By: LEON XIE	Date: 4/9/2024
Machine Tonnage:			NOT TO SCALE	Size: 11 X 17 "B"
Revision	Date:	Drawing #: Robot Mounting	Units: mm / [in]	
Rev #: 1			Material: Part: Part: Part: Part:	
Rev #: 2				
Rev #: 3				
Rev #: 4				
Rev #: 5				

PLEASE READ:

The designs on this drawing were validated using machine manufacturer's drawings and/or information supplied by Absolute or the customer. It is the responsibility of the customer to review and confirm that all dimensions are consistent with the application intended and in accordance with the facility requirements for space, part clearance, overhead clearance, or any other interference. By signing this document, the customer accepts full responsibility for this design and application.

Customer:

Customer Approval:
 Authorized Signature

Notes: