

# Specification



## ZE2300V-830

ZERES 5 Series: Electric with Integrated Hydraulics



Clamping Unit		ZE2300 V
Clamping Force	kN	2300
	US Tons	259
Mold Opening Stroke	mm	550
	in.	21.65
Minimum Mold Height	mm	220
	in.	8.66
Maximum Mold Height	mm	600
	in.	23.62
Maximum Daylight	mm	1150
	in.	45.28
Distance Between Tie-Bars (HXV)	mm	620x620
	in.	24.41x24.41
Platen Dimensions (HXV)	mm	880x880
	in.	34.65x34.65
Minimum Mold Size	mm	400x400
	in.	15.75x15.75
Ejector Stroke	mm	150
	in.	5.91
Ejector Force	kN	55
	US Tons	6

# Specification



## ZE2300V-830

ZERES 5 Series: Electric with Integrated Hydraulics

Injection Unit		830		
Screw & Barrel Designation		A	B	C
Screw Diameter	mm	45	50	55
	in.	1.77	1.97	2.17
Screw L/D Ratio	L/D	22.2	20	18
Injection Volume (Theoretical)	cm <sup>3</sup>	333	412	498
	cu.in.	20.32	25.14	30.39
Injection Weight (PS)	g	304	375	454
	oz.	10.72	13.23	16.01
Injection Pressure	MPa	247	200	165
	psi	35824	29008	23931
Holding Pressure	MPa	197	160	132
	psi	28572	23206	19145
Screw Speed	rpm	320	320	320
Plasticizing Rate (GPPS)	g/s	35	46	60
	oz./s	1.23	1.62	2.12
Nozzle Contact Force	kN	85	85	85
	US Tons	10	10	10
Injection Unit		830		
Injection Speed	mm/s	160		
	in./s	6.3		
Injection Rate (PS)	g/s	222	274	332
	oz./s	7.83	9.67	11.71
Injection Unit		830h		
Injection Speed	mm/s	250		
	in./s	9.84		
Injection Rate (PS)	g/s	347	428	518
	oz./s	12.24	15.10	18.27
Injection Unit		830hs		
Injection Speed	mm/s	350		
	in./s	13.78		
Injection Rate (PS)	g/s	486	600	726
	oz./s	17.14	21.16	25.61

# Specification



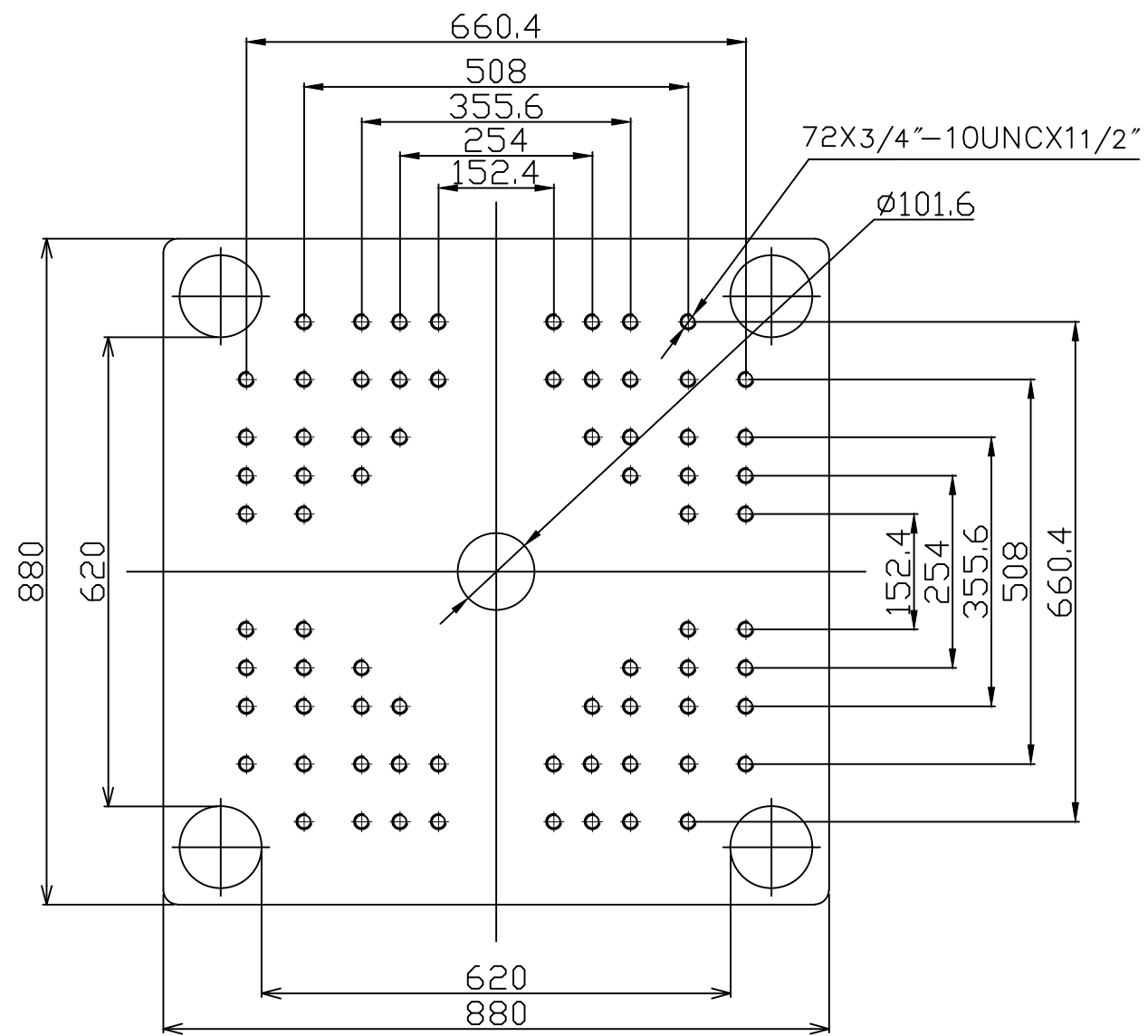
## ZE2300V-830

ZERES 5 Series: Electric with Integrated Hydraulics

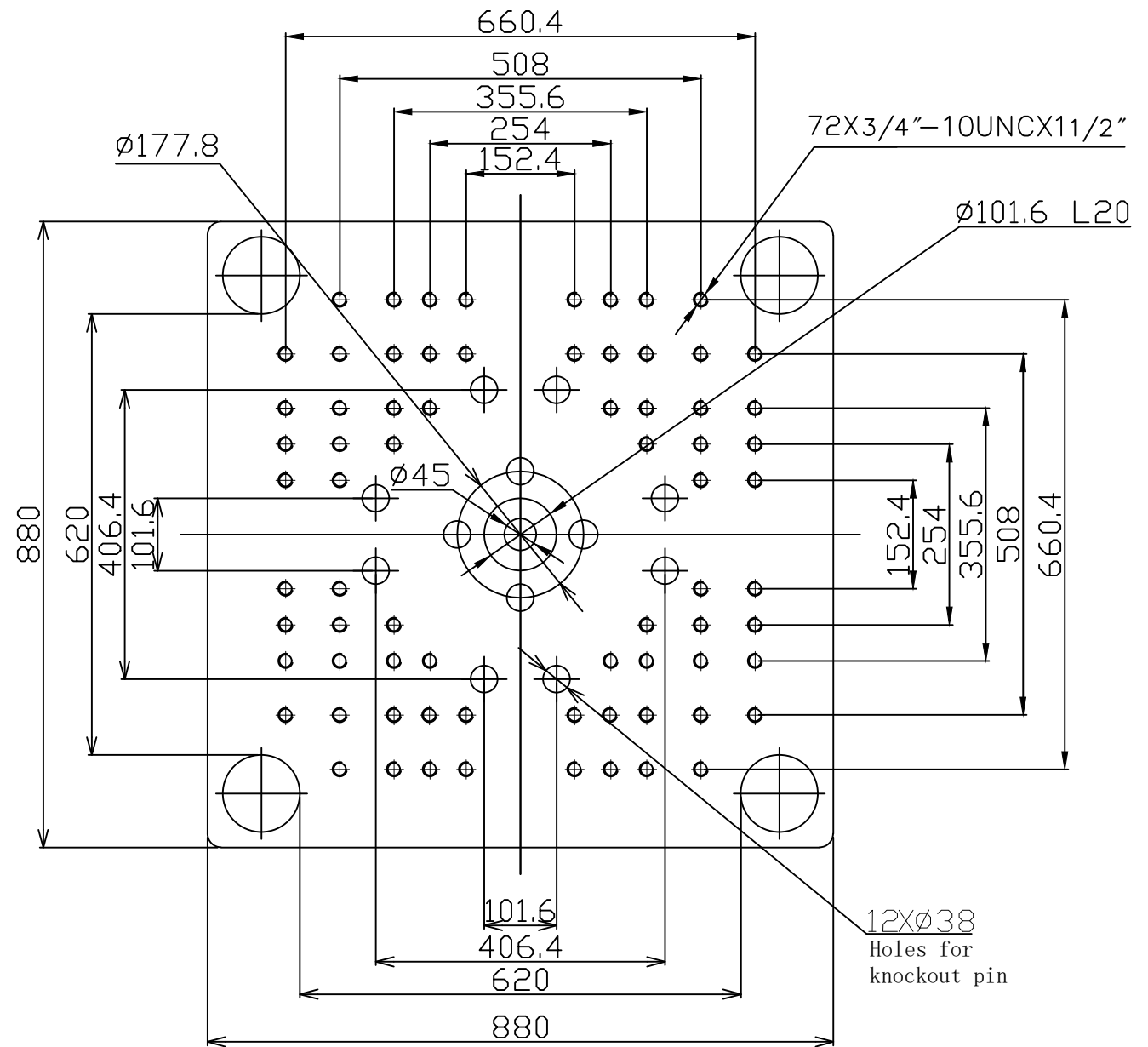
Other		
Connection Power	kW/A	830:34/58 830h:38/65 830hs:58/98
Heating Power	kW	20.2
Machine Dimension	m in.	6.44x1.64x2.39 254x65x94
Machine Weight	t lbs.	10.64 23457
Hopper Capacity	l gal	50 13
Oil Pressure	MPa psi	17.5 2538
Oil Flow	l/min gal/min	79 21
Oil Tank	l gal	104 27

**\*NOTE:**

1. Machine dimensions and weights are based on the international standard configuration and are for reference only. Any options or country specific requirements will affect this. Contact Absolute Haitian service department for machine specific information.
2. Power requirements are based on the international standard configuration and are for reference only. Any options or country specific requirements will affect this. Contact Absolute Haitian service department for machine specific information.



Fixed Platen



Moving Platen



Absolute Haitian Corporation  
 33 Southgate St. Worcester, MA  
 T: +1 508-792-4305  
 www.absolutehaitian.com

Title: ZE/VEV 2300 Fixed & Moving Platens Drawing

Machine Model: ZE/VEV 2300  
 Machine Serial Number:  
 Machine Tonnage:

Sheet: 1 of 1

Drawn By: Harry Date: 1/9/2024  
 Chkd By: LEON XIE Date: 1/9/2024

Revision	Date:	Drawing #:
Rev #: 1		
Rev #: 2		
Rev #: 3		
Rev #: 4		
Rev #: 5		

NOT TO SCALE Size: 11 X 17 "B"  
 Units: mm / [in]  
 Material:  
 Part:  
 Part:  
 Part:  
 Part:

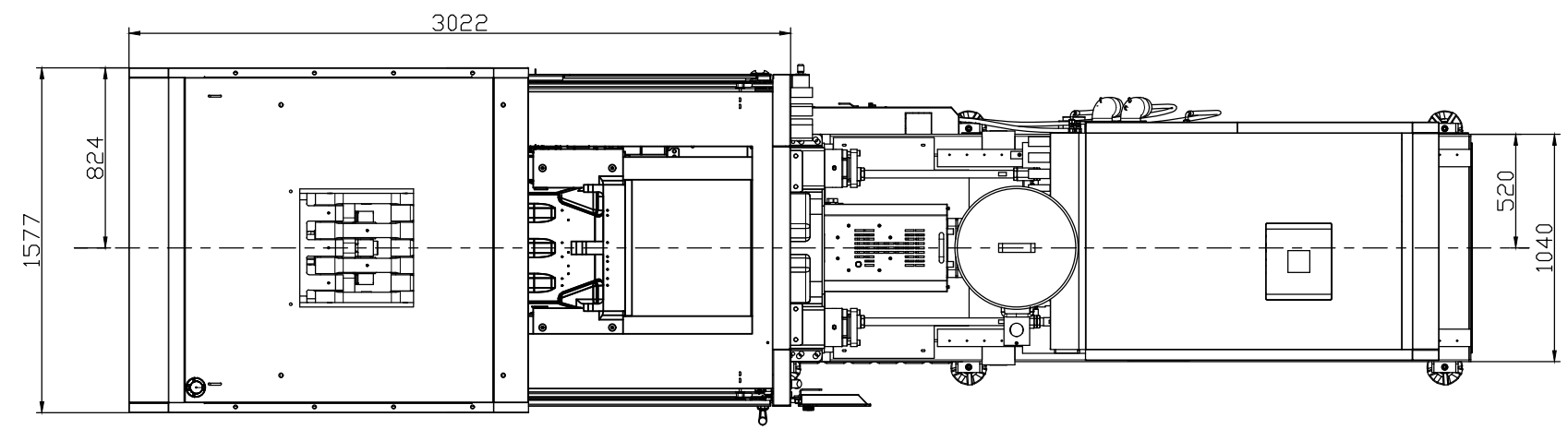
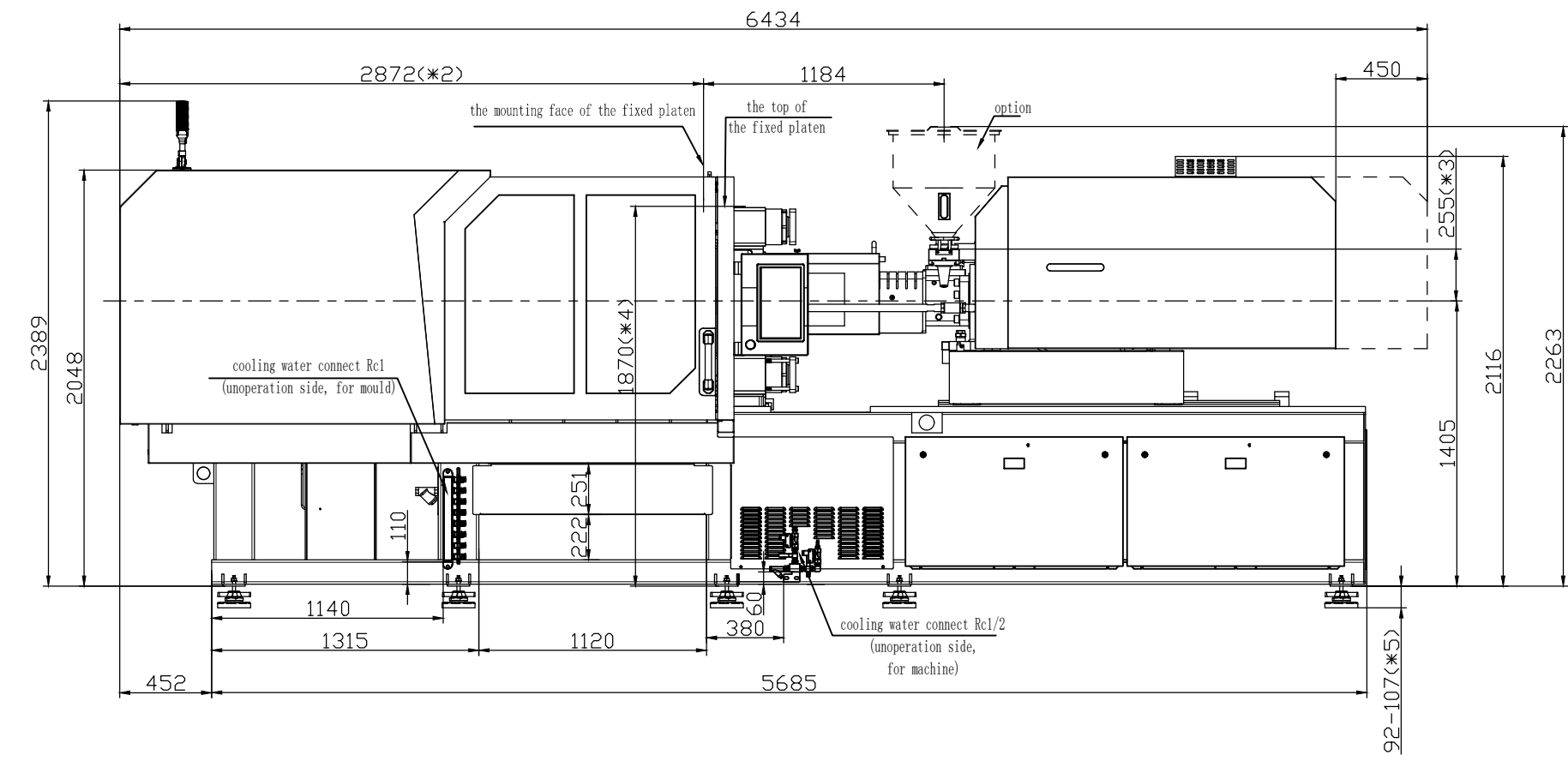
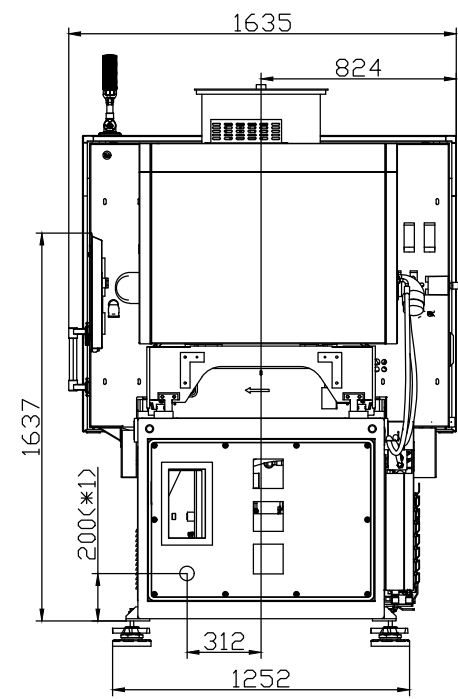
PLEASE READ:

The designs on this drawing were validated using machine manufacturer's drawings and/or information supplied by Absolute or the customer. It is the responsibility of the customer to review and confirm that all dimensions are consistent with the application intended and in accordance with the facility requirements for space, part clearance, overhead clearance, or any other interference. By signing this document, the customer accepts full responsibility for this design and application.

Customer:

Customer Approval:  
 Authorized Signature

Notes:



- \*1 Power in  
Current and Power Cable are shown  
in the Main Power Supply Circuit
- \*2 To the mounting face of the  
fixed platen
- \*3 To the face of Hopper fixing platform
- \*4 To the top of the fixed platen
- \*5 Vibration dumping support



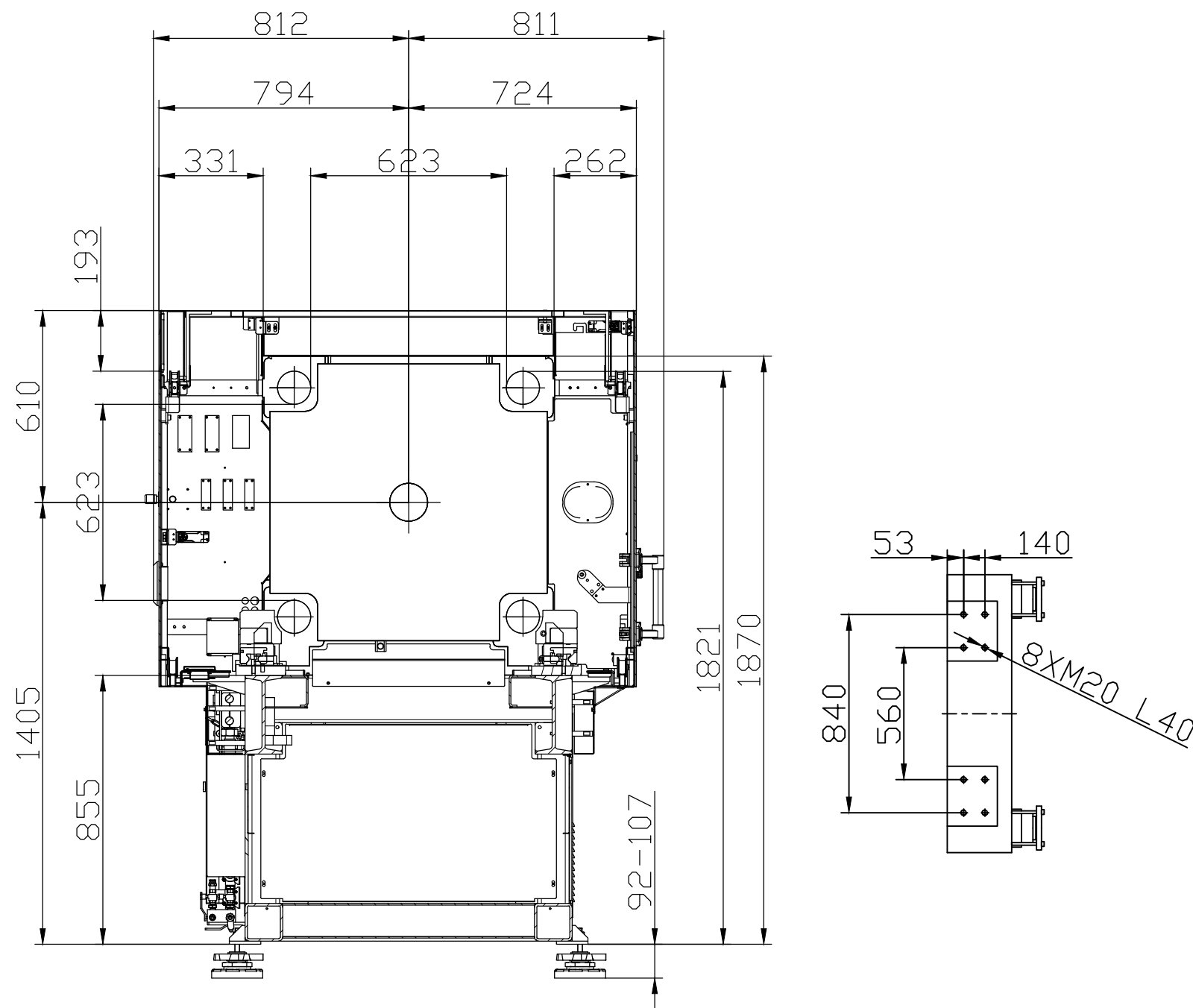
Absolute Haitian Corporation  
33 Southgate St. Worcester, MA  
T: +1 508-792-4305  
www.absolutehaitian.com

Title: ZE V 2300-830 Layout Drawing			Sheet: 1 of 1	
Machine Model: ZE V 2300-830			Drawn By: Harry	Date: 3/22/2024
Machine Serial Number:			Chkd By: LEON XIE	Date: 3/22/2024
Machine Tonnage:			NOT TO SCALE	Size: 11 X 17 "B"
Revision	Date:	Drawing #: Layout	Units: mm / [in]	
Rev #: 1			Material:	
Rev #: 2			Part:	
Rev #: 3			Part:	
Rev #: 4			Part:	
Rev #: 5			Part:	

PLEASE READ:  
The designs on this drawing were validated using machine manufacturer's drawings and/or information supplied by Absolute or the customer. It is the responsibility of the customer to review and confirm that all dimensions are consistent with the application intended and in accordance with the facility requirements for space, part clearance, overhead clearance, or any other interference. By signing this document, the customer accepts full responsibility for this design and application.

Customer: \_\_\_\_\_ Customer Approval: \_\_\_\_\_  
Authorized Signature

Notes:



Absolute Haitian Corporation  
 33 Southgate St. Worcester, MA  
 T:+1 508-792-4305  
 www.absolutehaitian.com

<b>Title: ZE V 2300 Robot Mounting Drawing</b>			
<b>Machine Model: ZE V 2300</b>		<b>Sheet: 1 of 1</b>	
<b>Machine Serial Number:</b>		<b>Drawn By: Harry</b>	<b>Date: 4/9/2024</b>
<b>Machine Tonnage:</b>		<b>Chkd By: LEON XIE</b>	<b>Date: 4/9/2024</b>
<b>Revision</b>	<b>Date:</b>	<b>Drawing #: Robot Mounting</b>	<b>NOT TO SCALE</b>
Rev #: 1			<b>Size: 11 X 17 "B"</b>
Rev #: 2			Units: mm / [in]
Rev #: 3			Material:
Rev #: 4			Part:
Rev #: 5			Part:

**PLEASE READ:**  
 The designs on this drawing were validated using machine manufacturer's drawings and/or information supplied by Absolute or the customer. It is the responsibility of the customer to review and confirm that all dimensions are consistent with the application intended and in accordance with the facility requirements for space, part clearance, overhead clearance, or any other interference. By signing this document, the customer accepts full responsibility for this design and application.

**Customer:** \_\_\_\_\_

**Customer Approval:**  
 Authorized Signature

**Notes:**