

Specification



ZE8500V-2250

ZERES 5 Series: Electric with Integrated Hydraulics



Clamping Unit		ZE8500 V
Clamping Force	kN	8500
	US Tons	955
Mold Opening Stroke	mm	1200
	in.	47.24
Minimum Mold Height	mm	450
	in.	17.72
Maximum Mold Height	mm	1100
	in.	43.31
Maximum Daylight	mm	2300
	in.	90.55
Distance Between Tie-Bars (HXV)	mm	1160x1160
	in.	45.67x45.67
Platen Dimensions (HXV)	mm	1550x1550
	in.	61.02x61.02
Minimum Mold Size	mm	770x770
	in.	30.31x30.31
Ejector Stroke	mm	200
	in.	7.87
Ejector Force	kN	230
	US Tons	26

Specification



ZE8500V-2250

ZERES 5 Series: Electric with Integrated Hydraulics

Injection Unit		2250		
Screw & Barrel Designation		A	B	C
Screw Diameter	mm	65	70	80
	in.	2.56	2.76	3.15
Screw L/D Ratio	L/D	21.5	20	17.5
Injection Volume (Theoretical)	cm ³	1068	1239	1618
	cu.in.	65.17	75.61	98.74
Injection Weight (PS)	g	972	1127	1472
	oz.	34.29	39.75	51.92
Injection Pressure	MPa	210	180	138
	psi	30458	26107	20015
Holding Pressure	MPa	190	162	124
	psi	27557	23496	17985
Screw Speed	rpm	240	240	240
Plasticizing Rate (GPPS)	g/s	62	71	88
	oz./s	2.19	2.50	3.10
Nozzle Contact Force	kN	85	85	85
	US Tons	10	10	10
Injection Unit		2250		
Injection Speed	mm/s	160		
	in./s	6.3		
Injection Rate (PS)	g/s	463	537	702
	oz./s	16.33	18.94	24.76
Injection Unit		2250h		
Injection Speed	mm/s	250		
	in./s	9.84		
Injection Rate (PS)	g/s	723	839	1097
	oz./s	25.50	29.59	38.70

Specification



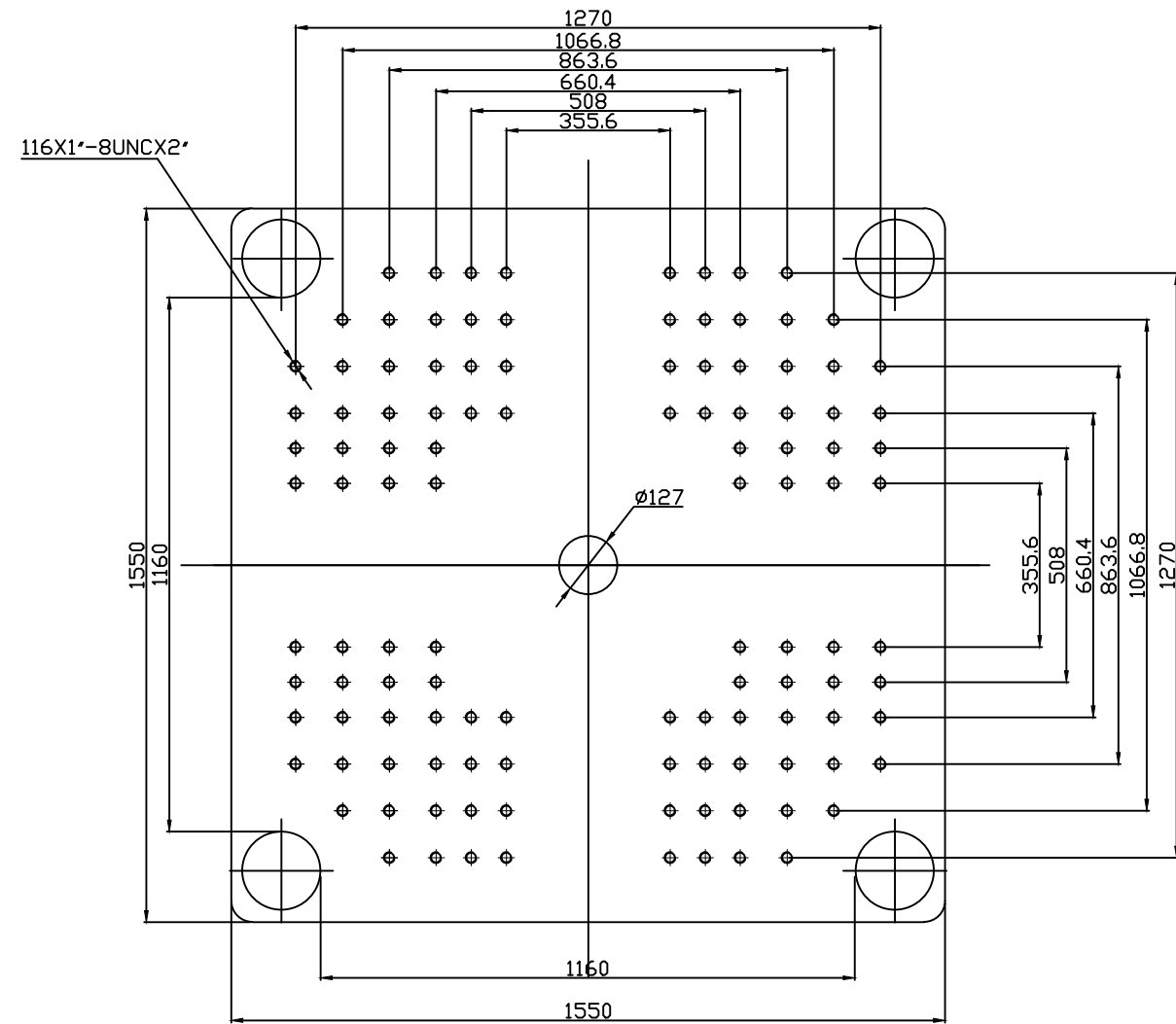
ZE8500V-2250

ZERES 5 Series: Electric with Integrated Hydraulics

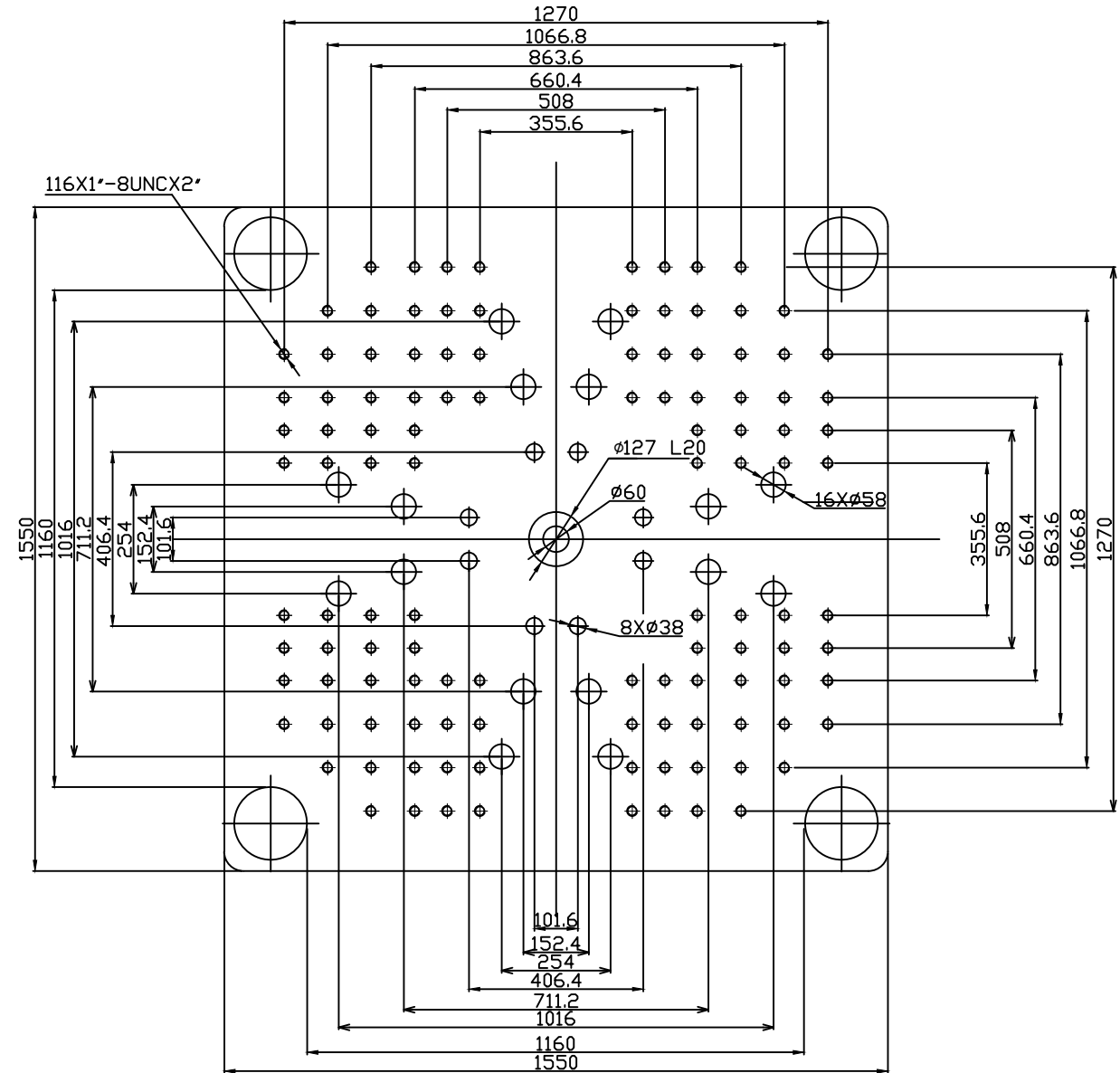
Other		
Connection Power	kW/A	2250:65/109 2250h:89/150
Heating Power	kW	36.1
Machine Dimension	m in.	11.17x2.49x2.67 440x98x105
Machine Weight	t lbs.	49.2 108467
Hopper Capacity	l gal	50 13
Oil Pressure	MPa psi	21 3046
Oil Flow	l/min gal/min	248 66
Oil Tank	l gal	411 109

***NOTE:**

1. Machine dimensions and weights are based on the international standard configuration and are for reference only. Any options or country specific requirements will affect this. Contact Absolute Haitian service department for machine specific information.
2. Power requirements are based on the international standard configuration and are for reference only. Any options or country specific requirements will affect this. Contact Absolute Haitian service department for machine specific information.



Fixed Platen



Moving Platen



Absolute Haitian Corporation
33 Southgate St. Worcester, MA
T:+1 508-792-4305
www.absolutehaitian.com

Title: ZE/VEV 8500 Fixed & Moving Platens Drawing

Machine Model: ZE/VEV 8500
Machine Serial Number:
Machine Tonnage:

Sheet: 1 of 1

Drawn By: Harry Date: 1/9/2024
Chkd By: LEON XIE Date: 1/9/2024

Revision	Date:	Drawing #:	NOT TO SCALE	Size: 11 X 17 "B"
Rev #: 1				Units: mm / [in]
Rev #: 2				Material:
Rev #: 3				Part:
Rev #: 4				Part:
Rev #: 5				Part:

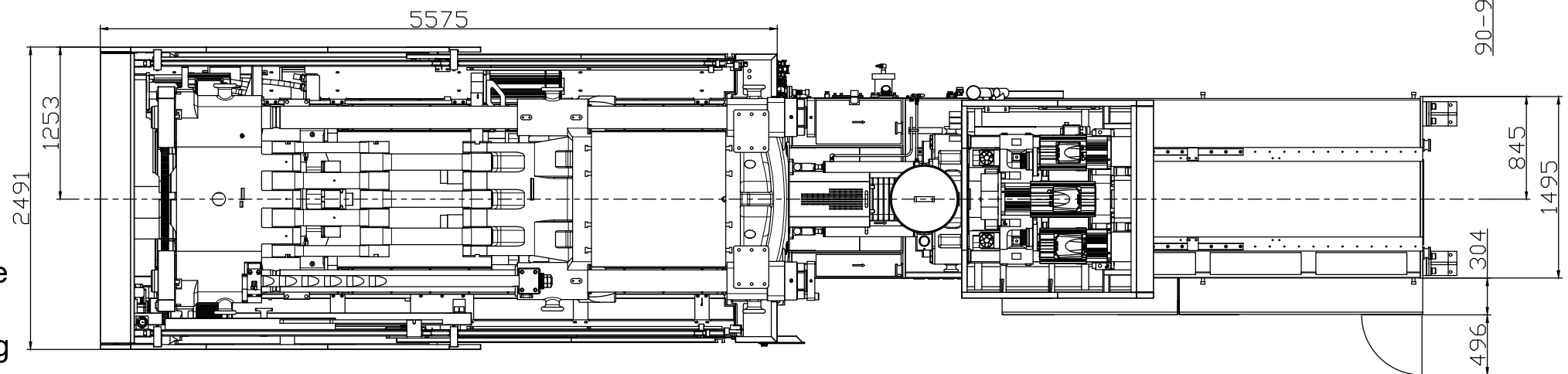
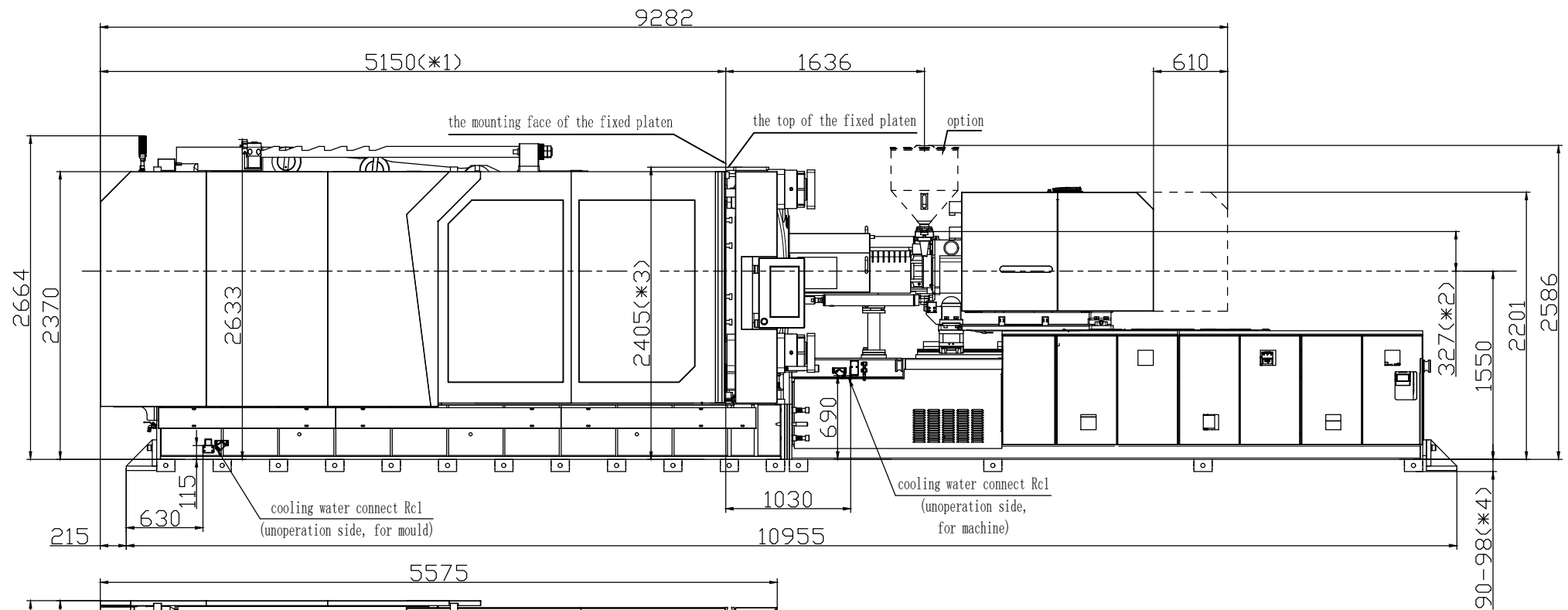
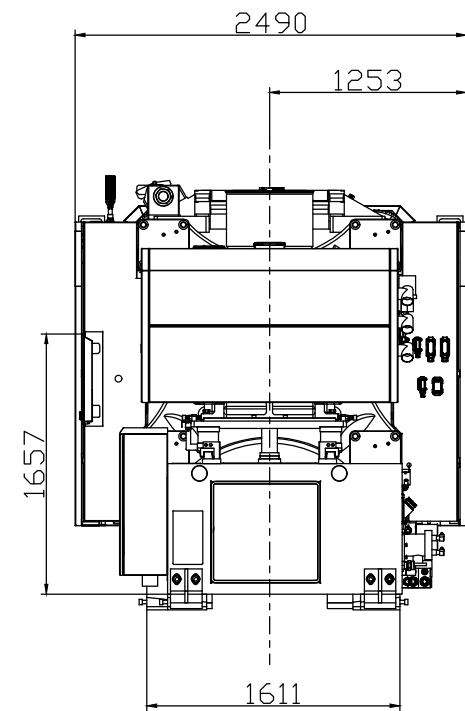
PLEASE READ:

The designs on this drawing were validated using machine manufacturer's drawings and/or information supplied by Absolute or the customer. It is the responsibility of the customer to review and confirm that all dimensions are consistent with the application intended and in accordance with the facility requirements for space, part clearance, overhead clearance, or any other interference. By signing this document, the customer accepts full responsibility for this design and application.

Customer:

Customer Approval:
Authorized Signature

Notes:



- *1 To the mounting face of the fixed platen
- *2 To the face of Hopper fixing platform
- *3 To the top of the fixed platen
- *4 Vibration dumping support



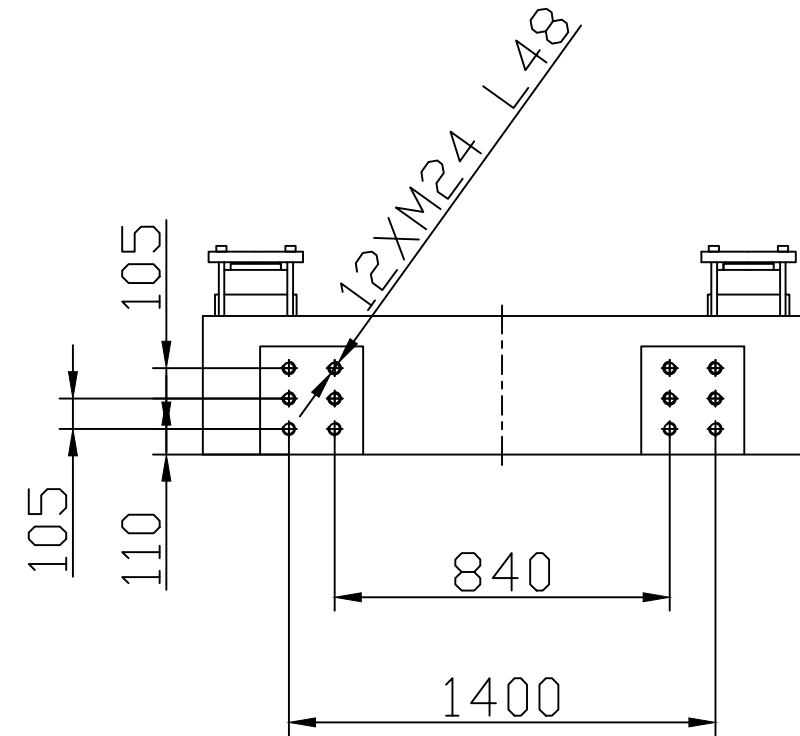
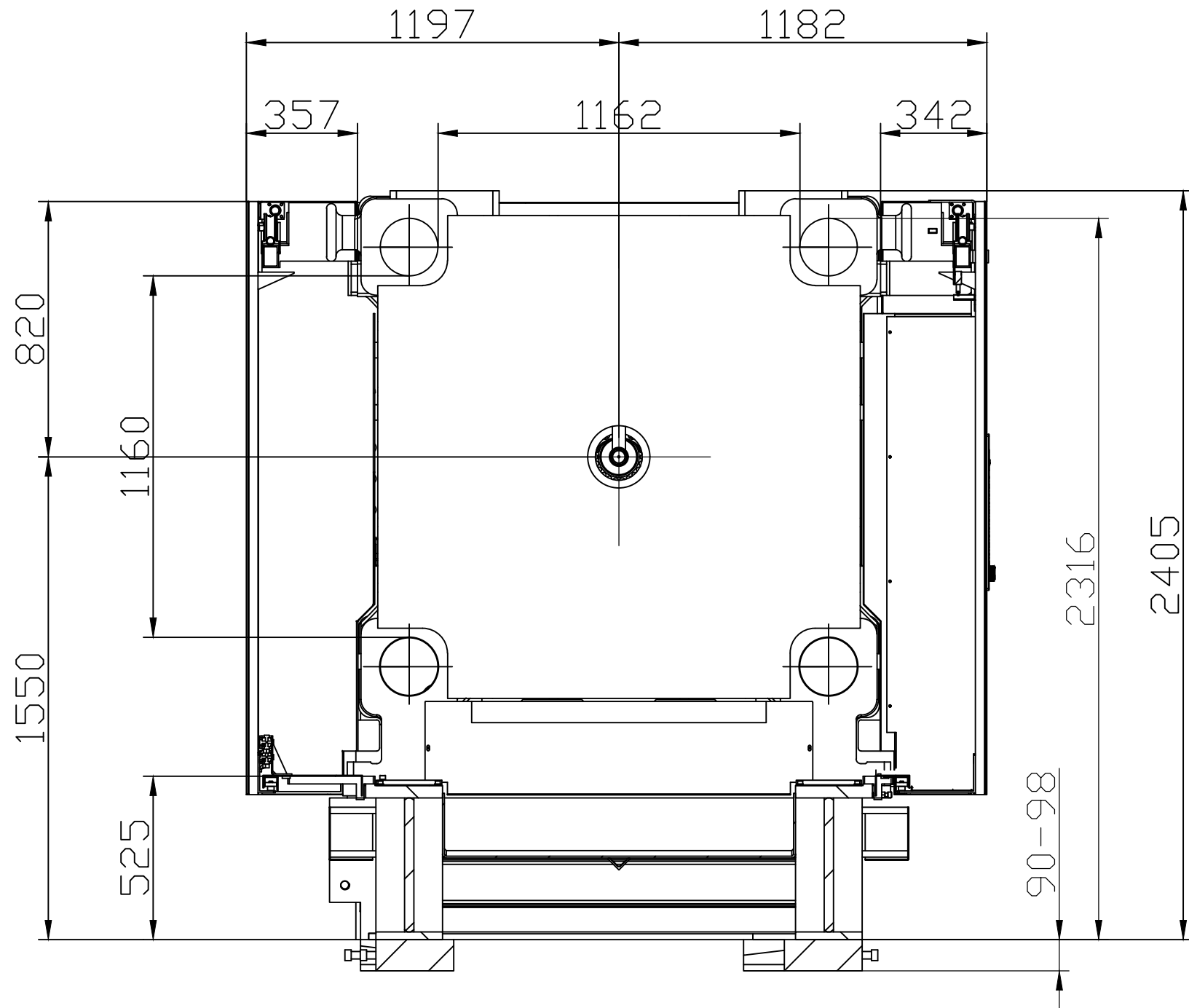
Absolute Haitian Corporation
33 Southgate St. Worcester, MA
T:+1 508-792-4305
www.absolutehaitian.com

Title: ZE V 8500-2250 Layout Drawing			Sheet: 1 of 1	
Machine Model: ZE V 8500-2250			Drawn By: Harry	Date: 3/22/2024
Machine Serial Number:			Chkd By: LEON XIE	Date: 3/22/2024
Machine Tonnage:			NOT TO SCALE	Size: 11 X 17 "B"
Revision	Date:	Drawing #: Layout	Units: mm / [in]	
Rev #: 1			Material:	
Rev #: 2			Part:	
Rev #: 3			Part:	
Rev #: 4			Part:	
Rev #: 5			Part:	

PLEASE READ:
The designs on this drawing were validated using machine manufacturer's drawings and/or information supplied by Absolute or the customer. It is the responsibility of the customer to review and confirm that all dimensions are consistent with the application intended and in accordance with the facility requirements for space, part clearance, overhead clearance, or any other interference. By signing this document, the customer accepts full responsibility for this design and application.

Customer: _____ Customer Approval: _____
Authorized Signature

Notes:



Absolute Haitian Corporation
 33 Southgate St. Worcester, MA
 T:+1 508-792-4305
 www.absolutehaitian.com

Title: ZE V 8500 Robot Mounting Drawing			
Machine Model: ZE V 8500		Sheet: 1 of 1	
Machine Serial Number:		Drawn By: Harry	Date: 4/9/2024
Machine Tonnage:		Chkd By: LEON XIE	Date: 4/9/2024
Revision	Date:	Drawing #: Robot Mounting	NOT TO SCALE
Rev #: 1			Size: 11 X 17 "B"
Rev #: 2			Units: mm / [in]
Rev #: 3			Material:
Rev #: 4			Part:
Rev #: 5			Part:

PLEASE READ:
 The designs on this drawing were validated using machine manufacturer's drawings and/or information supplied by Absolute or the customer. It is the responsibility of the customer to review and confirm that all dimensions are consistent with the application intended and in accordance with the facility requirements for space, part clearance, overhead clearance, or any other interference. By signing this document, the customer accepts full responsibility for this design and application.

Customer: _____

Customer Approval:
 Authorized Signature

Notes: