

Specification



JU33000V-62500

JUPITER 5 Series: Two-Platen Servo-Hydraulic



Clamping Unit		JU33000V
Clamping Force	kN	33000
	US Tons	3709
Mold Opening Stroke (Min/Max)	mm	3200/2200
	in.	125.98/86.61
Minimum Mold Height	mm	1000
	in.	39.37
Maximum Mold Height	mm	2000
	in.	78.74
Maximum Daylight	mm	4200
	in.	165.35
Distance Between Tie-Bars (HXV)	mm	2270×1900
	in.	89.37×74.8
Platen Dimensions (HXV)	mm	3175×2805
	in.	125×110.43
Ejector Stroke	mm	550
	in.	21.65
Ejector Force	kN	580
	US Tons	65
Maximum Mold Weight*	t	75
	lbs.	165347

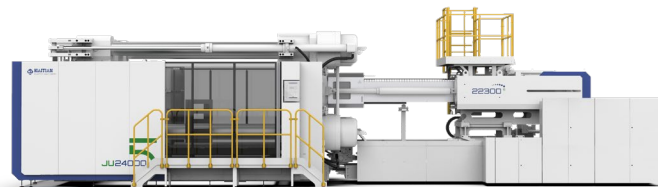
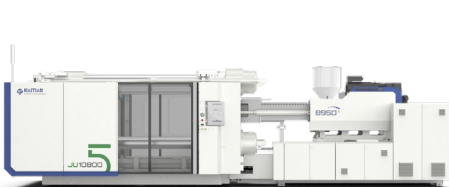
Specification



JU33000V-62500

JUPITER 5 Series: Two-Platen Servo-Hydraulic

Injection Unit		62500
Screw & Barrel Designation		B
Screw Diameter	mm	220
	in.	8.66
Screw L/D Ratio	L/D	20.5
Injection Volume (theoretical)	cm ³	45615
	cu.in.	2783.60
Injection Weight (PS)	g	41510
	oz.	1464.22
Injection Rate (PS)	g/s	2617
	oz./s	92.31
Injection Pressure	MPa	120
	psi	17405
Injection Pressure (max)*	MPa	135
	psi	19580
Plasticizing Rate (GPPS)	g/s	\
	oz./s	\
Plasticizing Rate (HDPE)	g/s	370
	oz./s	13.05
Screw Speed	rpm	53



Specification



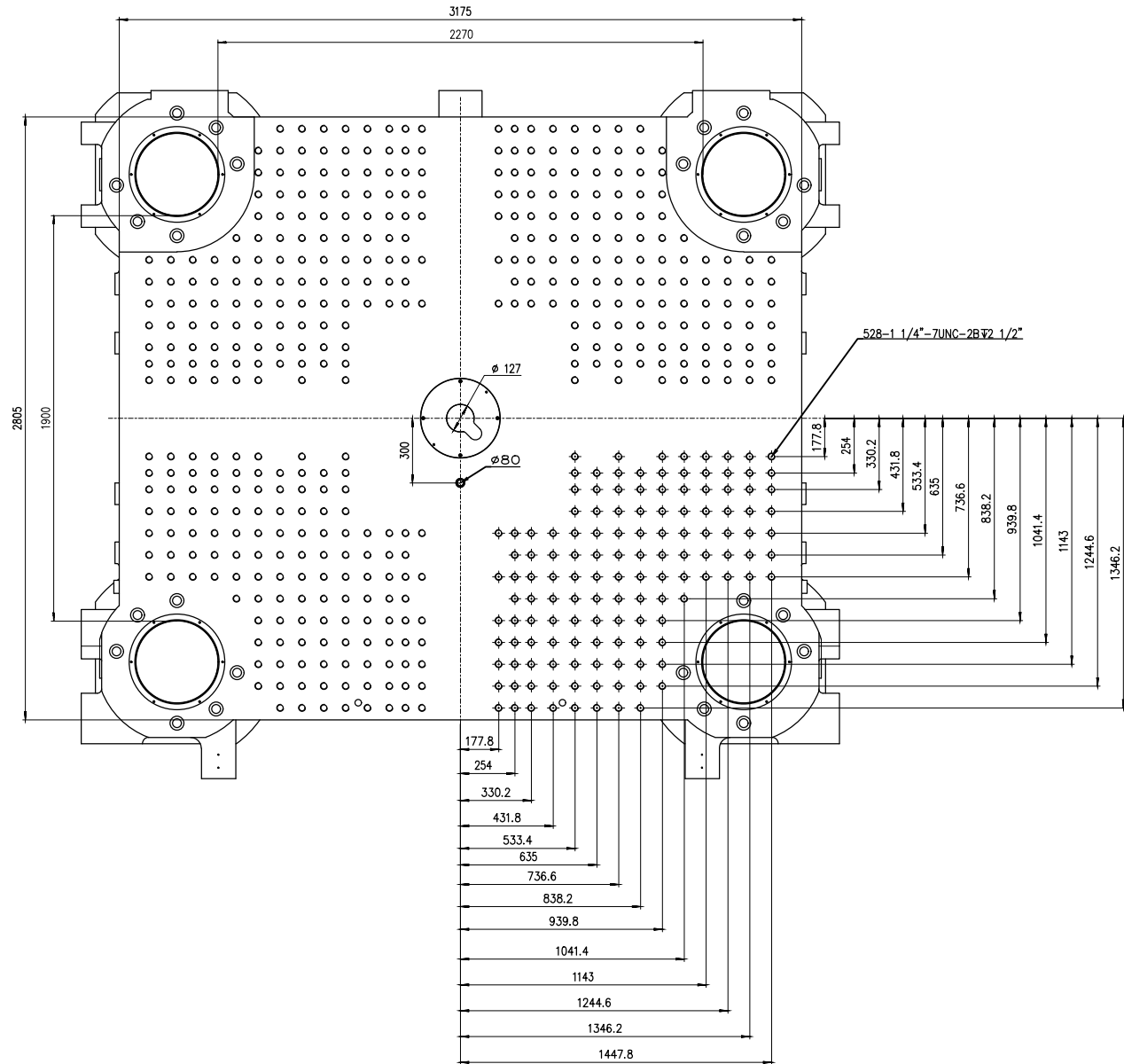
JU33000V-62500

JUPITER 5 Series: Two-Platen Servo-Hydraulic

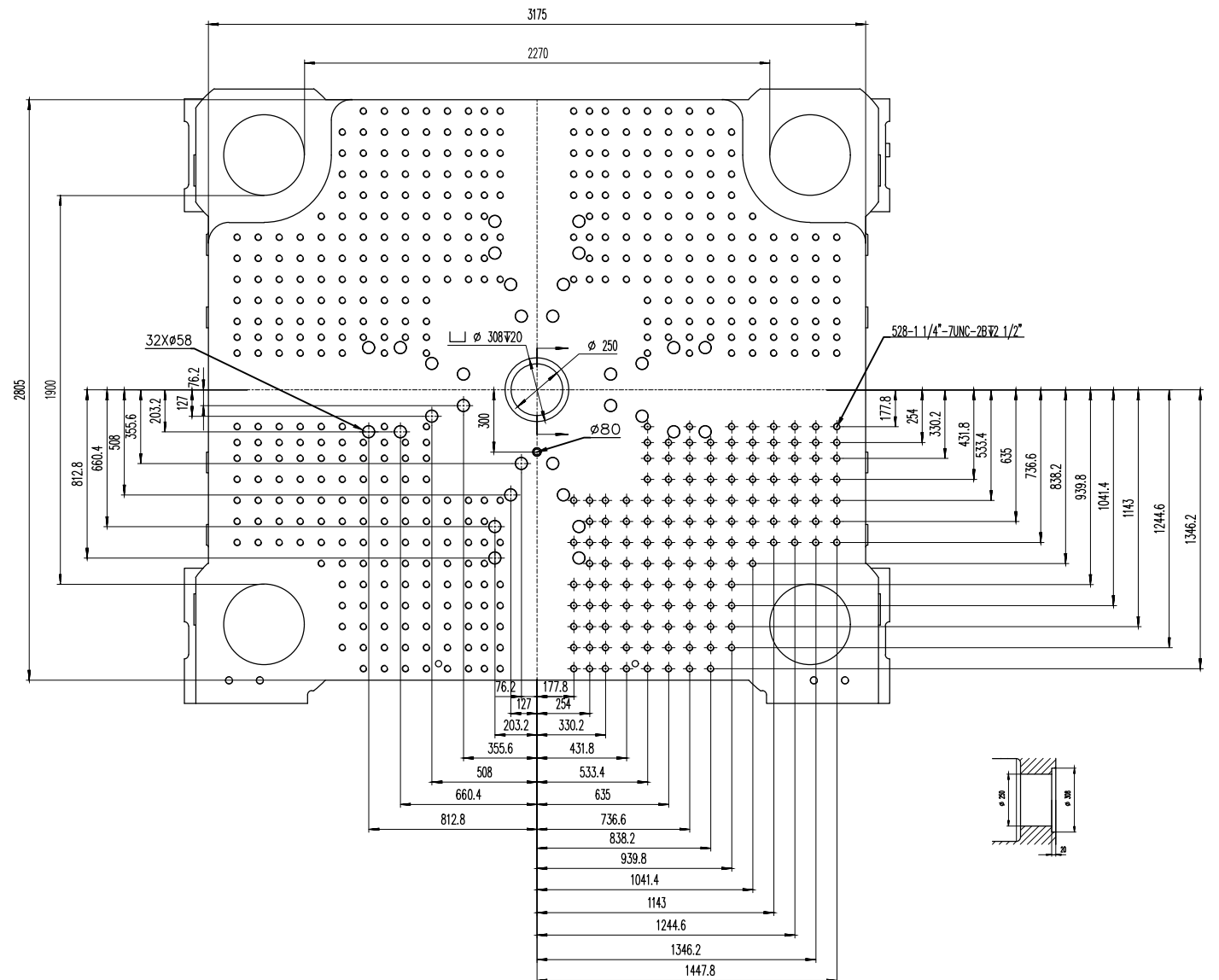
Other		
Pump Motor Power	kW	255
Heater Power	kW	228
Machine Dimension (LxWxH)	m	17.41×6.48×5.29
	in.	685×255×208
Machine Weight	t	183
	lbs.	403446
Hopper Capacity	kg	400
	lbs.	882
Oil Tank	l	2800
	gal	740

***NOTE:**

1. Injection Pressure (max) uses the machine's regeneration oil circuit to increase the injection pressure. This function will reduce injection control and repeatability. The standard "Injection Pressure" specification is the maximum injection pressure in a normal operating mode.
2. Moving platen max mold weight is 2/3 of total max mold weight.
3. Electric screw drive (screw rotate) is standard for injection units under 11500. For injection units 11500 and above electric screw drive is optional.
4. Machine dimensions and weights are based on the international standard configuration and are for reference only. Any options or country specific requirements will affect this. Contact Absolute Haitian service department for machine specific information.
5. Power requirements are based on the international standard configuration and are for reference only. Any options or country specific requirements will affect this. Contact Absolute Haitian service department for machine specific information.



Fixed Platen



Moving Platen



Absolute Haitian Corporation
33 Southgate St. Worcester, MA
T: +1 508-792-4305
www.absolutehaitian.com

Title: JUV 21000 Fixed & Moving Platens Drawing

Machine Model: JUV 21000
Machine Serial Number:
Machine Tonnage:

Sheet: 1 of 1

Drawn By: Harry Date: 1/9/2024
Chkd By: LEON XIE Date: 1/9/2024

Revision	Date:	Drawing #:	NOT TO SCALE	Size: 11 X 17 "B"
Rev #: 1				Units: mm / [in]
Rev #: 2				Material:
Rev #: 3				Part:
Rev #: 4				Part:
Rev #: 5				Part:

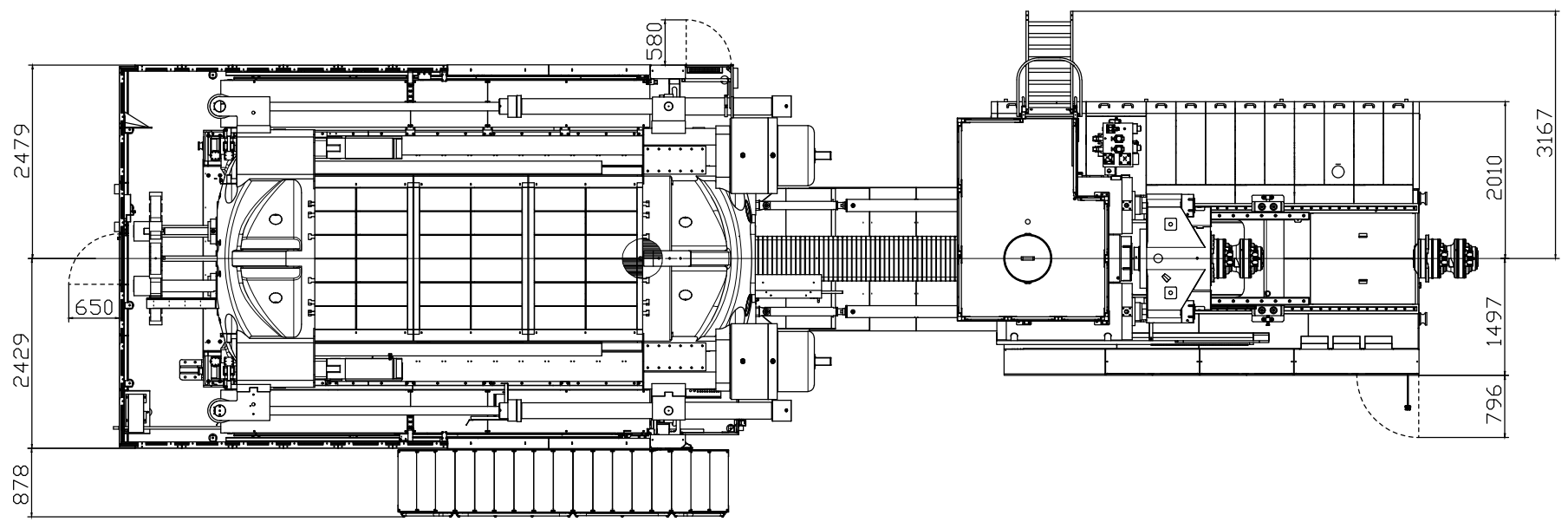
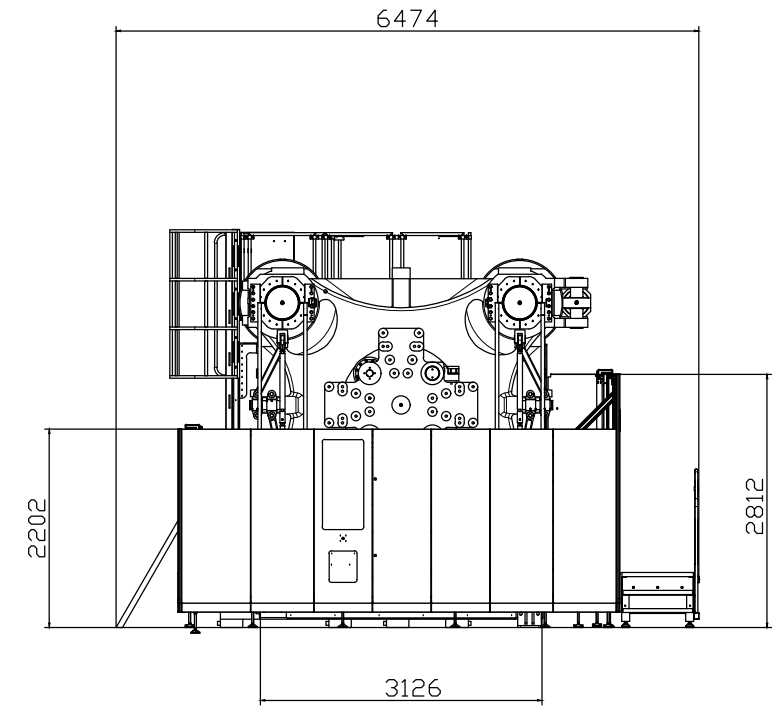
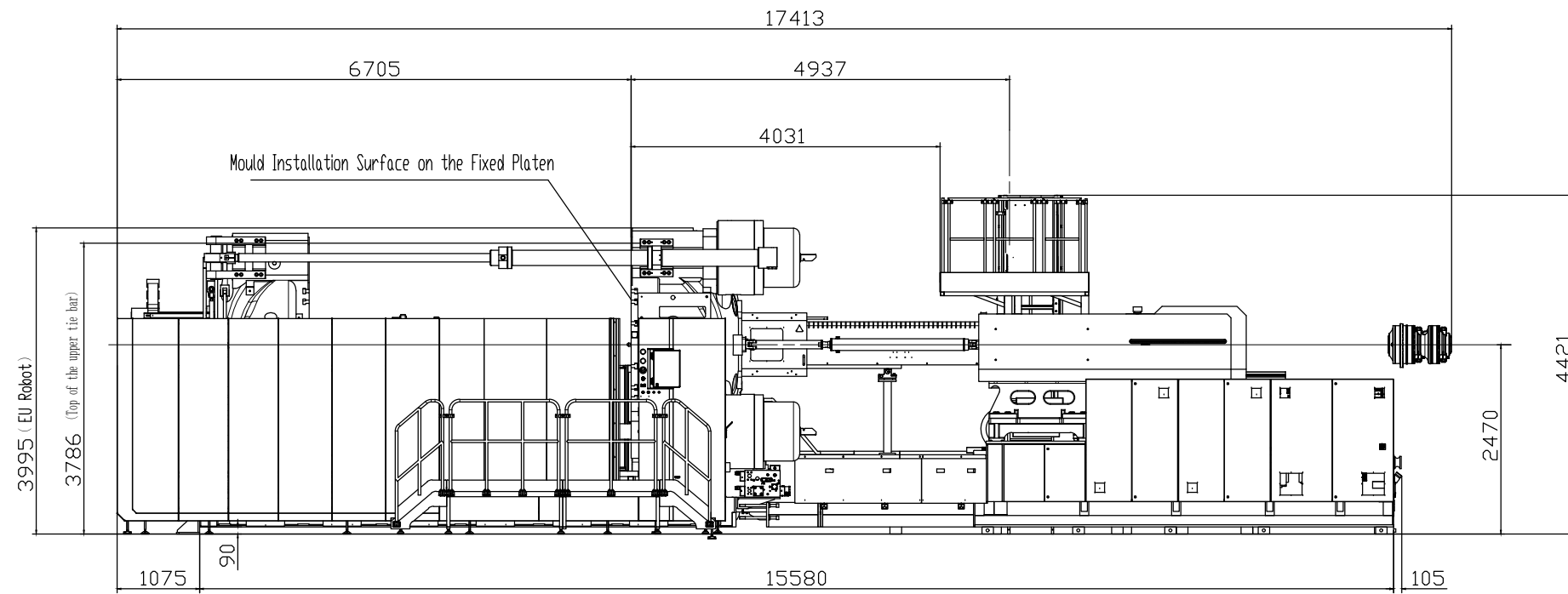
PLEASE READ:

The designs on this drawing were validated using machine manufacturer's drawings and/or information supplied by Absolute or the customer. It is the responsibility of the customer to review and confirm that all dimensions are consistent with the application intended and in accordance with the facility requirements for space, part clearance, overhead clearance, or any other interference. By signing this document, the customer accepts full responsibility for this design and application.

Customer:

Customer Approval:
Authorized Signature

Notes:



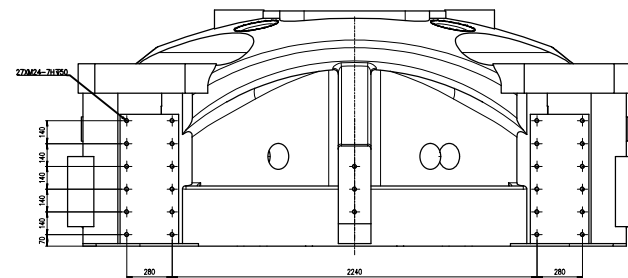
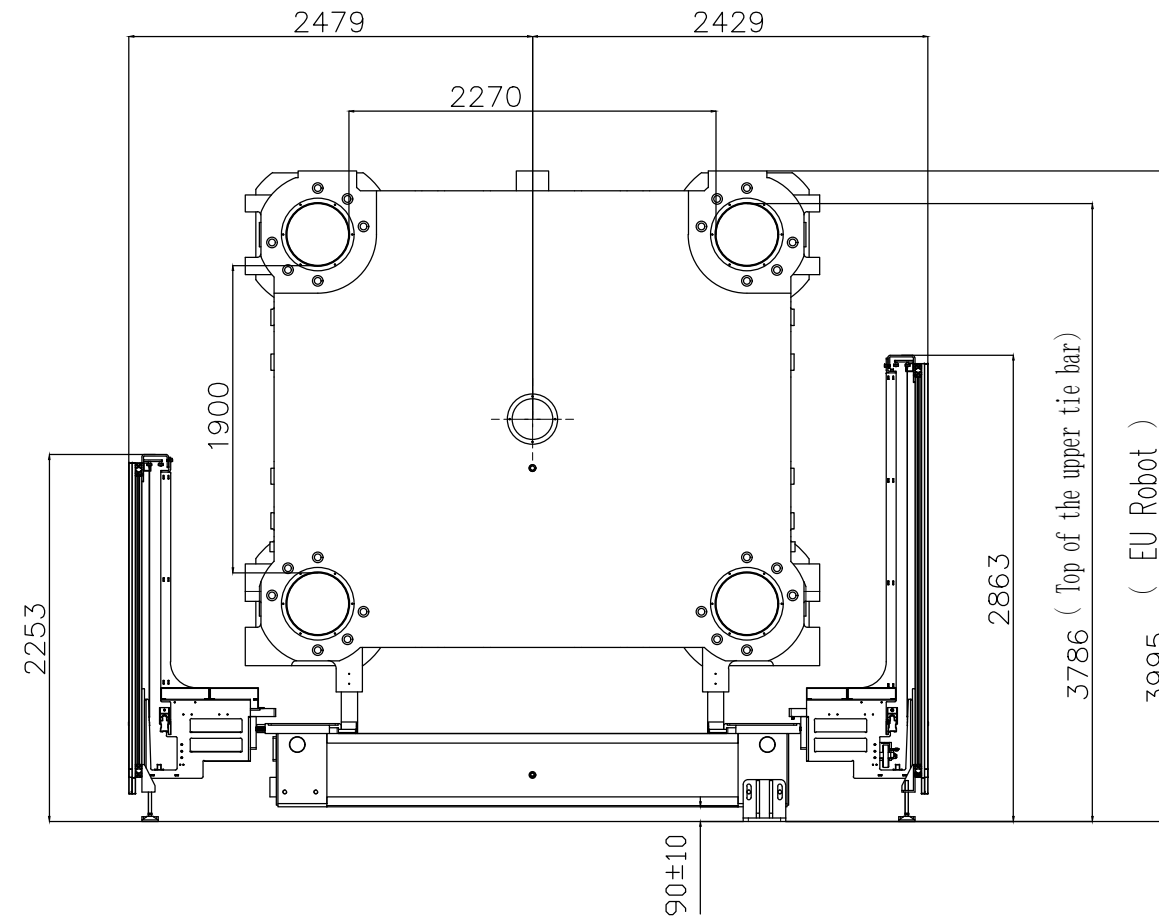
Absolute Haitian Corporation
 33 Southgate St. Worcester, MA
 T:+1 508-792-4305
 www.absolutehaitian.com

Title: JU V 33000-62500 Layout Drawing			Sheet: 1 of 1	
Machine Model: JU V 33000-62500			Drawn By: Harry	Date: 3/21/2024
Machine Serial Number:			Chkd By: LEON XIE	Date: 3/21/2024
Machine Tonnage:			NOT TO SCALE	Size: 11 X 17 "B"
Revision	Date:	Drawing #: Layout	Units: mm / [in]	
Rev #: 1			Material:	
Rev #: 2			Part:	
Rev #: 3			Part:	
Rev #: 4			Part:	
Rev #: 5			Part:	

PLEASE READ:
 The designs on this drawing were validated using machine manufacturer's drawings and/or information supplied by Absolute or the customer. It is the responsibility of the customer to review and confirm that all dimensions are consistent with the application intended and in accordance with the facility requirements for space, part clearance, overhead clearance, or any other interference. By signing this document, the customer accepts full responsibility for this design and application.

Customer: _____ Customer Approval: _____
Authorized Signature

Notes:



Absolute Haitian Corporation
 33 Southgate St. Worcester, MA
 T:+1 508-792-4305
 www.absolutehaitian.com

Title: JU V 33000-62500 Robot Mounting Drawing

Machine Model: JU V 33000-62500
 Machine Serial Number:
 Machine Tonnage:

Sheet: 1 of 1

Drawn By: Harry Date: 4/9/2024
 Chkd By: LEON XIE Date: 4/9/2024

Revision Date: Drawing #: Robot Mounting

Rev #: 1
 Rev #: 2
 Rev #: 3
 Rev #: 4
 Rev #: 5

NOT TO SCALE Size: 11 X 17 "B"

Units: mm / [in]
 Material:
 Part:
 Part:
 Part:
 Part:

PLEASE READ:

The designs on this drawing were validated using machine manufacturer's drawings and/or information supplied by Absolute or the customer. It is the responsibility of the customer to review and confirm that all dimensions are consistent with the application intended and in accordance with the facility requirements for space, part clearance, overhead clearance, or any other interference. By signing this document, the customer accepts full responsibility for this design and application.

Customer:

Customer Approval:
 Authorized Signature

Notes: