

# Specification



## ZE400V-50

ZERES 5 Series: Electric with Integrated Hydraulics



Clamping Unit		ZE400 V
Clamping Force	kN	400
	US Tons	45
Mold Opening Stroke	mm	235
	in.	9.25
Minimum Mold Height	mm	150
	in.	5.91
Maximum Mold Height	mm	320
	in.	12.6
Maximum Daylight	mm	555
	in.	21.85
Distance Between Tie-Bars (HXV)	mm	320x320
	in.	12.6x12.6
Platen Dimensions (HXV)	mm	440x440
	in.	17.32x17.32
Minimum Mold Size	mm	205x205
	in.	8.07x8.07
Ejector Stroke	mm	60
	in.	2.36
Ejector Force	kN	9.8
	US Tons	1

# Specification



## ZE400V-50

ZERES 5 Series: Electric with Integrated Hydraulics

INJECTION UNIT		50	
		A	B
Screw diameter	mm	16	19
	in.	0.63	0.75
Screw L/D ratio	L/D	21	20
Injection volume (theoretical)	cm <sup>3</sup>	12	17
	cu.in.	0.73	1.04
Injection weight (PS)	g	10.9	15.4
	oz.	0.38	0.54
Injection pressure	MPa	280	260
	psi	40611	37710
Holding pressure	MPa	234	198
	psi	33939	28717
Screw speed	rpm	400	400
Plasticizing rate (GPPS)	g/s	2.5	3.6
	oz./s	0.09	0.13
Nozzle contact force ZE	kN	26	26
	US Tons	3	3
Injection Unit		50	
Injection speed	mm/s	200	
	in./s	7.87	
Injection rate (PS)	g/s	35	49
	oz./s	1.23	1.73
Injection Unit		50h	
Injection speed	mm/s	350	
	in./s	13.78	
Injection rate (PS)	g/s	61	86
	oz./s	2.15	3.03
Injection Unit		50hs	
Injection speed	mm/s	500	
	in./s	19.69	
Injection rate (PS)	g/s	87	123
	oz./s	3.07	4.34

# Specification



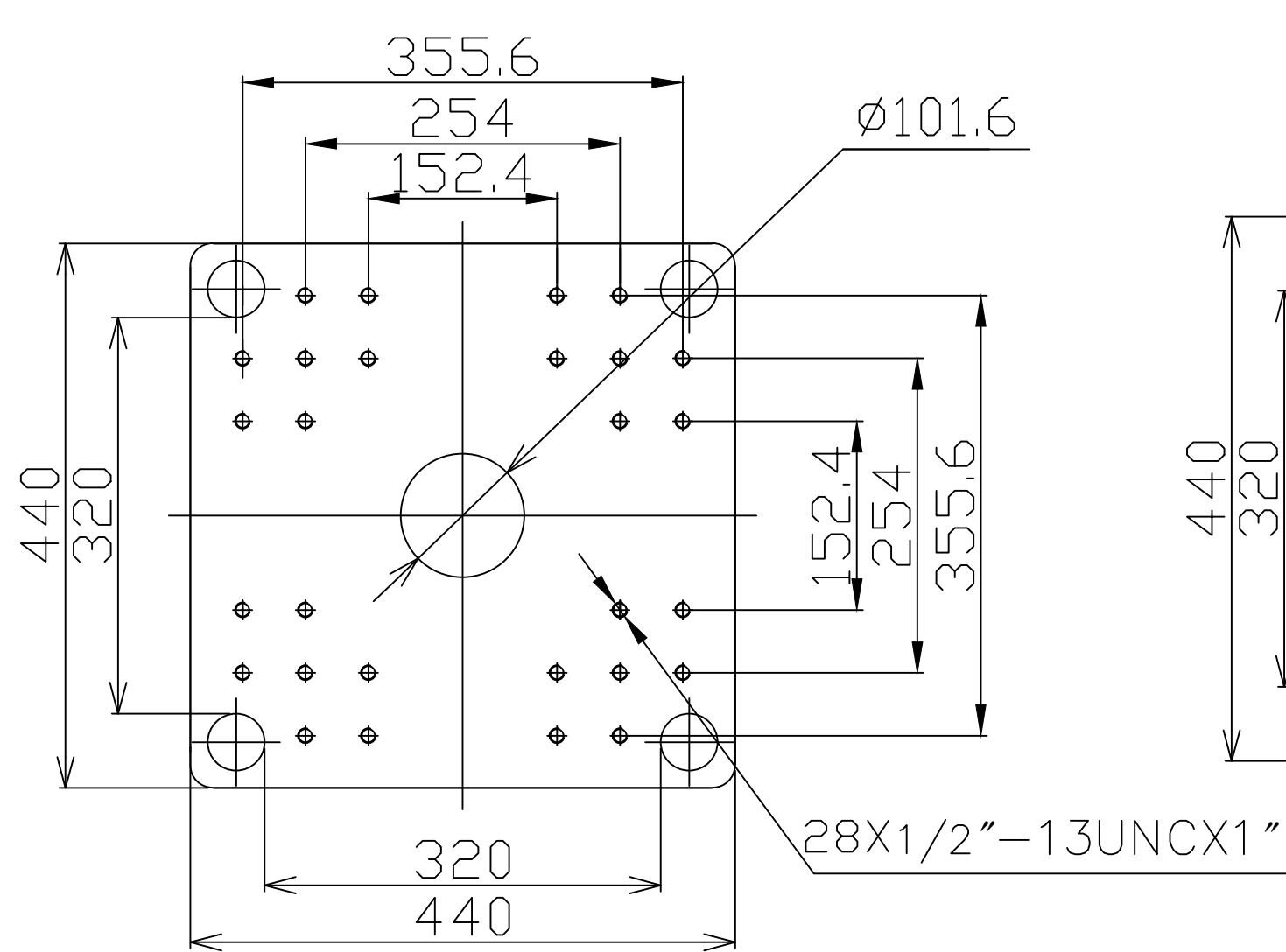
## ZE400V-50

ZERES 5 Series: Electric with Integrated Hydraulics

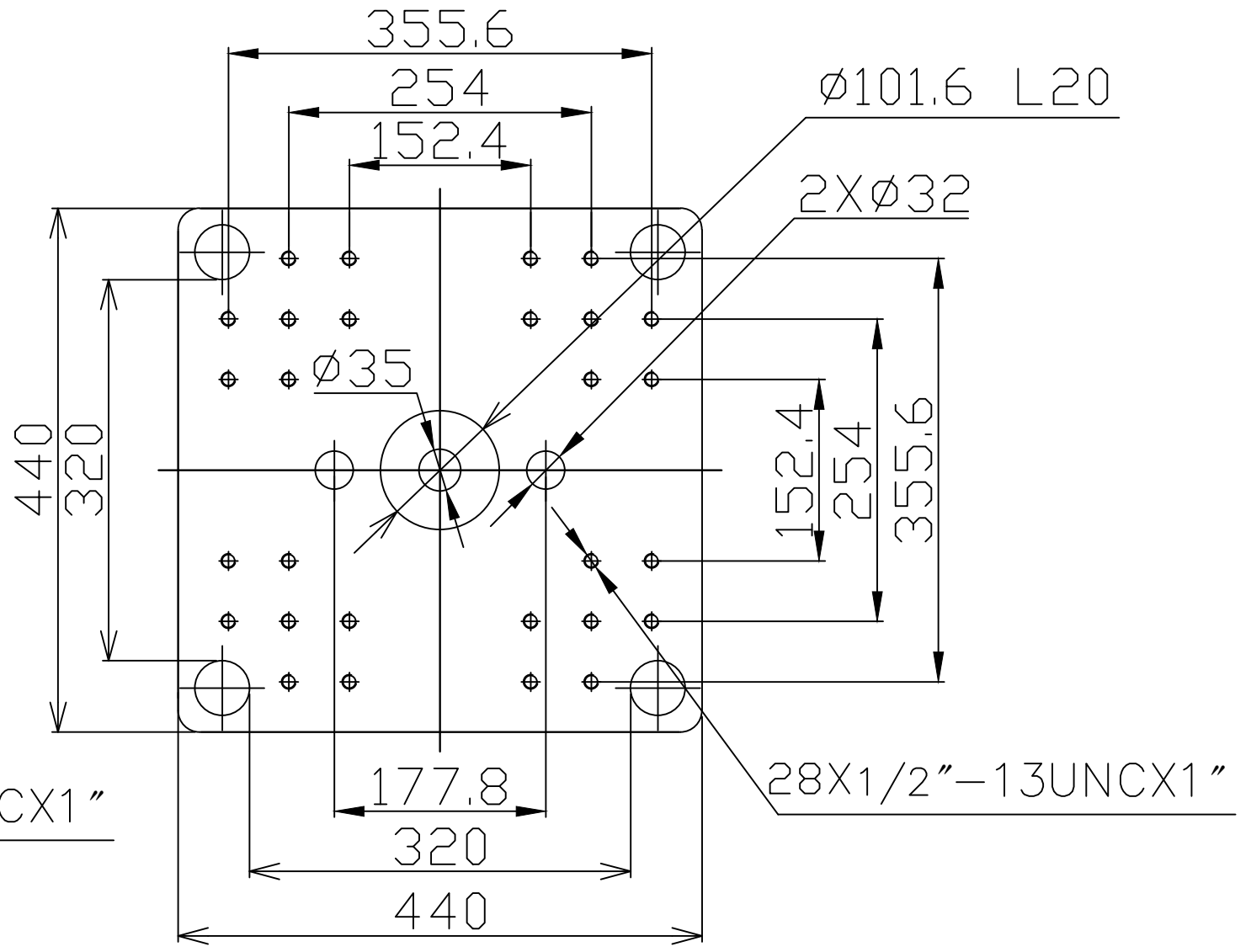
Other		
Connection power	kW/A	50:11/18 50h:11/18 50hs:16/27
Heating power	kW	4.3      4.6
Machine dimension	m	3.67x1.14x1.85
	in.	144x45x73
Machine Weight	t	2.62
	lbs.	5776
Hopper Capacity	l	15
	gal	4
Oil Pressure	MPa	17.5
	psi	2538
Oil Flow	l/min	24
	gal/min	6
Oil Tank Size	l	31
	gal	8

**\*NOTE:**

1. Machine dimensions and weights are based on the international standard configuration and are for reference only. Any options or country specific requirements will affect this. Contact Absolute Haitian service department for machine specific information.
2. Power requirements are based on the international standard configuration and are for reference only. Any options or country specific requirements will affect this. Contact Absolute Haitian service department for machine specific information.



Fixed Platen



Moving Platen



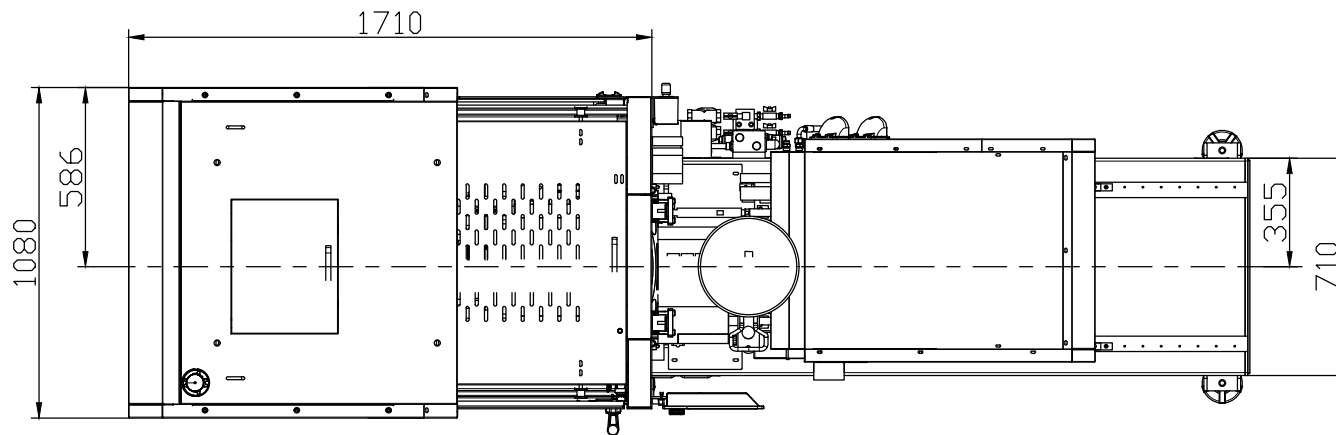
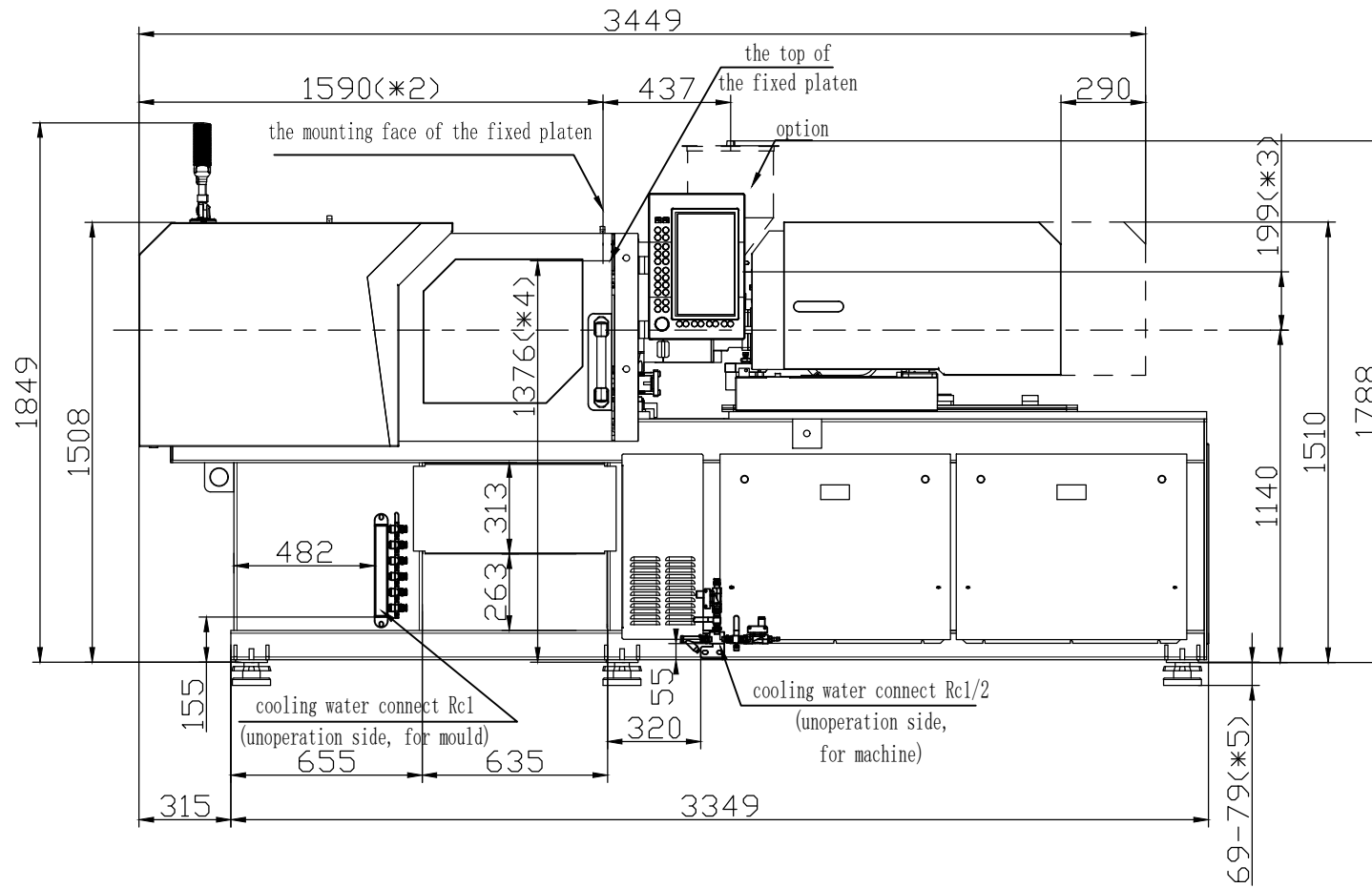
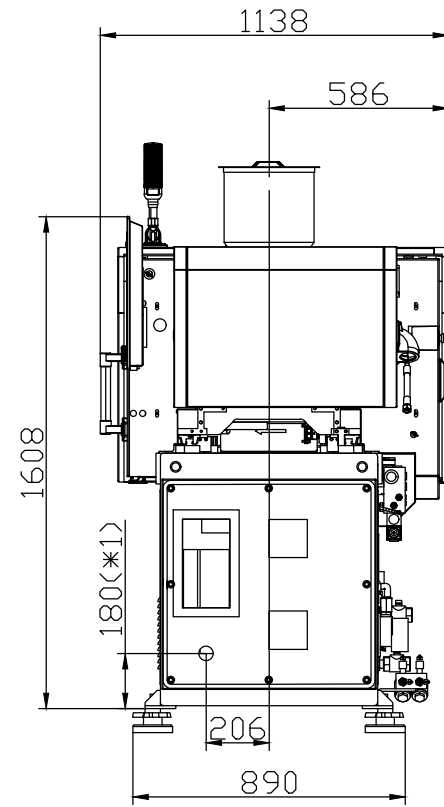
Absolute Haitian Corporation  
 33 Southgate St. Worcester, MA  
 T: +1 508-792-4305  
 www.absolutehaitian.com

Title: ZE/VEV 400 Fixed & Moving Platens Drawing			Sheet: 1 of 1	
Machine Model: ZE/VEV 400			Drawn By: Harry	Date: 1/9/2024
Machine Serial Number:			Chkd By: LEON XIE	Date: 1/9/2024
Machine Tonnage:			NOT TO SCALE	Size: 11 X 17 "B"
Revision	Date:	Drawing #:	Units: mm / [in]	
Rev #: 1			Material:	
Rev #: 2			Part:	
Rev #: 3			Part:	
Rev #: 4			Part:	
Rev #: 5			Part:	

PLEASE READ:  
 The designs on this drawing were validated using machine manufacturer's drawings and/or information supplied by Absolute or the customer. It is the responsibility of the customer to review and confirm that all dimensions are consistent with the application intended and in accordance with the facility requirements for space, part clearance, overhead clearance, or any other interference. By signing this document, the customer accepts full responsibility for this design and application.

Customer: \_\_\_\_\_ Customer Approval: \_\_\_\_\_  
Authorized Signature

Notes:



- \*1 Power in Current and Power Cable are shown in the Main Power Supply Circuit
- \*2 To the mounting face of the fixed platen
- \*3 To the face of Hopper fixing platform
- \*4 To the top of the fixed platen
- \*5 Vibration dumping support



Absolute Haitian Corporation  
 33 Southgate St. Worcester, MA  
 T:+1 508-792-4305  
 www.absolutehaitian.com

Title: ZE V 400-50 Layout Drawing

Machine Model: ZE V 400-50  
 Machine Serial Number:  
 Machine Tonnage:

Sheet: 1 of 1

Drawn By: Harry Date: 3/22/2024  
 Chkd By: LEON XIE Date: 3/22/2024

Revision Date: Drawing #: Layout

Rev #:	Date:	Drawing #:	Layout
Rev #: 1			
Rev #: 2			
Rev #: 3			
Rev #: 4			
Rev #: 5			

NOT TO SCALE Size: 11 X 17 "B"  
 Units: mm / [in]  
 Material:  
 Part:  
 Part:  
 Part:  
 Part:  
 Part:

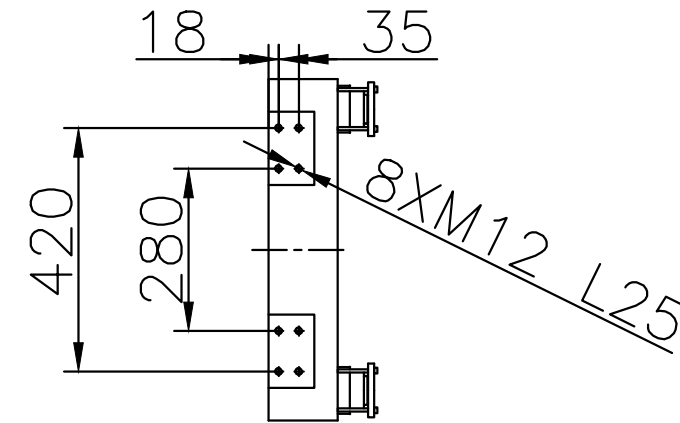
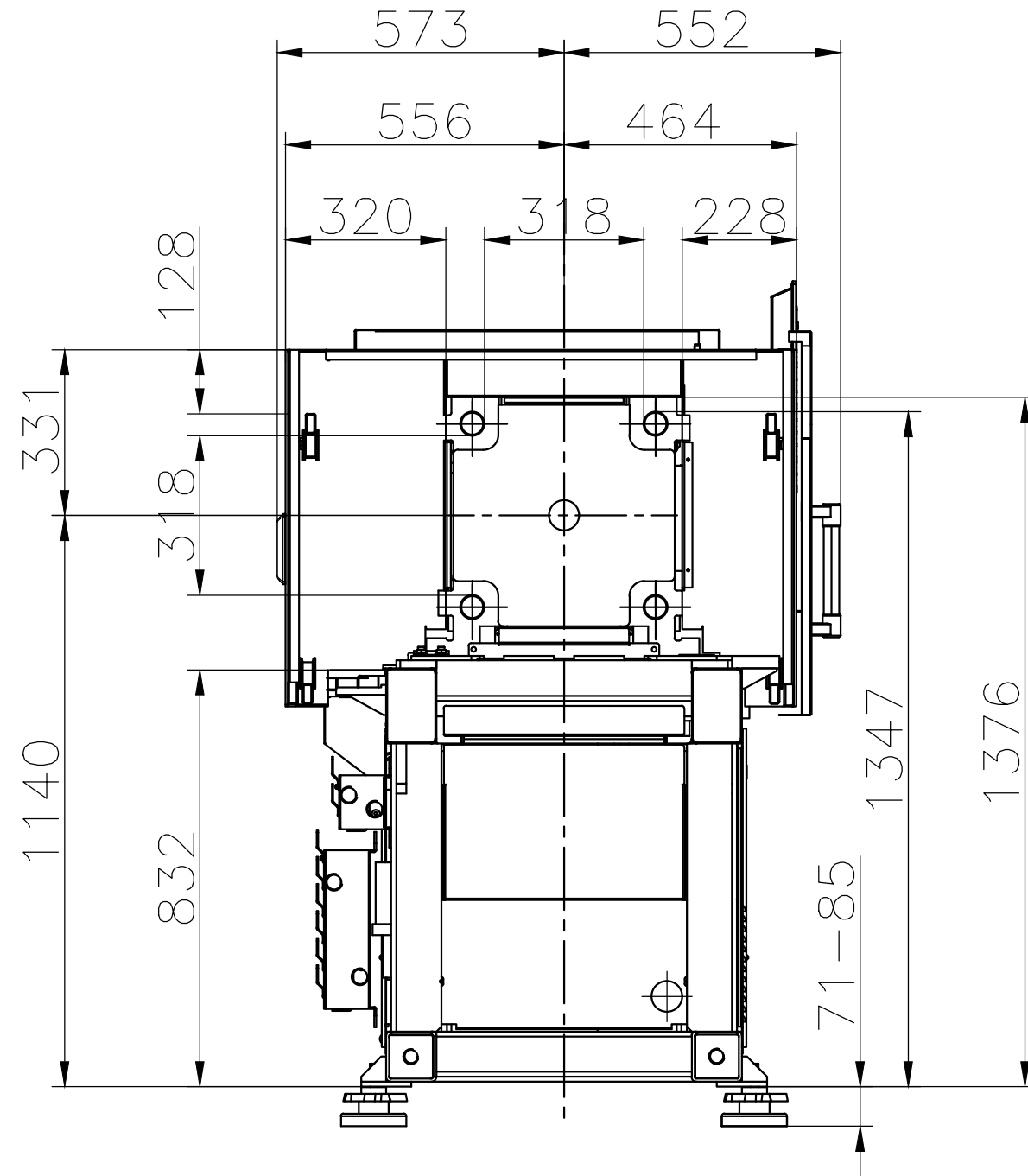
PLEASE READ:

The designs on this drawing were validated using machine manufacturer's drawings and/or information supplied by Absolute or the customer. It is the responsibility of the customer to review and confirm that all dimensions are consistent with the application intended and in accordance with the facility requirements for space, part clearance, overhead clearance, or any other interference. By signing this document, the customer accepts full responsibility for this design and application.

Customer:

Customer Approval:  
 Authorized Signature

Notes:



Absolute Haitian Corporation  
 33 Southgate St. Worcester, MA  
 T:+1 508-792-4305  
 www.absolutehaitian.com

Title: ZE V 400 Robot Mounting Drawing

Machine Model: MA III 12000-8400 B

Machine Serial Number:

Machine Tonnage:

Sheet: 1 of 1

Drawn By: Harry

Date: 4/9/2024

Chkd By: LEON XIE

Date: 4/9/2024

NOT TO SCALE

Size: 11 X 17 "B"

Revision Date: Drawing #: Robot Mounting

Rev #: 1

Rev #: 2

Rev #: 3

Rev #: 4

Rev #: 5

Units: mm / [in]

Material:

Part:

Part:

Part:

Part:

PLEASE READ:

The designs on this drawing were validated using machine manufacturer's drawings and/or information supplied by Absolute or the customer. It is the responsibility of the customer to review and confirm that all dimensions are consistent with the application intended and in accordance with the facility requirements for space, part clearance, overhead clearance, or any other interference. By signing this document, the customer accepts full responsibility for this design and application.

Customer:

Customer Approval:

Authorized Signature

Notes: