

# Specification



## JU33000V-40500

JUPITER 5 Series: Two-Platen Servo-Hydraulic



Clamping Unit		JU33000V
Clamping Force	kN	33000
	US Tons	3709
Mold Opening Stroke (Min/Max)	mm	3200/2200
	in.	125.98/86.61
Minimum Mold Height	mm	1000
	in.	39.37
Maximum Mold Height	mm	2000
	in.	78.74
Maximum Daylight	mm	4200
	in.	165.35
Distance Between Tie-Bars (HXV)	mm	2270×1900
	in.	89.37×74.8
Platen Dimensions (HXV)	mm	3175×2805
	in.	125×110.43
Ejector Stroke	mm	550
	in.	21.65
Ejector Force	kN	580
	US Tons	65
Maximum Mold Weight*	t	75
	lbs.	165347

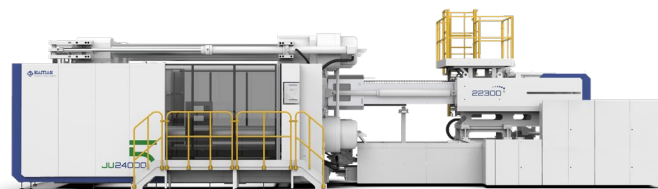
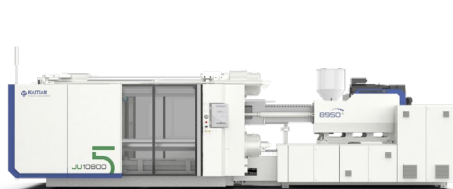
# Specification



## JU33000V-40500

JUPITER 5 Series: Two-Platen Servo-Hydraulic

Injection Unit		40500	
Screw & Barrel Designation		A	B
Screw Diameter	mm	170	185
	in.	6.69	7.28
Screw L/D Ratio	L/D	23.5	21.6
Injection Volume (theoretical)	cm <sup>3</sup>	23378	27686
	cu.in.	1426.61	1689.50
Injection Weight (PS)	g	21274	25194
	oz.	750.42	888.69
Injection Rate (PS)	g/s	1576	1867
	oz./s	55.59	65.86
Injection Pressure	MPa	159	134
	psi	23061	19435
Injection Pressure (max)*	MPa	179	151
	psi	25962	21901
Plasticizing Rate (GPPS)	g/s	\	\
	oz./s	\	\
Plasticizing Rate (HDPE)	g/s	309	320
	oz./s	10.90	11.29
Screw Speed	rpm	70	70



# Specification



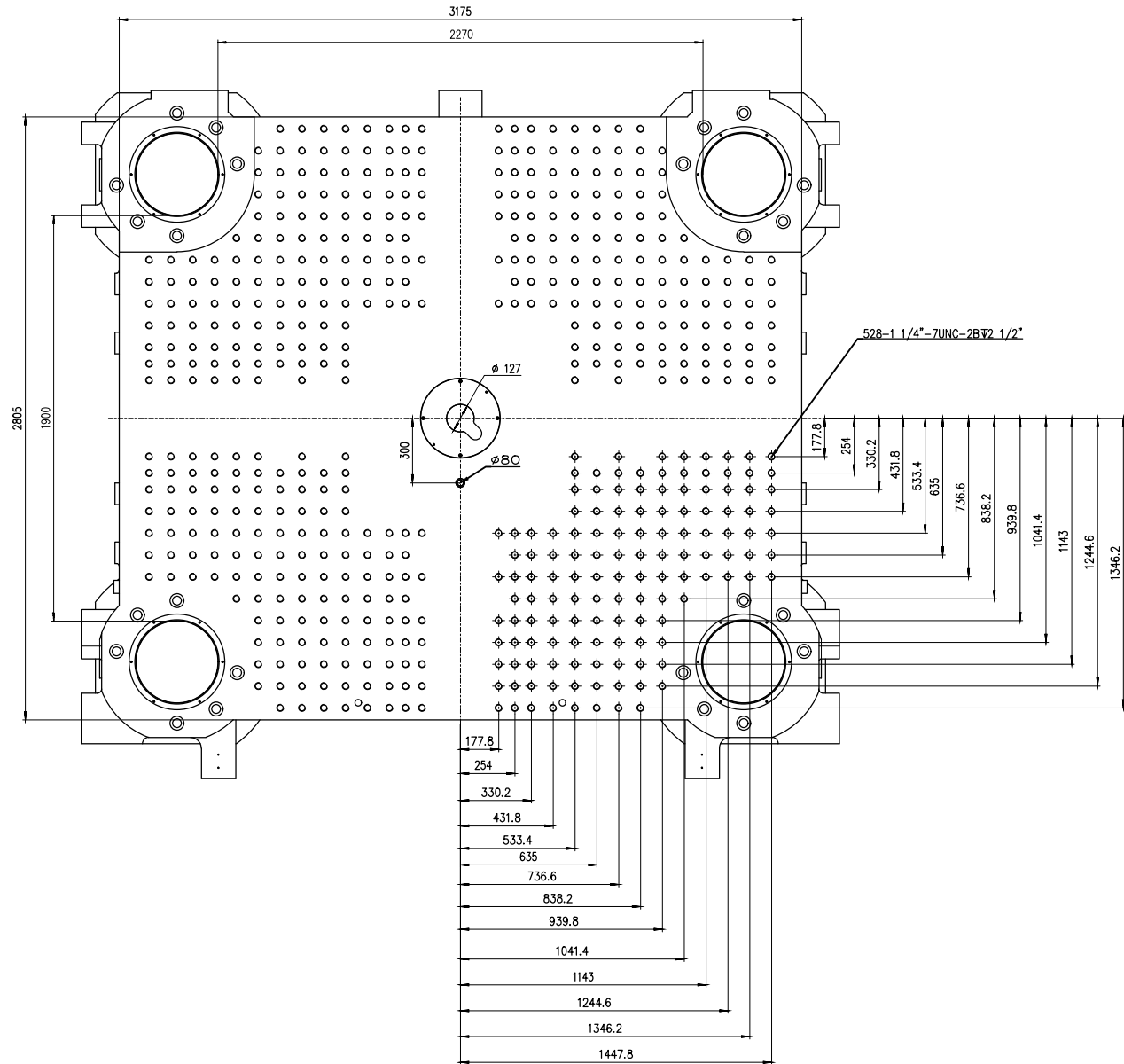
## JU33000V-40500

JUPITER 5 Series: Two-Platen Servo-Hydraulic

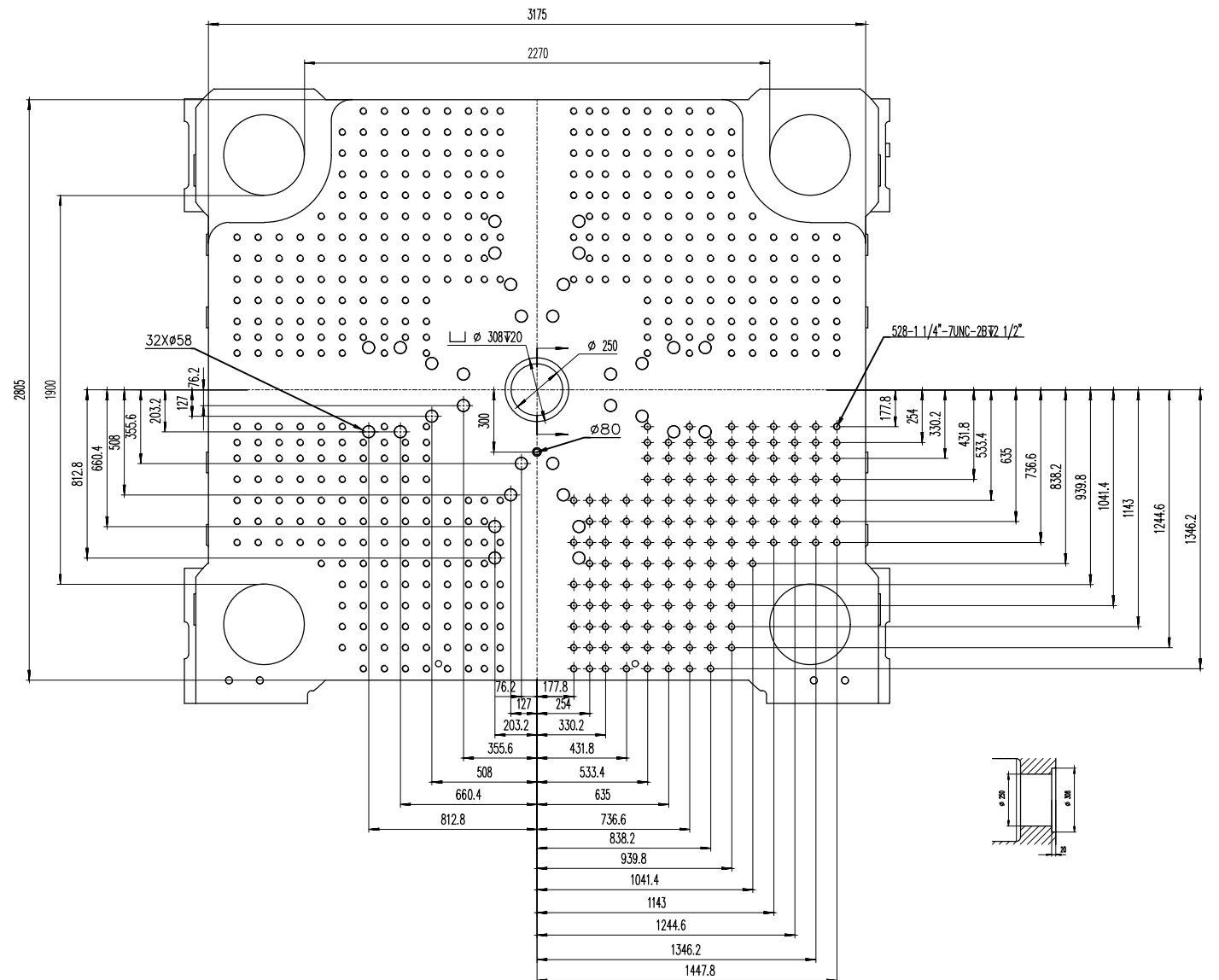
Other		
Pump Motor Power	kW	205
Heater Power	kW	211
Machine Dimension (LxWxH)	m	16.05×6.31×5.25
	in.	632×248×207
Machine Weight	t	174
	lbs.	383604
Hopper Capacity	kg	400
	lbs.	882
Oil Tank	l	1670
	gal	441

**\*NOTE:**

1. Injection Pressure (max) uses the machine's regeneration oil circuit to increase the injection pressure. This function will reduce injection control and repeatability. The standard "Injection Pressure" specification is the maximum injection pressure in a normal operating mode.
2. Moving platen max mold weight is 2/3 of total max mold weight.
3. Electric screw drive (screw rotate) is standard for injection units under 11500. For injection units 11500 and above electric screw drive is optional.
4. Machine dimensions and weights are based on the international standard configuration and are for reference only. Any options or country specific requirements will affect this. Contact Absolute Haitian service department for machine specific information.
5. Power requirements are based on the international standard configuration and are for reference only. Any options or country specific requirements will affect this. Contact Absolute Haitian service department for machine specific information.



Fixed Platen



Moving Platen



Absolute Haitian Corporation  
33 Southgate St. Worcester, MA  
T: +1 508-792-4305  
www.absolutehaitian.com

Title: JUV 21000 Fixed & Moving Platens Drawing

Machine Model: JUV 21000  
Machine Serial Number:  
Machine Tonnage:

Sheet: 1 of 1

Drawn By: Harry Date: 1/9/2024  
Chkd By: LEON XIE Date: 1/9/2024

Revision	Date:	Drawing #:	NOT TO SCALE	Size: 11 X 17 "B"
Rev #: 1				Units: mm / [in]
Rev #: 2				Material:
Rev #: 3				Part:
Rev #: 4				Part:
Rev #: 5				Part:

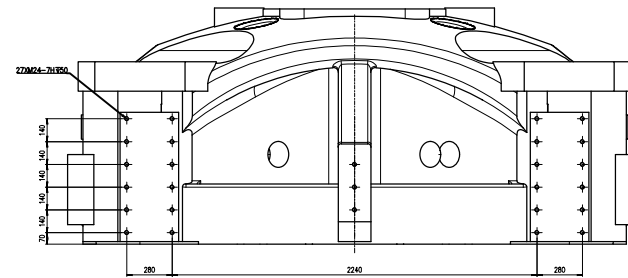
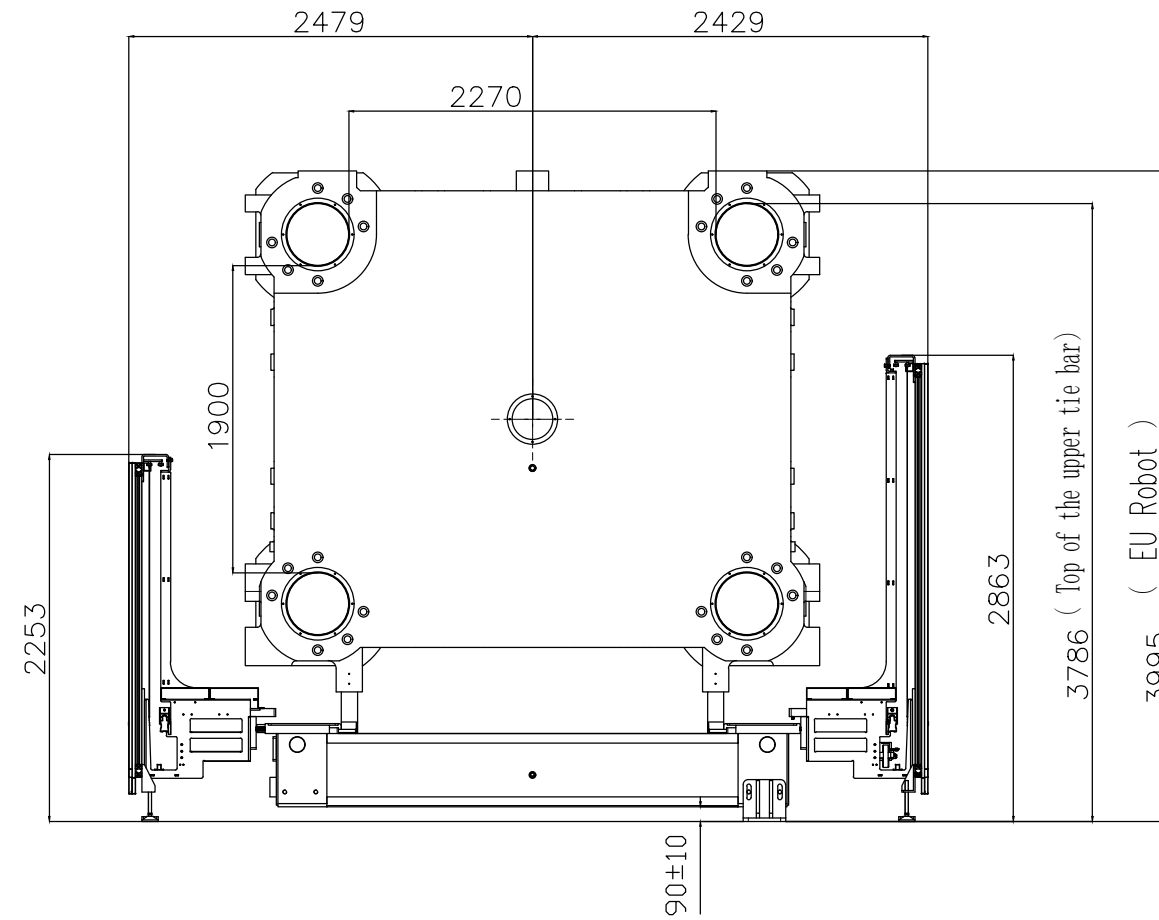
PLEASE READ:

The designs on this drawing were validated using machine manufacturer's drawings and/or information supplied by Absolute or the customer. It is the responsibility of the customer to review and confirm that all dimensions are consistent with the application intended and in accordance with the facility requirements for space, part clearance, overhead clearance, or any other interference. By signing this document, the customer accepts full responsibility for this design and application.

Customer:

Customer Approval:  
Authorized Signature

Notes:



Absolute Haitian Corporation  
 33 Southgate St. Worcester, MA  
 T:+1 508-792-4305  
 www.absolutehaitian.com

Title: JU V 33000-62500 Robot Mounting Drawing

Machine Model: JU V 33000-62500  
 Machine Serial Number:  
 Machine Tonnage:

Sheet: 1 of 1

Drawn By: Harry Date: 4/9/2024  
 Chkd By: LEON XIE Date: 4/9/2024

Revision Date: Drawing #: Robot Mounting

Rev #: 1  
 Rev #: 2  
 Rev #: 3  
 Rev #: 4  
 Rev #: 5

NOT TO SCALE Size: 11 X 17 "B"

Units: mm / [in]  
 Material:  
 Part:  
 Part:  
 Part:  
 Part:

PLEASE READ:

The designs on this drawing were validated using machine manufacturer's drawings and/or information supplied by Absolute or the customer. It is the responsibility of the customer to review and confirm that all dimensions are consistent with the application intended and in accordance with the facility requirements for space, part clearance, overhead clearance, or any other interference. By signing this document, the customer accepts full responsibility for this design and application.

Customer:

Customer Approval:  
 Authorized Signature

Notes: