

Specification



ZE900V-160

ZERES 5 Series: Electric with Integrated Hydraulics



Clamping Unit		ZE900 V
Clamping Force	kN	900
	US Tons	101
Mold Opening Stroke	mm	320
	in.	12.6
Minimum Mold Height	mm	150
	in.	5.91
Maximum Mold Height	mm	410
	in.	16.14
Maximum Daylight	mm	730
	in.	28.74
Distance Between Tie-Bars (HXV)	mm	420x420
	in.	16.54x16.54
Platen Dimensions (HXV)	mm	580x580
	in.	22.83x22.83
Minimum Mold Size	mm	270x270
	in.	10.63x10.63
Ejector Stroke	mm	80
	in.	3.15
Ejector Force	kN	24.5
	US Tons	3

Specification



ZE900V-160

ZERES 5 Series: Electric with Integrated Hydraulics

Injection Unit		160		
Screw & Barrel Designation		A	B	C
Screw Diameter	mm	26	28	30
	in.	1.02	1.10	1.18
Screw L/D Ratio	L/D	22	21	19
Injection Volume (Theoretical)	cm ³	58	67	77
	cu.in.	3.54	4.09	4.70
Injection Weight (PS)	g	52	61	70
	oz.	1.83	2.15	2.47
Injection Pressure	MPa	260	220	192
	psi	37710	31908	27847
Holding Pressure	MPa	160	138	120
	psi	23206	20015	17405
Screw Speed	rpm	400	400	400
Plasticizing Rate (GPPS)	g/s	8.8	11	13
	oz./s	0.31	0.39	0.46
Nozzle Contact Force	kN	26	26	26
	US Tons	3	3	3
Injection Unit		160		
Injection Speed	mm/s	200		
	in./s	7.87		
Injection Rate (PS)	g/s	92	107	123
	oz./s	3.25	3.77	4.34
Injection Unit		160h		
Injection Speed	mm/s	350		
	in./s	13.78		
Injection Rate (PS)	g/s	162	188	216
	oz./s	5.71	6.63	7.62
Injection Unit		160hs		
Injection Speed	mm/s	500		
	in./s	19.69		
Injection Rate (PS)	g/s	231	268	308
	oz./s	8.15	9.45	10.86

Specification



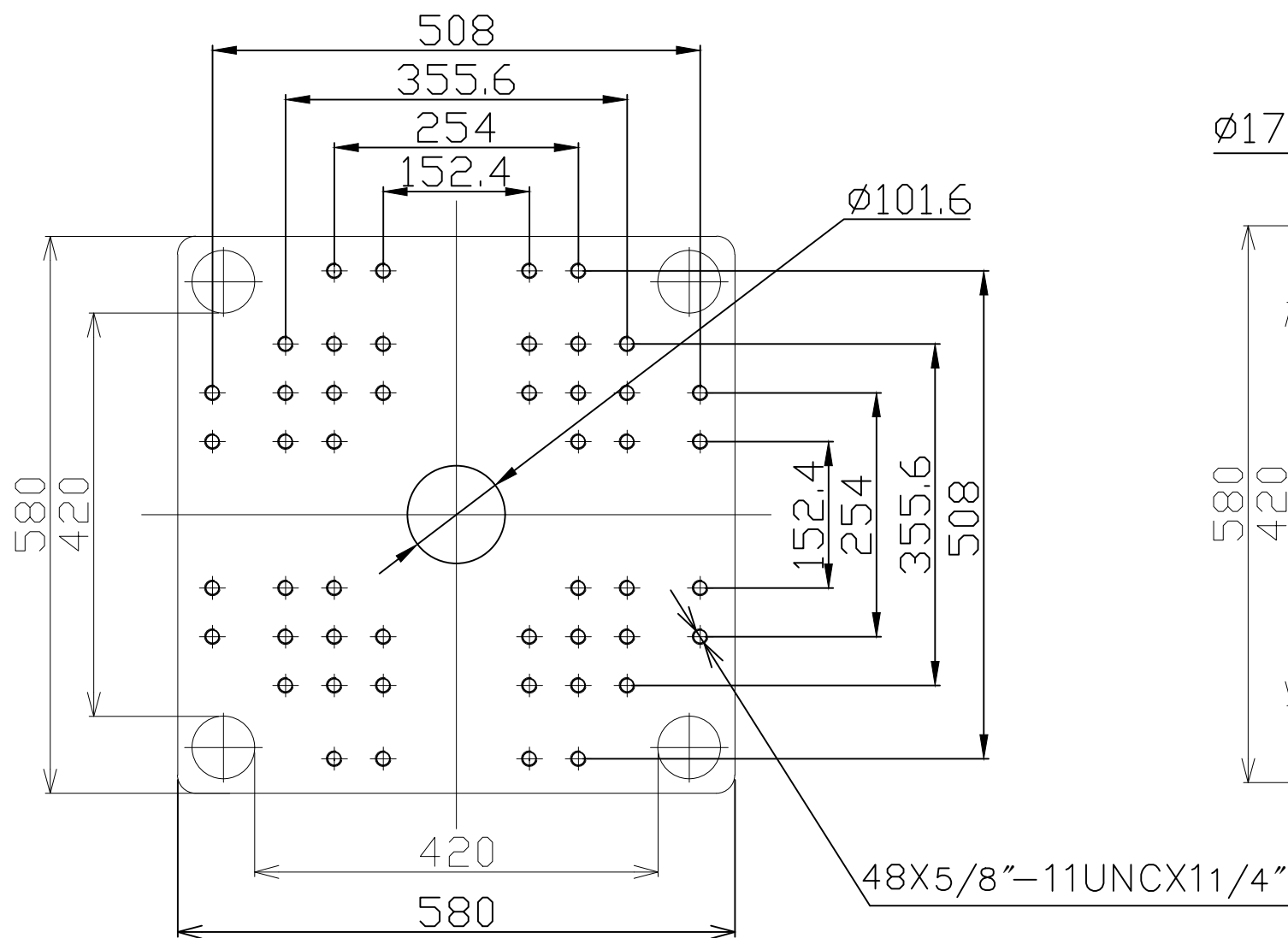
ZE900V-160

ZERES 5 Series: Electric with Integrated Hydraulics

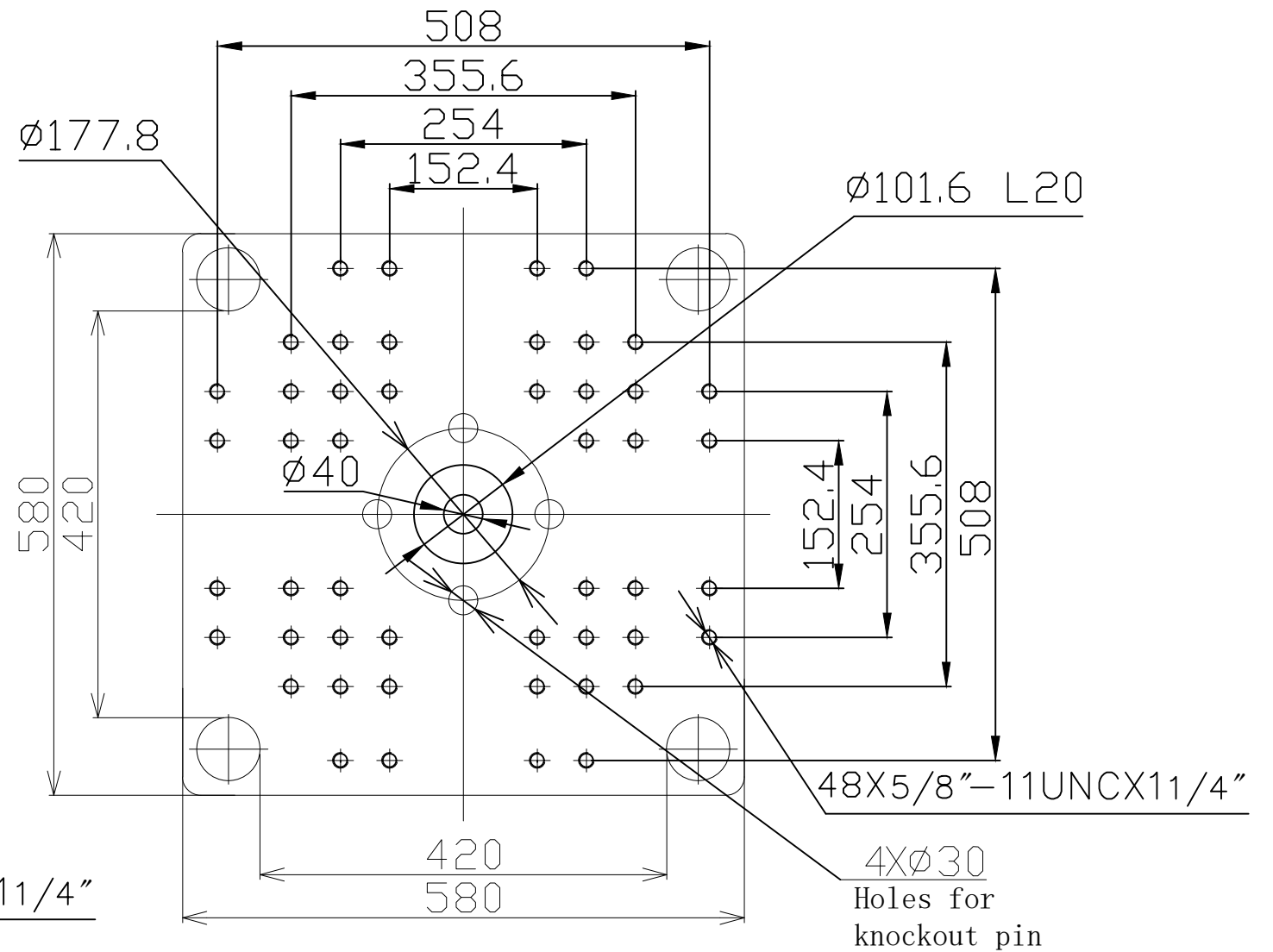
Other				
Connection Power	kW/A		160:14/24 160h:18/30 160hs:24/41	
Heating Power	kW	7.5	7.5	7.5
Machine Dimension	m in.		4.33x1.23x2.03 170x48x80	
Machine Weight	t lbs.		3.79 8356	
Hopper Capacity (OP)	l gal		15 4	
Oil Pressure	MPa psi		17.5 2538	
Oil Flow	l/min gal/min		35 9	
Oil Tank	l gal		47 12	

***NOTE:**

1. Machine dimensions and weights are based on the international standard configuration and are for reference only. Any options or country specific requirements will affect this. Contact Absolute Haitian service department for machine specific information.
2. Power requirements are based on the international standard configuration and are for reference only. Any options or country specific requirements will affect this. Contact Absolute Haitian service department for machine specific information.



Fixed Platen



Moving Platen



Absolute Haitian Corporation
33 Southgate St. Worcester, MA
T: +1 508-792-4305
www.absolutehaitian.com

Title: ZE/VEV 900 Fixed & Moving Platens Drawing

Machine Model: ZE/VEV 900
Machine Serial Number:
Machine Tonnage:

Sheet: 1 of 1

Drawn By: Harry Date: 1/9/2024
Chkd By: LEON XIE Date: 1/9/2024

Revision	Date:	Drawing #:	NOT TO SCALE	Size: 11 X 17 "B"
Rev #: 1				Units: mm / [in]
Rev #: 2				Material:
Rev #: 3				Part:
Rev #: 4				Part:
Rev #: 5				Part:

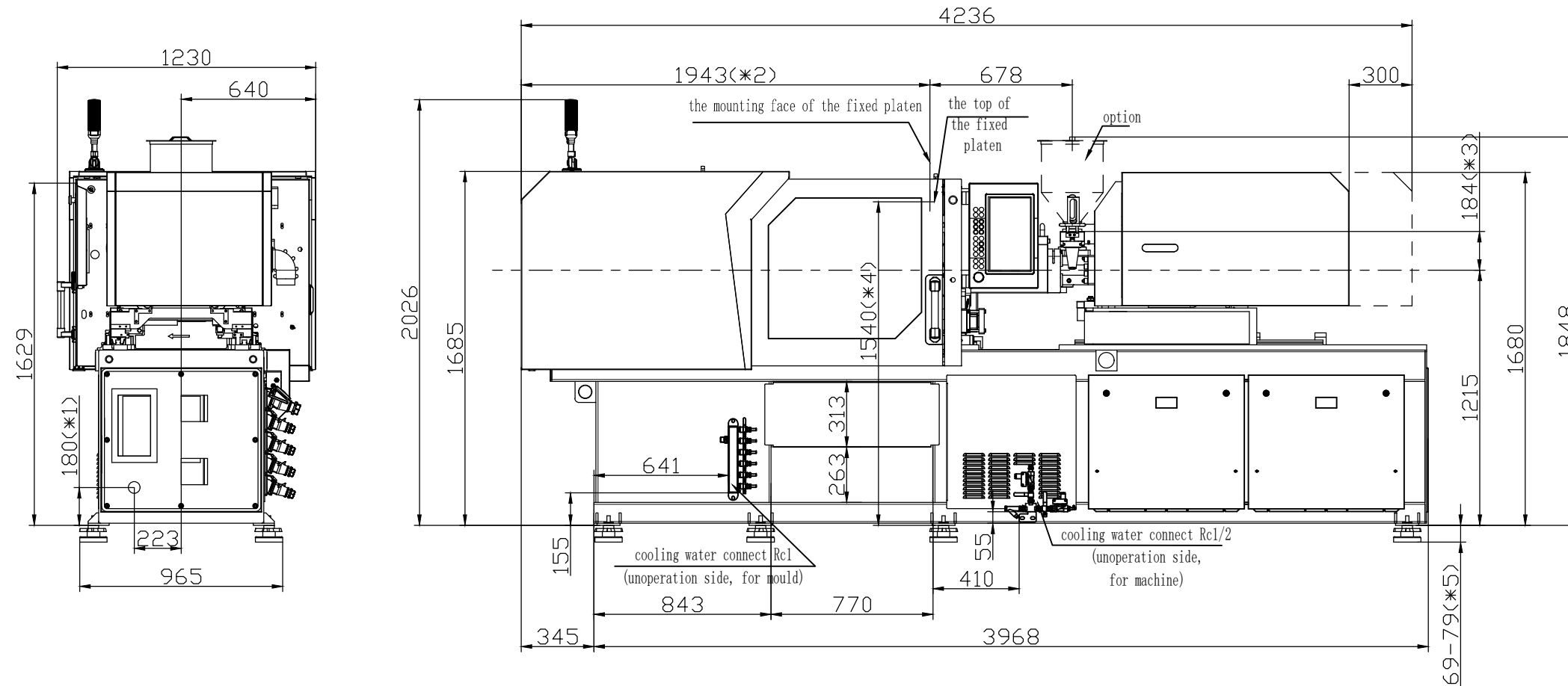
PLEASE READ:

The designs on this drawing were validated using machine manufacturer's drawings and/or information supplied by Absolute or the customer. It is the responsibility of the customer to review and confirm that all dimensions are consistent with the application intended and in accordance with the facility requirements for space, part clearance, overhead clearance, or any other interference. By signing this document, the customer accepts full responsibility for this design and application.

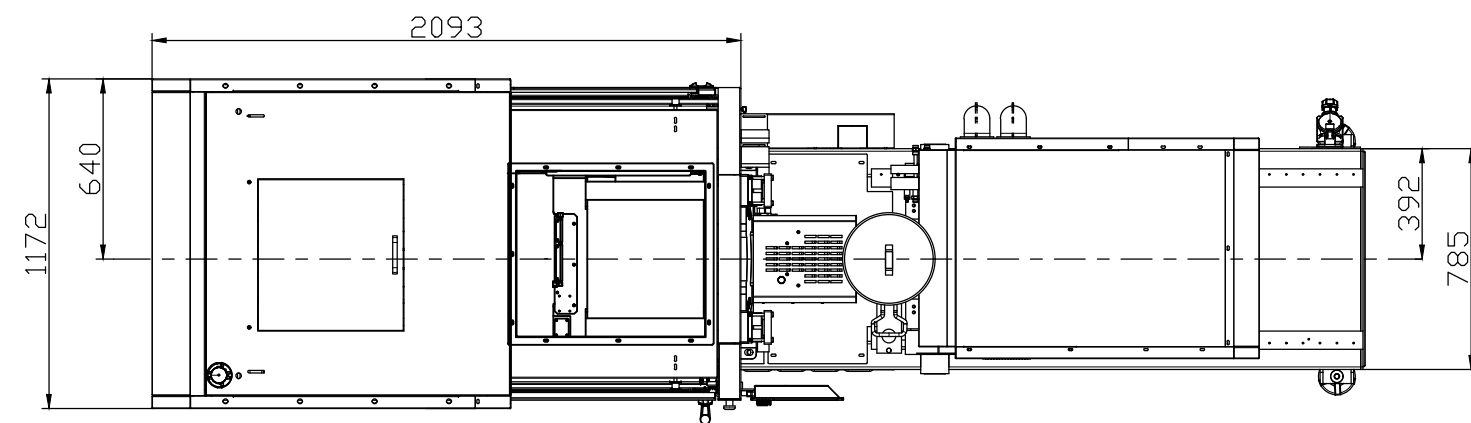
Customer:

Customer Approval:
Authorized Signature

Notes:



- *1 Power in
Current and Power Cable are shown in the Main Power Supply Circuit
- *2 To the mounting face of the fixed platen
- *3 To the face of Hopper fixing platform
- *4 To the top of the fixed platen
- *5 Vibration dumping support



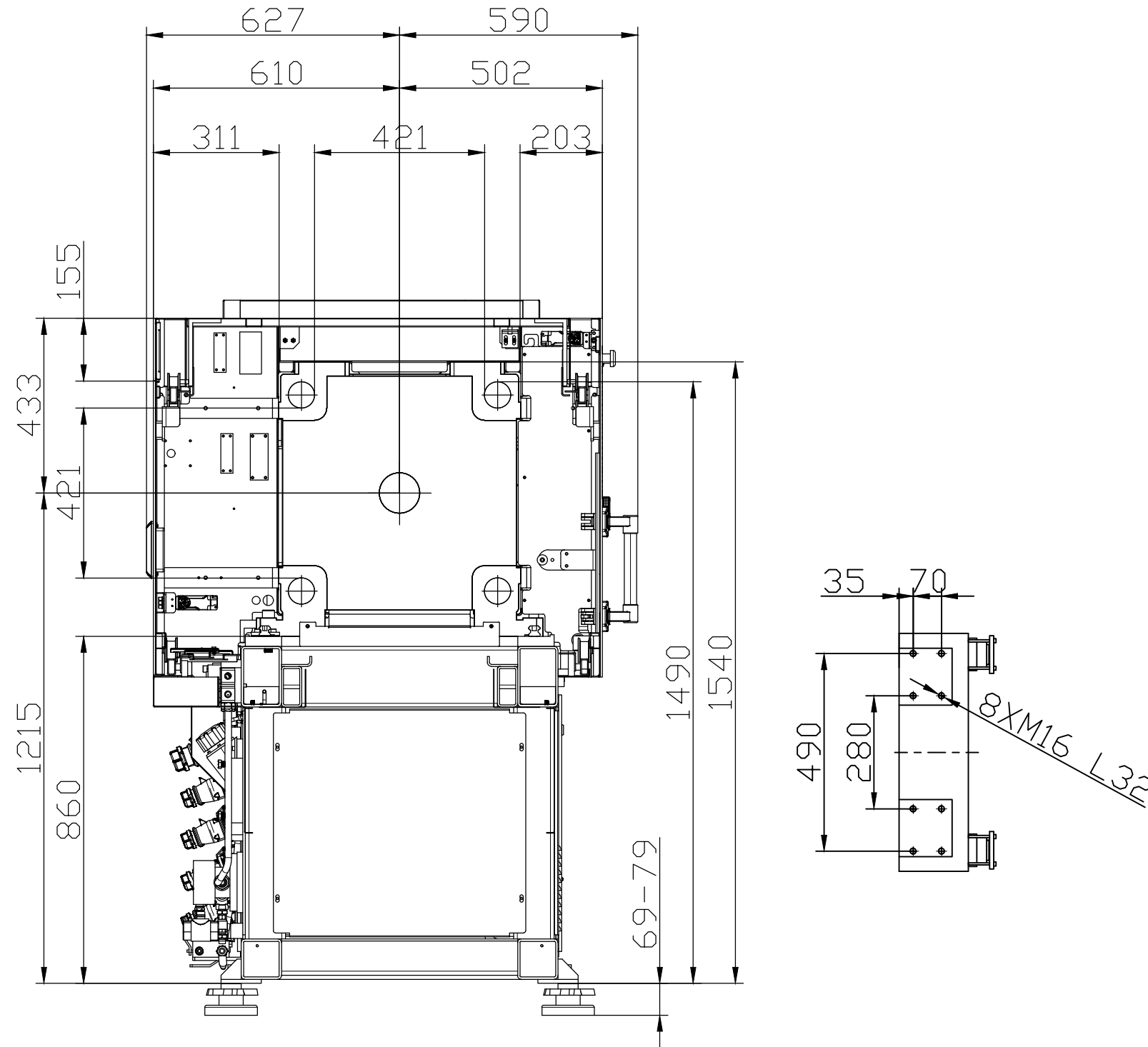
Absolute Haitian Corporation
33 Southgate St. Worcester, MA
T:+1 508-792-4305
www.absolutehaitian.com

Title: ZE V 900-160 Layout Drawing			Sheet: 1 of 1	
Machine Model: ZE V 900-160			Drawn By: Harry	Date: 3/22/2024
Machine Serial Number:			Chkd By: LEON XIE	Date: 3/22/2024
Machine Tonnage:			NOT TO SCALE	Size: 11 X 17 "B"
Revision	Date:	Drawing #: Layout	Units: mm / [in]	
Rev #: 1			Material:	
Rev #: 2			Part:	
Rev #: 3			Part:	
Rev #: 4			Part:	
Rev #: 5			Part:	

PLEASE READ:
The designs on this drawing were validated using machine manufacturer's drawings and/or information supplied by Absolute or the customer. It is the responsibility of the customer to review and confirm that all dimensions are consistent with the application intended and in accordance with the facility requirements for space, part clearance, overhead clearance, or any other interference. By signing this document, the customer accepts full responsibility for this design and application.

Customer: _____ Customer Approval: _____
Authorized Signature

Notes:



Absolute Haitian Corporation
 33 Southgate St. Worcester, MA
 T:+1 508-792-4305
 www.absolutehaitian.com

Title: ZE V 900 Robot Mounting Drawing

Machine Model: ZE V 900
 Machine Serial Number:
 Machine Tonnage:

Sheet: 1 of 1

Drawn By: Harry Date: 4/9/2024
 Chkd By: LEON XIE Date: 4/9/2024

Revision Date: Drawing #: Robot Mounting

Rev #: 1
 Rev #: 2
 Rev #: 3
 Rev #: 4
 Rev #: 5

NOT TO SCALE Size: 11 X 17 "B"

Units: mm / [in]
 Material:
 Part:
 Part:
 Part:
 Part:

PLEASE READ:

The designs on this drawing were validated using machine manufacturer's drawings and/or information supplied by Absolute or the customer. It is the responsibility of the customer to review and confirm that all dimensions are consistent with the application intended and in accordance with the facility requirements for space, part clearance, overhead clearance, or any other interference. By signing this document, the customer accepts full responsibility for this design and application.

Customer:

Customer Approval:
 Authorized Signature

Notes: