

Specification



ZE1200V-430

ZERES 5 Series: Electric with Integrated Hydraulics



Clamping Unit		ZE1200 V
Clamping Force	kN	1200
	US Tons	135
Mold Opening Stroke	mm	360
	in.	14.17
Minimum Mold Height	mm	150
	in.	5.91
Maximum Mold Height	mm	480
	in.	18.9
Maximum Daylight	mm	840
	in.	33.07
Distance Between Tie-Bars (HXV)	mm	470x470
	in.	18.5x18.5
Platen Dimensions (HXV)	mm	640x640
	in.	25.2x25.2
Minimum Mold Size	mm	305x305
	in.	12.01x12.01
Ejector Stroke	mm	100
	in.	3.94
Ejector Force	kN	33
	US Tons	4

Specification



ZE1200V-430

ZERES 5 Series: Electric with Integrated Hydraulics

Injection Unit		430		
Screw & Barrel Designation		A	B	C
Screw Diameter	mm	36	40	45
	in.	1.42	1.57	1.77
Screw L/D Ratio	L/D	23.3	21	18.7
Injection Volume (Theoretical)	cm ³	173	213	270
	cu.in.	10.56	13.00	16.48
Injection Weight (PS)	g	157	194	246
	oz.	5.54	6.84	8.68
Injection Pressure	MPa	247	200	158
	psi	35824	29008	22916
Holding Pressure	MPa	197	160	126
	psi	28572	23206	18275
Screw Speed	rpm	400	400	400
Plasticizing Rate (GPPS)	g/s	22	30	42
	oz./s	0.78	1.06	1.48
Nozzle Contact Force	kN	65	65	65
	US Tons	7	7	7
Injection Unit		430		
Injection Speed	mm/s	200		
	in./s	7.87		
Injection Rate (PS)	g/s	177	219	277
	oz./s	6.24	7.72	9.77
Injection Unit		430h		
Injection Speed	mm/s	300		
	in./s	11.81		
Injection Rate (PS)	g/s	266	329	416
	oz./s	9.38	11.61	14.67
Injection Unit		430hs		
Injection Speed	mm/s	500		
	in./s	19.69		
Injection Rate (PS)	g/s	444	548	694
	oz./s	15.66	19.33	24.48

Specification



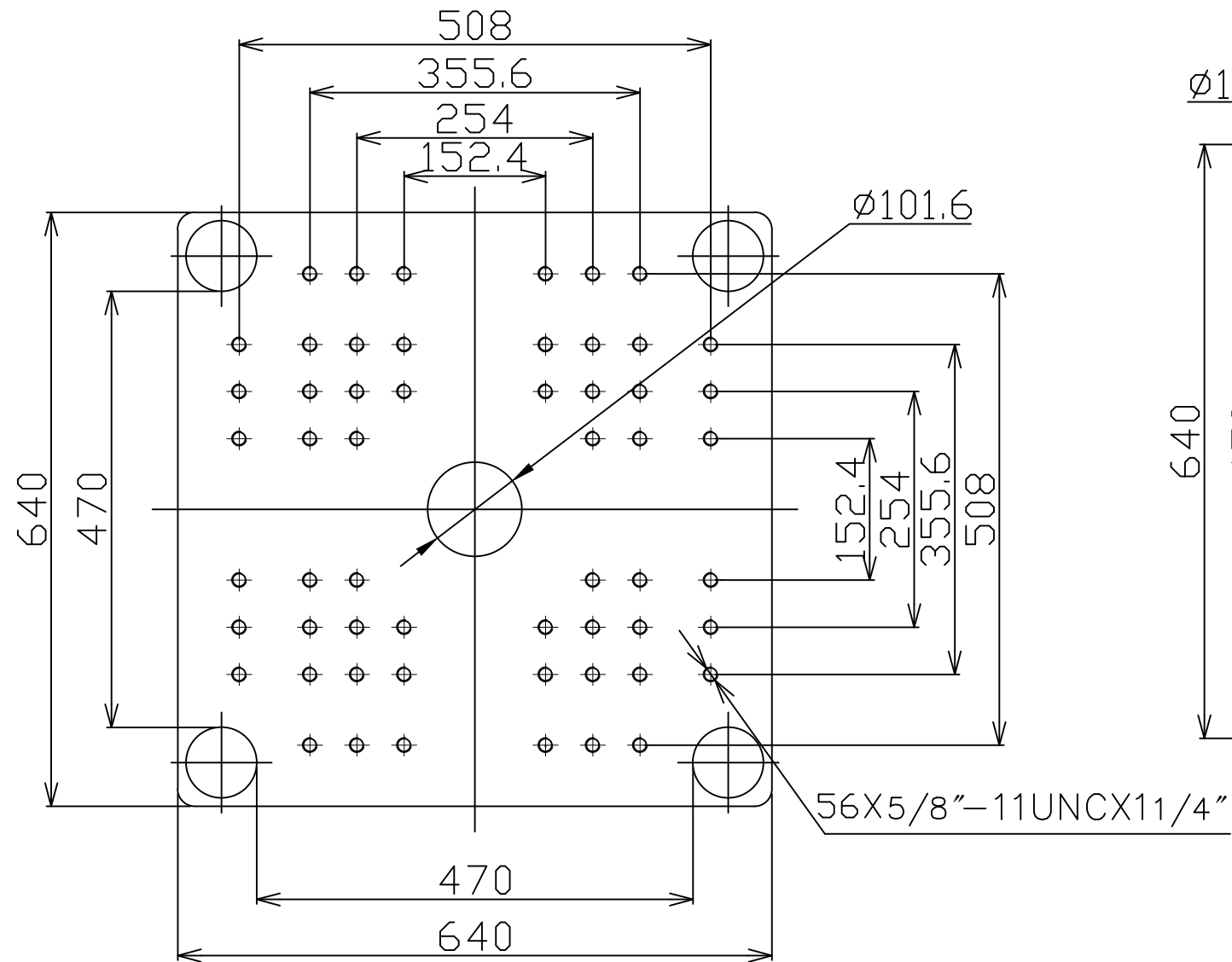
ZE1200V-430

ZERES 5 Series: Electric with Integrated Hydraulics

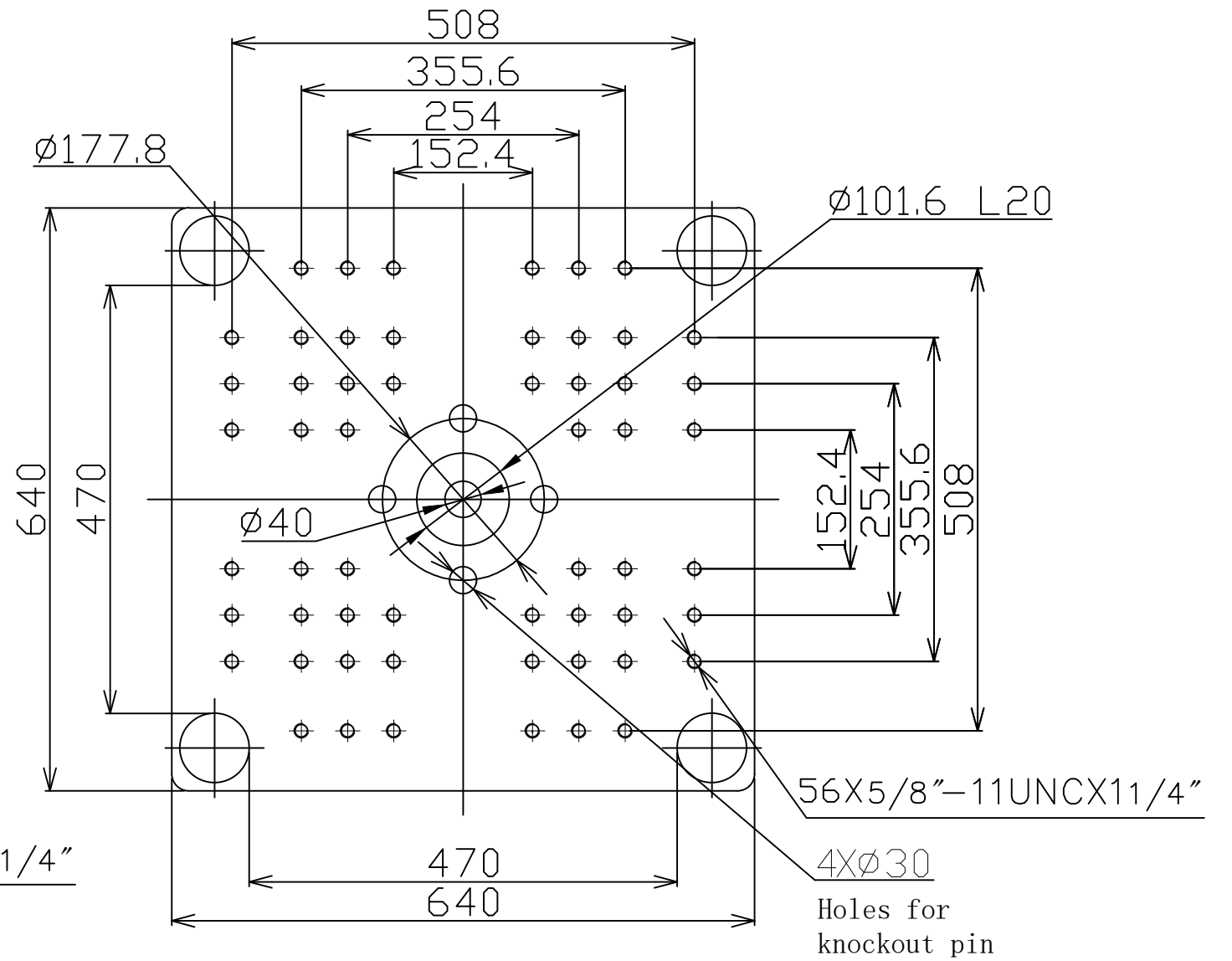
Other		
Connection Power	kW/A	430:27/45 430h:31/52 430hs:48/81
Heating Power	kW	13.5
Machine Dimension	m in.	5.28x1.36x2.11 208x54x83
Machine Weight	t lbs.	5.33 11751
Hopper Capacity (OP)	l gal	25 7
Oil Pressure	MPa psi	17.5 2538
Oil Flow	l/min gal/min	48 13
Oil Tank	l gal	78 21

***NOTE:**

1. Machine dimensions and weights are based on the international standard configuration and are for reference only. Any options or country specific requirements will affect this. Contact Absolute Haitian service department for machine specific information.
2. Power requirements are based on the international standard configuration and are for reference only. Any options or country specific requirements will affect this. Contact Absolute Haitian service department for machine specific information.



Fixed Platen



Moving Platen



Absolute Haitian Corporation
33 Southgate St. Worcester, MA
T: +1 508-792-4305
www.absolutehaitian.com

Title: ZE/VEV 1200 Fixed & Moving Platens Drawing

Machine Model: ZE/VEV 1200
Machine Serial Number:
Machine Tonnage:

Sheet: 1 of 1

Drawn By: Harry Date: 1/9/2024
Chkd By: LEON XIE Date: 1/9/2024

Revision	Date:	Drawing #:	NOT TO SCALE	Size: 11 X 17 "B"
Rev #: 1				Units: mm / [in]
Rev #: 2				Material:
Rev #: 3				Part:
Rev #: 4				Part:
Rev #: 5				Part:

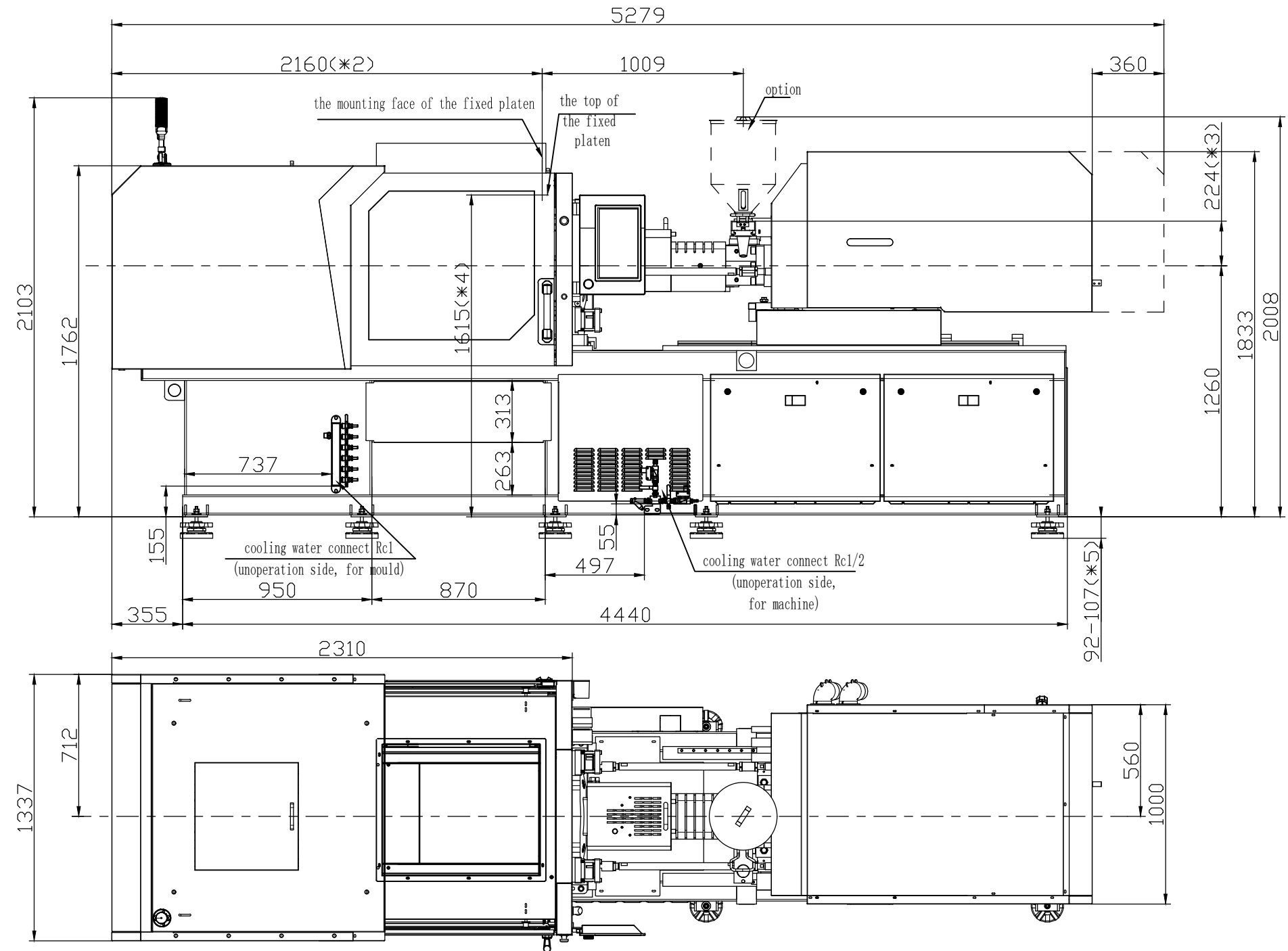
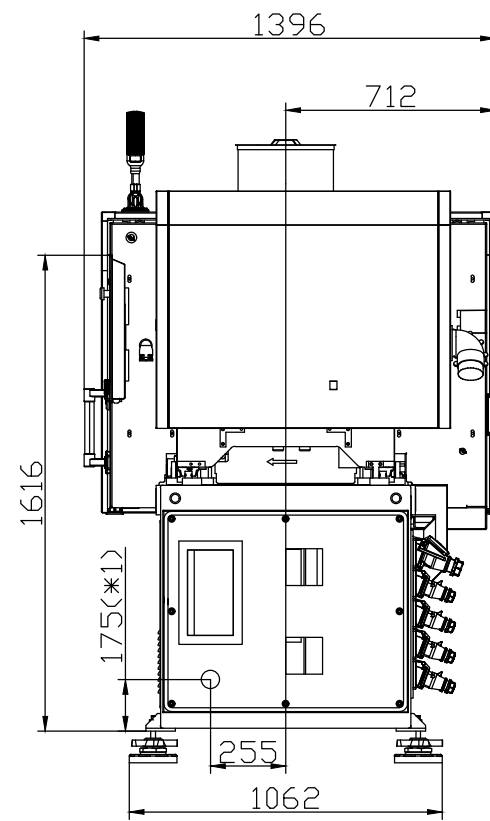
PLEASE READ:

The designs on this drawing were validated using machine manufacturer's drawings and/or information supplied by Absolute or the customer. It is the responsibility of the customer to review and confirm that all dimensions are consistent with the application intended and in accordance with the facility requirements for space, part clearance, overhead clearance, or any other interference. By signing this document, the customer accepts full responsibility for this design and application.

Customer:

Customer Approval:
Authorized Signature

Notes:



- *1 Power in Current and Power Cable are shown in the Main Power Supply Circuit
- *2 To the mounting face of the fixed platen
- *3 To the face of Hopper fixing platform
- *4 To the top of the fixed platen
- *5 Vibration dumping support



Absolute Haitian Corporation
33 Southgate St. Worcester, MA
T:+1 508-792-4305
www.absolutehaitian.com

Title: ZE V 1200-430 Layout Drawing

Machine Model: ZE V 1200-430
Machine Serial Number:
Machine Tonnage:

Sheet: 1 of 1

Drawn By: Harry Date: 3/22/2024
Chkd By: LEON XIE Date: 3/22/2024

NOT TO SCALE Size: 11 X 17 "B"

Revision	Date:	Drawing #:	Layout
Rev #: 1			
Rev #: 2			
Rev #: 3			
Rev #: 4			
Rev #: 5			

Units: mm / [in]

Material:

Part:

Part:

Part:

Part:

PLEASE READ:

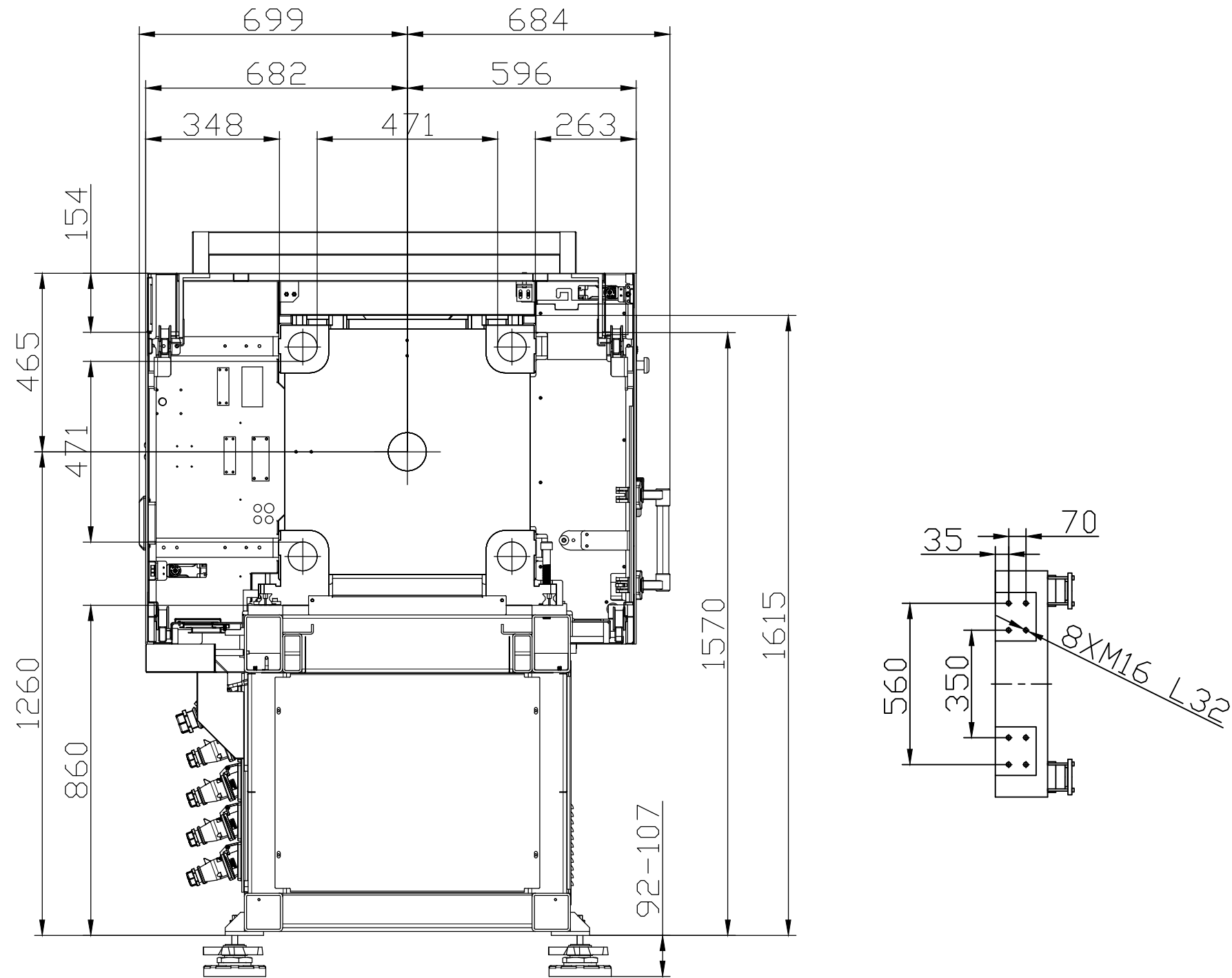
The designs on this drawing were validated using machine manufacturer's drawings and/or information supplied by Absolute or the customer. It is the responsibility of the customer to review and confirm that all dimensions are consistent with the application intended and in accordance with the facility requirements for space, part clearance, overhead clearance, or any other interference. By signing this document, the customer accepts full responsibility for this design and application.

Customer:

Customer Approval:

Authorized Signature

Notes:



Absolute Haitian Corporation
 33 Southgate St. Worcester, MA
 T:+1 508-792-4305
 www.absolutehaitian.com

Title: ZE V 1200 Robot Mounting Drawing

Machine Model: ZE V 1200
 Machine Serial Number:
 Machine Tonnage:

Sheet: 1 of 1

Drawn By: Harry Date: 4/9/2024
 Chkd By: LEON XIE Date: 4/9/2024

Revision	Date:	Drawing #: Robot Mounting
Rev #: 1		
Rev #: 2		
Rev #: 3		
Rev #: 4		
Rev #: 5		

NOT TO SCALE Size: 11 X 17 "B"
 Units: mm / [in]
 Material:
 Part:
 Part:
 Part:
 Part:

PLEASE READ:

The designs on this drawing were validated using machine manufacturer's drawings and/or information supplied by Absolute or the customer. It is the responsibility of the customer to review and confirm that all dimensions are consistent with the application intended and in accordance with the facility requirements for space, part clearance, overhead clearance, or any other interference. By signing this document, the customer accepts full responsibility for this design and application.

Customer:

Customer Approval:
 Authorized Signature

Notes: