

Specification



JU13000V-11500

JUPITER 5 Series: Two-Platen Servo-Hydraulic



| Clamping Unit | | JU13000V |
|---------------------------------|---------|-------------|
| Clamping Force | kN | 13000 |
| | US Tons | 1461 |
| Mold Opening Stroke (Min/Max) | mm | 2250/1500 |
| | in. | 88.58/59.06 |
| Minimum Mold Height | mm | 600 |
| | in. | 23.62 |
| Maximum Mold Height | mm | 1350 |
| | in. | 53.15 |
| Maximum Daylight | mm | 2850 |
| | in. | 112.2 |
| Distance Between Tie-Bars (HXV) | mm | 1420×1170 |
| | in. | 55.91×46.06 |
| Platen Dimensions (HXV) | mm | 2000×1770 |
| | in. | 78.74×69.69 |
| Ejector Stroke | mm | 350 |
| | in. | 13.78 |
| Ejector Force | kN | 230 |
| | US Tons | 26 |
| Maximum Mold Weight* | t | 23 |
| | lbs. | 50706 |

Specification



JU13000V-11500

JUPITER 5 Series: Two-Platen Servo-Hydraulic

| Injection Unit | | 11500 | | | |
|--------------------------------|-----------------|--------|--------|--------|--------|
| Screw & Barrel Designation | | A | B | C | D |
| Screw Diameter | mm | 110 | 120 | 130 | 140 |
| | in. | 4.33 | 4.72 | 5.12 | 5.51 |
| Screw L/D Ratio | L/D | 26.2 | 24 | 22.2 | 20.6 |
| Injection Volume (theoretical) | cm ³ | 5226 | 6220 | 7300 | 8466 |
| | cu.in. | 318.91 | 379.57 | 445.47 | 516.63 |
| Injection Weight (PS) | g | 4756 | 5660 | 6643 | 7704 |
| | oz. | 167.76 | 199.65 | 234.32 | 271.75 |
| Injection Rate (PS) | g/s | 884 | 1052 | 1235 | 1432 |
| | oz./s | 31.18 | 37.11 | 43.56 | 50.51 |
| Injection Pressure | MPa | 189 | 159 | 135 | 117 |
| | psi | 27412 | 23061 | 19580 | 16969 |
| Injection Pressure (max)* | MPa | 217 | 183 | 156 | 134 |
| | psi | 31473 | 26542 | 22626 | 19435 |
| Plasticizing Rate (GPPS) | g/s | 123 | 142 | 164 | 187 |
| | oz./s | 4.34 | 5.01 | 5.78 | 6.60 |
| Plasticizing Rate (HDPE) | g/s | 187 | 217 | 240 | 273 |
| | oz./s | 6.60 | 7.65 | 8.47 | 9.63 |
| Screw Speed | rpm | 105 | 105 | 105 | 105 |



Specification



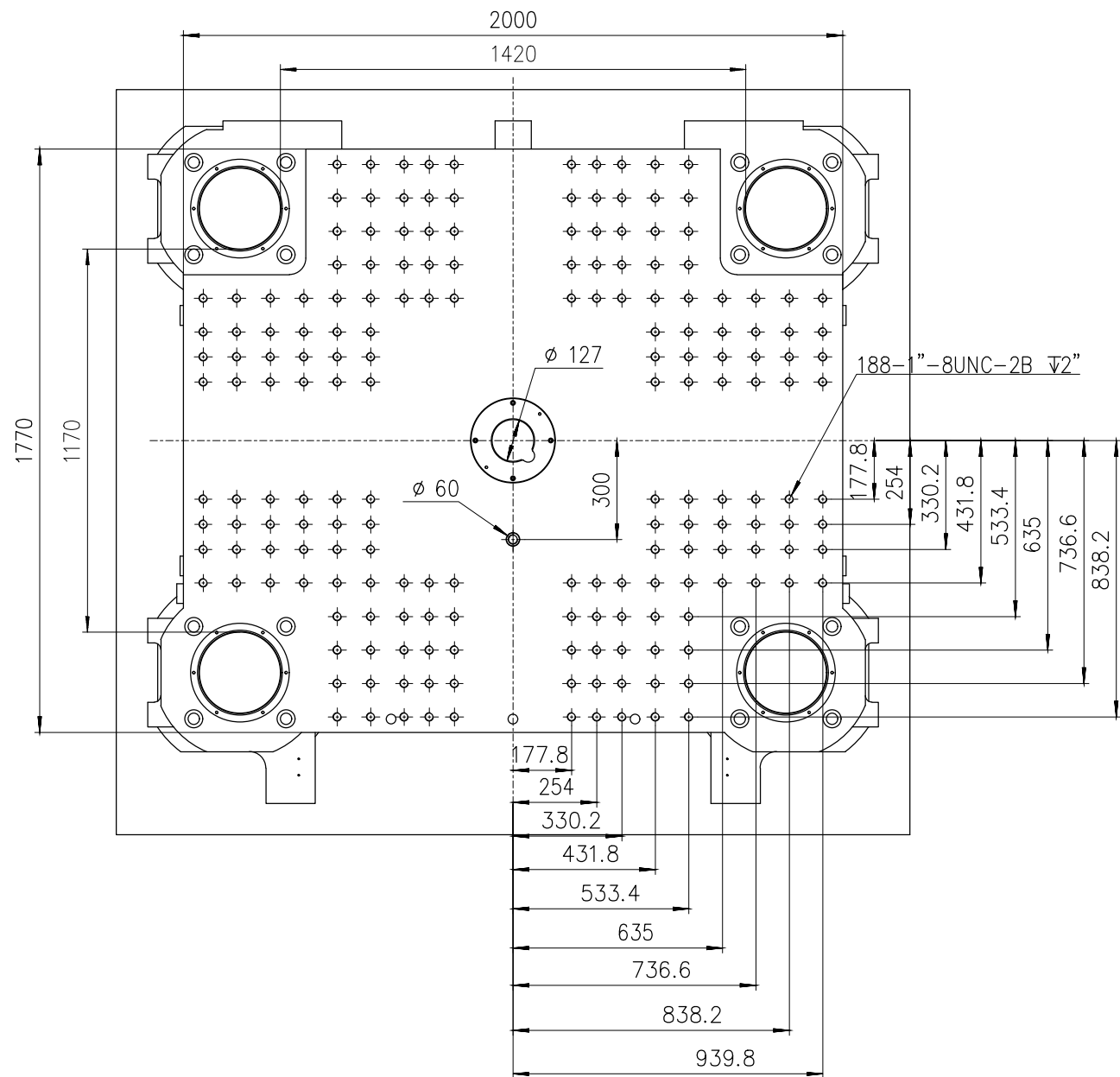
JU13000V-11500

JUPITER 5 Series: Two-Platen Servo-Hydraulic

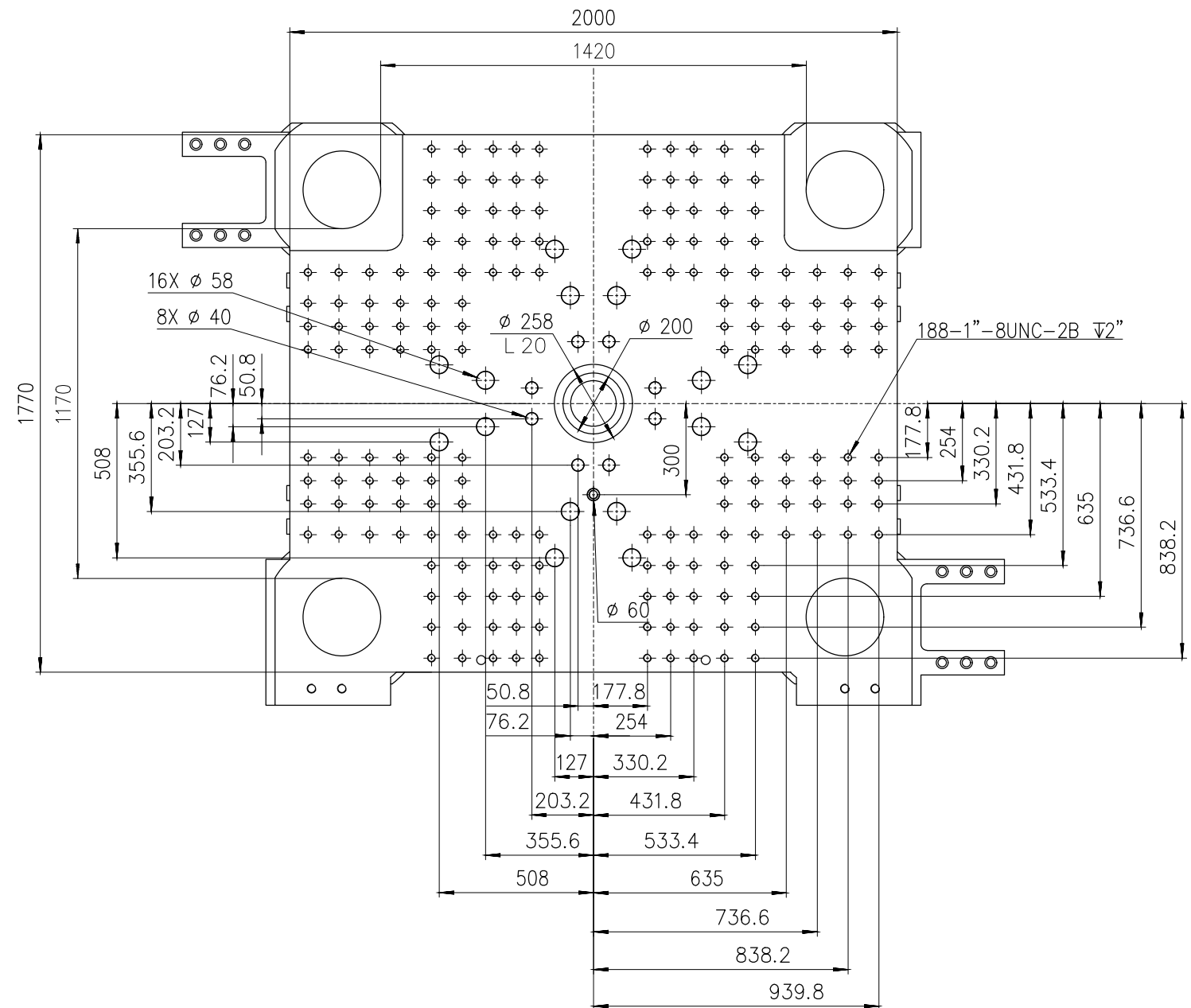
| Other | | |
|---------------------------|------|-----------------|
| Pump Motor Power | kW | 135 |
| Heater Power | kW | 104 |
| Machine Dimension (LxWxH) | m | 10.79×3.45×4.22 |
| | in. | 425×136×166 |
| Machine Weight | t | 57 |
| | lbs. | 125663 |
| Hopper Capacity | kg | 400 |
| | lbs. | 882 |
| Oil Tank | l | 840 |
| | gal | 222 |

***NOTE:**

1. Injection Pressure (max) uses the machine's regeneration oil circuit to increase the injection pressure. This function will reduce injection control and repeatability. The standard "Injection Pressure" specification is the maximum injection pressure in a normal operating mode.
2. Moving platen max mold weight is 2/3 of total max mold weight.
3. Electric screw drive (screw rotate) is standard for injection units under 11500. For injection units 11500 and above electric screw drive is optional.
4. Machine dimensions and weights are based on the international standard configuration and are for reference only. Any options or country specific requirements will affect this. Contact Absolute Haitian service department for machine specific information.
5. Power requirements are based on the international standard configuration and are for reference only. Any options or country specific requirements will affect this. Contact Absolute Haitian service department for machine specific information.



Fixed Platen



Moving Platen



Absolute Haitian Corporation
33 Southgate St. Worcester, MA
T: +1 508-792-4305
www.absolutehaitian.com

Title: JUV 13000 Fixed & Moving Platens Drawing

Machine Model: JUV 13000
Machine Serial Number:
Machine Tonnage:

Sheet: 1 of 1

Drawn By: Harry Date: 1/9/2024
Chkd By: LEON XIE Date: 1/9/2024

| Revision | Date: | Drawing #: | NOT TO SCALE | Size: 11 X 17 "B" |
|----------|-------|------------|--------------|-------------------|
| Rev #: 1 | | | | Units: mm / [in] |
| Rev #: 2 | | | | Material: |
| Rev #: 3 | | | | Part: |
| Rev #: 4 | | | | Part: |
| Rev #: 5 | | | | Part: |

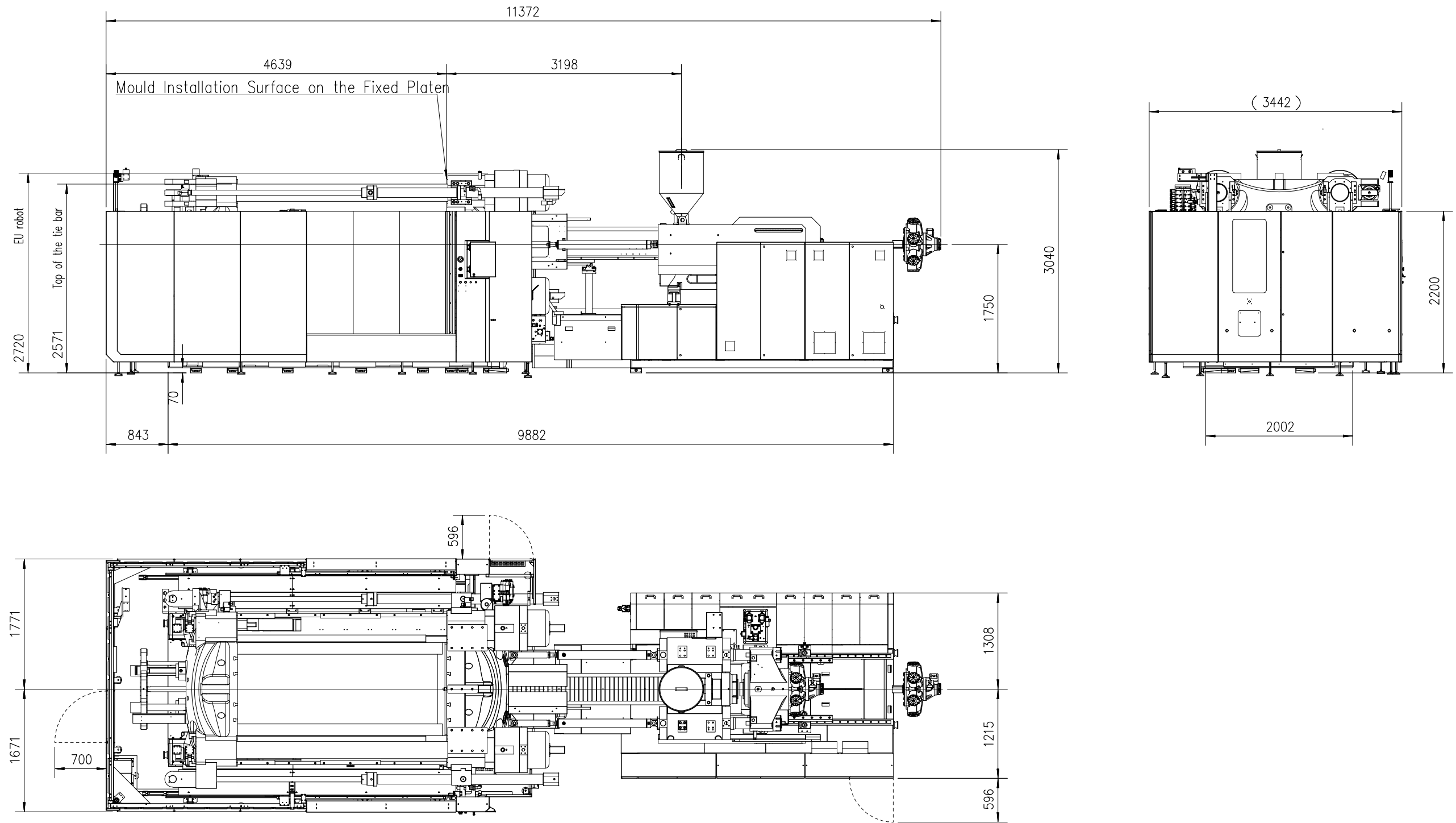
PLEASE READ:

The designs on this drawing were validated using machine manufacturer's drawings and/or information supplied by Absolute or the customer. It is the responsibility of the customer to review and confirm that all dimensions are consistent with the application intended and in accordance with the facility requirements for space, part clearance, overhead clearance, or any other interference. By signing this document, the customer accepts full responsibility for this design and application.

Customer:

Customer Approval:
Authorized Signature

Notes:



Absolute Haitian Corporation
 33 Southgate St. Worcester, MA
 T:+1 508-792-4305
 www.absolutehaitian.com

Title: JU V 13000-11500 Layout Drawing

Machine Model: JU V 13000-11500
 Machine Serial Number:
 Machine Tonnage:

Sheet: 1 of 1

Drawn By: Harry Date: 3/21/2024
 Chkd By: LEON XIE Date: 3/21/2024

Revision Date: Drawing #: Layout

| Revision | Date: | Drawing #: Layout |
|----------|-------|-------------------|
| Rev #: 1 | | |
| Rev #: 2 | | |
| Rev #: 3 | | |
| Rev #: 4 | | |
| Rev #: 5 | | |

Units: mm / [in]
 Material:
 Part:
 Part:
 Part:
 Part:

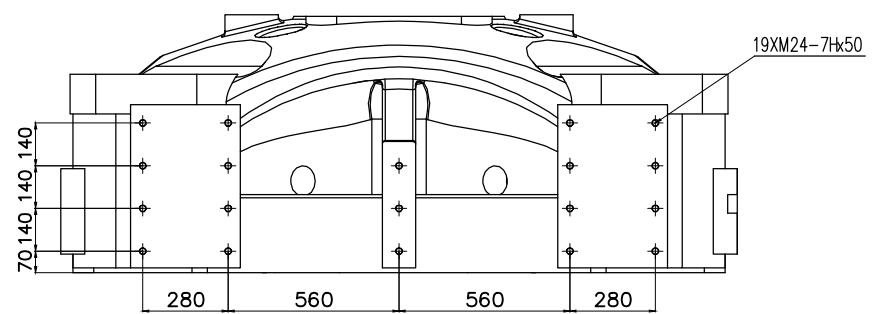
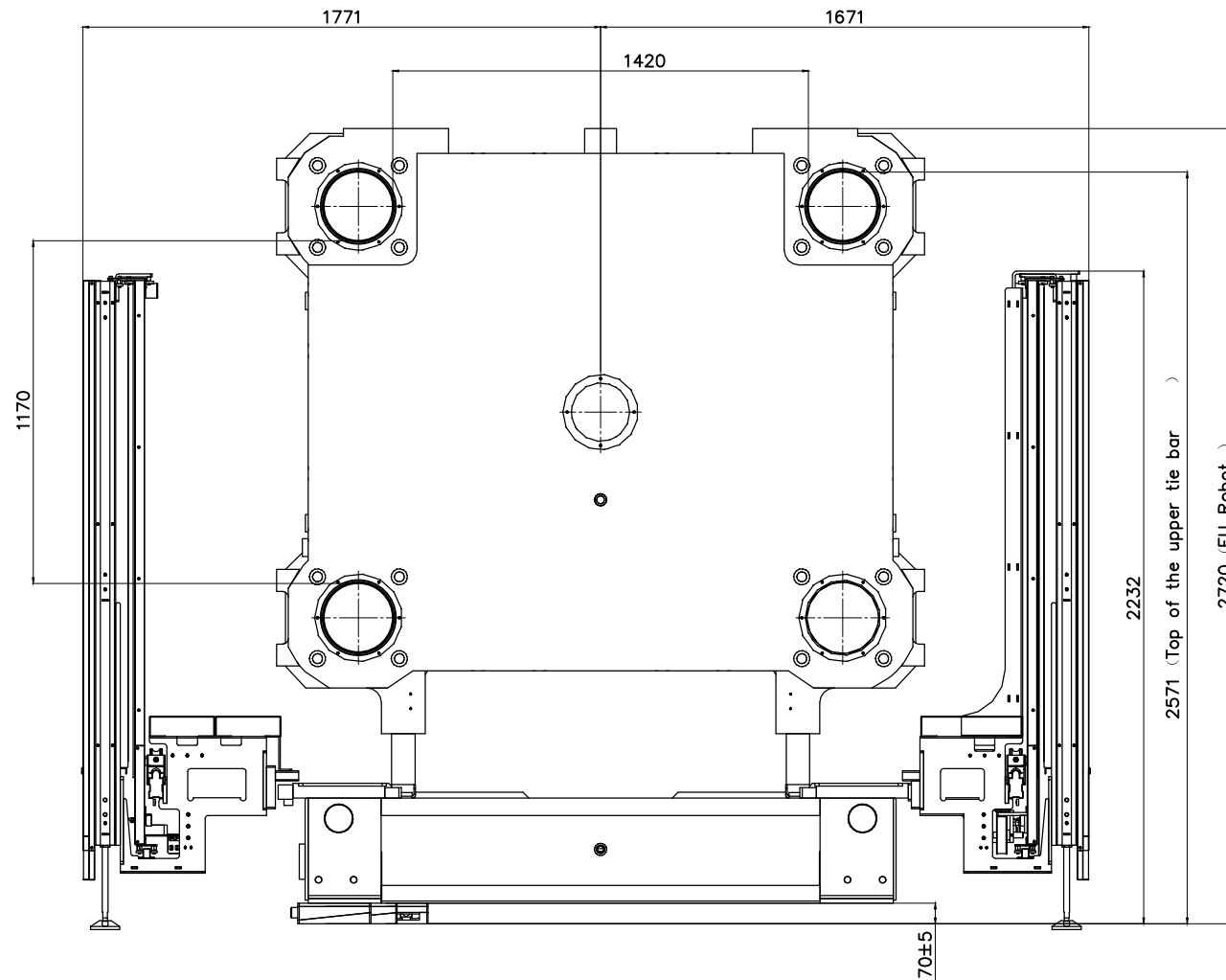
PLEASE READ:

The designs on this drawing were validated using machine manufacturer's drawings and/or information supplied by Absolute or the customer. It is the responsibility of the customer to review and confirm that all dimensions are consistent with the application intended and in accordance with the facility requirements for space, part clearance, overhead clearance, or any other interference. By signing this document, the customer accepts full responsibility for this design and application.

Customer:

Customer Approval:
 Authorized Signature

Notes:



Absolute Haitian Corporation
 33 Southgate St. Worcester, MA
 T:+1 508-792-4305
 www.absolutehaitian.com

Title: JU V 13000-11500 Robot Mounting Drawing

Machine Model: JU V 13000-11500
 Machine Serial Number:
 Machine Tonnage:

Sheet: 1 of 1

Drawn By: Harry Date: 4/9/2024
 Chkd By: LEON XIE Date: 4/9/2024

Revision Date: Drawing #: Robot Mounting

Rev #: 1
 Rev #: 2
 Rev #: 3
 Rev #: 4
 Rev #: 5

NOT TO SCALE Size: 11 X 17 "B"

Units: mm / [in]
 Material:
 Part:
 Part:
 Part:
 Part:

PLEASE READ:

The designs on this drawing were validated using machine manufacturer's drawings and/or information supplied by Absolute or the customer. It is the responsibility of the customer to review and confirm that all dimensions are consistent with the application intended and in accordance with the facility requirements for space, part clearance, overhead clearance, or any other interference. By signing this document, the customer accepts full responsibility for this design and application.

Customer:

Customer Approval:
 Authorized Signature

Notes: