

Specification



ZE900V-120

ZERES 5 Series: Electric with Integrated Hydraulics



Clamping Unit		ZE900 V
Clamping Force	kN	900
	US Tons	101
Mold Opening Stroke	mm	320
	in.	12.6
Minimum Mold Height	mm	150
	in.	5.91
Maximum Mold Height	mm	410
	in.	16.14
Maximum Daylight	mm	730
	in.	28.74
Distance Between Tie-Bars (HXV)	mm	420x420
	in.	16.54x16.54
Platen Dimensions (HXV)	mm	580x580
	in.	22.83x22.83
Minimum Mold Size	mm	270x270
	in.	10.63x10.63
Ejector Stroke	mm	80
	in.	3.15
Ejector Force	kN	24.5
	US Tons	3

Specification



ZE900V-120

ZERES 5 Series: Electric with Integrated Hydraulics

Injection Unit		120		
Screw & Barrel Designation		A	B	C
Screw Diameter	mm	22	26	30
	in.	0.87	1.02	1.18
Screw L/D Ratio	L/D	22	22	19
Injection Volume (Theoretical)	cm ³	36	58	77
	cu.in.	2.20	3.54	4.70
Injection Weight (PS)	g	32.8	52	70
	oz.	1.16	1.83	2.47
Injection Pressure	MPa	280	220	165
	psi	40611	31908	23931
Holding Pressure	MPa	220	160	120
	psi	31908	23206	17405
Screw Speed	rpm	400	400	400
Plasticizing Rate (GPPS)	g/s	6	8.8	13
	oz./s	0.21	0.31	0.46
Nozzle Contact Force	kN	26	26	26
	US Tons	3	3	3
Injection Unit		120		
Injection Speed	mm/s	200		
	in./s	7.87		
Injection Rate (PS)	g/s	66	92	123
	oz./s	2.33	3.25	4.34
Injection Unit		120h		
Injection Speed	mm/s	350		
	in./s	13.78		
Injection Rate (PS)	g/s	116	162	216
	oz./s	4.09	5.71	7.62
Injection Unit		120hs		
Injection Speed	mm/s	500		
	in./s	19.69		
Injection Rate (PS)	g/s	166	231	308
	oz./s	5.86	8.15	10.86

Specification



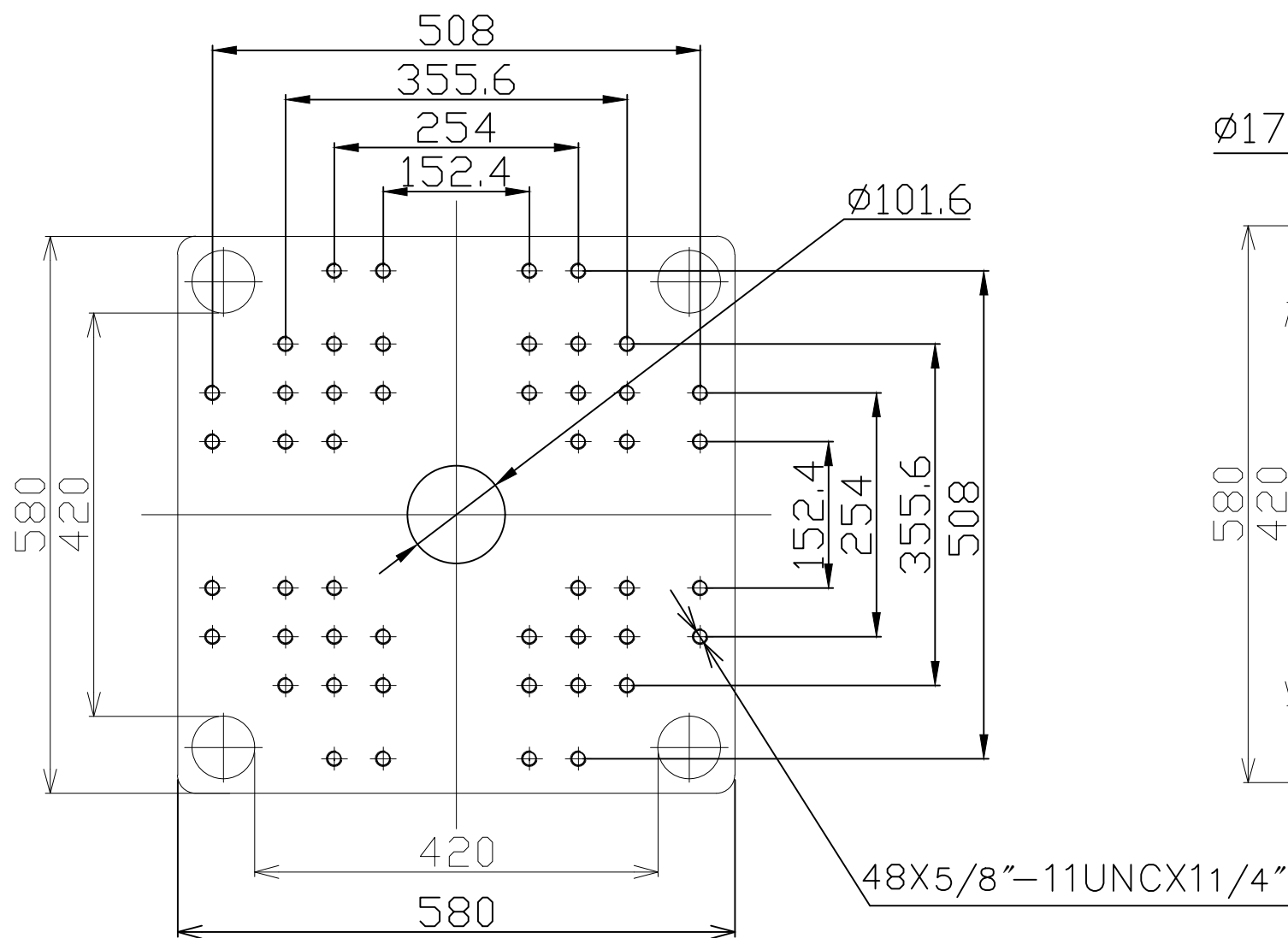
ZE900V-120

ZERES 5 Series: Electric with Integrated Hydraulics

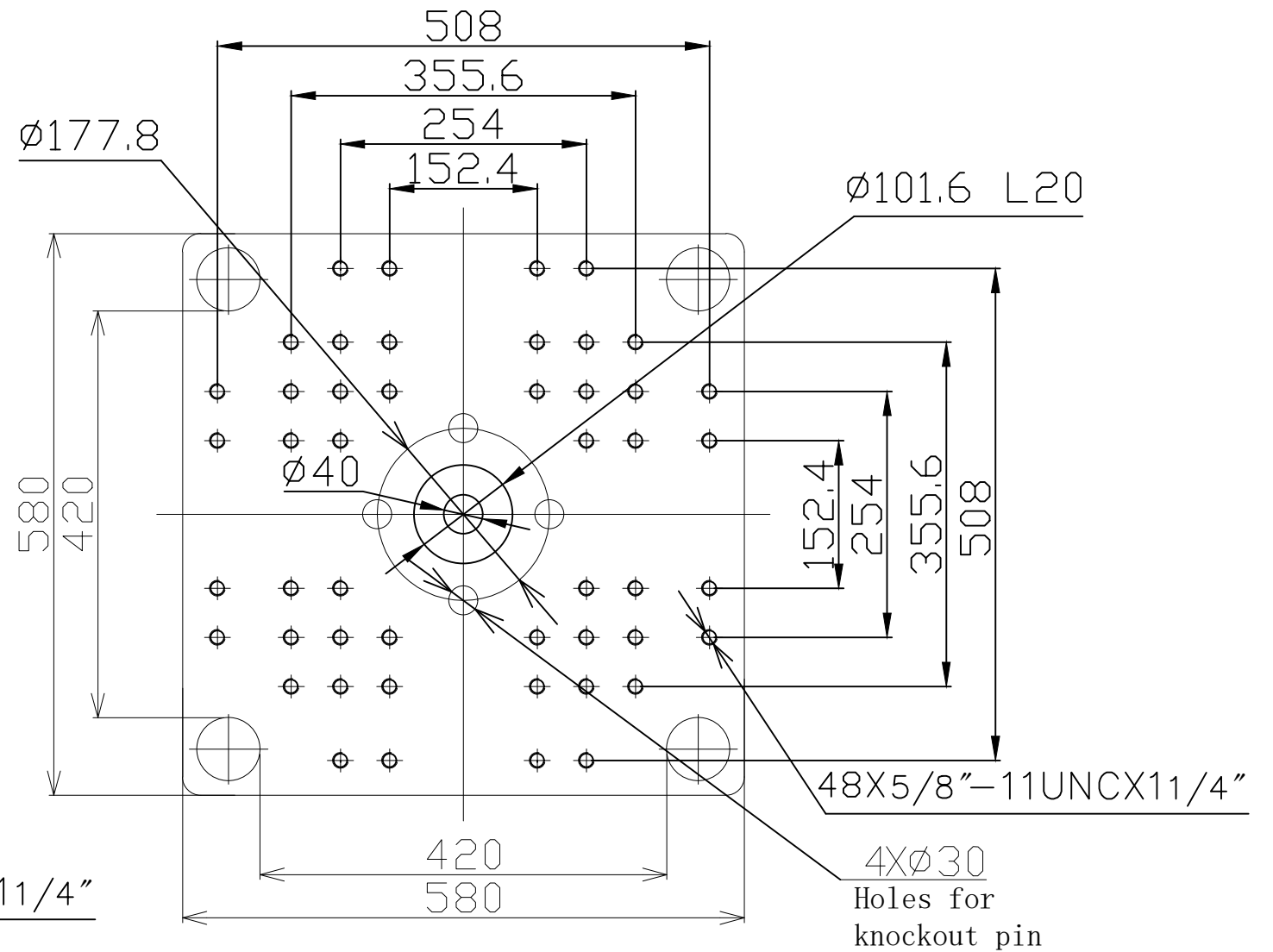
Other				
Connection Power	kW/A		120:12/21 120h:16/28 120hs:19/33	
Heating Power	kW	6	7.8	7.8
Machine Dimension	m	4.33x1.23x2.03		
	in.	170x48x80		
Machine Weight	t	3.78		
	lbs.	8333		
Hopper Capacity (OP)	l	15		
	gal	4		
Oil Pressure	MPa	17.5		
	psi	2538		
Oil Flow	l/min	35		
	gal/min	9		
Oil Tank	l	47		
	gal	12		

***NOTE:**

1. Machine dimensions and weights are based on the international standard configuration and are for reference only. Any options or country specific requirements will affect this. Contact Absolute Haitian service department for machine specific information.
2. Power requirements are based on the international standard configuration and are for reference only. Any options or country specific requirements will affect this. Contact Absolute Haitian service department for machine specific information.



Fixed Platen



Moving Platen



Absolute Haitian Corporation
33 Southgate St. Worcester, MA
T: +1 508-792-4305
www.absolutehaitian.com

Title: ZE/VEV 900 Fixed & Moving Platens Drawing

Machine Model: ZE/VEV 900
Machine Serial Number:
Machine Tonnage:

Sheet: 1 of 1

Drawn By: Harry Date: 1/9/2024
Chkd By: LEON XIE Date: 1/9/2024

Revision	Date:	Drawing #:	NOT TO SCALE	Size: 11 X 17 "B"
Rev #: 1				Units: mm / [in]
Rev #: 2				Material:
Rev #: 3				Part:
Rev #: 4				Part:
Rev #: 5				Part:

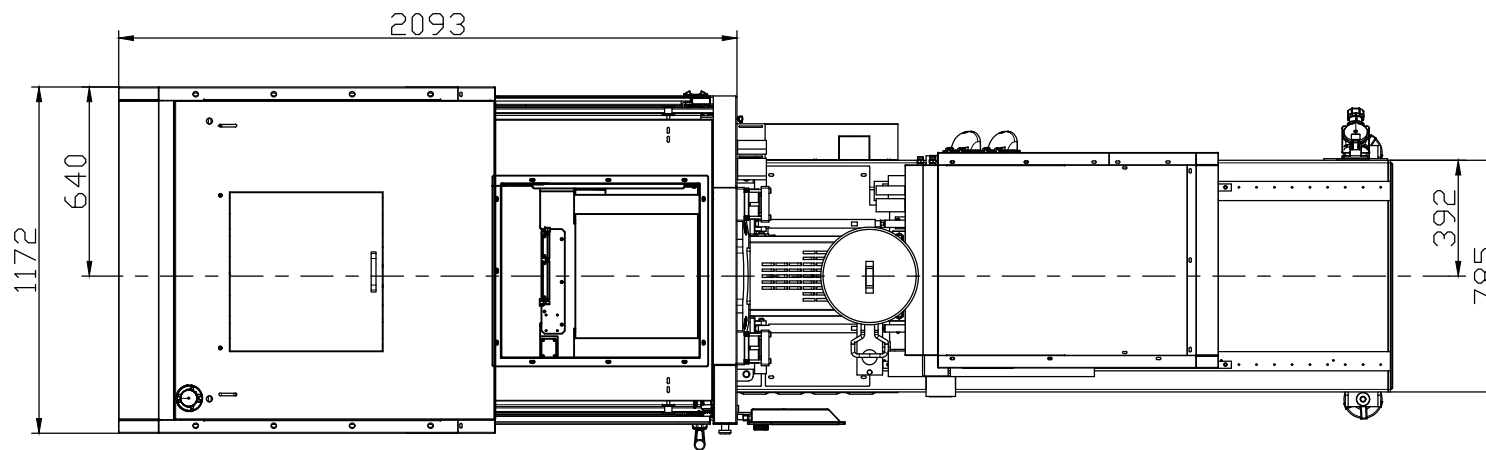
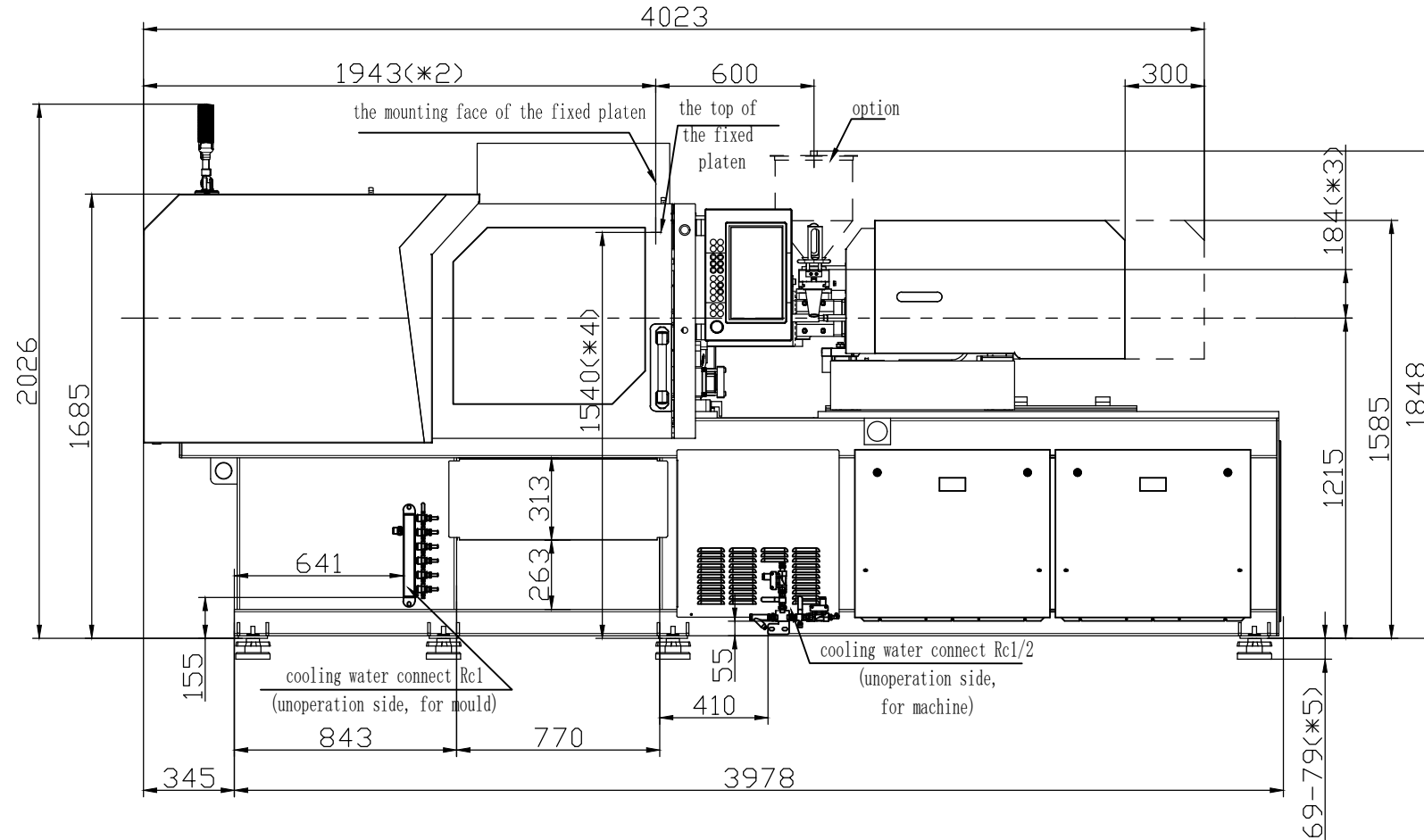
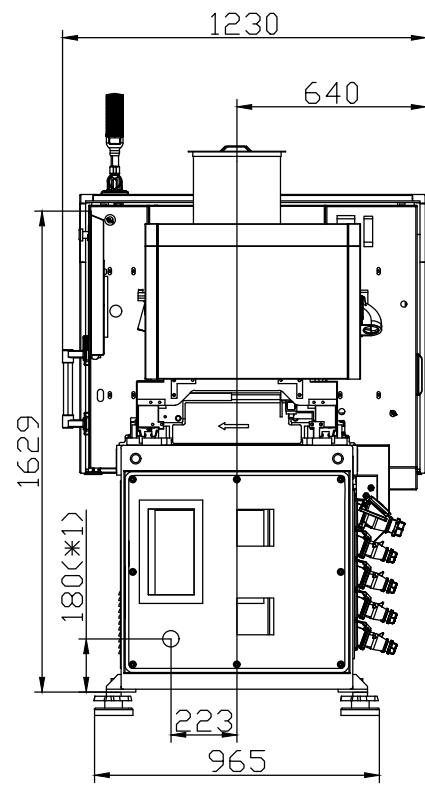
PLEASE READ:

The designs on this drawing were validated using machine manufacturer's drawings and/or information supplied by Absolute or the customer. It is the responsibility of the customer to review and confirm that all dimensions are consistent with the application intended and in accordance with the facility requirements for space, part clearance, overhead clearance, or any other interference. By signing this document, the customer accepts full responsibility for this design and application.

Customer:

Customer Approval:
Authorized Signature

Notes:



- *1 Power in
Current and Power Cable are shown in the Main Power Supply Circuit
- *2 To the mounting face of the fixed platen
- *3 To the face of Hopper fixing platform
- *4 To the top of the fixed platen
- *5 Vibration dumping support



Absolute Haitian Corporation
33 Southgate St. Worcester, MA
T:+1 508-792-4305
www.absolutehaitian.com

Title: VE V 900-120 Layout Drawing

Machine Model: VE V 900-120
Machine Serial Number:
Machine Tonnage:

Sheet: 1 of 1

Drawn By: Harry Date: 3/22/2024
Chkd By: LEON XIE Date: 3/22/2024

Revision Date: Drawing #: Layout

Revision	Date:	Drawing #:	Layout
Rev #: 1			
Rev #: 2			
Rev #: 3			
Rev #: 4			
Rev #: 5			

NOT TO SCALE Size: 11 X 17 "B"
Units: mm / [in]
Material:
Part:
Part:
Part:
Part:

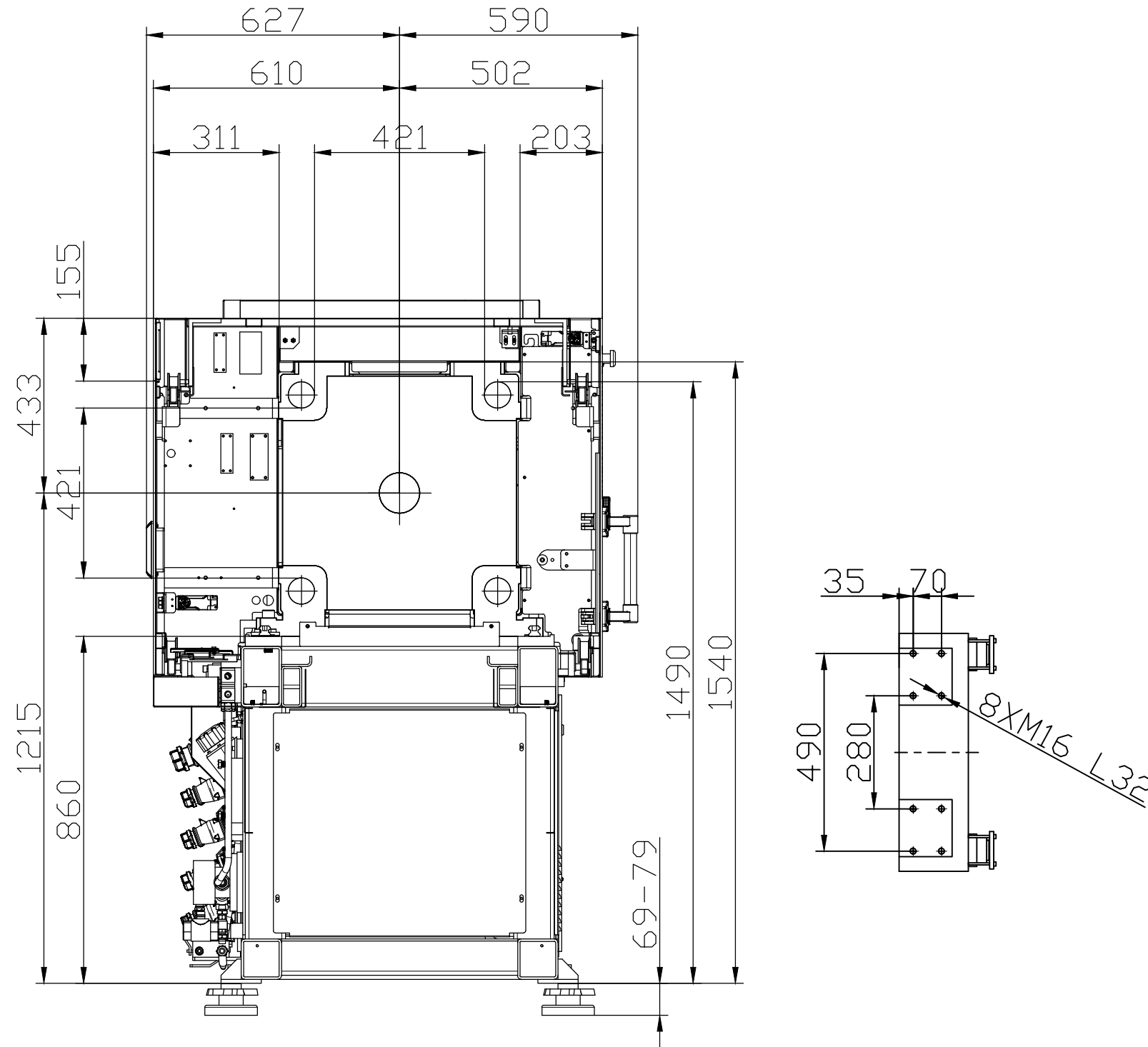
PLEASE READ:

The designs on this drawing were validated using machine manufacturer's drawings and/or information supplied by Absolute or the customer. It is the responsibility of the customer to review and confirm that all dimensions are consistent with the application intended and in accordance with the facility requirements for space, part clearance, overhead clearance, or any other interference. By signing this document, the customer accepts full responsibility for this design and application.

Customer:

Customer Approval:
Authorized Signature

Notes:



Absolute Haitian Corporation
 33 Southgate St. Worcester, MA
 T:+1 508-792-4305
 www.absolutehaitian.com

Title: ZE V 900 Robot Mounting Drawing

Machine Model: ZE V 900
 Machine Serial Number:
 Machine Tonnage:

Sheet: 1 of 1

Drawn By: Harry Date: 4/9/2024
 Chkd By: LEON XIE Date: 4/9/2024

Revision Date: Drawing #: Robot Mounting

Rev #: 1
 Rev #: 2
 Rev #: 3
 Rev #: 4
 Rev #: 5

NOT TO SCALE Size: 11 X 17 "B"

Units: mm / [in]
 Material:
 Part:
 Part:
 Part:
 Part:

PLEASE READ:

The designs on this drawing were validated using machine manufacturer's drawings and/or information supplied by Absolute or the customer. It is the responsibility of the customer to review and confirm that all dimensions are consistent with the application intended and in accordance with the facility requirements for space, part clearance, overhead clearance, or any other interference. By signing this document, the customer accepts full responsibility for this design and application.

Customer:

Customer Approval:
 Authorized Signature

Notes: