

# Specification



## ZE13800V-5200

ZERES 5 Series: Electric with Integrated Hydraulics



Clamping Unit		ZE13800 V
Clamping Force	kN	13800
	US Tons	1551
Mold Opening Stroke	mm	1500
	in.	59.06
Minimum Mold Height	mm	650
	in.	25.59
Maximum Mold Height	mm	1300
	in.	51.18
Maximum Daylight	mm	2800
	in.	110.24
Distance Between Tie-Bars (HXV)	mm	1550x1450
	in.	61.02x57.09
Platen Dimensions (HXV)	mm	2150x2050
	in.	84.65x80.71
Minimum Mold Size	mm	1030x970
	in.	40.55x38.19
Ejector Stroke	mm	250
	in.	9.84
Ejector Force	kN	300
	US Tons	34

# Specification



## ZE13800V-5200

ZERES 5 Series: Electric with Integrated Hydraulics

Injection Unit		5200		
Screw & Barrel Designation		A	B	C
Screw Diameter	mm	80	90	100
	in.	3.15	3.54	3.94
Screw L/D Ratio	L/D	24.8	22	19.8
Injection Volume (Theoretical)	cm <sup>3</sup>	2261	2862	3534
	cu.in.	137.97	174.65	215.66
Injection Weight (PS)	g	2058	2605	3216
	oz.	72.59	91.89	113.44
Injection Pressure	MPa	227	180	145
	psi	32924	26107	21030
Holding Pressure	MPa	204	162	131
	psi	29588	23496	19000
Screw Speed	rpm	190	190	190
Plasticizing Rate (GPPS)	g/s	85	107	131
	oz./s	3.00	3.77	4.62
Nozzle Contact Force	kN	85	85	85
	US Tons	10	10	10
Injection Unit		5200		
Injection Speed	mm/s	160		
	in./s	6.3		
Injection Rate (PS)	g/s	702	889	1097
	oz./s	24.76	31.36	38.70

# Specification



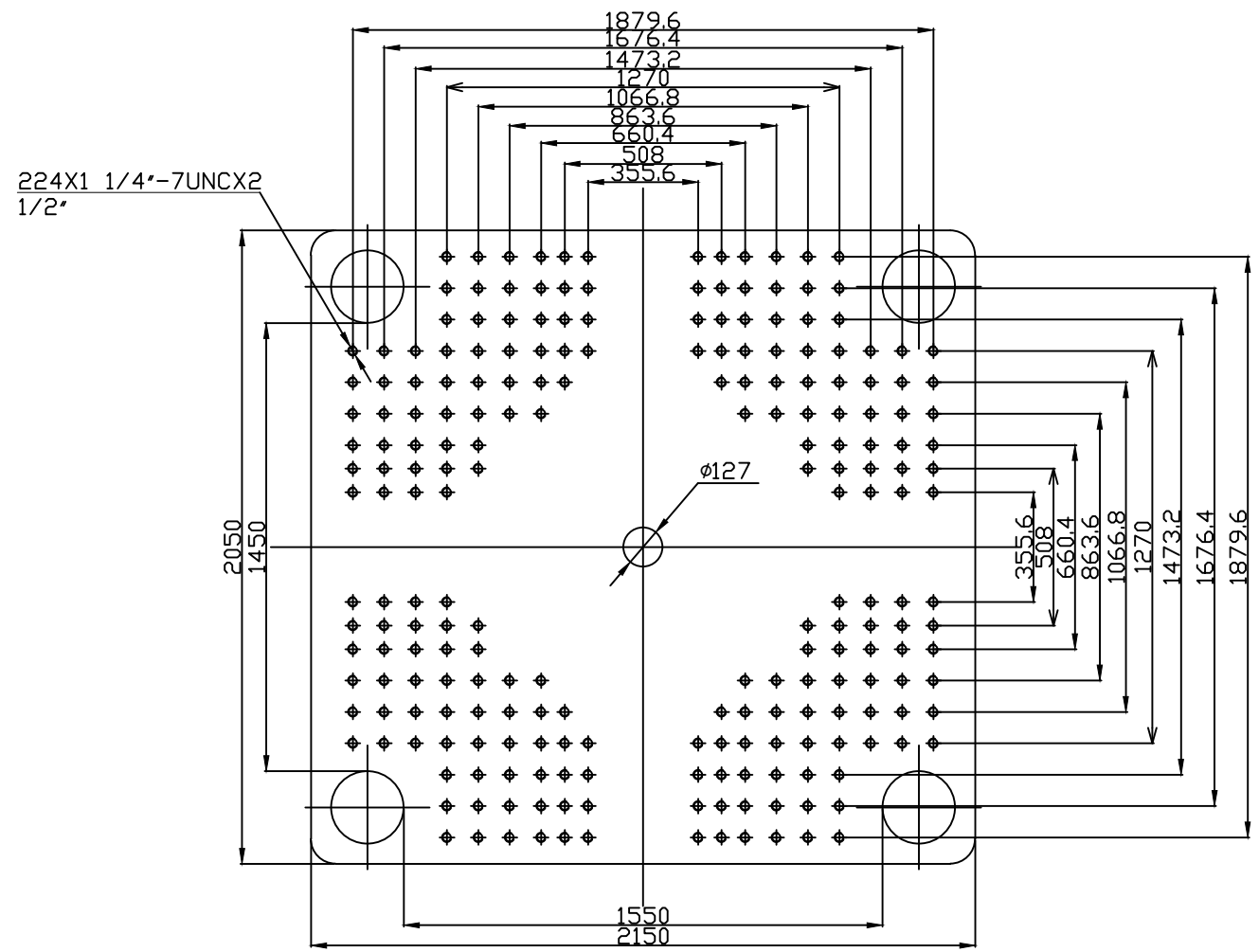
## ZE13800V-5200

ZERES 5 Series: Electric with Integrated Hydraulics

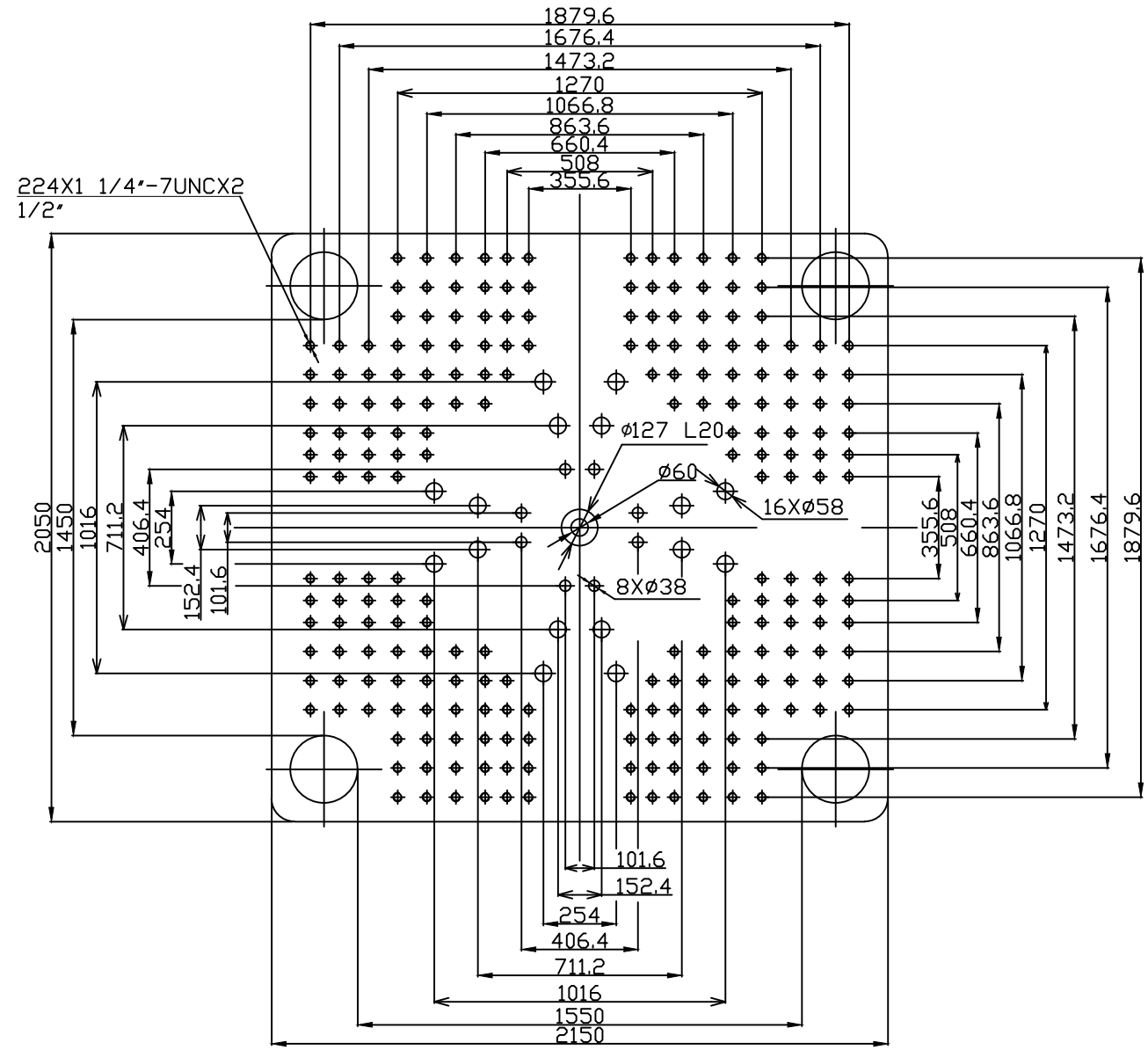
Other		
Connection Power	kW/A	98/164
Heating Power	kW	54.3
Machine Dimension	m	12.72x3.31x3.05
	in.	501x130x120
Machine Weight	t	91.6
	lbs.	201943
Hopper Capacity	l	100
	gal	26
Oil Pressure	MPa	21
	psi	3046
Oil Flow	l/min	333
	gal/min	88
Oil Tank	l	506
	gal	134

**\*NOTE:**

1. Machine dimensions and weights are based on the international standard configuration and are for reference only. Any options or country specific requirements will affect this. Contact Absolute Haitian service department for machine specific information.
2. Power requirements are based on the international standard configuration and are for reference only. Any options or country specific requirements will affect this. Contact Absolute Haitian service department for machine specific information.



Fixed Platen



Moving Platen



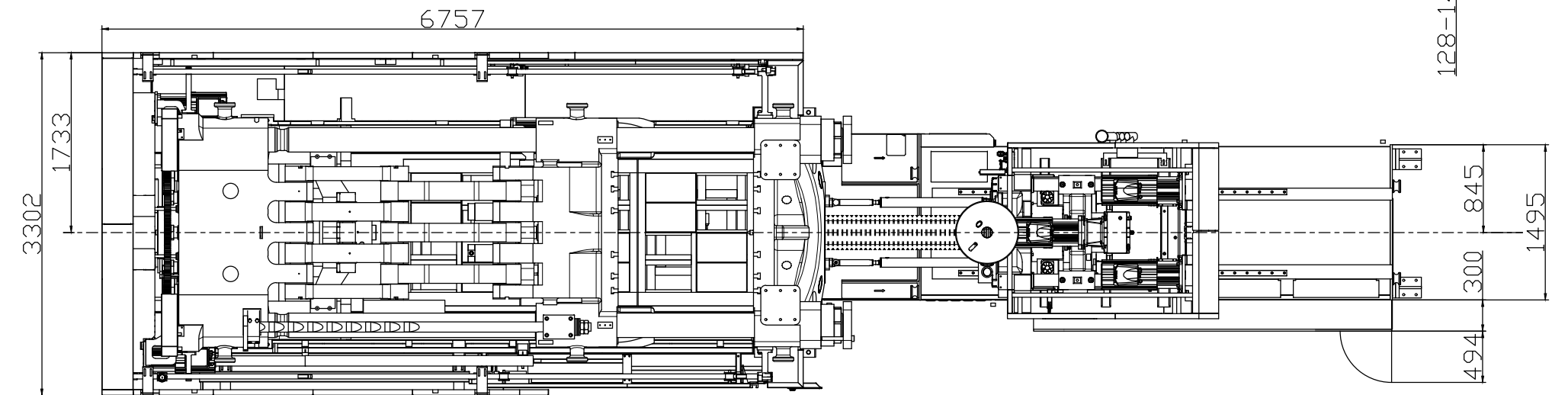
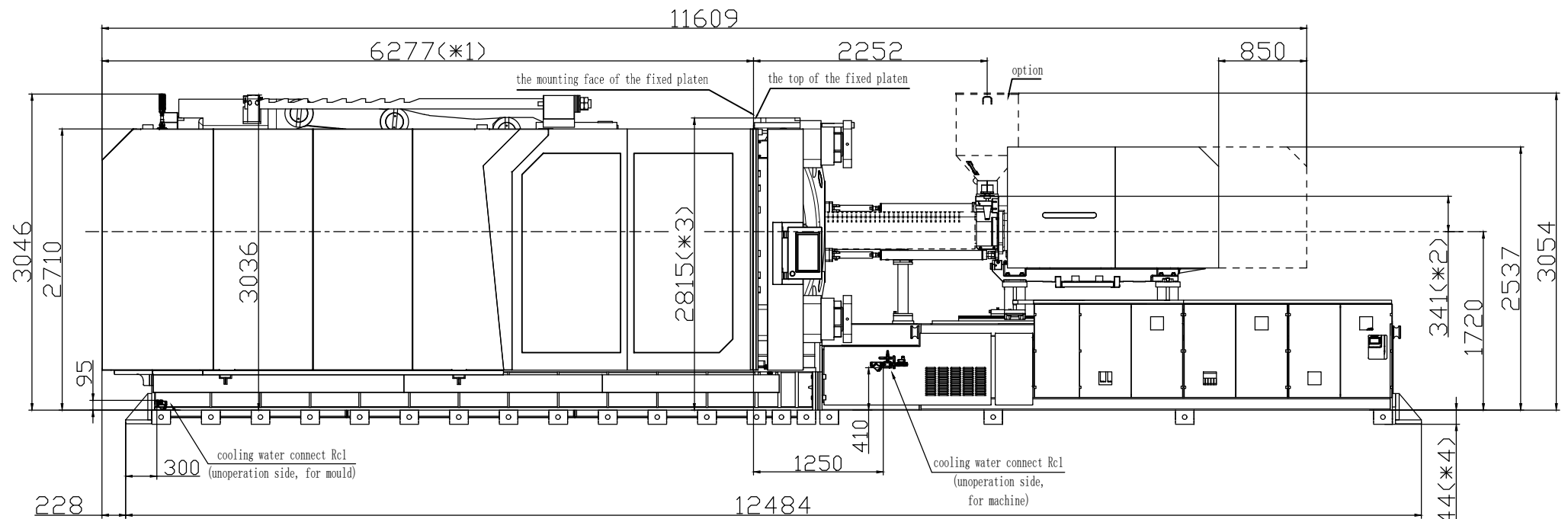
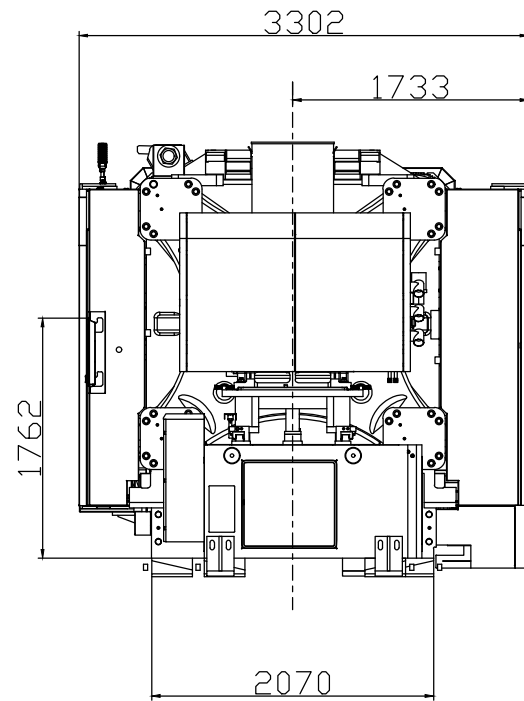
Absolute Haitian Corporation  
33 Southgate St. Worcester, MA  
T: +1 508-792-4305  
www.absolutehaitian.com

Title: ZE/VEV 13800 Fixed & Moving Platens Drawing			Sheet: 1 of 1	
Machine Model: ZE/VEV 13800			Drawn By: Harry	Date: 1/9/2024
Machine Serial Number:			Chkd By: LEON XIE	Date: 1/9/2024
Machine Tonnage:			NOT TO SCALE	Size: 11 X 17 "B"
Revision	Date:	Drawing #:	Units: mm / [in]	
Rev #: 1				
Rev #: 2			Material:	
Rev #: 3			Part:	
Rev #: 4			Part:	
Rev #: 5			Part:	

PLEASE READ:  
The designs on this drawing were validated using machine manufacturer's drawings and/or information supplied by Absolute or the customer. It is the responsibility of the customer to review and confirm that all dimensions are consistent with the application intended and in accordance with the facility requirements for space, part clearance, overhead clearance, or any other interference. By signing this document, the customer accepts full responsibility for this design and application.

Customer: \_\_\_\_\_ Customer Approval: \_\_\_\_\_  
Authorized Signature

Notes:



- \*1 To the mounting face of the fixed platen
- \*2 To the face of Hopper fixing platform
- \*3 To the top of the fixed platen
- \*4 Vibration dumping support



Absolute Haitian Corporation  
 33 Southgate St. Worcester, MA  
 T: +1 508-792-4305  
 www.absolutehaitian.com

Title: ZE V 13800-5200 Layout Drawing

Machine Model: ZE V 13800-5200  
 Machine Serial Number:  
 Machine Tonnage:

Sheet: 1 of 1

Drawn By: Harry Date: 3/22/2024  
 Chkd By: LEON XIE Date: 3/22/2024

Revision Date: Drawing #: Layout

Revision	Date:	Drawing #:	Layout
Rev #: 1			
Rev #: 2			
Rev #: 3			
Rev #: 4			
Rev #: 5			

NOT TO SCALE Size: 11 X 17 "B"

Units: mm / [in]

Material:  
 Part:  
 Part:  
 Part:  
 Part:

PLEASE READ:

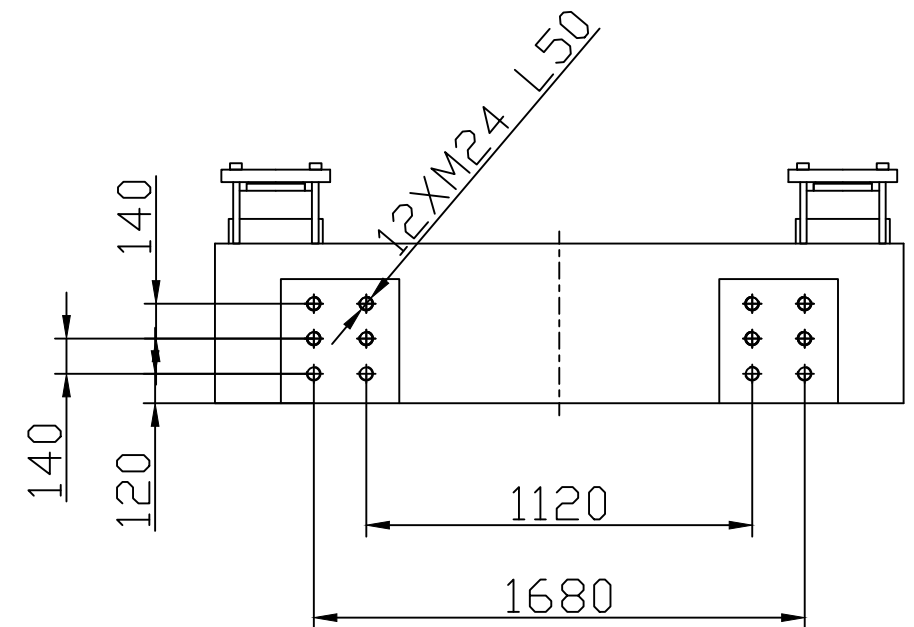
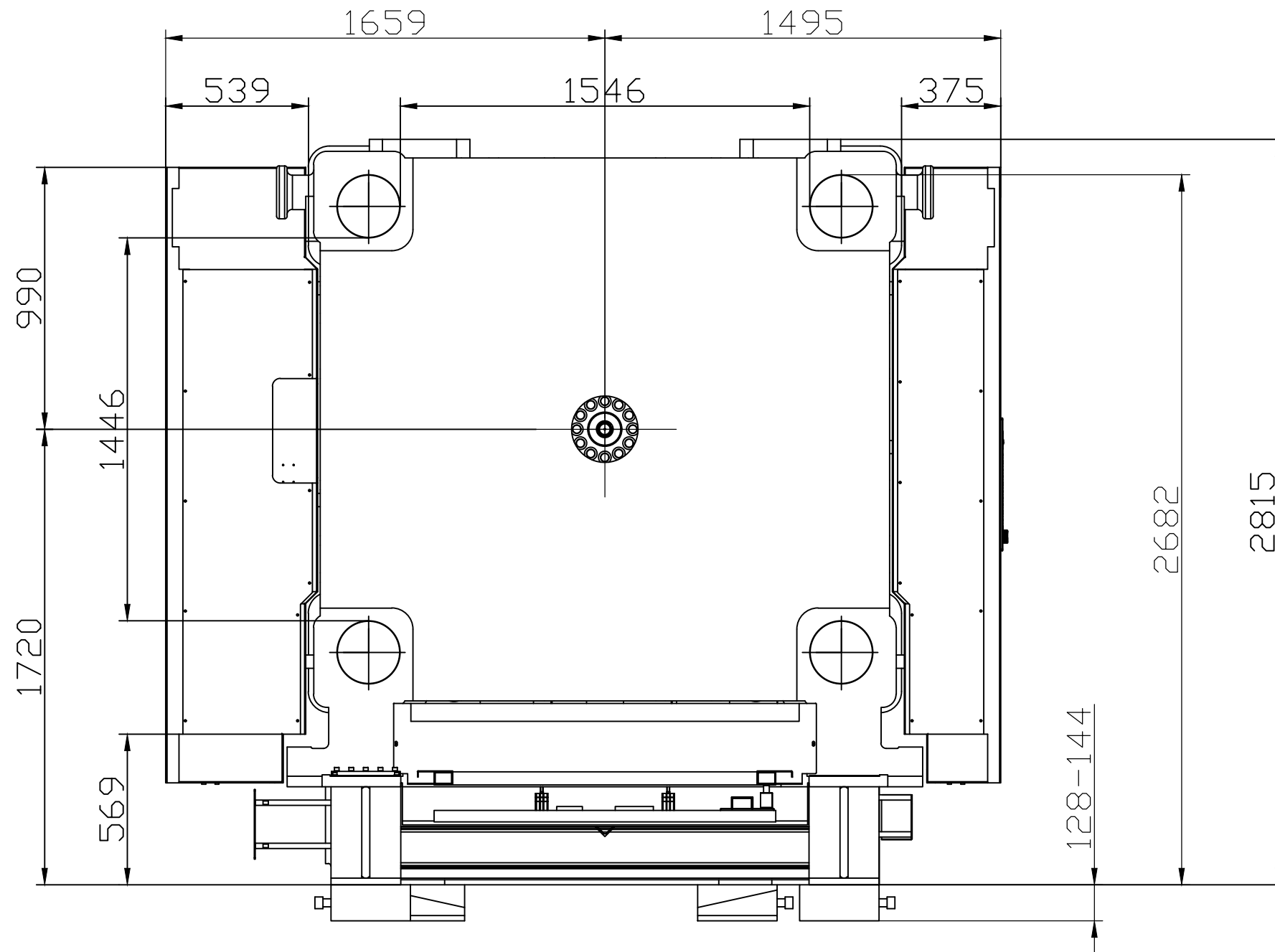
The designs on this drawing were validated using machine manufacturer's drawings and/or information supplied by Absolute or the customer. It is the responsibility of the customer to review and confirm that all dimensions are consistent with the application intended and in accordance with the facility requirements for space, part clearance, overhead clearance, or any other interference. By signing this document, the customer accepts full responsibility for this design and application.

Customer:

Customer Approval:

Authorized Signature

Notes:



Absolute Haitian Corporation  
33 Southgate St. Worcester, MA  
T: +1 508-792-4305  
www.absolutehaitian.com

Title: ZE V 13800 Robot Mounting Drawing

Machine Model: ZE V 13800  
Machine Serial Number:  
Machine Tonnage:

Sheet: 1 of 1

Drawn By: Harry Date: 4/9/2024  
Chkd By: LEON XIE Date: 4/9/2024

Revision Date: Drawing #: Robot Mounting

Rev #: 1  
Rev #: 2  
Rev #: 3  
Rev #: 4  
Rev #: 5

NOT TO SCALE Size: 11 X 17 "B"

Units: mm / [in]  
Material:  
Part:  
Part:  
Part:  
Part:

PLEASE READ:

The designs on this drawing were validated using machine manufacturer's drawings and/or information supplied by Absolute or the customer. It is the responsibility of the customer to review and confirm that all dimensions are consistent with the application intended and in accordance with the facility requirements for space, part clearance, overhead clearance, or any other interference. By signing this document, the customer accepts full responsibility for this design and application.

Customer:

Customer Approval:  
Authorized Signature

Notes: