

# Specification



## JU21000V-22500

JUPITER 5 Series: Two-Platen Servo-Hydraulic



Clamping Unit		JU21000V
Clamping Force	kN	21000
	US Tons	2360
Mold Opening Stroke (Min/Max)	mm	2700/1800
	in.	106.3/70.87
Minimum Mold Height	mm	800
	in.	31.5
Maximum Mold Height	mm	1700
	in.	66.93
Maximum Daylight	mm	3500
	in.	137.8
Distance Between Tie-Bars (HXV)	mm	1920×1480
	in.	75.59×58.27
Platen Dimensions (HXV)	mm	2660×2220
	in.	104.72×87.4
Ejector Stroke	mm	450
	in.	17.72
Ejector Force	kN	450
	US Tons	51
Maximum Mold Weight*	t	50
	lbs.	110231

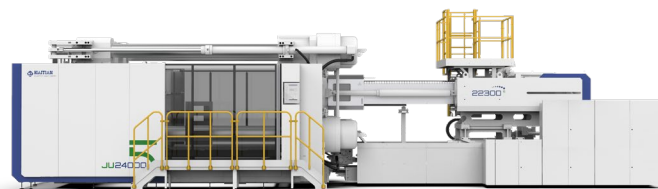
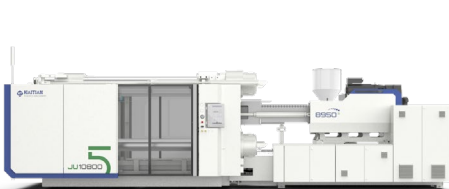
# Specification



## JU21000V-22500

JUPITER 5 Series: Two-Platen Servo-Hydraulic

Injection Unit		22500			
Screw & Barrel Designation		A	B	C	D
Screw Diameter	mm	140	150	160	170
	in.	5.51	5.91	6.30	6.69
Screw L/D Ratio	L/D	24	22.4	21	19.8
Injection Volume (theoretical)	cm <sup>3</sup>	10467	12016	13672	15434
	cu.in.	638.74	733.26	834.32	941.84
Injection Weight (PS)	g	9525	10935	12441	14045
	oz.	335.98	385.72	438.84	495.42
Injection Rate (PS)	g/s	1352	1552	1766	1994
	oz./s	47.69	54.75	62.29	70.34
Injection Pressure	MPa	185	161	141	125
	psi	26832	23351	20450	18130
Injection Pressure (max)*	MPa	211	184	161	143
	psi	30603	26687	23351	20740
Plasticizing Rate (GPPS)	g/s	155	176	196	222
	oz./s	5.47	6.21	6.91	7.83
Plasticizing Rate (HDPE)	g/s	243	294	303	334
	oz./s	8.57	10.37	10.69	11.78
Screw Speed	rpm	85	85	85	85



# Specification



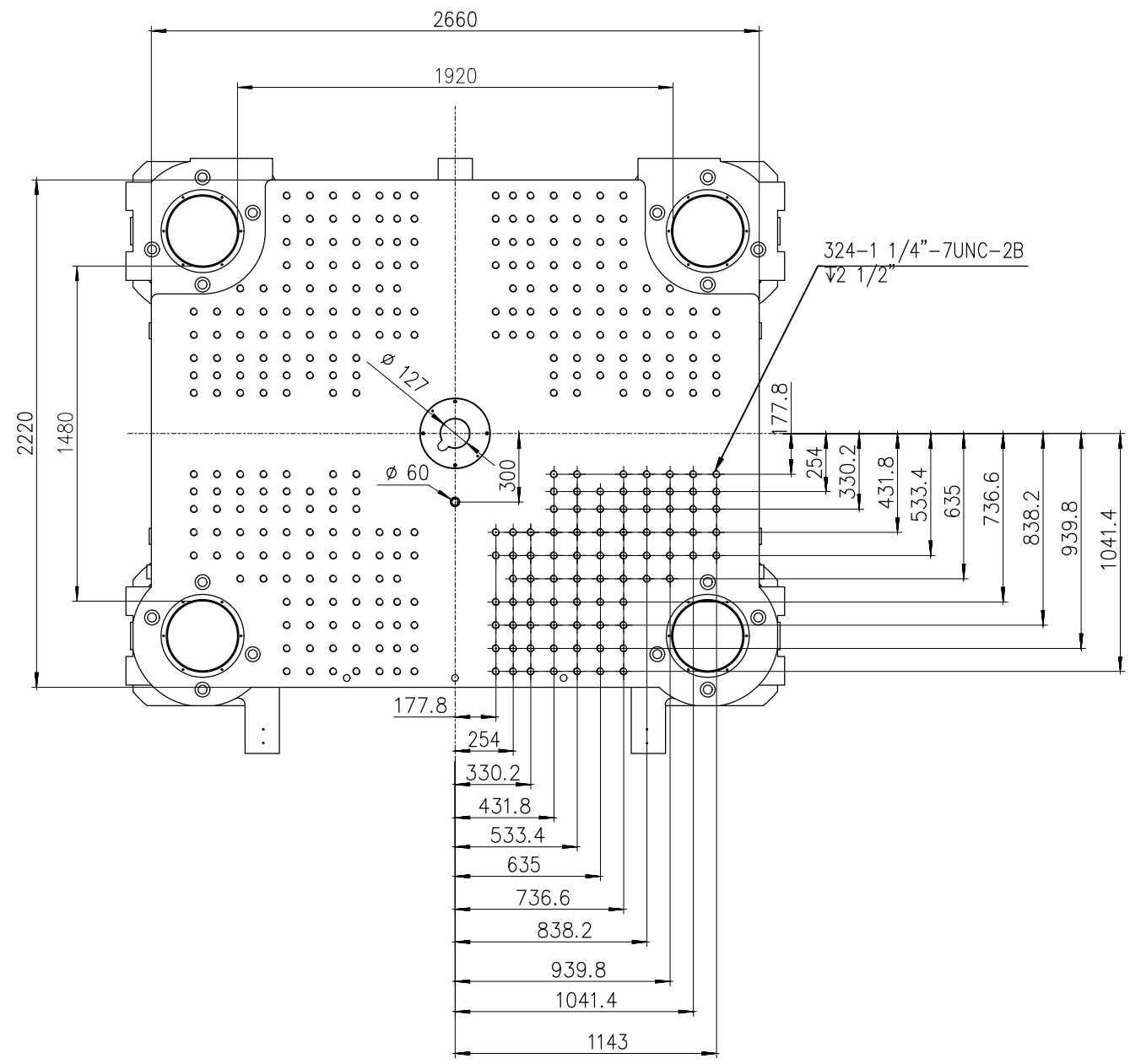
## JU21000V-22500

JUPITER 5 Series: Two-Platen Servo-Hydraulic

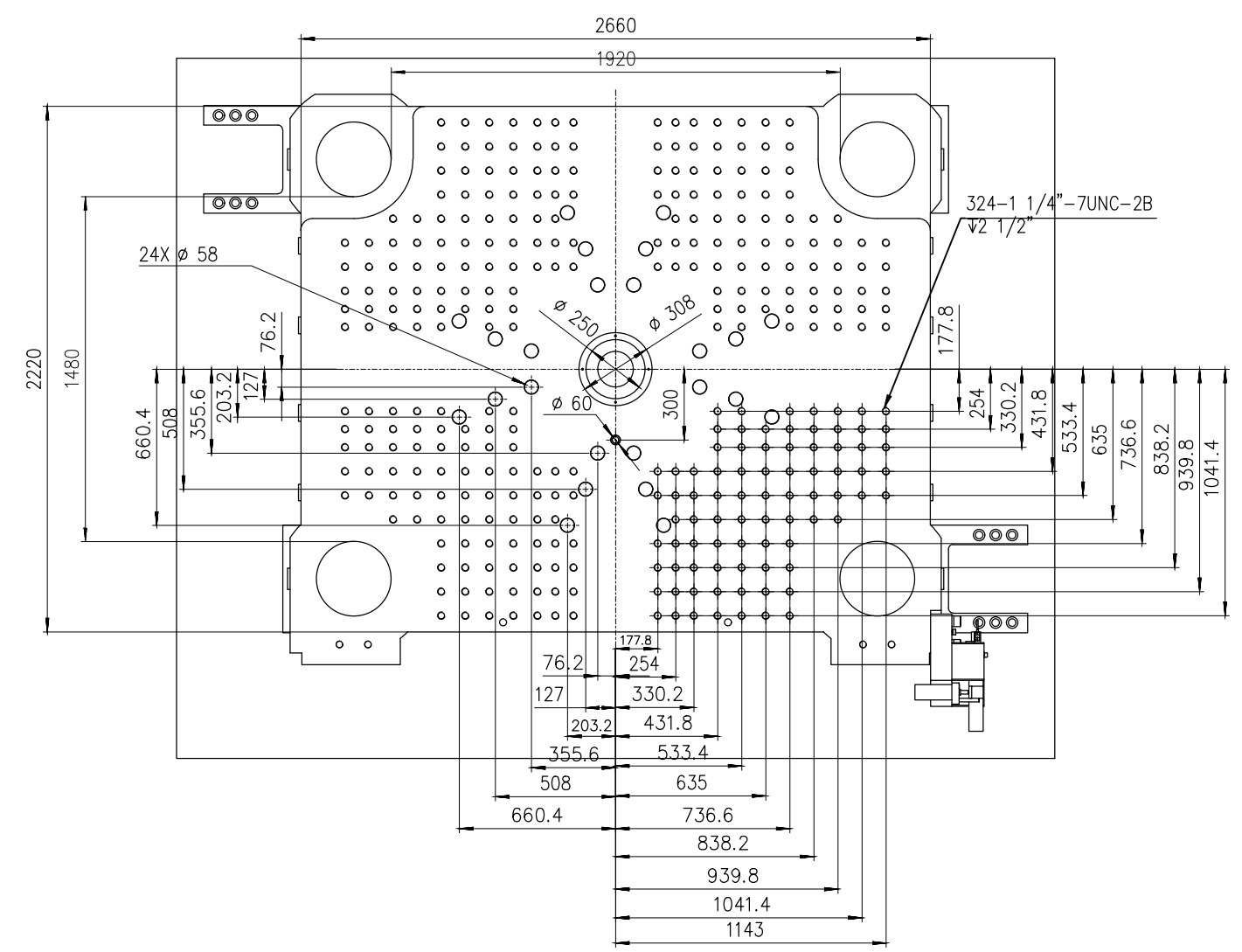
Other		
Pump Motor Power	kW	205
Heater Power	kW	137
Machine Dimension (LxWxH)	m	13.00x5.97x4.79
	in.	512x235x189
Machine Weight	t	102
	lbs.	224872
Hopper Capacity	kg	400
	lbs.	882
Oil Tank	l	1670
	gal	441

\*NOTE:

1. Injection Pressure (max) uses the machine's regeneration oil circuit to increase the injection pressure. This function will reduce injection control and repeatability. The standard "Injection Pressure" specification is the maximum injection pressure in a normal operating mode.
2. Moving platen max mold weight is 2/3 of total max mold weight.
3. Electric screw drive (screw rotate) is standard for injection units under 11500. For injection units 11500 and above electric screw drive is optional.
4. Machine dimensions and weights are based on the international standard configuration and are for reference only. Any options or country specific requirements will affect this. Contact Absolute Haitian service department for machine specific information.
5. Power requirements are based on the international standard configuration and are for reference only. Any options or country specific requirements will affect this. Contact Absolute Haitian service department for machine specific information.



Fixed Platen



Moving Platen



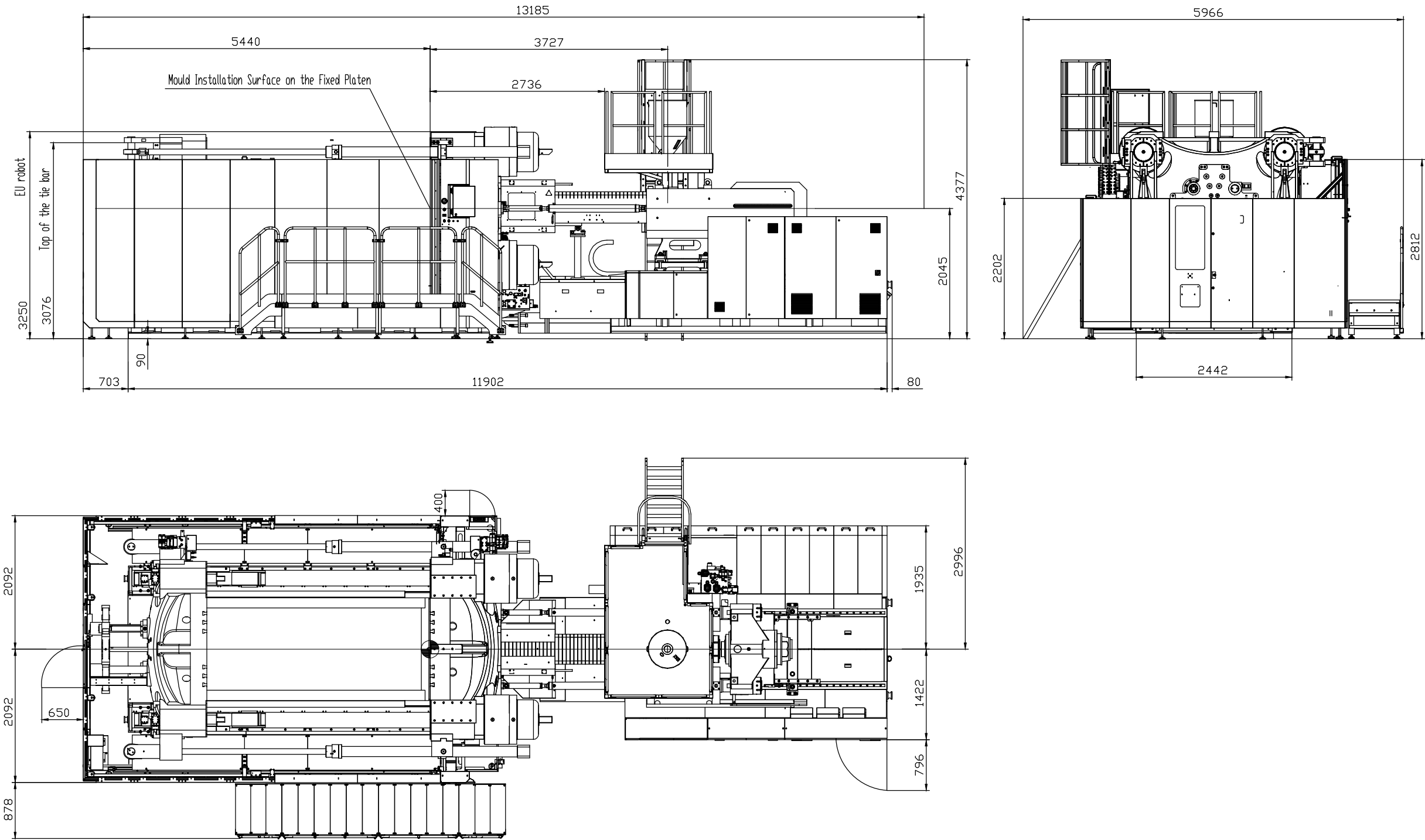
Absolute Haitian Corporation  
 33 Southgate St. Worcester, MA  
 T:+1 508-792-4305  
 www.absolutehaitian.com

<b>Title: JUV 21000 Fixed &amp; Moving Platens Drawing</b>			<b>Sheet: 1 of 1</b>	
<b>Machine Model: JUV 21000</b>			<b>Drawn By: Harry</b>	<b>Date: 1/9/2024</b>
<b>Machine Serial Number:</b>			<b>Chkd By: LEON XIE</b>	<b>Date: 1/9/2024</b>
<b>Machine Tonnage:</b>			<b>NOT TO SCALE</b>	<b>Size: 11 X 17 "B"</b>
Revision	Date:	Drawing #:	Units: mm / [in]	
Rev #: 1				
Rev #: 2				
Rev #: 3			Material:	
Rev #: 4			Part:	
Rev #: 5			Part:	

**PLEASE READ:**  
 The designs on this drawing were validated using machine manufacturer's drawings and/or information supplied by Absolute or the customer. It is the responsibility of the customer to review and confirm that all dimensions are consistent with the application intended and in accordance with the facility requirements for space, part clearance, overhead clearance, or any other interference. By signing this document, the customer accepts full responsibility for this design and application.

**Customer:** \_\_\_\_\_ **Customer Approval:**  
 Authorized Signature

**Notes:**



Absolute Haitian Corporation  
 33 Southgate St. Worcester, MA  
 T: +1 508-792-4305  
 www.absolutehaitian.com

Title: JU V 21000-22500 Layout Drawing

Machine Model: JU V 21000-22500  
 Machine Serial Number:  
 Machine Tonnage:

Sheet: 1 of 1

Drawn By: Harry Date: 3/21/2024  
 Chkd By: LEON XIE Date: 3/21/2024

Revision	Date:	Drawing #: Layout
Rev #: 1		
Rev #: 2		
Rev #: 3		
Rev #: 4		
Rev #: 5		

NOT TO SCALE Size: 11 X 17 "B"

Units: mm / [in]

Material:  
 Part:  
 Part:  
 Part:  
 Part:

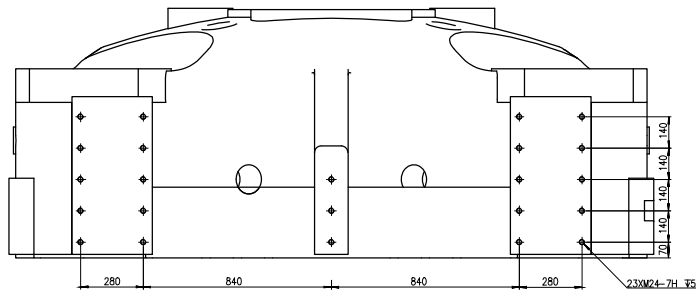
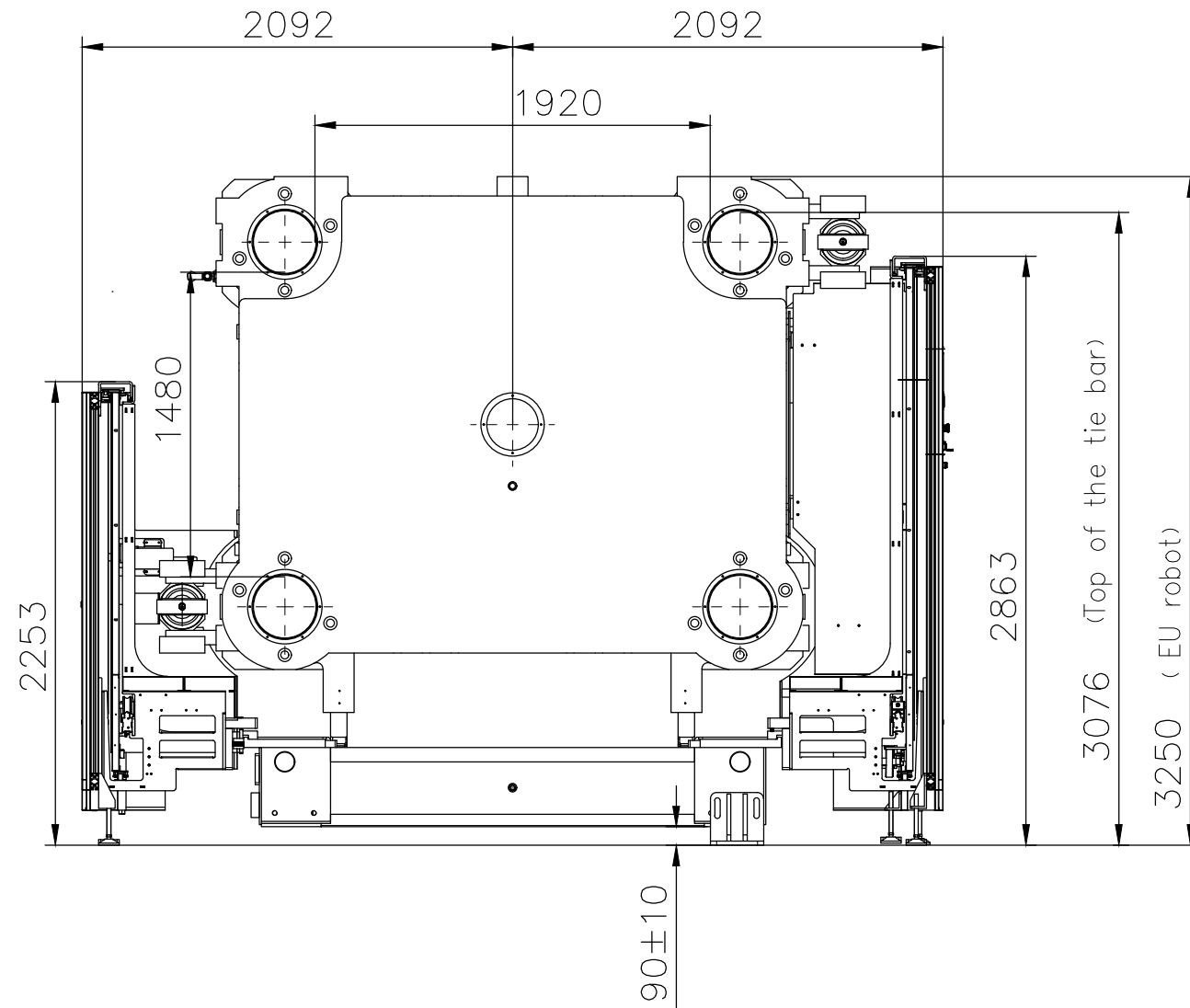
PLEASE READ:

The designs on this drawing were validated using machine manufacturer's drawings and/or information supplied by Absolute or the customer. It is the responsibility of the customer to review and confirm that all dimensions are consistent with the application intended and in accordance with the facility requirements for space, part clearance, overhead clearance, or any other interference. By signing this document, the customer accepts full responsibility for this design and application.

Customer:

Customer Approval:  
 Authorized Signature

Notes:



Absolute Haitian Corporation  
33 Southgate St. Worcester, MA  
T:+1 508-792-4305  
www.absolutehaitian.com

Title: JU V 21000 Robot Mounting Drawing

Machine Model: JU V 21000  
Machine Serial Number:  
Machine Tonnage:

Sheet: 1 of 1

Drawn By: Harry Date: 4/9/2024  
Chkd By: LEON XIE Date: 4/9/2024

Revision Date: Drawing #: Robot Mounting

NOT TO SCALE Size: 11 X 17 "B"

Rev #: 1  
Rev #: 2  
Rev #: 3  
Rev #: 4  
Rev #: 5

Units: mm / [in]  
Material:  
Part:  
Part:  
Part:  
Part:

PLEASE READ:

The designs on this drawing were validated using machine manufacturer's drawings and/or information supplied by Absolute or the customer. It is the responsibility of the customer to review and confirm that all dimensions are consistent with the application intended and in accordance with the facility requirements for space, part clearance, overhead clearance, or any other interference. By signing this document, the customer accepts full responsibility for this design and application.

Customer:

Customer Approval:  
Authorized Signature

Notes: