

Specification



JU16000V-17500

JUPITER 5 Series: Two-Platen Servo-Hydraulic



Clamping Unit		JU16000V
Clamping Force	kN	16000
	US Tons	1798
Mold Opening Stroke (Min/Max)	mm	2550/1700
	in.	100.39/66.93
Minimum Mold Height	mm	700
	in.	27.56
Maximum Mold Height	mm	1550
	in.	61.02
Maximum Daylight	mm	3250
	in.	127.95
Distance Between Tie-Bars (HXV)	mm	1570x1285
	in.	61.81x50.59
Platen Dimensions (HXV)	mm	2220x1950
	in.	87.4x76.77
Ejector Stroke	mm	400
	in.	15.75
Ejector Force	kN	330
	US Tons	37
Maximum Mold Weight*	t	33
	lbs.	72753

Specification



JU16000V-17500

JUPITER 5 Series: Two-Platen Servo-Hydraulic

Injection Unit		17500		
Screw & Barrel Designation		A	B	C
Screw Diameter	mm	130	140	150
	in.	5.12	5.51	5.91
Screw L/D Ratio	L/D	24	22.3	20.8
Injection Volume (theoretical)	cm ³	8362	9698	11133
	cu.in.	510.28	591.81	679.38
Injection Weight (PS)	g	7609	8825	10131
	oz.	268.40	311.29	357.36
Injection Rate (PS)	g/s	1281	1486	1705
	oz./s	45.19	52.42	60.14
Injection Pressure	MPa	185	160	139
	psi	26832	23206	20160
Injection Pressure (max)*	MPa	210	181	158
	psi	30458	26252	22916
Plasticizing Rate (GPPS)	g/s	168	192	220
	oz./s	5.93	6.77	7.76
Plasticizing Rate (HDPE)	g/s	252	283	336
	oz./s	8.89	9.98	11.85
Screw Speed	rpm	102	102	102



Specification



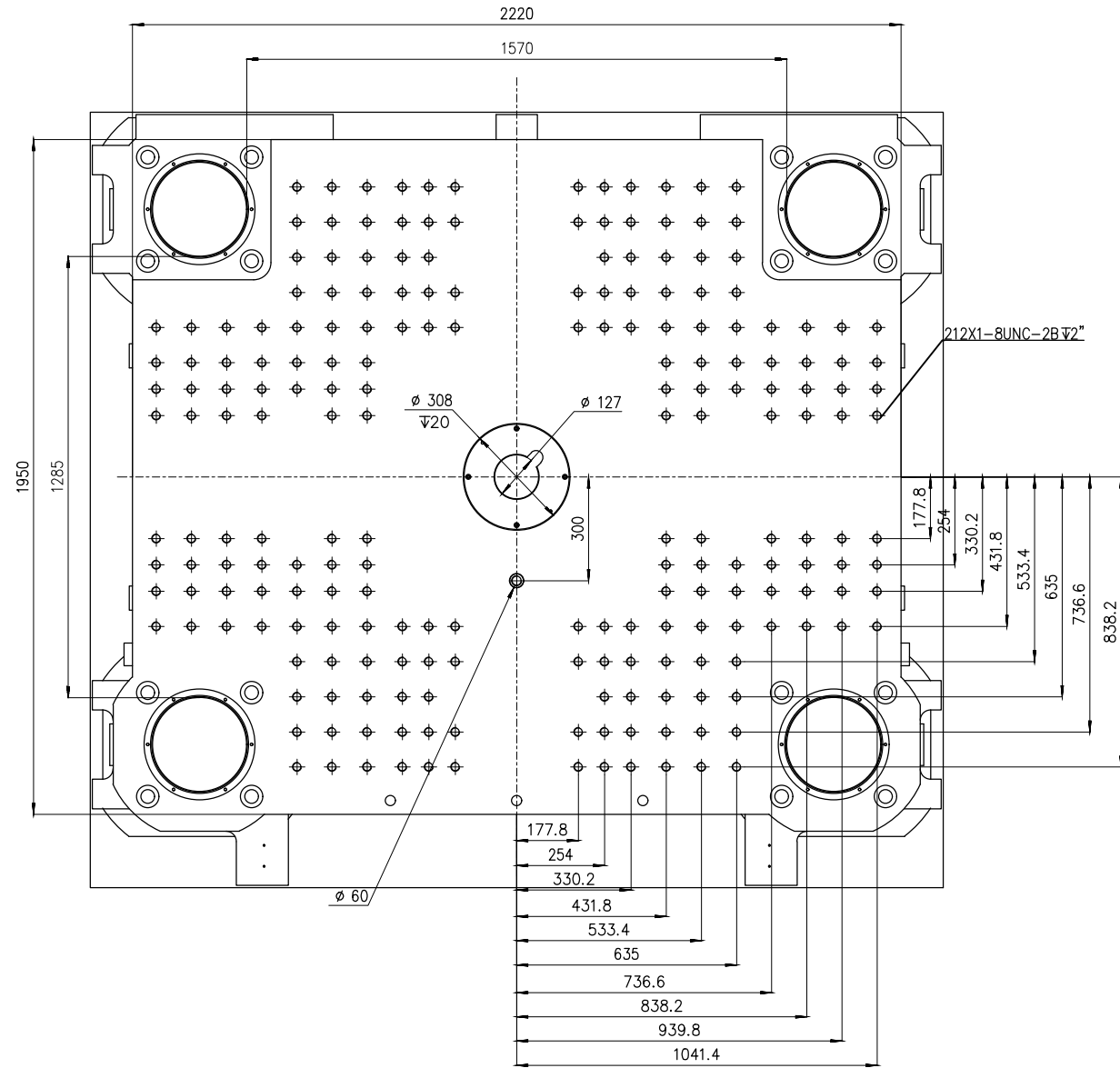
JU16000V-17500

JUPITER 5 Series: Two-Platen Servo-Hydraulic

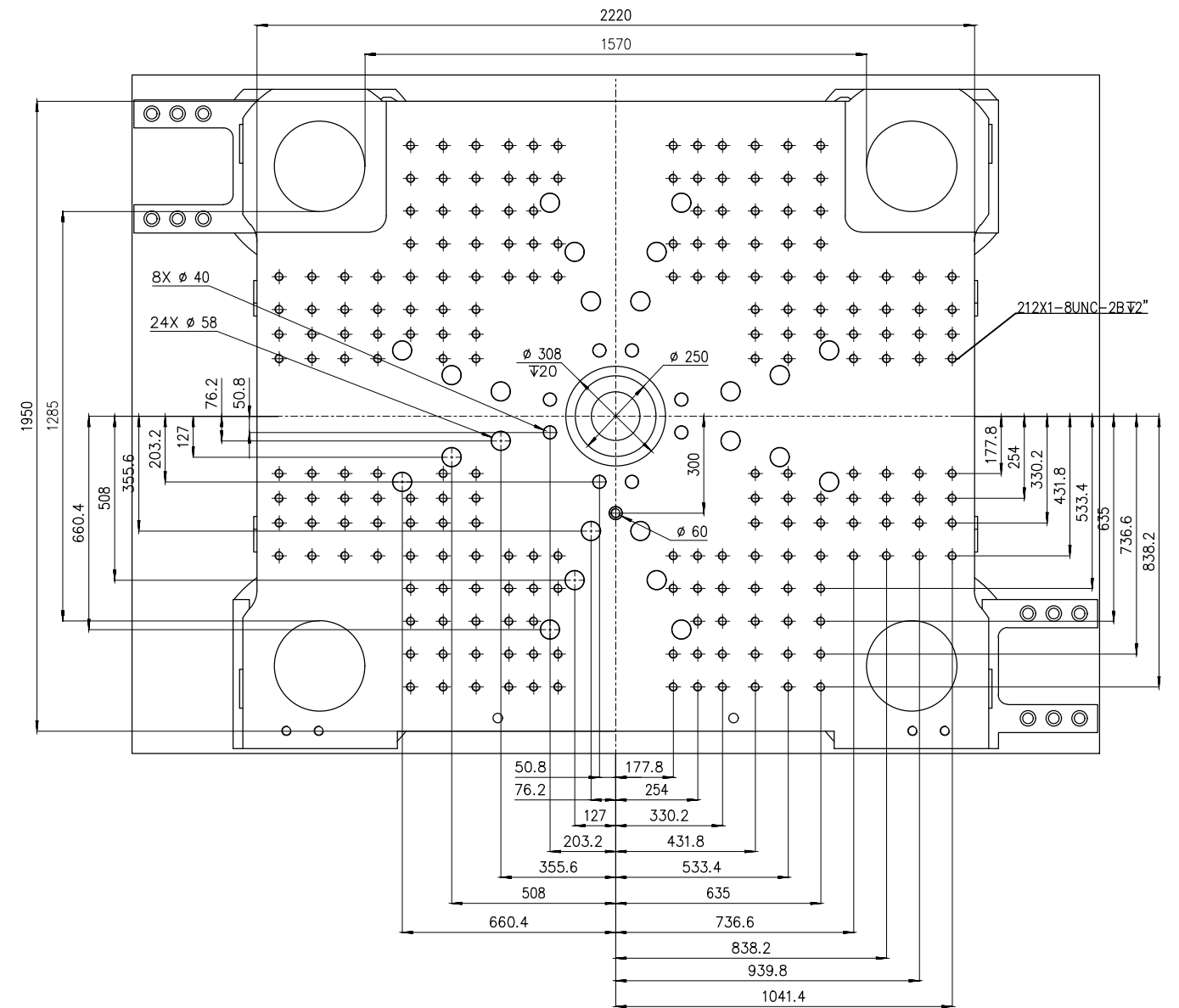
Other		
Pump Motor Power	kW	195
Heater Power	kW	123
Machine Dimension (LxWxH)	m	12.45x4.64x4.55
	in.	490x183x179
Machine Weight	t	76
	lbs.	167551
Hopper Capacity	kg	400
	lbs.	882
Oil Tank	l	1670
	gal	441

***NOTE:**

1. Injection Pressure (max) uses the machine's regeneration oil circuit to increase the injection pressure. This function will reduce injection control and repeatability. The standard "Injection Pressure" specification is the maximum injection pressure in a normal operating mode.
2. Moving platen max mold weight is 2/3 of total max mold weight.
3. Electric screw drive (screw rotate) is standard for injection units under 11500. For injection units 11500 and above electric screw drive is optional.
4. Machine dimensions and weights are based on the international standard configuration and are for reference only. Any options or country specific requirements will affect this. Contact Absolute Haitian service department for machine specific information.
5. Power requirements are based on the international standard configuration and are for reference only. Any options or country specific requirements will affect this. Contact Absolute Haitian service department for machine specific information.



Fixed Platen



Moving Platen



Absolute Haitian Corporation
33 Southgate St. Worcester, MA
T:+1 508-792-4305
www.absolutehaitian.com

Title: JUV 16000 Fixed & Moving Platens Drawing

Machine Model: JUV 16000
Machine Serial Number:
Machine Tonnage:

Sheet: 1 of 1

Drawn By: Harry Date: 1/9/2024
Chkd By: LEON XIE Date: 1/9/2024

Revision	Date:	Drawing #:	NOT TO SCALE	Size: 11 X 17 "B"
Rev #: 1				Units: mm / [in]
Rev #: 2				Material:
Rev #: 3				Part:
Rev #: 4				Part:
Rev #: 5				Part:

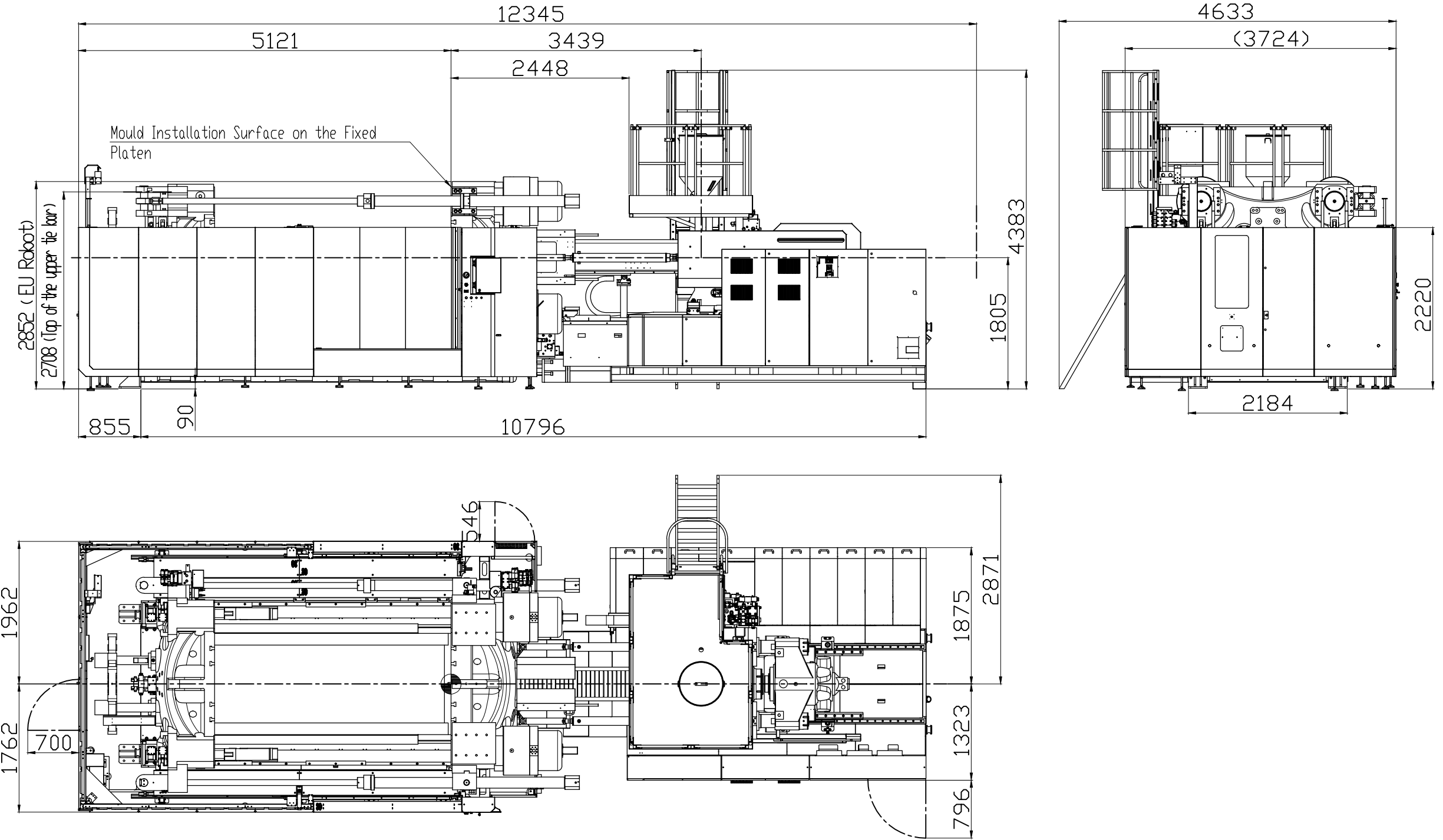
PLEASE READ:

The designs on this drawing were validated using machine manufacturer's drawings and/or information supplied by Absolute or the customer. It is the responsibility of the customer to review and confirm that all dimensions are consistent with the application intended and in accordance with the facility requirements for space, part clearance, overhead clearance, or any other interference. By signing this document, the customer accepts full responsibility for this design and application.

Customer:

Customer Approval:
Authorized Signature

Notes:



Absolute Haitian Corporation
 33 Southgate St. Worcester, MA
 T:+1 508-792-4305
 www.absolutehaitian.com

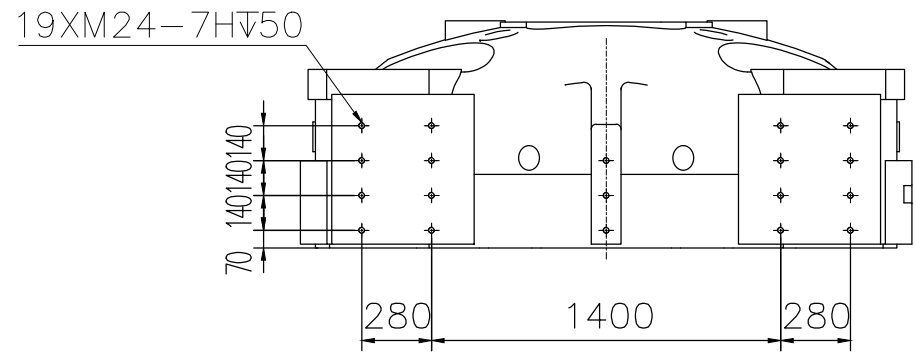
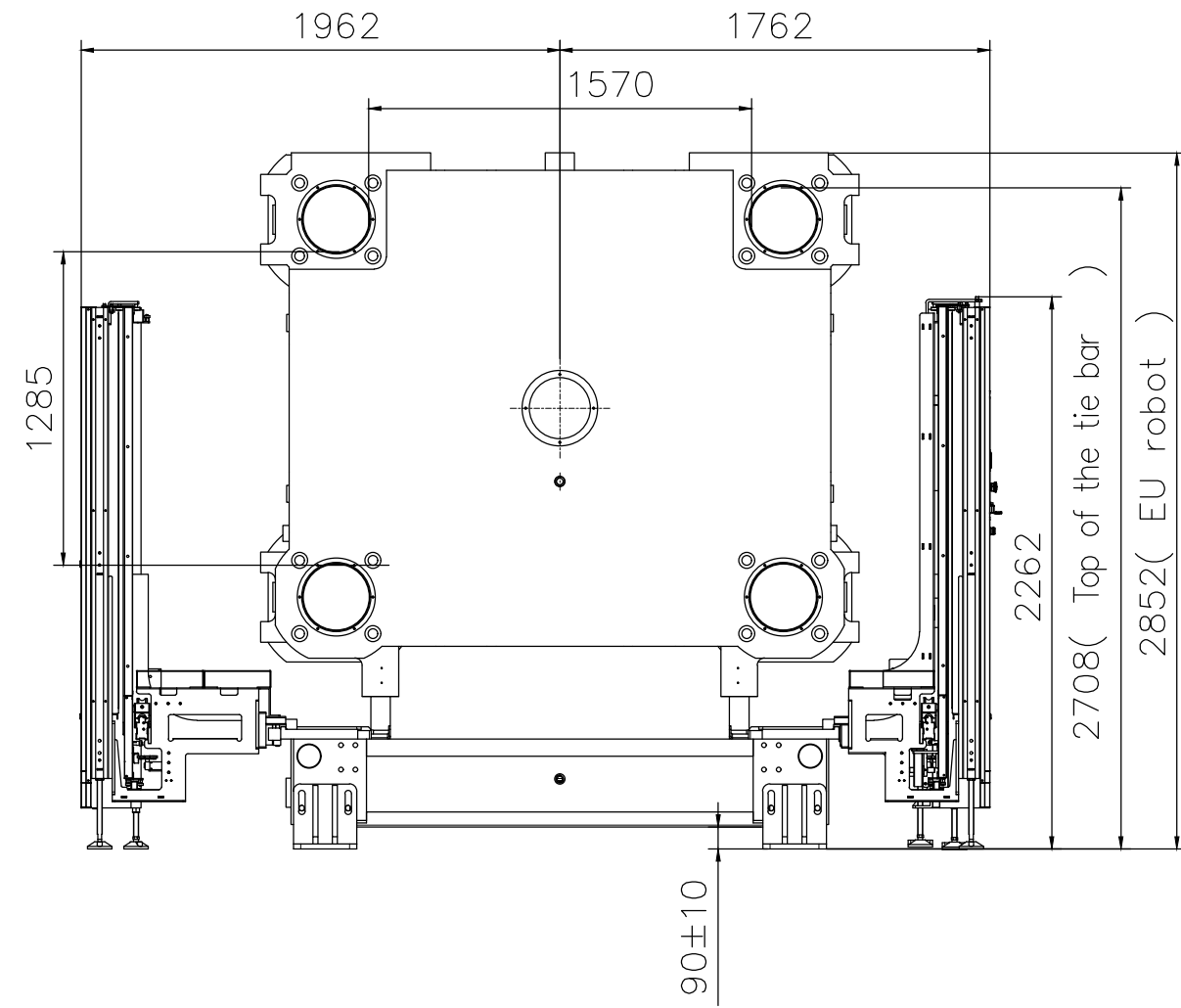
Title: JU V 16000-17500 Layout Drawing			Sheet: 1 of 1	
Machine Model: JU V 16000-17500			Drawn By: Harry	Date: 3/21/2024
Machine Serial Number:			Chkd By: LEON XIE	Date: 3/21/2024
Machine Tonnage:			NOT TO SCALE	Size: 11 X 17 "B"
Revision	Date:	Drawing #: Layout	Units: mm / [in]	
Rev #: 1			Material:	
Rev #: 2			Part:	
Rev #: 3			Part:	
Rev #: 4			Part:	
Rev #: 5			Part:	

PLEASE READ:
 The designs on this drawing were validated using machine manufacturer's drawings and/or information supplied by Absolute or the customer. It is the responsibility of the customer to review and confirm that all dimensions are consistent with the application intended and in accordance with the facility requirements for space, part clearance, overhead clearance, or any other interference. By signing this document, the customer accepts full responsibility for this design and application.

Customer: _____

Customer Approval:
 Authorized Signature

Notes:



Absolute Haitian Corporation
 33 Southgate St. Worcester, MA
 T:+1 508-792-4305
 www.absolutehaitian.com

Title: JU V 16000-17500 Robot Mounting Drawing			Sheet: 1 of 1	
Machine Model: JU V 16000-17500			Drawn By: Harry	Date: 4/9/2024
Machine Serial Number:			Chkd By: LEON XIE	Date: 4/9/2024
Machine Tonnage:			NOT TO SCALE	Size: 11 X 17 "B"
Revision	Date:	Drawing #: Robot Mounting	Units: mm / [in]	
Rev #: 1				
Rev #: 2				
Rev #: 3			Material:	
Rev #: 4			Part:	
Rev #: 5			Part:	

PLEASE READ:
 The designs on this drawing were validated using machine manufacturer's drawings and/or information supplied by Absolute or the customer. It is the responsibility of the customer to review and confirm that all dimensions are consistent with the application intended and in accordance with the facility requirements for space, part clearance, overhead clearance, or any other interference. By signing this document, the customer accepts full responsibility for this design and application.

Customer: _____ **Customer Approval:**
 Authorized Signature

Notes: