

Specification



ZE13800V-8700

ZERES 5 Series: Electric with Integrated Hydraulics



Clamping Unit		ZE13800 V
Clamping Force	kN	13800
	US Tons	1551
Mold Opening Stroke	mm	1500
	in.	59.06
Minimum Mold Height	mm	650
	in.	25.59
Maximum Mold Height	mm	1300
	in.	51.18
Maximum Daylight	mm	2800
	in.	110.24
Distance Between Tie-Bars (HXV)	mm	1550x1450
	in.	61.02x57.09
Platen Dimensions (HXV)	mm	2150x2050
	in.	84.65x80.71
Minimum Mold Size	mm	1030x970
	in.	40.55x38.19
Ejector Stroke	mm	250
	in.	9.84
Ejector Force	kN	300
	US Tons	34

Specification



ZE13800V-8700

ZERES 5 Series: Electric with Integrated Hydraulics

Injection Unit		8700		
Screw & Barrel Designation		A	B	C
Screw Diameter	mm	100	110	120
	in.	3.94	4.33	4.72
Screw L/D Ratio	L/D	24.2	22	20.2
Injection Volume (Theoretical)	cm ³	4005	4846	5767
	cu.in.	244.40	295.72	351.92
Injection Weight (PS)	g	3644	4410	5248
	oz.	128.54	155.56	185.12
Injection Pressure	MPa	218	180	151
	psi	31618	26107	21901
Holding Pressure	MPa	195	162	136
	psi	28282	23496	19725
Screw Speed	rpm	155	155	155
Plasticizing Rate (GPPS)	g/s	121	145	168
	oz./s	4.27	5.11	5.93
Nozzle Contact Force	kN	85	85	85
	US Tons	10	10	10
Injection Unit		8700		
Injection Speed	mm/s	150		
	in./s	5.91		
Injection Rate (PS)	g/s	1029	1245	1482
	oz./s	36.30	43.92	52.28

Specification



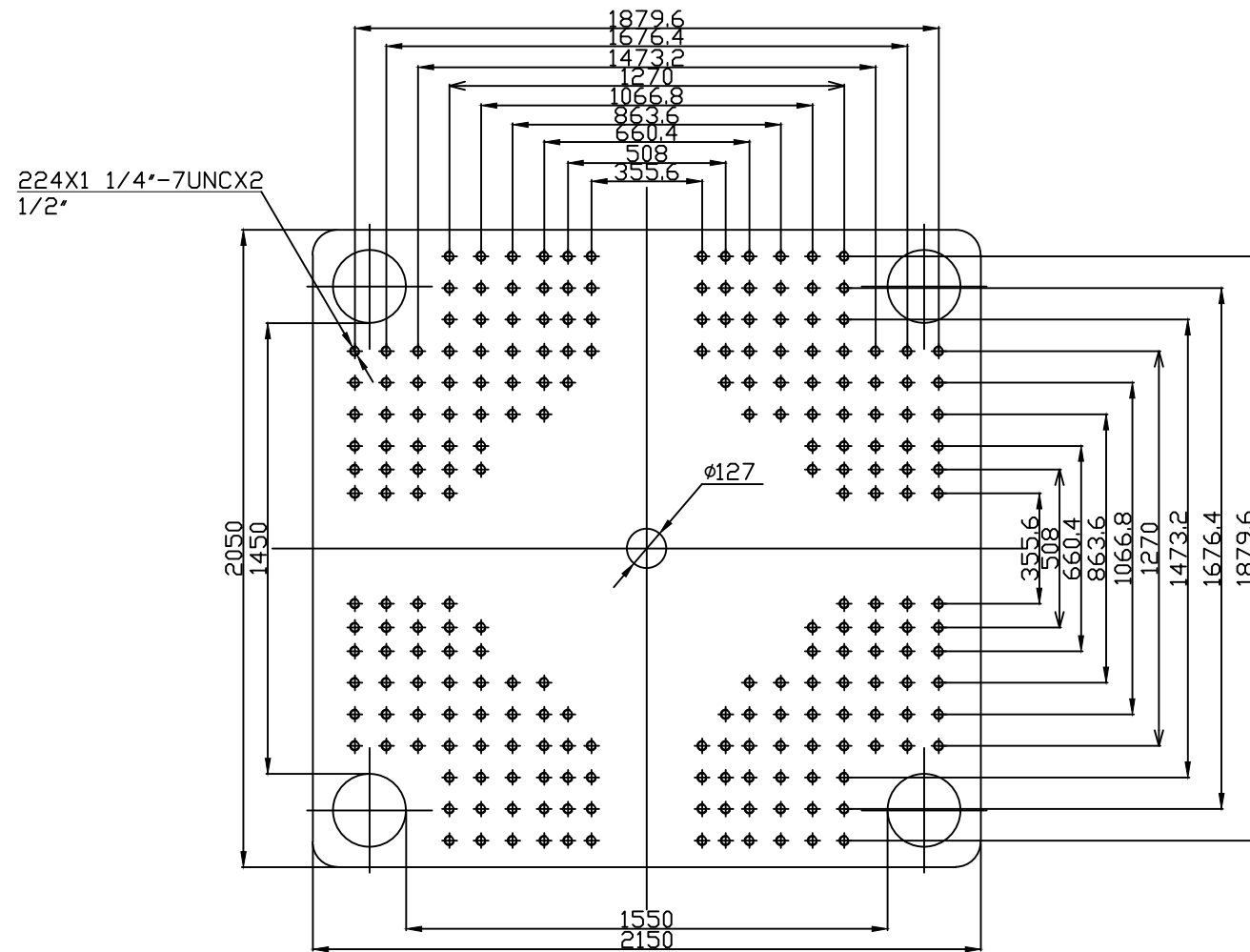
ZE13800V-8700

ZERES 5 Series: Electric with Integrated Hydraulics

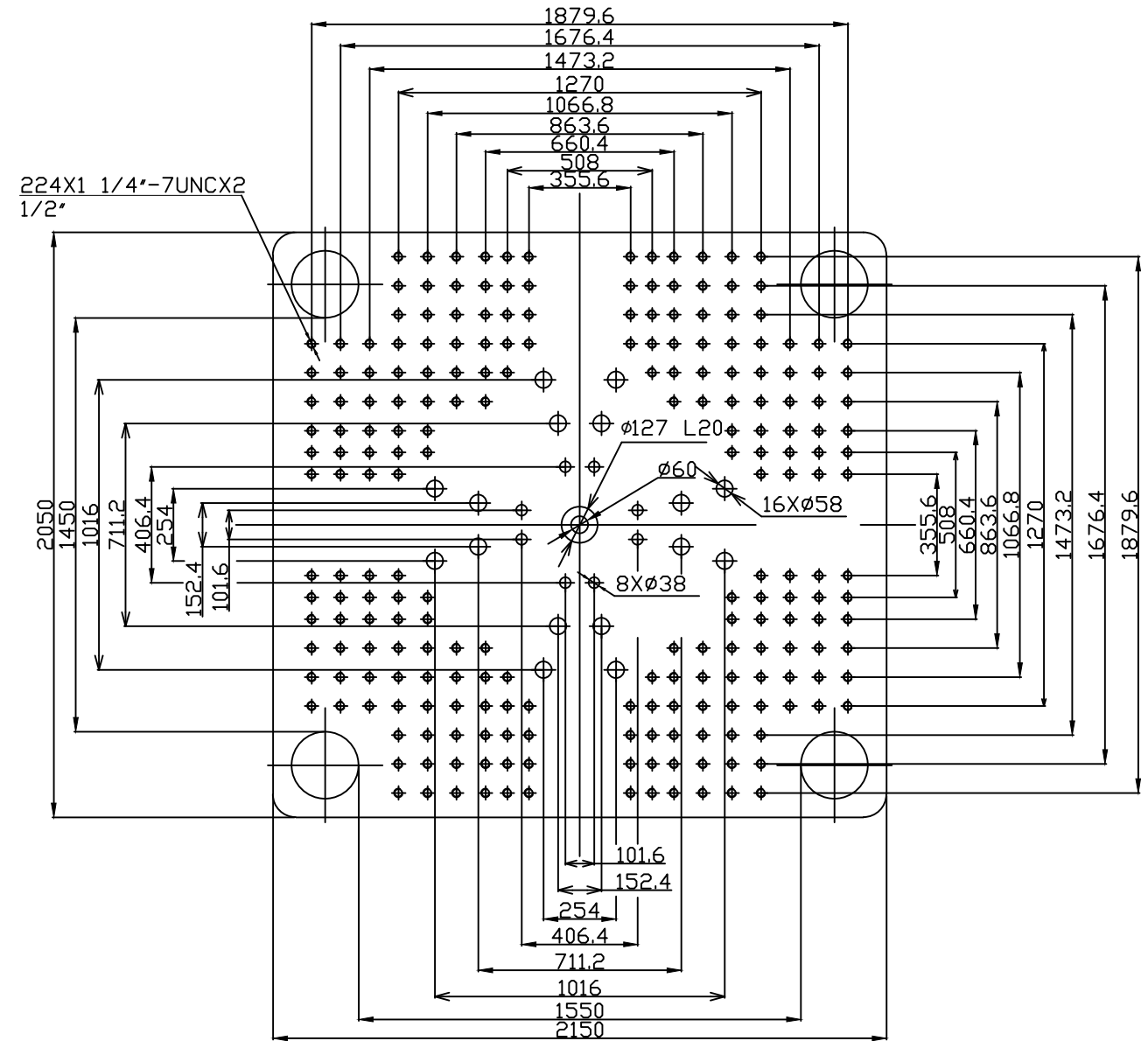
Other		
Connection Power	kW/A	151/254
Heating Power	kW	82.8
Machine Dimension	m	12.72x3.31x3.05
	in.	501x130x120
Machine Weight	t	94.9
	lbs.	209219
Hopper Capacity	l	200
	gal	53
Oil Pressure	MPa	21
	psi	3046
Oil Flow	l/min	333
	gal/min	88
Oil Tank	l	506
	gal	134

***NOTE:**

1. Machine dimensions and weights are based on the international standard configuration and are for reference only. Any options or country specific requirements will affect this. Contact Absolute Haitian service department for machine specific information.
2. Power requirements are based on the international standard configuration and are for reference only. Any options or country specific requirements will affect this. Contact Absolute Haitian service department for machine specific information.



Fixed Platen



Moving Platen



Absolute Haitian Corporation
33 Southgate St. Worcester, MA
T:+1 508-792-4305
www.absolutehaitian.com

Title: ZE/VEV 13800 Fixed & Moving Platens Drawing

Machine Model: ZE/VEV 13800
Machine Serial Number:
Machine Tonnage:

Sheet: 1 of 1

Drawn By: Harry Date: 1/9/2024
Chkd By: LEON XIE Date: 1/9/2024

Revision	Date:	Drawing #:
Rev #: 1		
Rev #: 2		
Rev #: 3		
Rev #: 4		
Rev #: 5		

NOT TO SCALE Size: 11 X 17 "B"

Units: mm / [in]
Material:
Part:
Part:
Part:
Part:

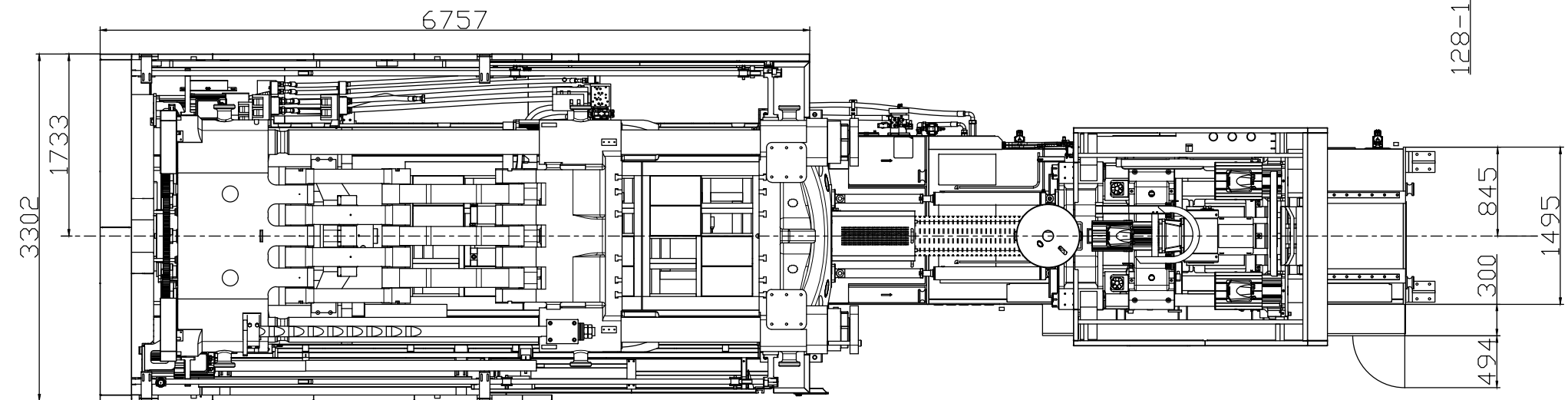
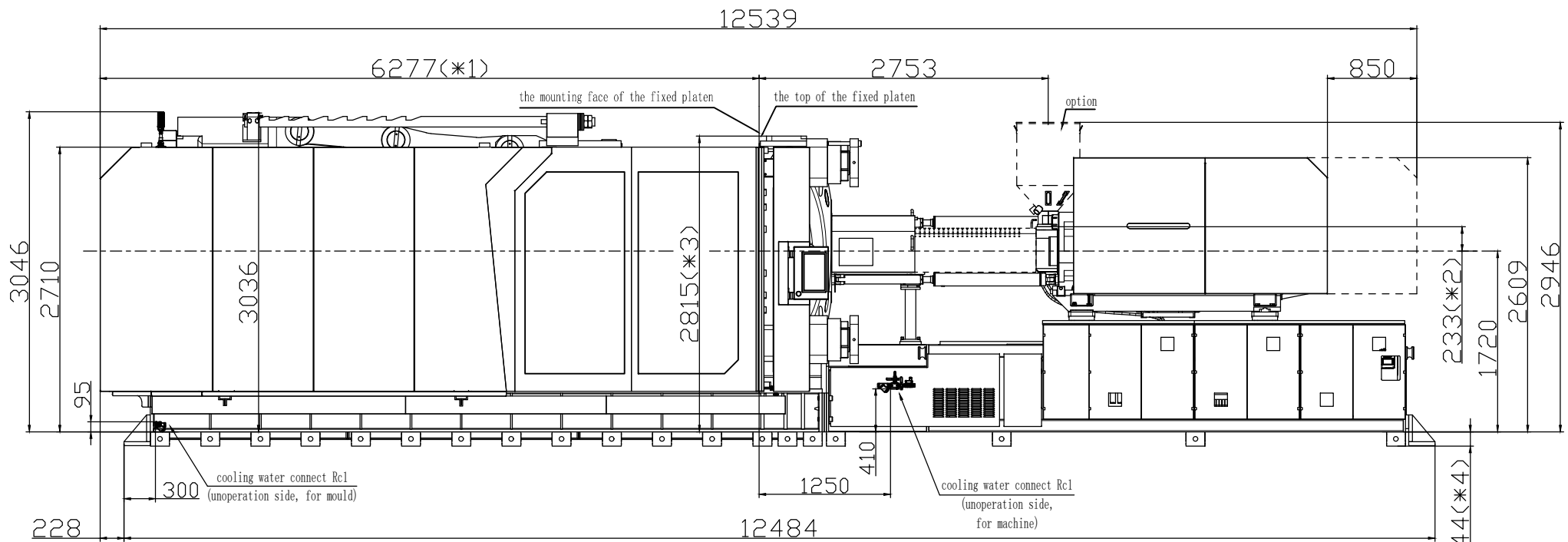
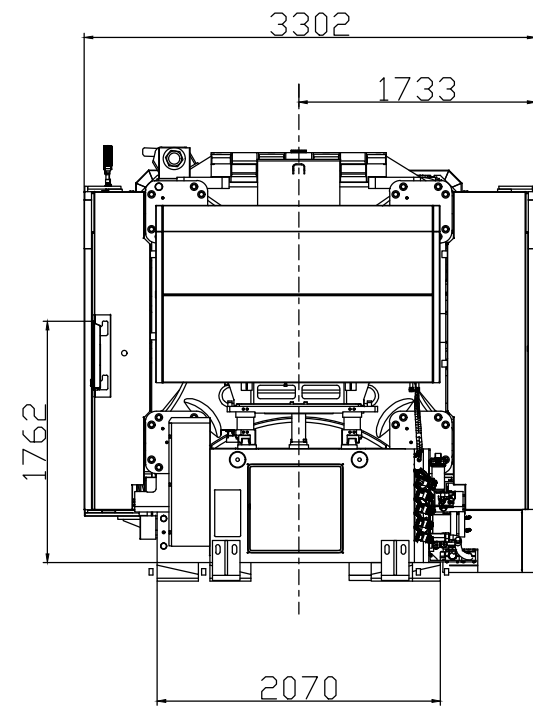
PLEASE READ:

The designs on this drawing were validated using machine manufacturer's drawings and/or information supplied by Absolute or the customer. It is the responsibility of the customer to review and confirm that all dimensions are consistent with the application intended and in accordance with the facility requirements for space, part clearance, overhead clearance, or any other interference. By signing this document, the customer accepts full responsibility for this design and application.

Customer:

Customer Approval:
Authorized Signature

Notes:



- *1 To the mounting face of the fixed platen
- *2 To the face of Hopper fixing platform
- *3 To the top of the fixed platen
- *4 Vibration dumping support



Absolute Haitian Corporation
33 Southgate St. Worcester, MA
T:+1 508-792-4305
www.absolutehaitian.com

Title: ZE V 13800-8700 Layout Drawing

Machine Model: ZE V 13800-8700
Machine Serial Number:
Machine Tonnage:

Sheet: 1 of 1

Drawn By: Harry Date: 3/22/2024
Chkd By: LEON XIE Date: 3/22/2024

Revision Date: Drawing #: Layout

Revision	Date:	Drawing #:	Layout
Rev #: 1			
Rev #: 2			
Rev #: 3			
Rev #: 4			
Rev #: 5			

NOT TO SCALE Size: 11 X 17 "B"
Units: mm / [in]
Material:
Part:
Part:
Part:
Part:

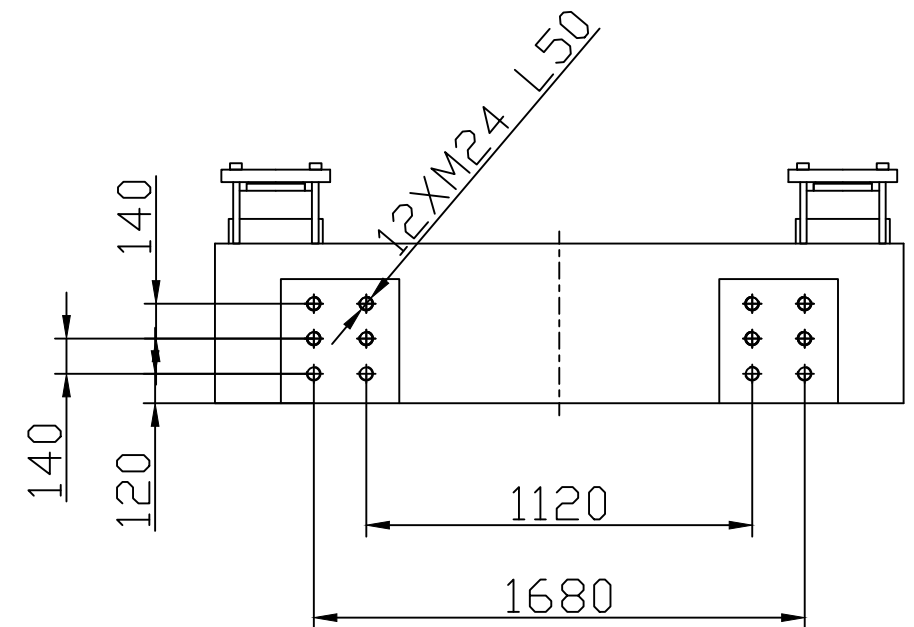
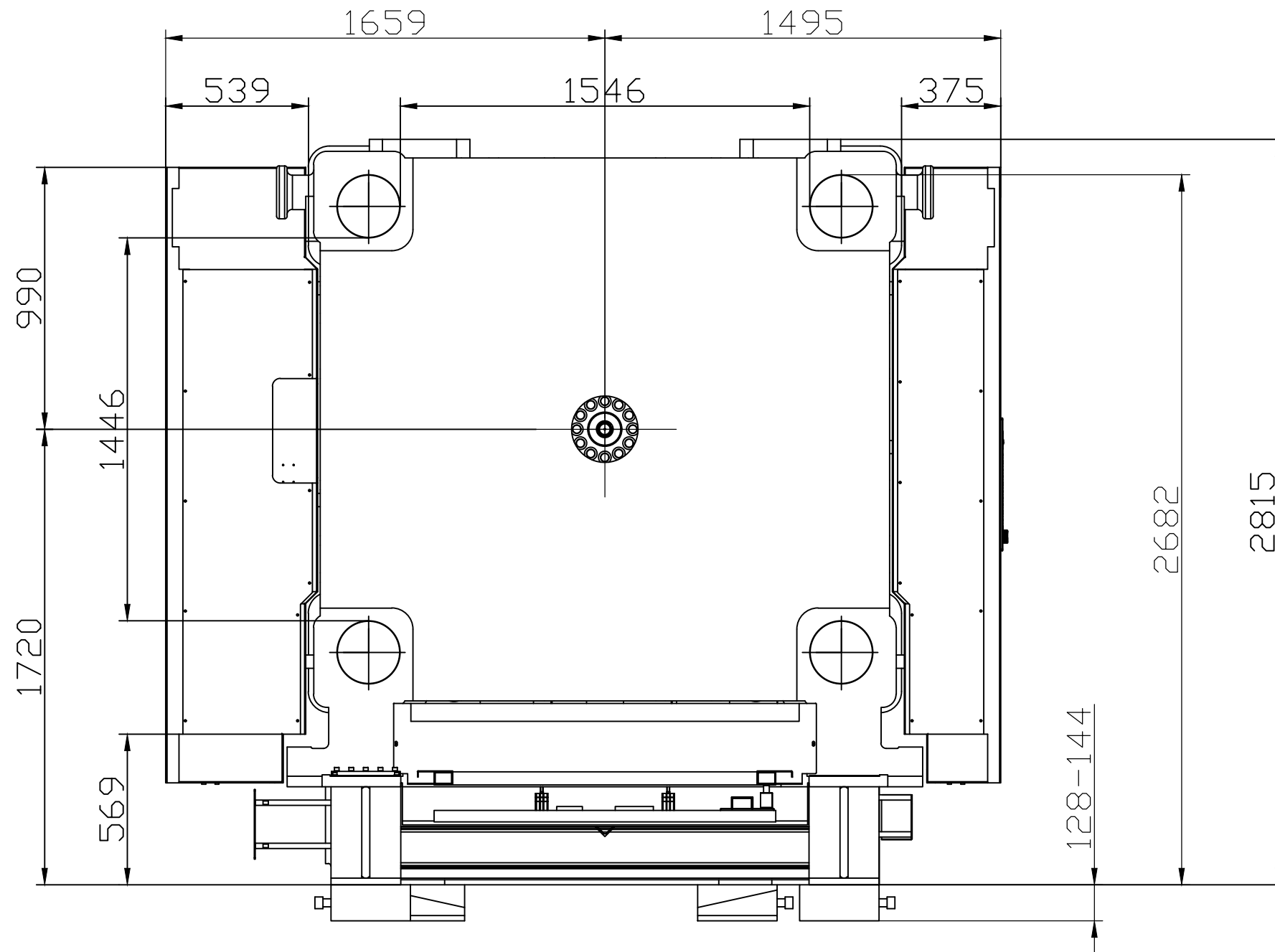
PLEASE READ:

The designs on this drawing were validated using machine manufacturer's drawings and/or information supplied by Absolute or the customer. It is the responsibility of the customer to review and confirm that all dimensions are consistent with the application intended and in accordance with the facility requirements for space, part clearance, overhead clearance, or any other interference. By signing this document, the customer accepts full responsibility for this design and application.

Customer:

Customer Approval:
Authorized Signature

Notes:



Absolute Haitian Corporation
33 Southgate St. Worcester, MA
T: +1 508-792-4305
www.absolutehaitian.com

Title: ZE V 13800 Robot Mounting Drawing

Machine Model: ZE V 13800
Machine Serial Number:
Machine Tonnage:

Sheet: 1 of 1

Drawn By: Harry Date: 4/9/2024
Chkd By: LEON XIE Date: 4/9/2024

Revision Date: Drawing #: Robot Mounting

Rev #: 1
Rev #: 2
Rev #: 3
Rev #: 4
Rev #: 5

NOT TO SCALE Size: 11 X 17 "B"

Units: mm / [in]

Material:
Part:
Part:
Part:
Part:

PLEASE READ:

The designs on this drawing were validated using machine manufacturer's drawings and/or information supplied by Absolute or the customer. It is the responsibility of the customer to review and confirm that all dimensions are consistent with the application intended and in accordance with the facility requirements for space, part clearance, overhead clearance, or any other interference. By signing this document, the customer accepts full responsibility for this design and application.

Customer:

Customer Approval:

Authorized Signature

Notes: