

Specification



ZE3600V-1100

ZERES 5 Series: Electric with Integrated Hydraulics



Clamping Unit		ZE3600 V
Clamping Force	kN	3600
	US Tons	405
Mold Opening Stroke	mm	730
	in.	28.74
Minimum Mold Height	mm	320
	in.	12.6
Maximum Mold Height	mm	710
	in.	27.95
Maximum Daylight	mm	1440
	in.	56.69
Distance Between Tie-Bars (HXV)	mm	820x820
	in.	32.28x32.28
Platen Dimensions (HXV)	mm	1140x1140
	in.	44.88x44.88
Minimum Mold Size	mm	540x540
	in.	21.26x21.26
Ejector Stroke	mm	160
	in.	6.3
Ejector Force	kN	68.6
	US Tons	8

Specification



ZE3600V-1100

ZERES 5 Series: Electric with Integrated Hydraulics

Injection Unit		1100		
Screw & Barrel Designation		A	B	C
Screw Diameter	mm	50	55	60
	in.	1.97	2.17	2.36
Screw L/D Ratio	L/D	22	20	18.3
Injection Volume (Theoretical)	cm ³	471	570	678
	cu.in.	28.74	34.78	41.37
Injection Weight (PS)	g	428	518	617
	oz.	15.10	18.27	21.76
Injection Pressure	MPa	218	180	151
	psi	31618	26107	21901
Holding Pressure	MPa	194	160	134
	psi	28137	23206	19435
Screw Speed	rpm	320	320	320
Plasticizing Rate (GPPS)	g/s	52	64	75
	oz./s	1.83	2.26	2.65
Nozzle Contact Force	kN	85	85	85
	US Tons	10	10	10
Injection Unit		1100		
Injection Speed	mm/s	160		
	in./s	6.3		
Injection Rate (PS)	g/s	274	332	395
	oz./s	9.67	11.71	13.93
Injection Unit		1100h		
Injection Speed	mm/s	250		
	in./s	9.84		
Injection Rate (PS)	g/s	428	518	617
	oz./s	15.10	18.27	21.76
Injection Unit		1100hs		
Injection Speed	mm/s	350		
	in./s	13.78		
Injection Rate (PS)	g/s	600	726	864
	oz./s	21.16	25.61	30.48

Specification



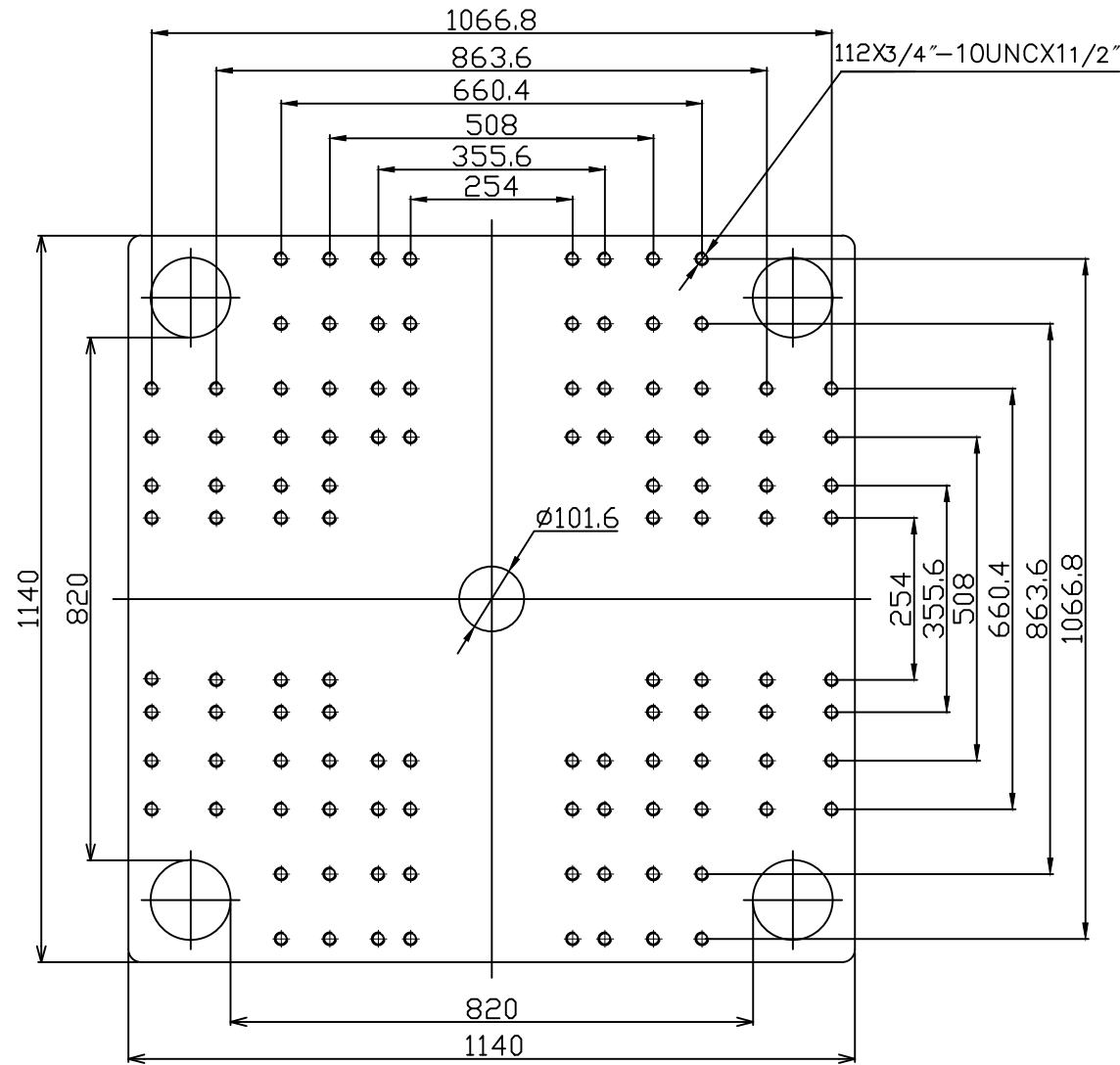
ZE3600V-1100

ZERES 5 Series: Electric with Integrated Hydraulics

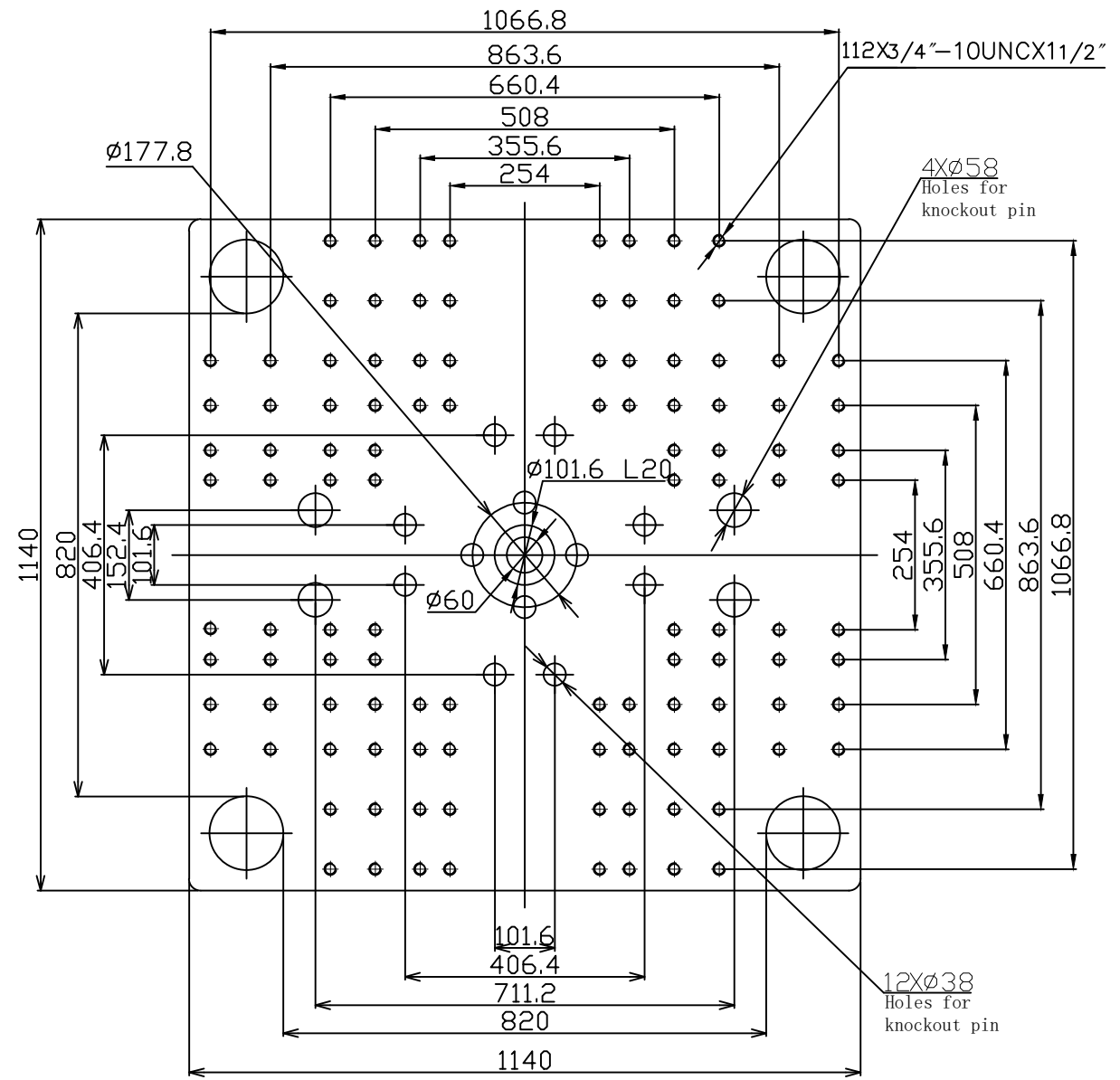
Other		
Connection Power	kW/A	1100:44/74 1100h:44/74 1100hs:69/116
Heating Power	kW	23
Machine Dimension	m in.	7.27x1.99x2.48 286x78x98
Machine Weight	t lbs.	16.5 36376
Hopper Capacity	l gal	50 13
Oil Pressure	MPa psi	17.5 2538
Oil Flow	l/min gal/min	90 24
Oil Tank	l gal	126 33

***NOTE:**

1. Machine dimensions and weights are based on the international standard configuration and are for reference only. Any options or country specific requirements will affect this. Contact Absolute Haitian service department for machine specific information.
2. Power requirements are based on the international standard configuration and are for reference only. Any options or country specific requirements will affect this. Contact Absolute Haitian service department for machine specific information.



Fixed Platen



Moving Platen



Absolute Haitian Corporation
33 Southgate St. Worcester, MA
T: +1 508-792-4305
www.absolutehaitian.com

Title: ZE/VEV 3600 Fixed & Moving Platens Drawing

Machine Model: ZE/VEV 3600
Machine Serial Number:
Machine Tonnage:

Sheet: 1 of 1

Drawn By: Harry Date: 1/9/2024
Chkd By: LEON XIE Date: 1/9/2024

Revision	Date:	Drawing #:	NOT TO SCALE	Size: 11 X 17 "B"
Rev #: 1				Units: mm / [in]
Rev #: 2				Material:
Rev #: 3				Part:
Rev #: 4				Part:
Rev #: 5				Part:

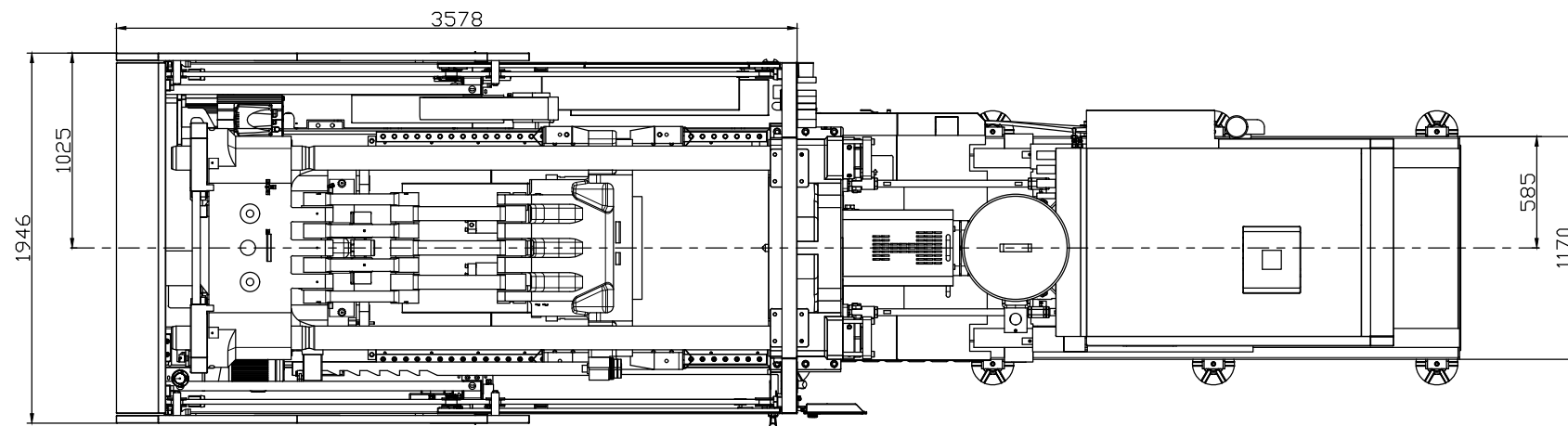
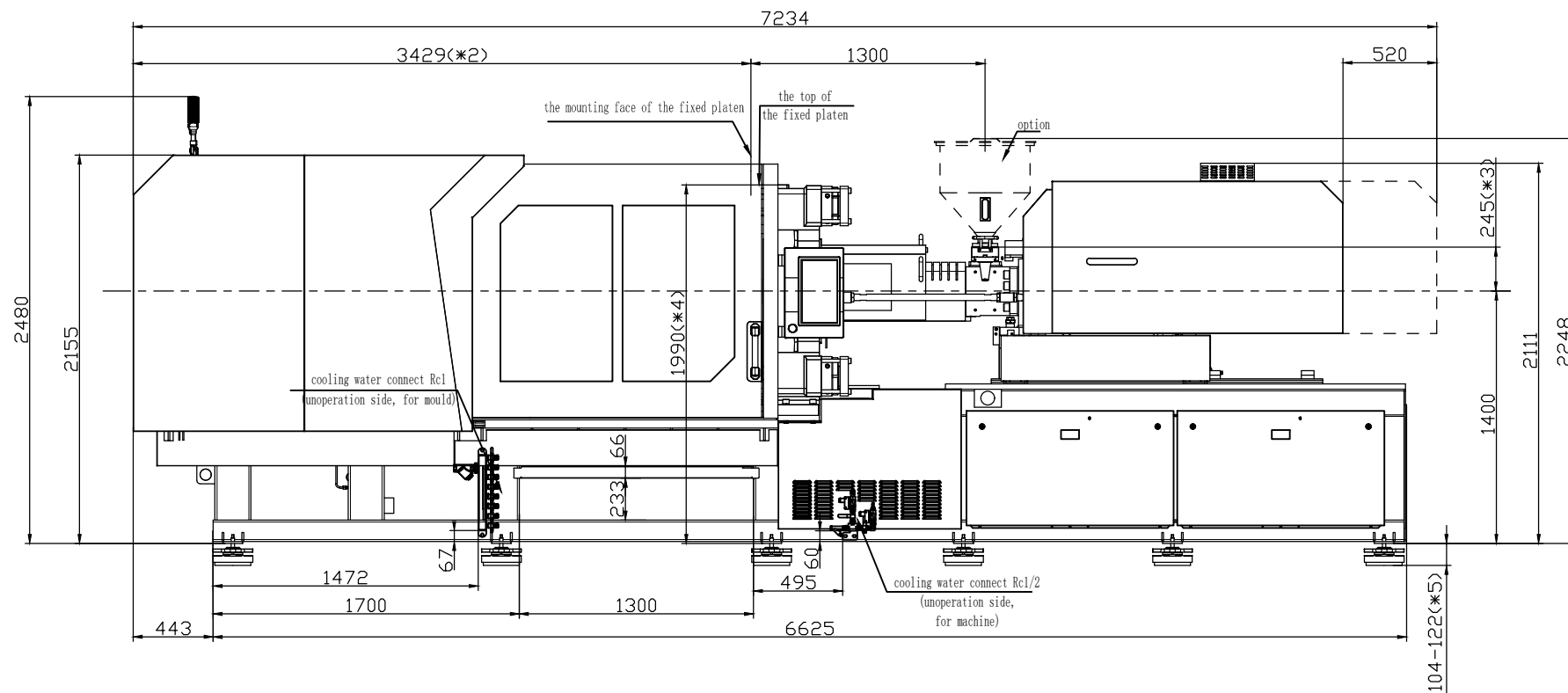
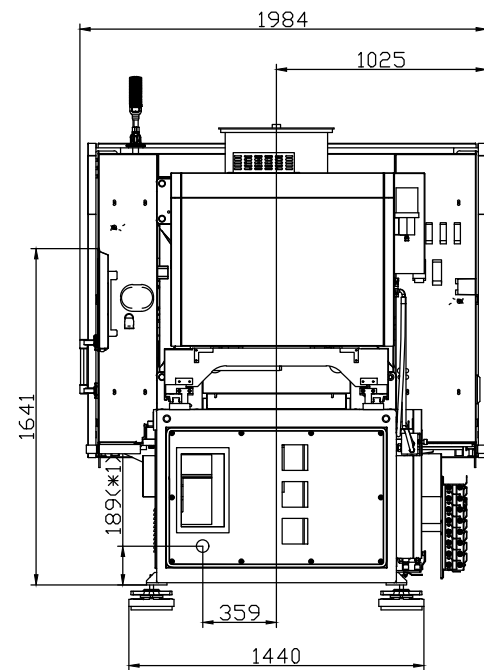
PLEASE READ:

The designs on this drawing were validated using machine manufacturer's drawings and/or information supplied by Absolute or the customer. It is the responsibility of the customer to review and confirm that all dimensions are consistent with the application intended and in accordance with the facility requirements for space, part clearance, overhead clearance, or any other interference. By signing this document, the customer accepts full responsibility for this design and application.

Customer:

Customer Approval:
Authorized Signature

Notes:



- *1 Power in
Current and Power Cable are shown
in the Main Power Supply Circuit
- *2 To the mounting face of the
fixed platen
- *3 To the face of Hopper fixing platform
- *4 To the top of the fixed platen
- *5 Vibration dumping support



Absolute Haitian Corporation
33 Southgate St. Worcester, MA
T:+1 508-792-4305
www.absolutehaitian.com

Title: ZE V 3600-1100 Layout Drawing

Machine Model: ZE V 3600-1100

Machine Serial Number:

Machine Tonnage:

Sheet: 1 of 1

Drawn By: Harry Date: 3/22/2024

Chkd By: LEON XIE Date: 3/22/2024

NOT TO SCALE Size: 11 X 17 "B"

Units: mm / [in]

Material:

Part:

Part:

Part:

Part:

PLEASE READ:

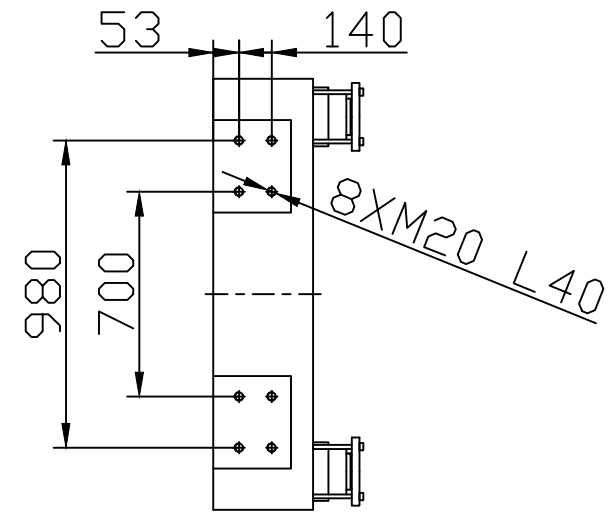
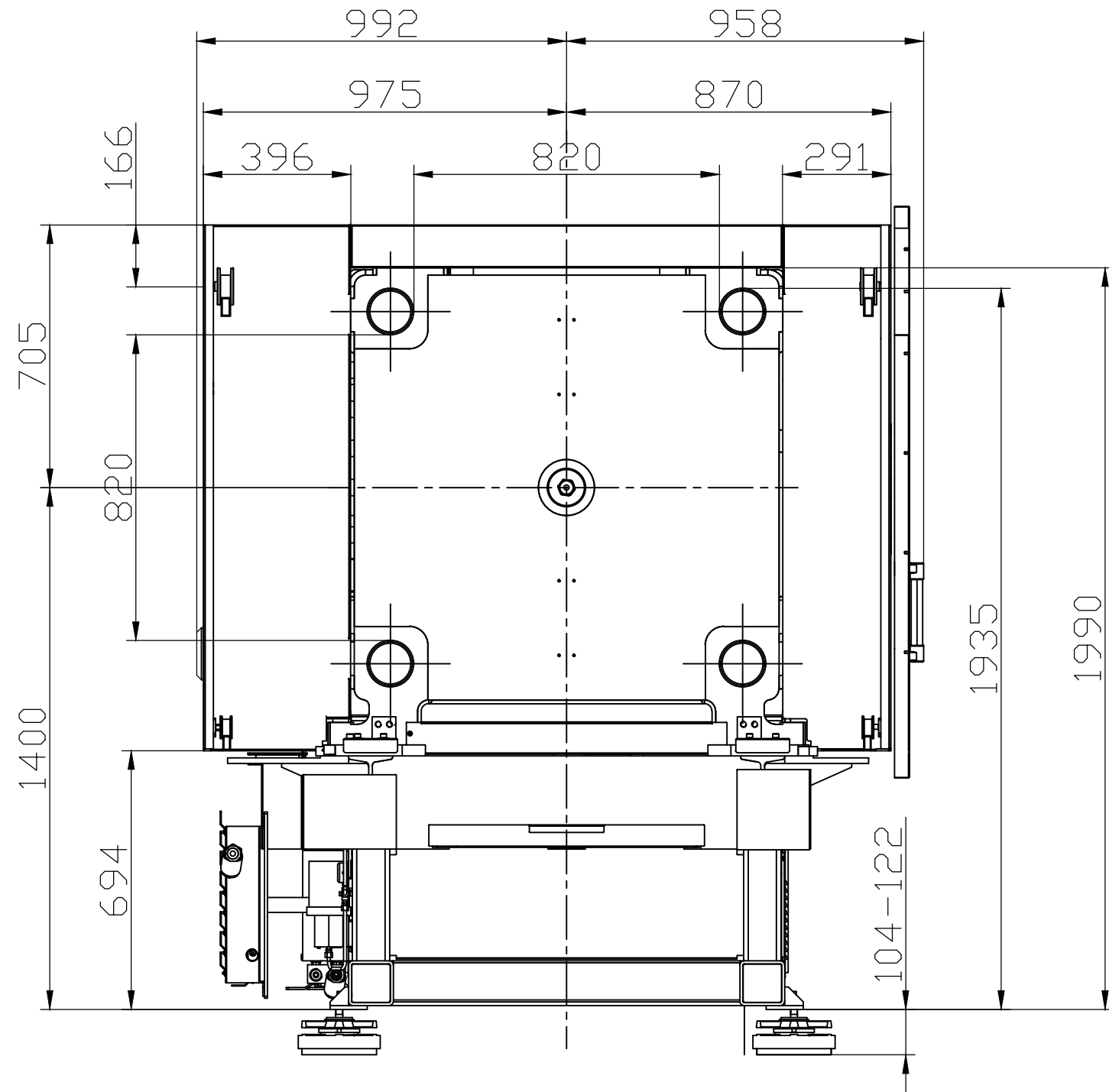
The designs on this drawing were validated using machine manufacturer's drawings and/or information supplied by Absolute or the customer. It is the responsibility of the customer to review and confirm that all dimensions are consistent with the application intended and in accordance with the facility requirements for space, part clearance, overhead clearance, or any other interference. By signing this document, the customer accepts full responsibility for this design and application.

Customer:

Customer Approval:

Authorized Signature

Notes:



Absolute Haitian Corporation
 33 Southgate St. Worcester, MA
 T:+1 508-792-4305
 www.absolutehaitian.com

Title: ZE V 3600 Robot Mounting Drawing

Machine Model: ZE V 3600
 Machine Serial Number:
 Machine Tonnage:

Sheet: 1 of 1

Drawn By: Harry Date: 4/9/2024
 Chkd By: LEON XIE Date: 4/9/2024

Revision	Date:	Drawing #: Robot Mounting
Rev #: 1		
Rev #: 2		
Rev #: 3		
Rev #: 4		
Rev #: 5		

NOT TO SCALE Size: 11 X 17 "B"
 Units: mm / [in]
 Material:
 Part:
 Part:
 Part:
 Part:

PLEASE READ:

The designs on this drawing were validated using machine manufacturer's drawings and/or information supplied by Absolute or the customer. It is the responsibility of the customer to review and confirm that all dimensions are consistent with the application intended and in accordance with the facility requirements for space, part clearance, overhead clearance, or any other interference. By signing this document, the customer accepts full responsibility for this design and application.

Customer:

Customer Approval:
 Authorized Signature

Notes: