

# Specification



## ZE600V-80

ZERES 5 Series: Electric with Integrated Hydraulics



Clamping Unit		ZE600 V
Clamping Force	kN	600
	US Tons	67
Mold Opening Stroke	mm	270
	in.	10.63
Minimum Mold Height	mm	150
	in.	5.91
Maximum Mold Height	mm	370
	in.	14.57
Maximum Daylight	mm	640
	in.	25.2
Distance Between Tie-Bars (HXV)	mm	370x370
	in.	14.57x14.57
Platen Dimensions (HXV)	mm	510x510
	in.	20.08x20.08
Minimum Mold Size	mm	240x240
	in.	9.45x9.45
Ejector Stroke	mm	80
	in.	3.15
Ejector Force	kN	24.5
	US Tons	3

# Specification



## ZE600V-80

ZERES 5 Series: Electric with Integrated Hydraulics

Injection Unit		80		
Screw & Barrel Designation		A	B	C
Screw Diameter	mm	19	22	26
	in.	0.75	0.87	1.02
Screw L/D Ratio	L/D	21	22	18
Injection Volume (Theoretical)	cm <sup>3</sup>	21	36	50
	cu.in.	1.28	2.20	3.05
Injection Weight (PS)	g	19.1	32.8	45.5
	oz.	0.67	1.16	1.60
Injection Pressure	MPa	260	220	157
	psi	37710	31908	22771
Holding Pressure	MPa	208	175	125
	psi	30168	25382	18130
Screw Speed	rpm	400	400	400
Plasticizing Rate (GPPS)	g/s	3.8	6	8
	oz./s	0.13	0.21	0.28
Nozzle Contact Force	kN	26	26	26
	US Tons	3	3	3
Injection Unit		80		
Injection Speed	mm/s	200		
	in./s	7.87		
Injection Rate (PS)	g/s	49	66	92
	oz./s	1.73	2.33	3.25
Injection Unit		80h		
Injection Speed	mm/s	350		
	in./s	13.78		
Injection Rate (PS)	g/s	86	116	162
	oz./s	3.03	4.09	5.71
Injection Unit		80hs		
Injection Speed	mm/s	500		
	in./s	19.69		
Injection Rate (PS)	g/s	123	166	231
	oz./s	4.34	5.86	8.15

# Specification



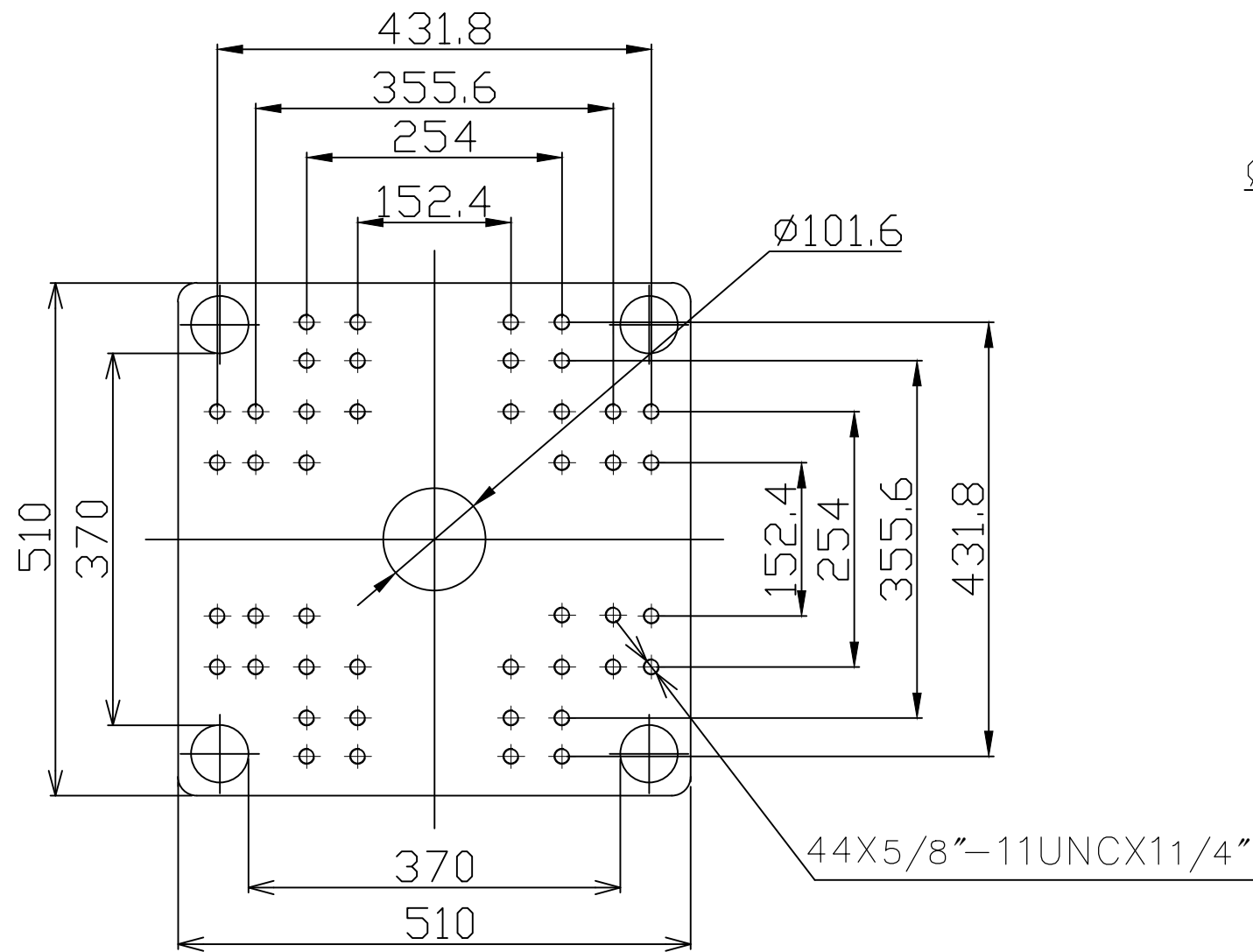
## ZE600V-80

ZERES 5 Series: Electric with Integrated Hydraulics

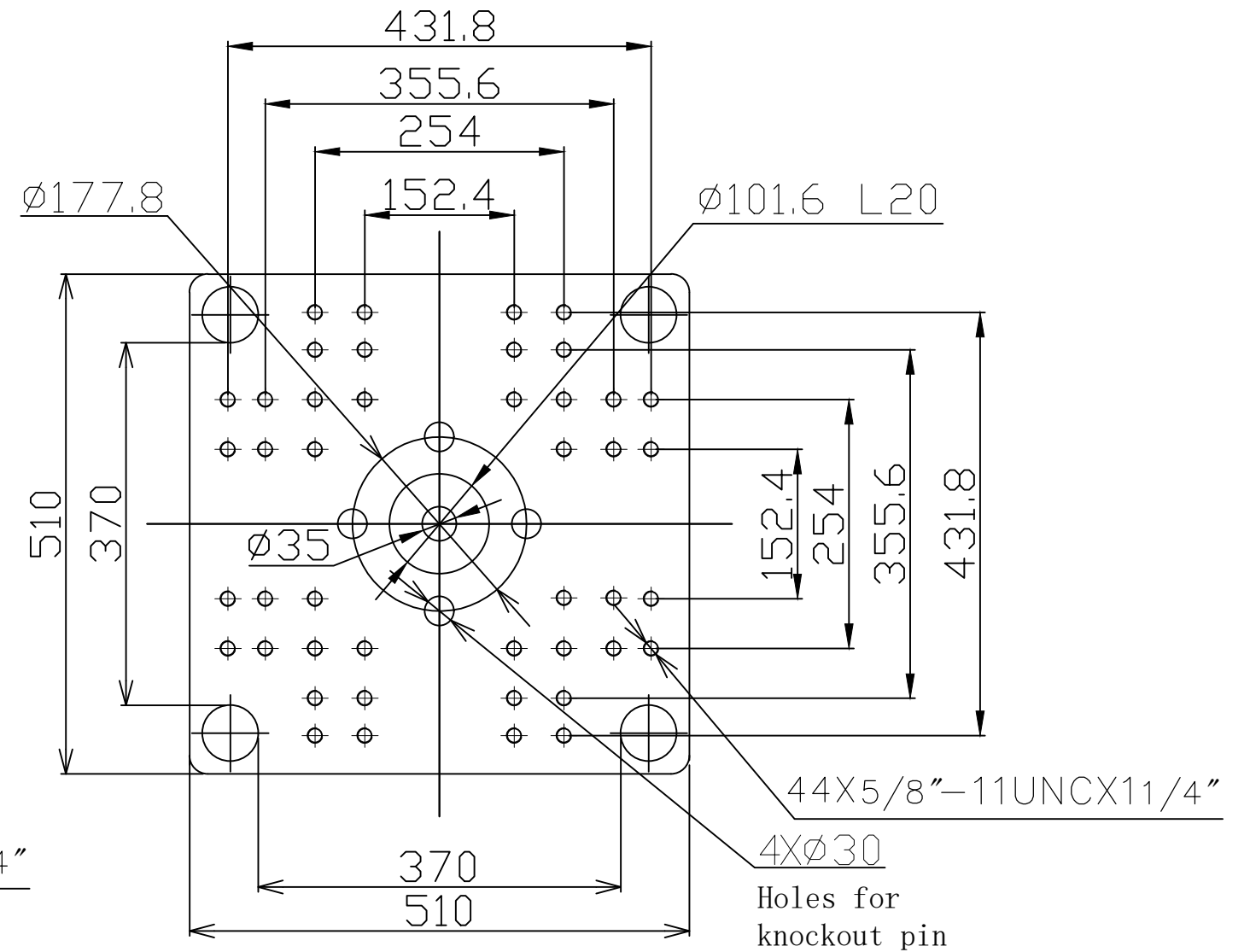
Other				
Connection Power	kW/A		80:11/19	
			80h:13/22	
			80hs:16/28	
Heating Power	kW	4.5	5.7	5.7
Machine Dimension	m		4.09x1.19x1.96	
	in.		161x47x77	
Machine Weight	t		3.25	
	lbs.		7165	
Hopper Capacity (OP)	l		15	
	gal		4	
Oil Pressure	MPa		17.5	
	psi		2538	
Oil Flow	l/min		35	
	gal/min		9	
Oil Tank	l		45	
	gal		12	

**\*NOTE:**

1. Machine dimensions and weights are based on the international standard configuration and are for reference only. Any options or country specific requirements will affect this. Contact Absolute Haitian service department for machine specific information.
2. Power requirements are based on the international standard configuration and are for reference only. Any options or country specific requirements will affect this. Contact Absolute Haitian service department for machine specific information.



Fixed Platen



Moving Platen



Absolute Haitian Corporation  
33 Southgate St. Worcester, MA  
T:+1 508-792-4305  
www.absolutehaitian.com

Title: ZE/VEV 600 Fixed & Moving Platens Drawing

Machine Model: ZE/VEV 600  
Machine Serial Number:  
Machine Tonnage:

Sheet: 1 of 1

Drawn By: Harry Date: 1/9/2024  
Chkd By: LEON XIE Date: 1/9/2024

Revision	Date:	Drawing #:	NOT TO SCALE	Size: 11 X 17 "B"
Rev #: 1				Units: mm / [in]
Rev #: 2				Material:
Rev #: 3				Part:
Rev #: 4				Part:
Rev #: 5				Part:

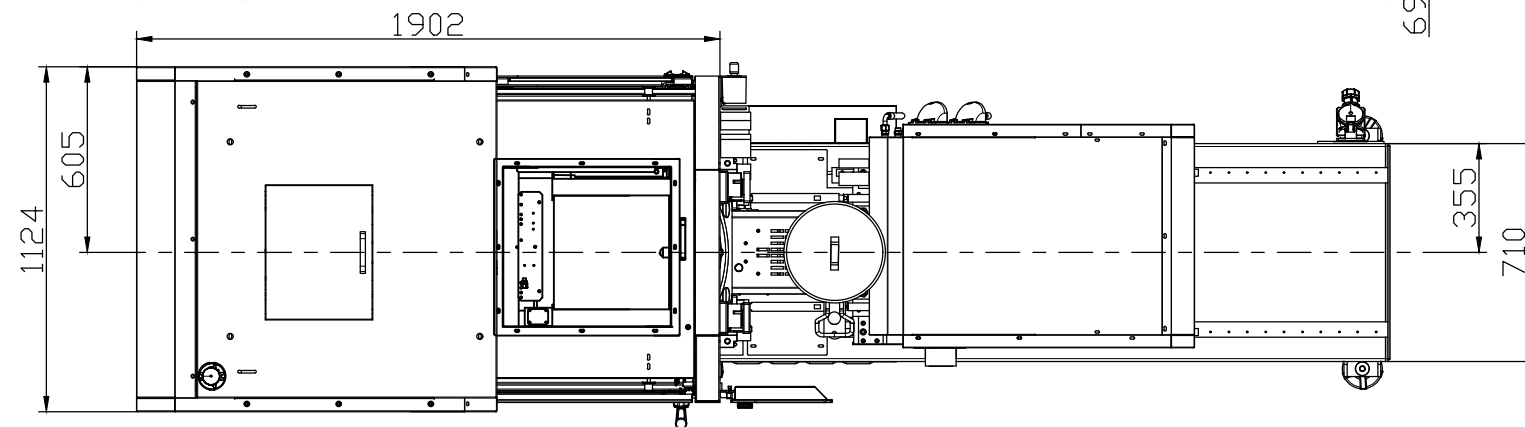
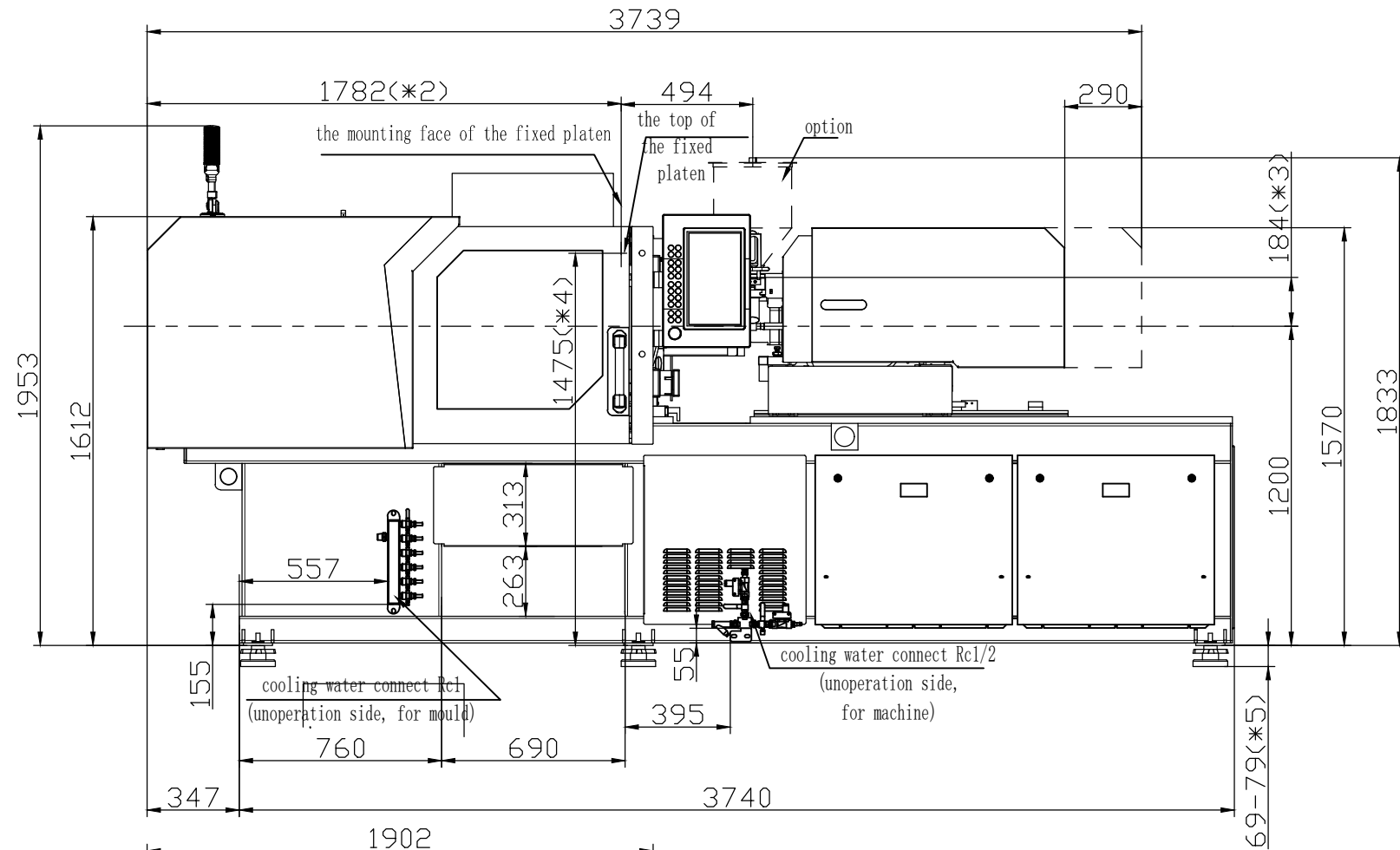
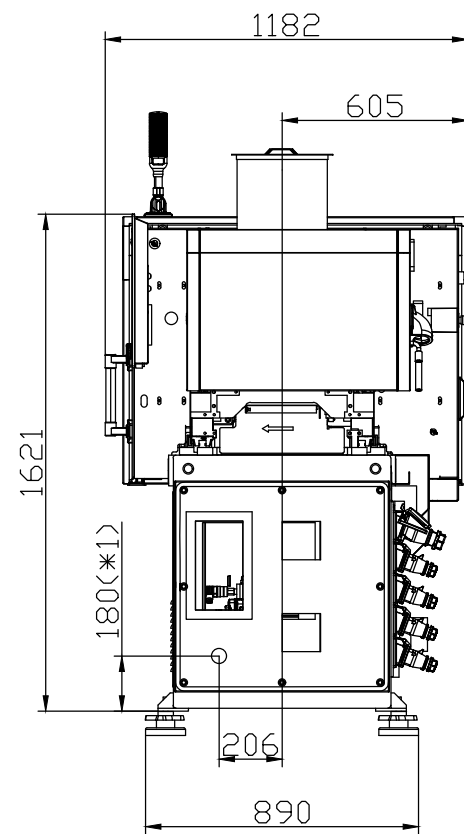
PLEASE READ:

The designs on this drawing were validated using machine manufacturer's drawings and/or information supplied by Absolute or the customer. It is the responsibility of the customer to review and confirm that all dimensions are consistent with the application intended and in accordance with the facility requirements for space, part clearance, overhead clearance, or any other interference. By signing this document, the customer accepts full responsibility for this design and application.

Customer:

Customer Approval:  
Authorized Signature

Notes:



- \*1 Power in Current and Power Cable are shown in the Main Power Supply Circuit
- \*2 To the mounting face of the fixed platen
- \*3 To the face of Hopper fixing platform
- \*4 To the top of the fixed platen
- \*5 Vibration dumping support



Absolute Haitian Corporation  
33 Southgate St. Worcester, MA  
T:+1 508-792-4305  
www.absolutehaitian.com

Title: ZE V 600-80 Layout Drawing

Machine Model: ZE V 600-80  
Machine Serial Number:  
Machine Tonnage:

Sheet: 1 of 1

Drawn By: Harry Date: 3/22/2024  
Chkd By: LEON XIE Date: 3/22/2024

Revision Date: Drawing #: Layout

Revision	Date:	Drawing #: Layout
Rev #: 1		
Rev #: 2		
Rev #: 3		
Rev #: 4		
Rev #: 5		

NOT TO SCALE Size: 11 X 17 "B"  
Units: mm / [in]  
Material:  
Part:  
Part:  
Part:  
Part:

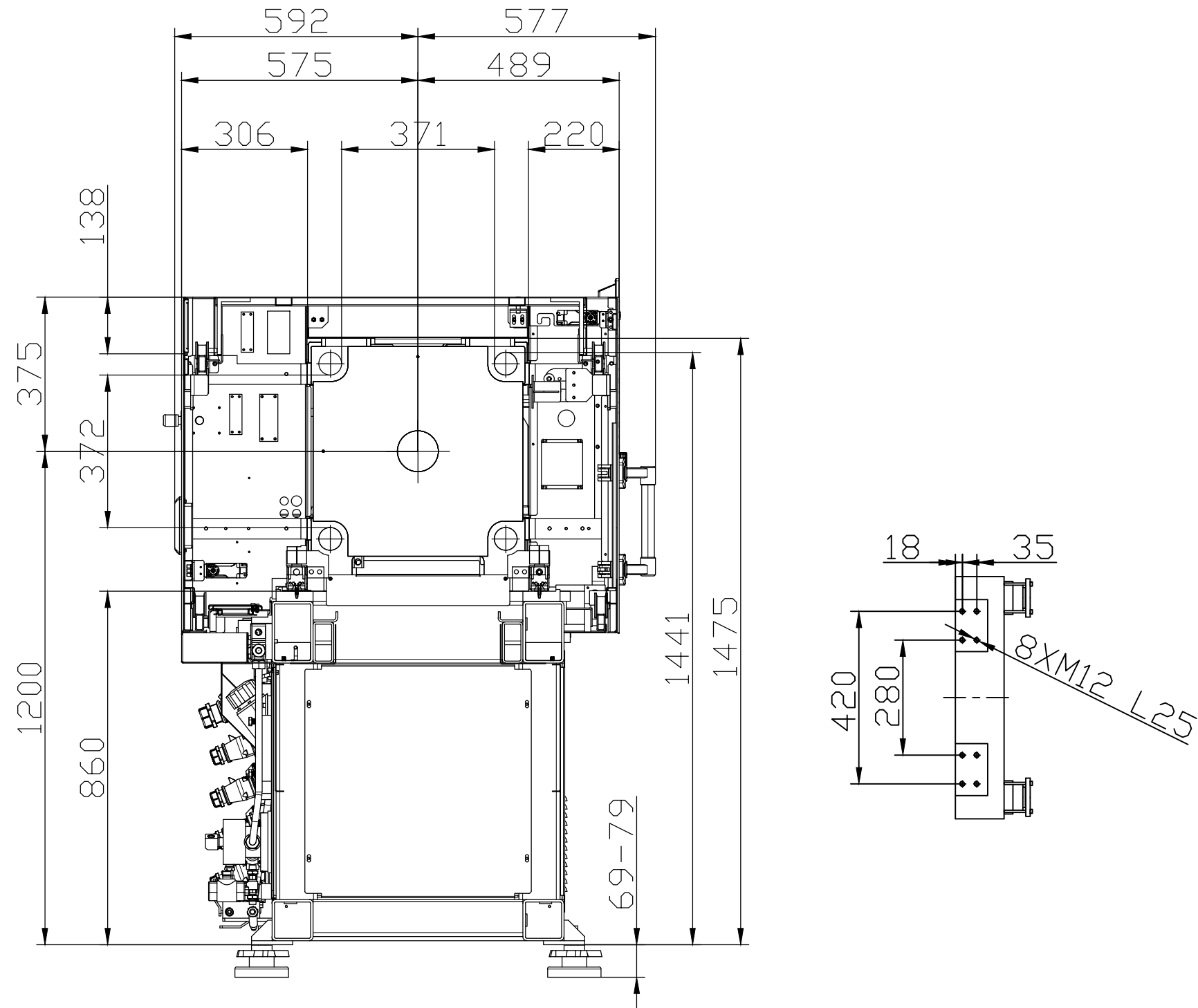
PLEASE READ:

The designs on this drawing were validated using machine manufacturer's drawings and/or information supplied by Absolute or the customer. It is the responsibility of the customer to review and confirm that all dimensions are consistent with the application intended and in accordance with the facility requirements for space, part clearance, overhead clearance, or any other interference. By signing this document, the customer accepts full responsibility for this design and application.

Customer:

Customer Approval:  
Authorized Signature

Notes:



Absolute Haitian Corporation  
 33 Southgate St. Worcester, MA  
 T:+1 508-792-4305  
 www.absolutehaitian.com

<b>Title:</b> ZE V 600 Robot Mounting Drawing		<b>Sheet:</b> 1 of 1	
<b>Machine Model:</b> ZE V 600		<b>Drawn By:</b> Harry	<b>Date:</b> 4/9/2024
<b>Machine Serial Number:</b>		<b>Chkd By:</b> LEON XIE	<b>Date:</b> 4/9/2024
<b>Machine Tonnage:</b>		<b>NOT TO SCALE</b>	<b>Size:</b> 11 X 17 "B"
<b>Revision</b>	<b>Date:</b>	<b>Drawing #:</b> Robot Mounting	<b>Units:</b> mm / [in]
Rev #: 1			
Rev #: 2			<b>Material:</b>
Rev #: 3			<b>Part:</b>
Rev #: 4			<b>Part:</b>
Rev #: 5			<b>Part:</b>

**PLEASE READ:**  
 The designs on this drawing were validated using machine manufacturer's drawings and/or information supplied by Absolute or the customer. It is the responsibility of the customer to review and confirm that all dimensions are consistent with the application intended and in accordance with the facility requirements for space, part clearance, overhead clearance, or any other interference. By signing this document, the customer accepts full responsibility for this design and application.

**Customer:** \_\_\_\_\_ **Customer Approval:**  
 Authorized Signature

**Notes:**