

# Specification



## ZE600V-120

ZERES 5 Series: Electric with Integrated Hydraulics



Clamping Unit		ZE600 V
Clamping Force	kN	600
	US Tons	67
Mold Opening Stroke	mm	270
	in.	10.63
Minimum Mold Height	mm	150
	in.	5.91
Maximum Mold Height	mm	370
	in.	14.57
Maximum Daylight	mm	640
	in.	25.2
Distance Between Tie-Bars (HXV)	mm	370x370
	in.	14.57x14.57
Platen Dimensions (HXV)	mm	510x510
	in.	20.08x20.08
Minimum Mold Size	mm	240x240
	in.	9.45x9.45
Ejector Stroke	mm	80
	in.	3.15
Ejector Force	kN	24.5
	US Tons	3

# Specification



## ZE600V-120

ZERES 5 Series: Electric with Integrated Hydraulics

Injection Unit		120		
Screw & Barrel Designation		A	B	C
Screw Diameter	mm	22	26	30
	in.	0.87	1.02	1.18
Screw L/D Ratio	L/D	22	22	19
Injection Volume (Theoretical)	cm <sup>3</sup>	36	58	77
	cu.in.	2.20	3.54	4.70
Injection Weight (PS)	g	32.8	52	70
	oz.	1.16	1.83	2.47
Injection Pressure	MPa	280	220	165
	psi	40611	31908	23931
Holding Pressure	MPa	220	160	120
	psi	31908	23206	17405
Screw Speed	rpm	400	400	400
Plasticizing Rate (GPPS)	g/s	6	8.8	13
	oz./s	0.21	0.31	0.46
Nozzle Contact Force	kN	26	26	26
	US Tons	3	3	3
Injection Unit		120		
Injection Speed	mm/s	200		
	in./s	7.87		
Injection Rate (PS)	g/s	66	92	123
	oz./s	2.33	3.25	4.34
Injection Unit		120h		
Injection Speed	mm/s	350		
	in./s	13.78		
Injection Rate (PS)	g/s	116	162	216
	oz./s	4.09	5.71	7.62
Injection Unit		120hs		
Injection Speed	mm/s	500		
	in./s	19.69		
Injection Rate (PS)	g/s	166	231	308
	oz./s	5.86	8.15	10.86

# Specification



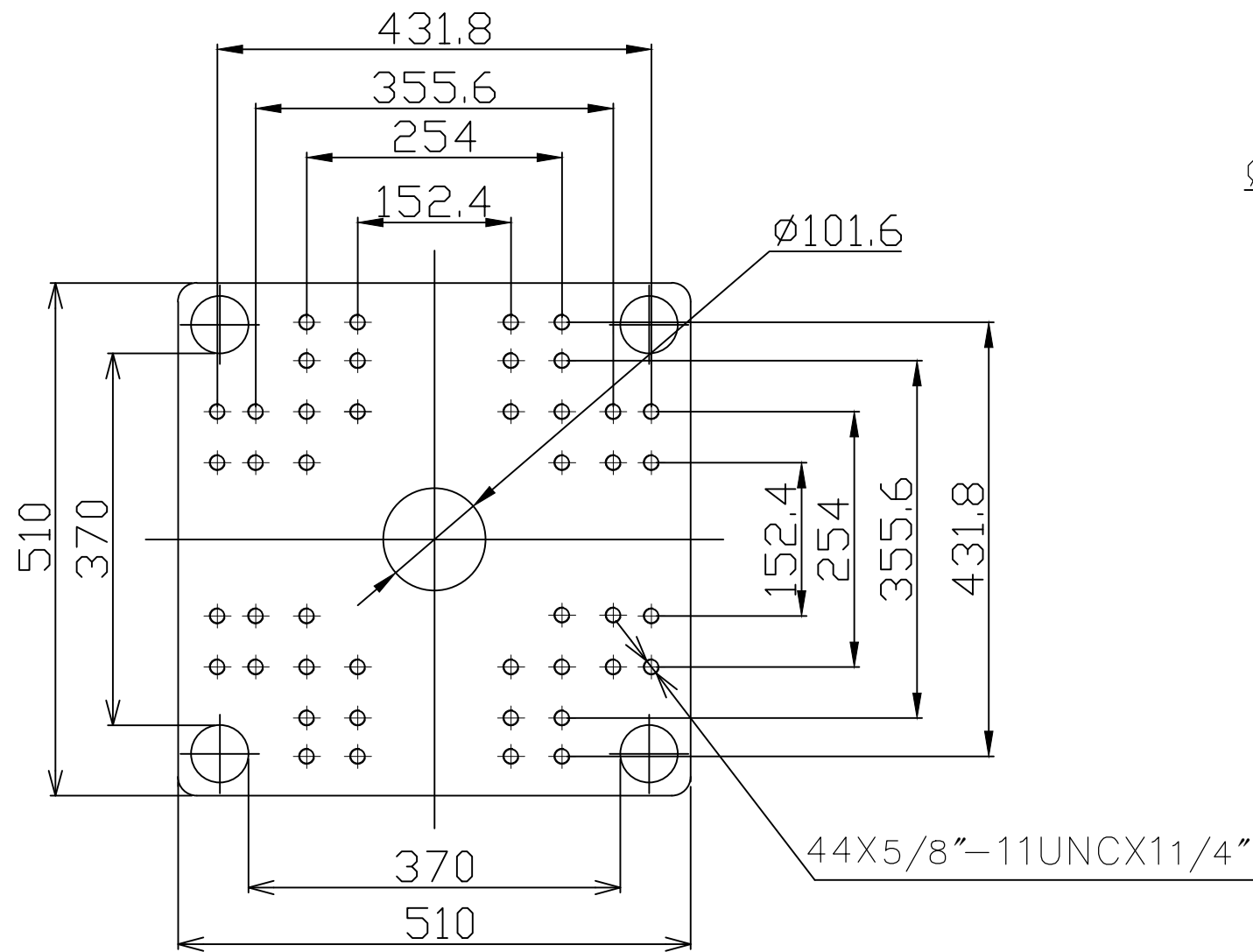
## ZE600V-120

ZERES 5 Series: Electric with Integrated Hydraulics

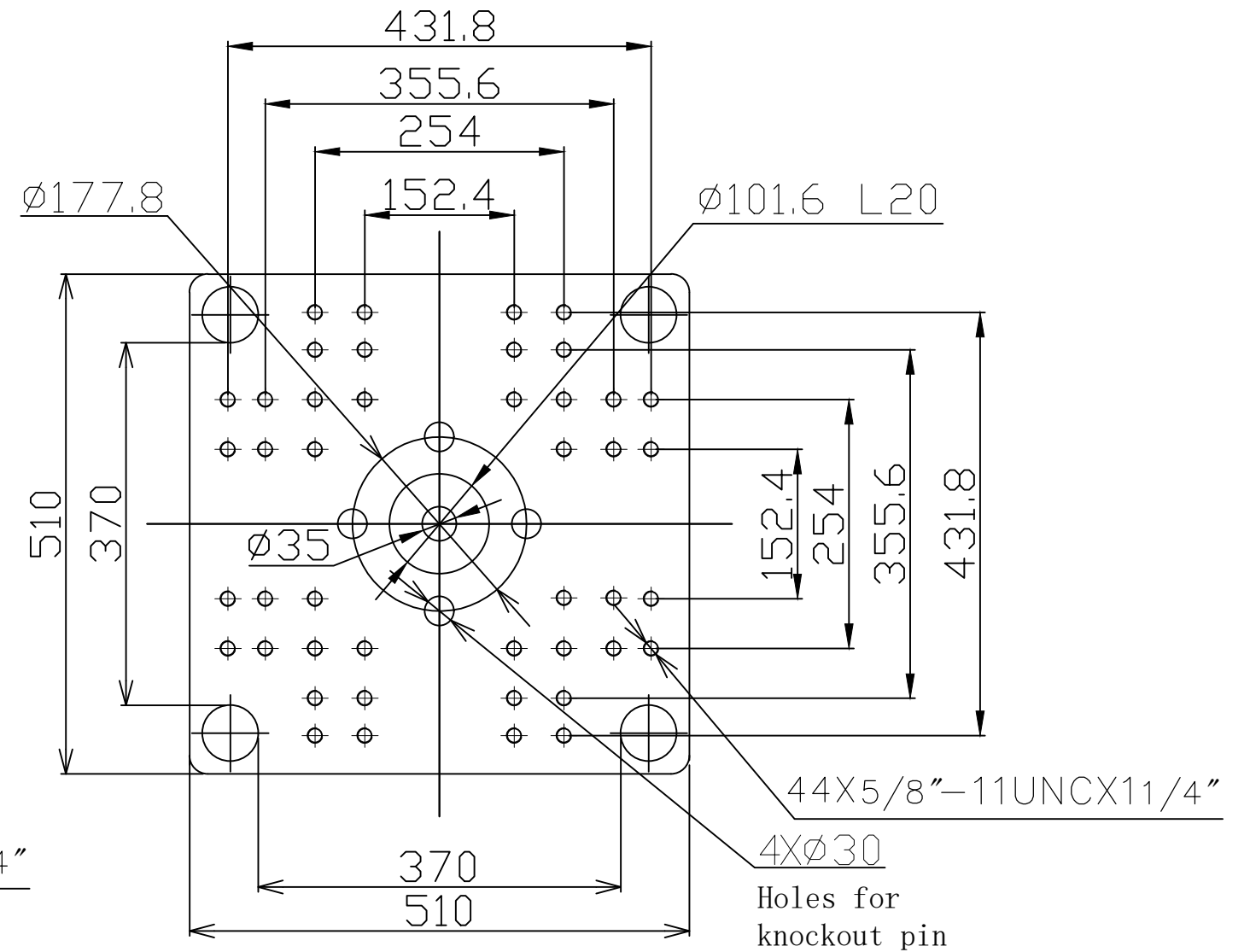
Other				
Connection Power	kW/A		120:12/21 120h:16/28 120hs:19/33	
Heating Power	kW	6	7.8	7.8
Machine Dimension	m	4.09x1.19x1.96		
	in.	161x47x77		
Machine Weight	t	3.27		
	lbs.	7209		
Hopper Capacity (OP)	l	15		
	gal	4		
Oil Pressure	MPa	17.5		
	psi	2538		
Oil Flow	l/min	35		
	gal/min	9		
Oil Tank	l	45		
	gal	12		

**\*NOTE:**

1. Machine dimensions and weights are based on the international standard configuration and are for reference only. Any options or country specific requirements will affect this. Contact Absolute Haitian service department for machine specific information.
2. Power requirements are based on the international standard configuration and are for reference only. Any options or country specific requirements will affect this. Contact Absolute Haitian service department for machine specific information.



Fixed Platen



Moving Platen



Absolute Haitian Corporation  
33 Southgate St. Worcester, MA  
T: +1 508-792-4305  
www.absolutehaitian.com

Title: ZE/VEV 600 Fixed & Moving Platens Drawing

Machine Model: ZE/VEV 600  
Machine Serial Number:  
Machine Tonnage:

Sheet: 1 of 1

Drawn By: Harry Date: 1/9/2024  
Chkd By: LEON XIE Date: 1/9/2024

Revision	Date:	Drawing #:	NOT TO SCALE	Size: 11 X 17 "B"
Rev #: 1				Units: mm / [in]
Rev #: 2				Material:
Rev #: 3				Part:
Rev #: 4				Part:
Rev #: 5				Part:

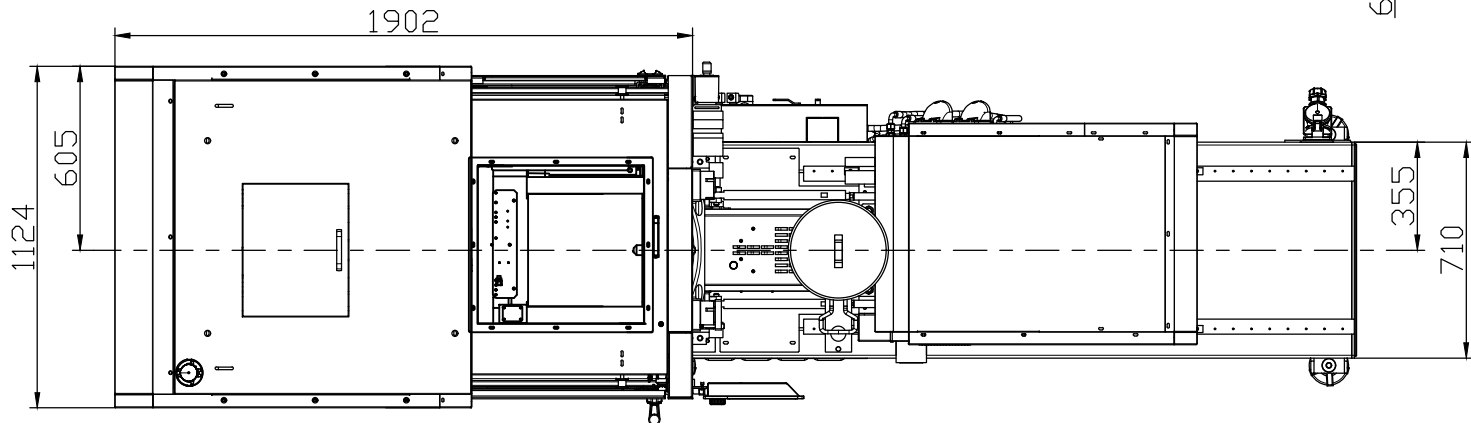
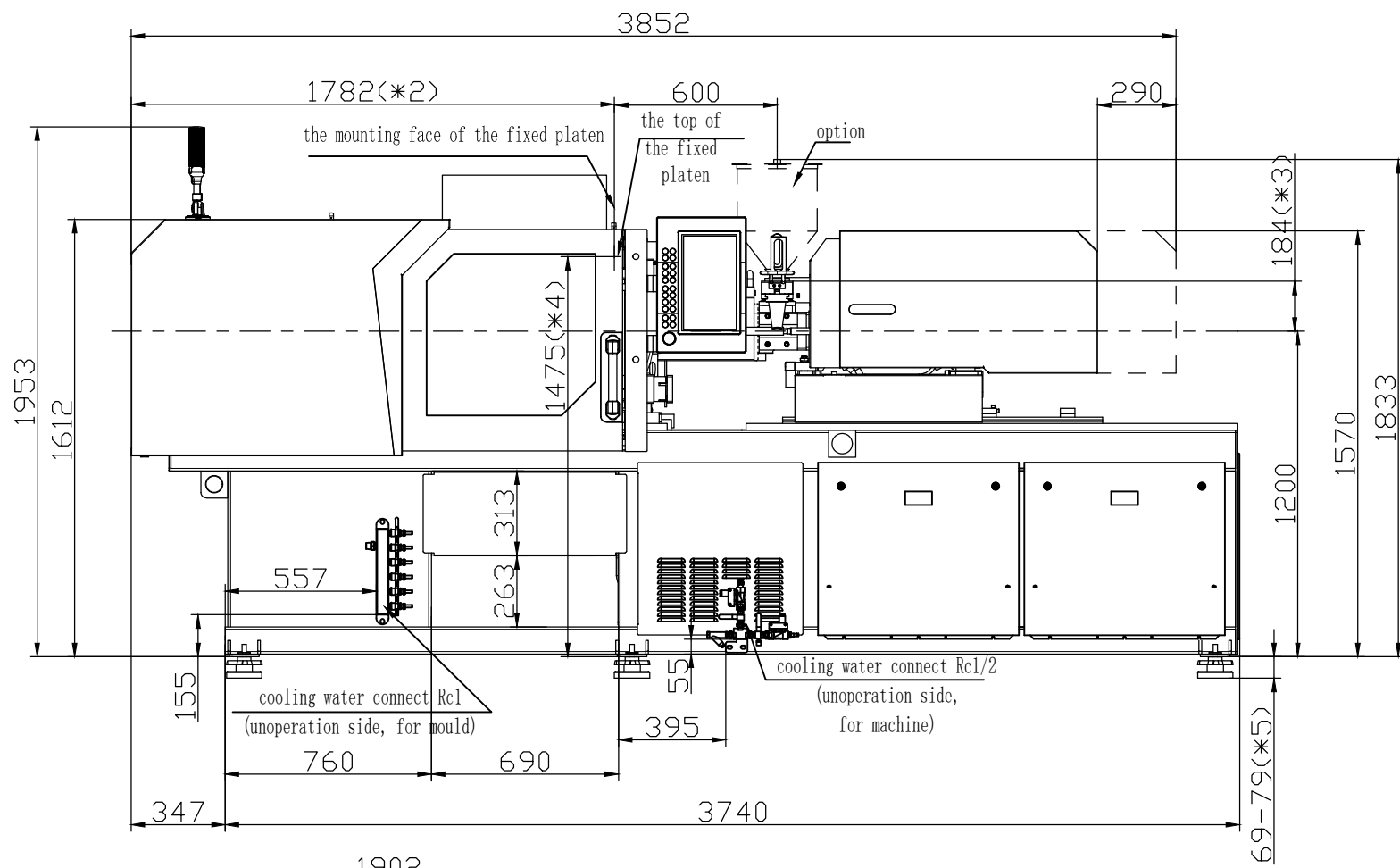
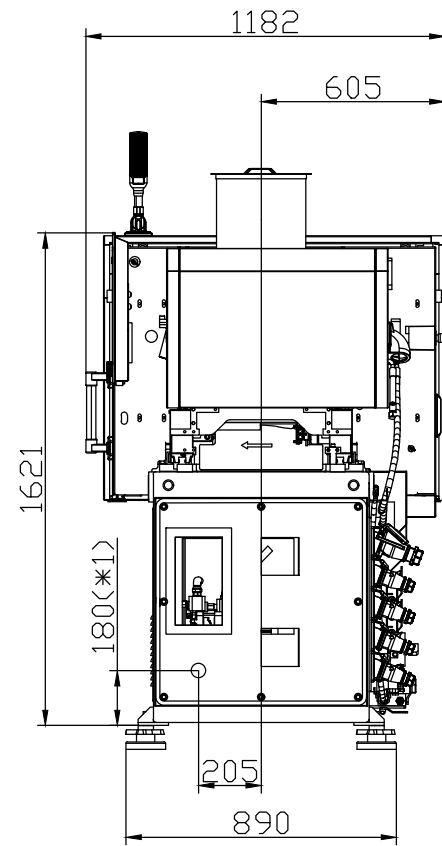
PLEASE READ:

The designs on this drawing were validated using machine manufacturer's drawings and/or information supplied by Absolute or the customer. It is the responsibility of the customer to review and confirm that all dimensions are consistent with the application intended and in accordance with the facility requirements for space, part clearance, overhead clearance, or any other interference. By signing this document, the customer accepts full responsibility for this design and application.

Customer:

Customer Approval:  
Authorized Signature

Notes:



- \*1 Power in  
Current and Power Cable are shown  
in the Main Power Supply Circuit
- \*2 To the mounting face of the  
fixed platen
- \*3 To the face of Hopper fixing platform
- \*4 To the top of the fixed platen
- \*5 Vibration dumping support



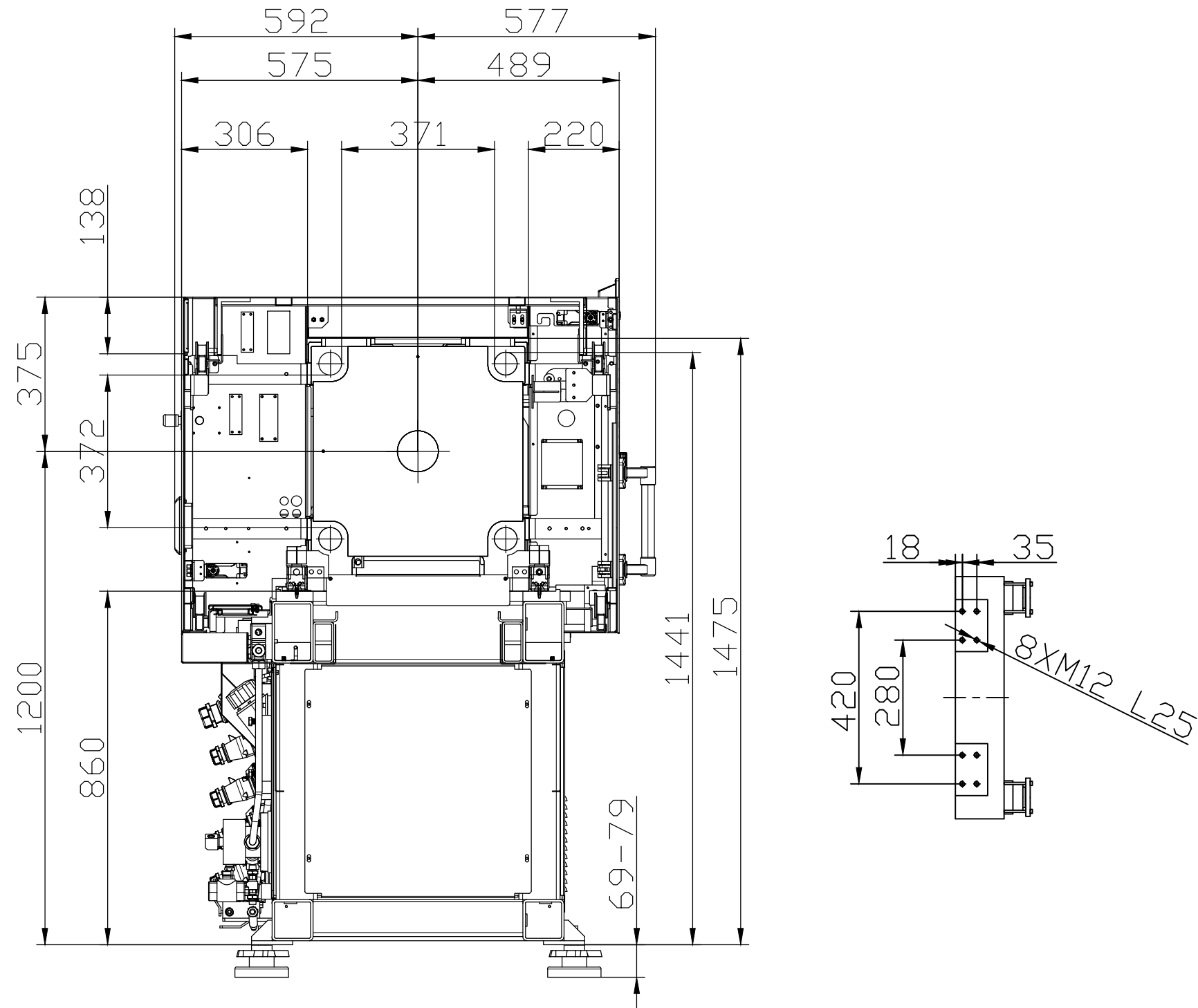
Absolute Haitian Corporation  
33 Southgate St. Worcester, MA  
T:+1 508-792-4305  
www.absolutehaitian.com

Title: ZE V 600-120 Layout Drawing			Sheet: 1 of 1	
Machine Model: ZE V 600-120			Drawn By: Harry	Date: 3/22/2024
Machine Serial Number:			Chkd By: LEON XIE	Date: 3/22/2024
Machine Tonnage:			NOT TO SCALE	Size: 11 X 17 "B"
Revision	Date:	Drawing #: Layout	Units: mm / [in]	
Rev #: 1				
Rev #: 2				
Rev #: 3			Material:	
Rev #: 4			Part:	
Rev #: 5			Part:	

PLEASE READ:  
The designs on this drawing were validated using machine manufacturer's drawings and/or information supplied by Absolute or the customer. It is the responsibility of the customer to review and confirm that all dimensions are consistent with the application intended and in accordance with the facility requirements for space, part clearance, overhead clearance, or any other interference. By signing this document, the customer accepts full responsibility for this design and application.

Customer: \_\_\_\_\_ Customer Approval: \_\_\_\_\_  
Authorized Signature

Notes:



Absolute Haitian Corporation  
 33 Southgate St. Worcester, MA  
 T:+1 508-792-4305  
 www.absolutehaitian.com

<b>Title:</b> ZE V 600 Robot Mounting Drawing		<b>Sheet:</b> 1 of 1	
<b>Machine Model:</b> ZE V 600		<b>Drawn By:</b> Harry	<b>Date:</b> 4/9/2024
<b>Machine Serial Number:</b>		<b>Chkd By:</b> LEON XIE	<b>Date:</b> 4/9/2024
<b>Machine Tonnage:</b>		<b>NOT TO SCALE</b>	<b>Size:</b> 11 X 17 "B"
<b>Revision</b>	<b>Date:</b>	<b>Drawing #:</b> Robot Mounting	<b>Units:</b> mm / [in]
Rev #: 1			<b>Material:</b> Part: Part: Part: Part:
Rev #: 2			
Rev #: 3			
Rev #: 4			
Rev #: 5			

**PLEASE READ:**  
 The designs on this drawing were validated using machine manufacturer's drawings and/or information supplied by Absolute or the customer. It is the responsibility of the customer to review and confirm that all dimensions are consistent with the application intended and in accordance with the facility requirements for space, part clearance, overhead clearance, or any other interference. By signing this document, the customer accepts full responsibility for this design and application.

**Customer:** \_\_\_\_\_ **Customer Approval:**  
 Authorized Signature

**Notes:**