

Specification



ZE11000V-8700

ZERES 5 Series: Electric with Integrated Hydraulics



Clamping Unit		ZE11000 V
Clamping Force	kN	11000
	US Tons	1236
Mold Opening Stroke	mm	1300
	in.	51.18
Minimum Mold Height	mm	500
	in.	19.69
Maximum Mold Height	mm	1200
	in.	47.24
Maximum Daylight	mm	2500
	in.	98.43
Distance Between Tie-Bars (HXV)	mm	1320x1320
	in.	51.97x51.97
Platen Dimensions (HXV)	mm	1750x1750
	in.	68.9x68.9
Minimum Mold Size	mm	870x870
	in.	34.25x34.25
Ejector Stroke	mm	200
	in.	7.87
Ejector Force	kN	230
	US Tons	26

Specification



ZE11000V-8700

ZERES 5 Series: Electric with Integrated Hydraulics

Injection Unit		8700		
Screw & Barrel Designation		A	B	C
Screw Diameter	mm	100	110	120
	in.	3.94	4.33	4.72
Screw L/D Ratio	L/D	24.2	22	20.2
Injection Volume (Theoretical)	cm ³	4005	4846	5767
	cu.in.	244.40	295.72	351.92
Injection Weight (PS)	g	3644	4410	5248
	oz.	128.54	155.56	185.12
Injection Pressure	MPa	218	180	151
	psi	31618	26107	21901
Holding Pressure	MPa	195	162	136
	psi	28282	23496	19725
Screw Speed	rpm	155	155	155
Plasticizing Rate (GPPS)	g/s	121	145	168
	oz./s	4.27	5.11	5.93
Nozzle Contact Force	kN	85	85	85
	US Tons	10	10	10
Injection Unit		8700		
Injection Speed	mm/s	150		
	in./s	5.91		
Injection Rate (PS)	g/s	1029	1245	1482
	oz./s	36.30	43.92	52.28

Specification



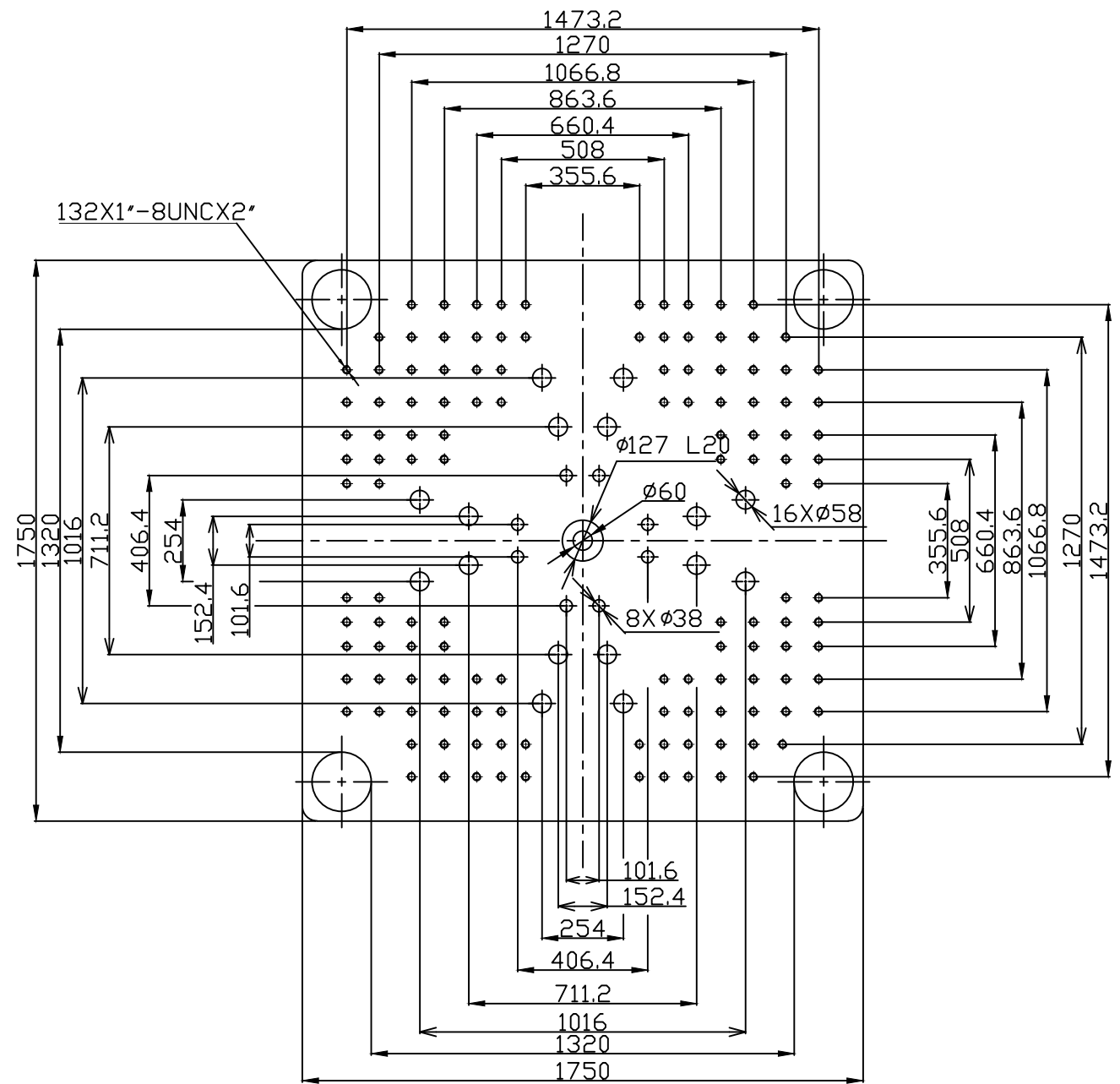
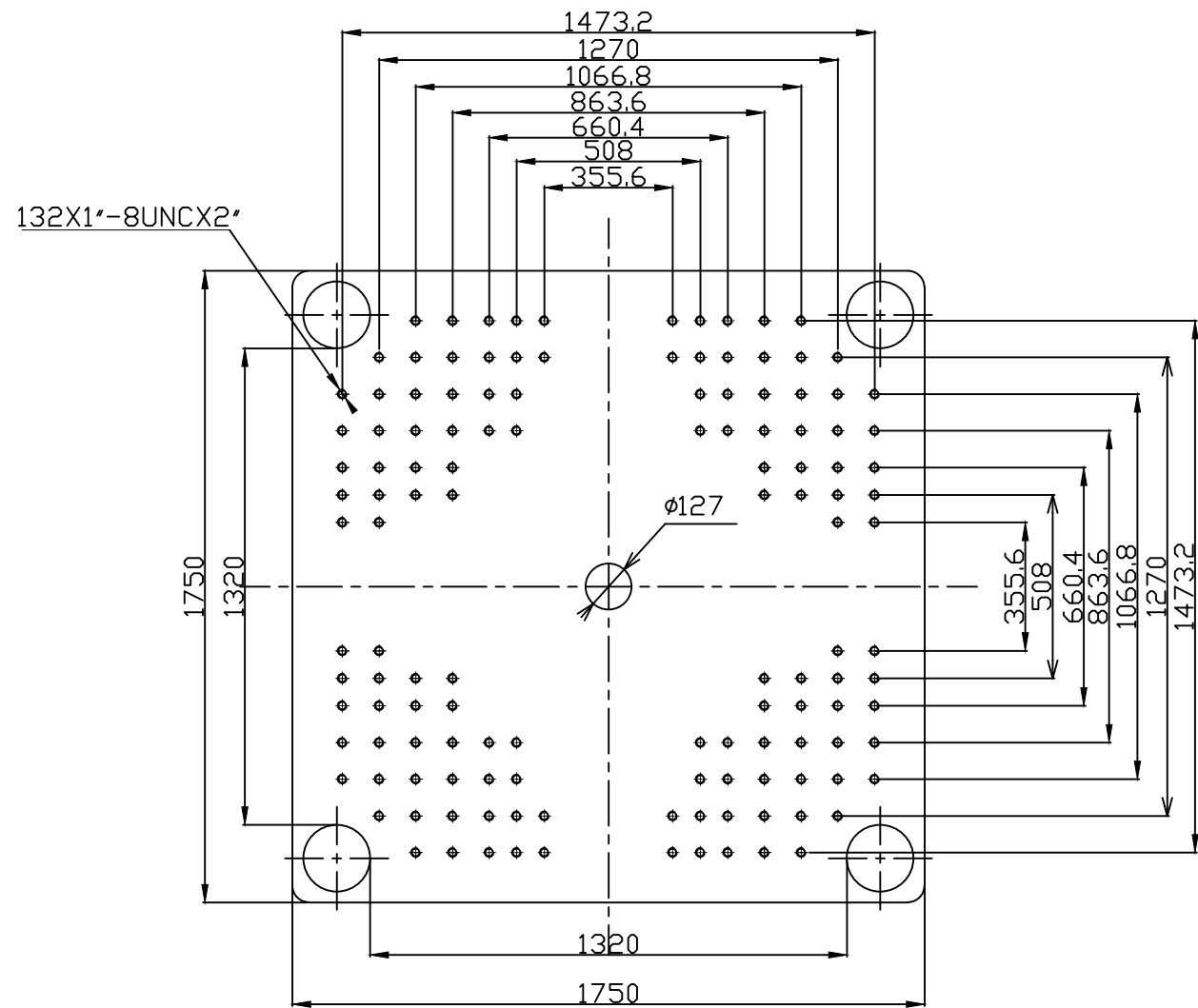
ZE11000V-8700

ZERES 5 Series: Electric with Integrated Hydraulics

Other		
Connection Power	kW/A	151/254
Heating Power	kW	82.8
Machine Dimension	m	12.27x2.82x2.76
	in.	483x111x109
Machine Weight	t	60.9
	lbs.	134262
Hopper Capacity	l	200
	gal	53
Oil Pressure	MPa	21
	psi	3046
Oil Flow	l/min	248
	gal/min	66
Oil Tank	l	431
	gal	114

***NOTE:**

1. Machine dimensions and weights are based on the international standard configuration and are for reference only. Any options or country specific requirements will affect this. Contact Absolute Haitian service department for machine specific information.
2. Power requirements are based on the international standard configuration and are for reference only. Any options or country specific requirements will affect this. Contact Absolute Haitian service department for machine specific information.



Absolute Haitian Corporation
 33 Southgate St. Worcester, MA
 T:+1 508-792-4305
 www.absolutehaitian.com

Title: ZE V 11000 Fixed & Moving Platens Drawing

Machine Model: ZE V 11000
 Machine Serial Number:
 Machine Tonnage:

Sheet: 1 of 1

Drawn By: Harry Date: 5/30/2024
 Chkd By: LEON XIE Date: 5/30/2024

Revision	Date:	Drawing #:	NOT TO SCALE	Size: 11 X 17 "B"
Rev #: 1				Units: mm / [in]
Rev #: 2				Material:
Rev #: 3				Part:
Rev #: 4				Part:
Rev #: 5				Part:

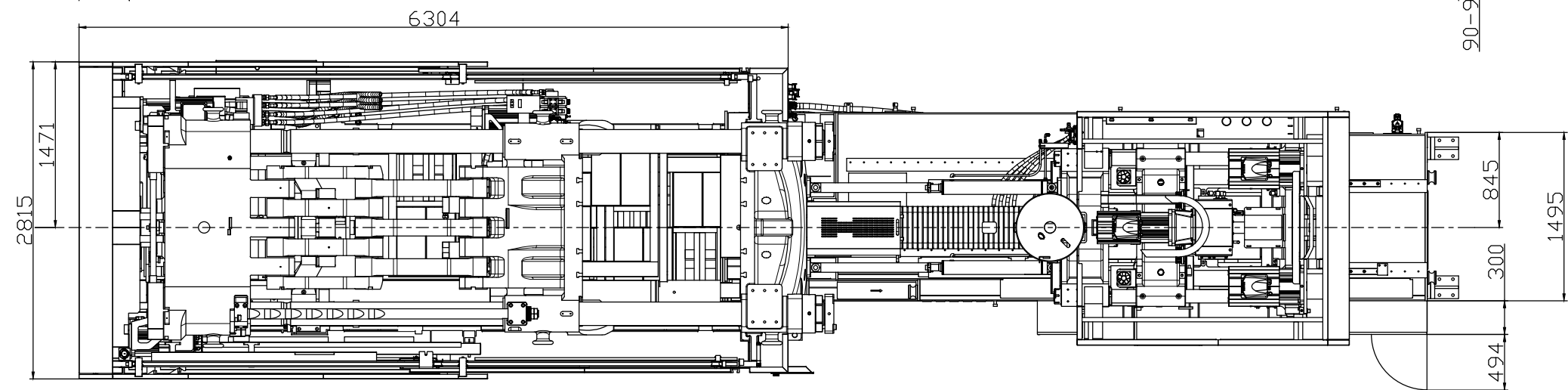
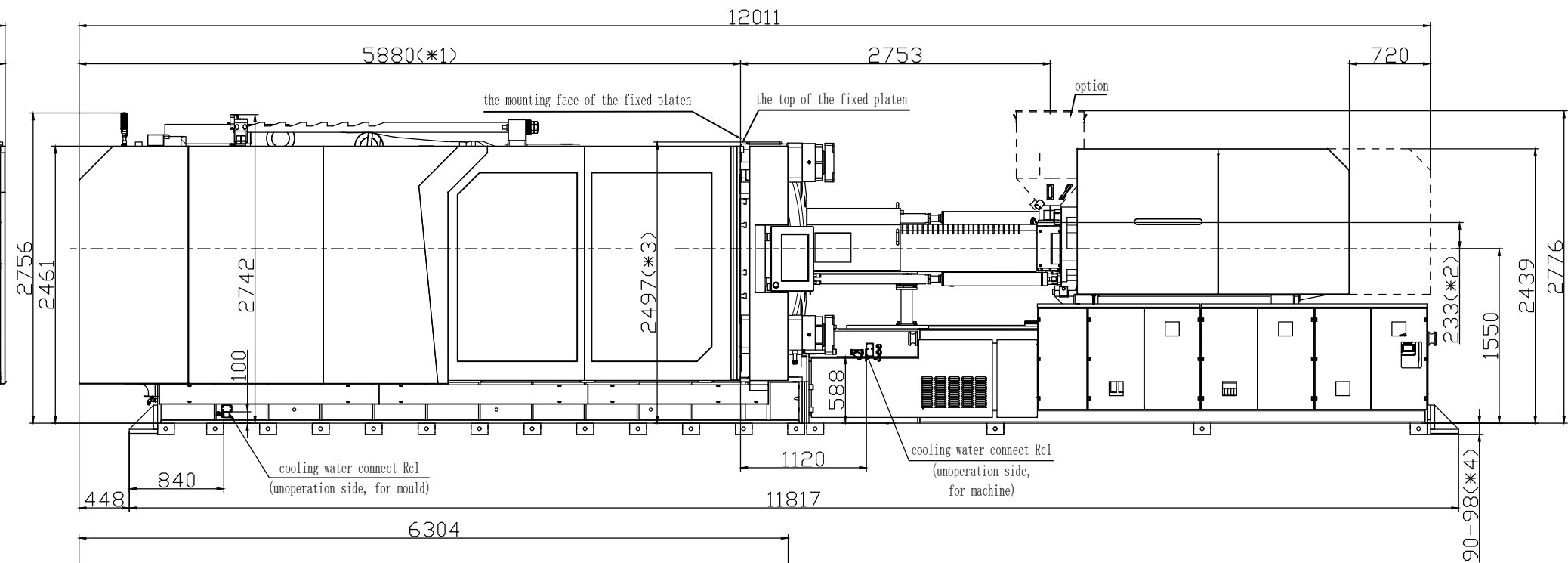
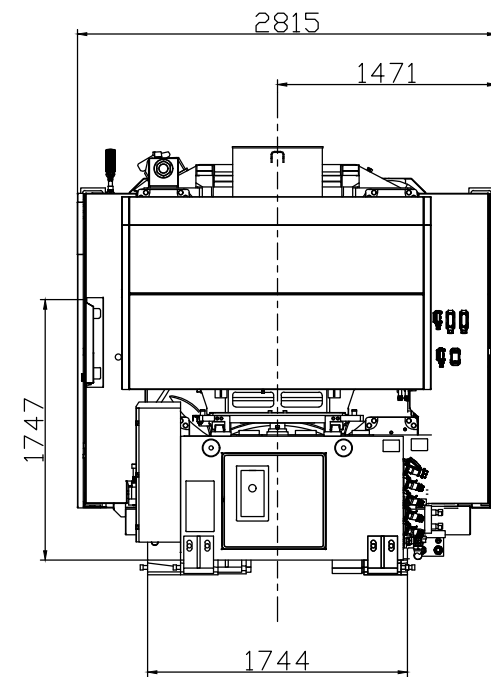
PLEASE READ:

The designs on this drawing were validated using machine manufacturer's drawings and/or information supplied by Absolute or the customer. It is the responsibility of the customer to review and confirm that all dimensions are consistent with the application intended and in accordance with the facility requirements for space, part clearance, overhead clearance, or any other interference. By signing this document, the customer accepts full responsibility for this design and application.

Customer:

Customer Approval:
 Authorized Signature

Notes:



- *1 To the mounting face of the fixed platen
- *2 To the face of Hopper fixing platform
- *3 To the top of the fixed platen
- *4 Vibration dumping support



Absolute Haitian Corporation
33 Southgate St. Worcester, MA
T: +1 508-792-4305
www.absolutehaitian.com

Title: ZE V 11000-8700 Layout Drawing

Machine Model: ZE V 11000-8700

Machine Serial Number:

Machine Tonnage:

Sheet: 1 of 1

Drawn By: Harry Date: 3/22/2024

Chkd By: LEON XIE Date: 3/22/2024

NOT TO SCALE Size: 11 X 17 "B"

Units: mm / [in]

Material:

Part:

Part:

Part:

Part:

PLEASE READ:

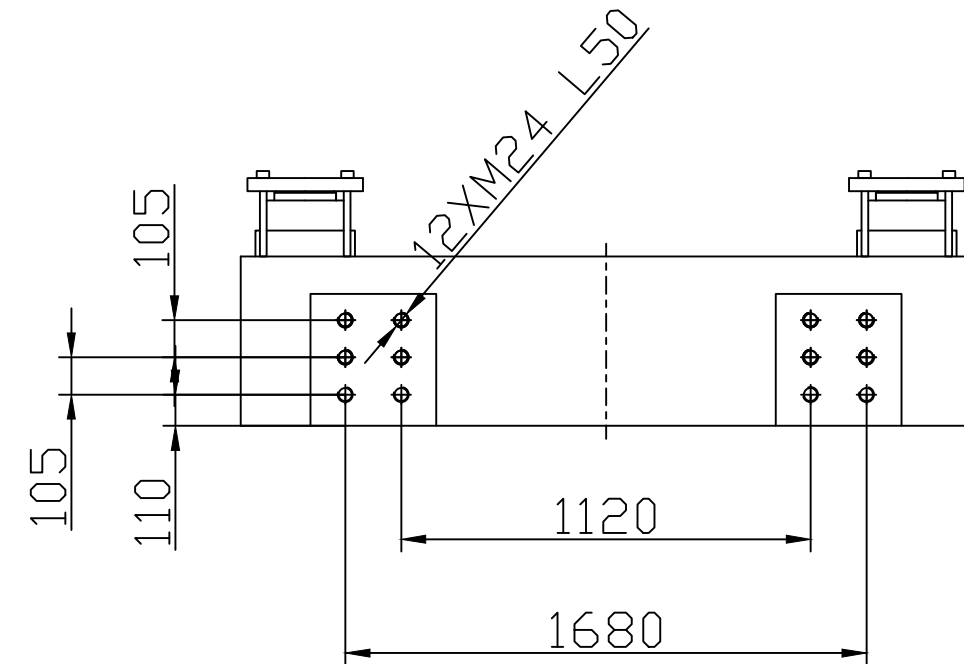
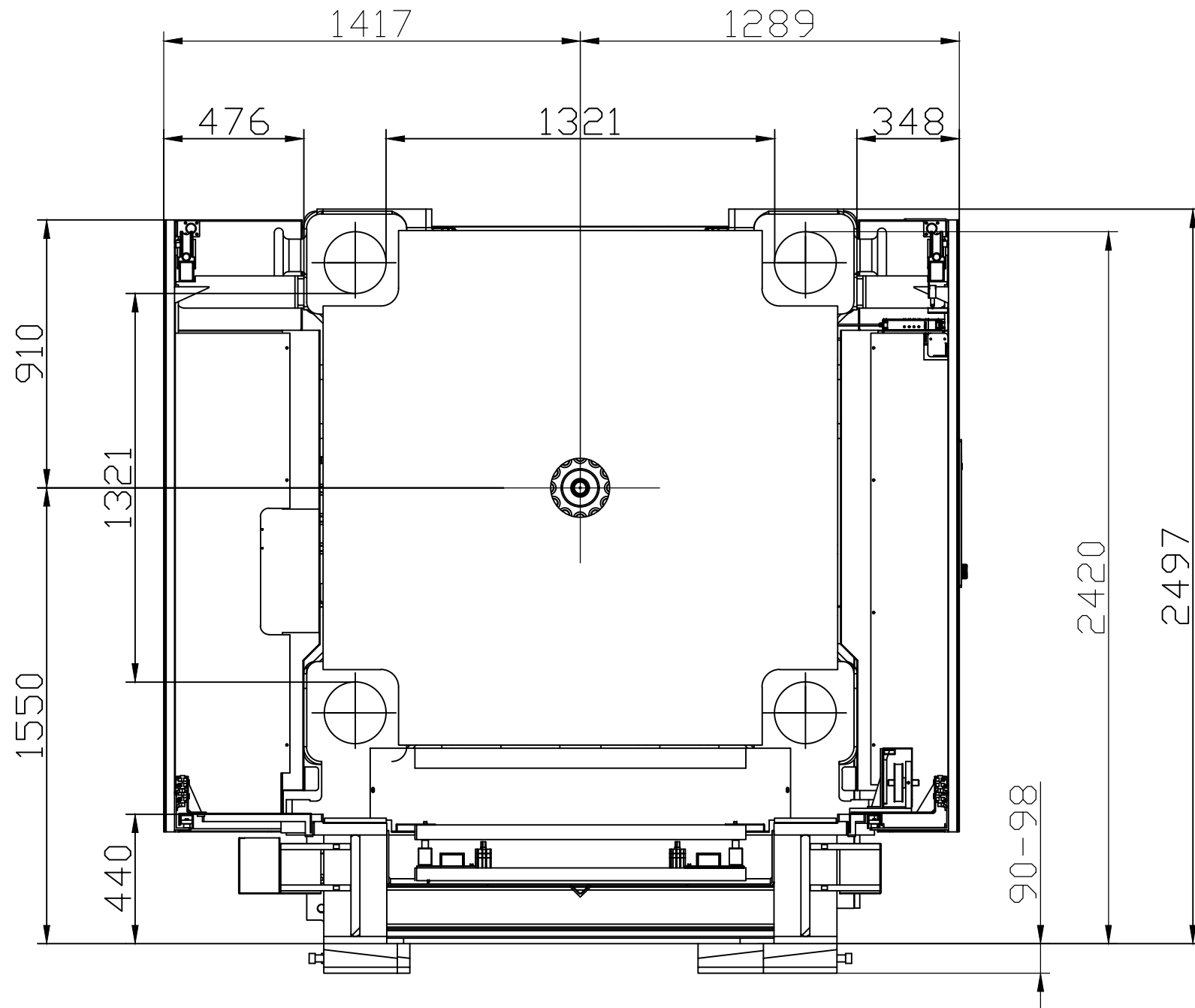
The designs on this drawing were validated using machine manufacturer's drawings and/or information supplied by Absolute or the customer. It is the responsibility of the customer to review and confirm that all dimensions are consistent with the application intended and in accordance with the facility requirements for space, part clearance, overhead clearance, or any other interference. By signing this document, the customer accepts full responsibility for this design and application.

Customer:

Customer Approval:

Authorized Signature

Notes:



Absolute Haitian Corporation
33 Southgate St. Worcester, MA
T:+1 508-792-4305
www.absolutehaitian.com

Title: ZE V 11000 Robot Mounting Drawing

Machine Model: ZE V 11000
Machine Serial Number:
Machine Tonnage:

Sheet: 1 of 1

Drawn By: Harry Date: 4/9/2024
Chkd By: LEON XIE Date: 4/9/2024

Revision	Date:	Drawing #: Robot Mounting
Rev #: 1		
Rev #: 2		
Rev #: 3		
Rev #: 4		
Rev #: 5		

NOT TO SCALE Size: 11 X 17 "B"
Units: mm / [in]
Material:
Part:
Part:
Part:
Part:

PLEASE READ:

The designs on this drawing were validated using machine manufacturer's drawings and/or information supplied by Absolute or the customer. It is the responsibility of the customer to review and confirm that all dimensions are consistent with the application intended and in accordance with the facility requirements for space, part clearance, overhead clearance, or any other interference. By signing this document, the customer accepts full responsibility for this design and application.

Customer:

Customer Approval:
Authorized Signature

Notes: